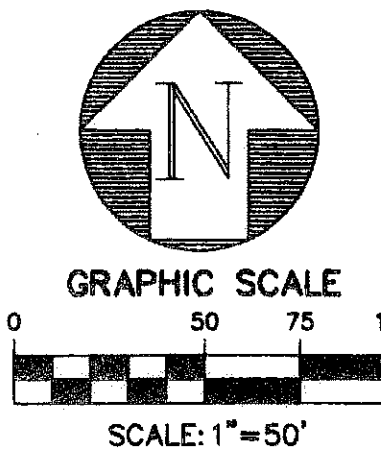


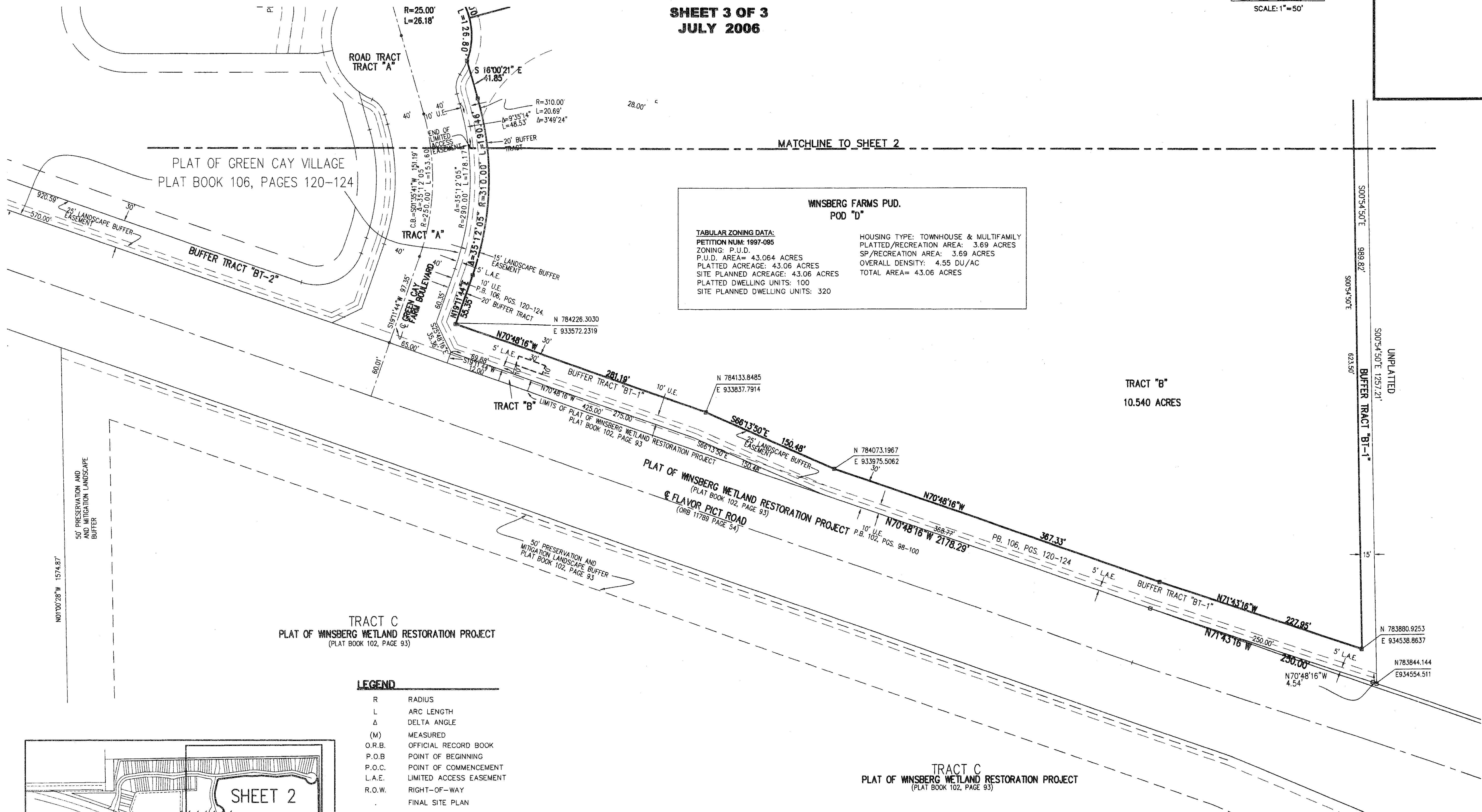
GREEN CAY II

BEING A REPLAT OF THE RESIDENTIAL TRACT OF GREEN CAY VILGE AS RECORDED IN PLAT BOOK 106, PAGES 120 THROUGH 124, OF THE PUBLIC RECORDS OF PALM BEACH COUNTY AND LYING IN SECTIONS 3 AND 4, TOWNSHIP 46 SOUTH, RANGE 42 EAST, WINSBERG FARMS P.U.D., PALM BEACH COUNTY, FLORIDA

SHEET 3 OF 3
JULY 2006



23

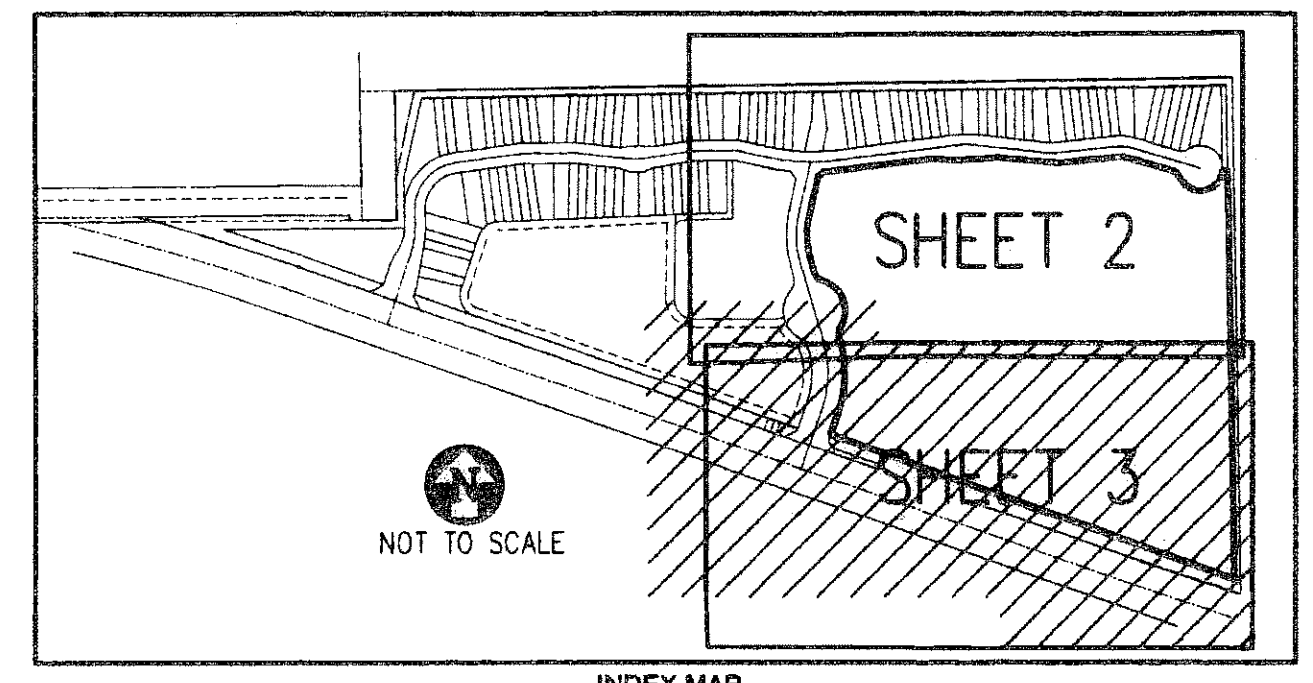


WINSBERG FARMS PUD. POD "D"

TABULAR ZONING DATA:
 PETITION NUM: 1997-095
 ZONING: P.U.D.
 P.U.D. AREA= 43.064 ACRES
 PLATTED ACREAGE: 43.06 ACRES
 SITE PLANNED ACREAGE: 43.06 ACRES
 PLATTED DWELLING UNITS: 100
 SITE PLANNED DWELLING UNITS: 320

HOUSING TYPE: TOWNHOUSE & MULTIFAMILY
 PLATTED/RECREATION AREA: 3.69 ACRES
 SP/RECREATION AREA: 3.69 ACRES
 OVERALL DENSITY: 4.55 DU/AC
 TOTAL AREA= 43.06 ACRES

- LEGEND**
- R RADIUS
 - L ARC LENGTH
 - Δ DELTA ANGLE
 - (M) MEASURED
 - O.R.B. OFFICIAL RECORD BOOK
 - P.O.B. POINT OF BEGINNING
 - P.O.C. POINT OF COMMENCEMENT
 - L.A.E. LIMITED ACCESS EASEMENT
 - R.O.W. RIGHT-OF-WAY
 - FINAL SITE PLAN
 - C.B. CHORD BEARING
 - P.R.C. POINT OF REVERSE CURVATURE
 - P.B. PLAT BOOK
 - P.G. PAGE
 - U.E. UTILITY EASEMENT
 - D.E. DRAINAGE EASEMENT
 - ⊕ CENTER LINE
 - SET PERMANENT REFERENCE MONUMENT #2633
 - SET PERMANENT CONTROL POINT (P.K. NAIL & DISC #2633)
 - SET 5/8" IRON ROD AND CAP WITH CAP (#2633)
 - N.R. NON-RADIAL



SUBDIVISION GREEN CAY II REPLAT
 BOOK 106
 PAGE 124
 RECORDING P.D.
 ZONING P.D.
 ZAP CODE 20-45-1
 SS
 TAX 964
 FUD NAME

GREEN CAY II

SFRN
 Engineers • Surveyors • Mappers

1201 BELVEDERE ROAD, WEST PALM BEACH, FLORIDA 33405
 PH (561)655-1151 • FAX (561)832-9390 • WWW.SFRNINC.COM

DATE	02/24/2006
SCALE	1" = 50'
CAD FILE	03504CONDOPLAT.dwg
SDSK PROJECT	03504
DRAWN	SFRN STAFF
CHECKED	G. RAYMAN

SHEET **3/3**
 JOB NO. **03504.05**

C:\Lund Projects\82-03504.dwg\03504condoplat.dwg 7/26/2006 8:07:16 AM E.S.T.