

BORLAND CENTER REPLAT

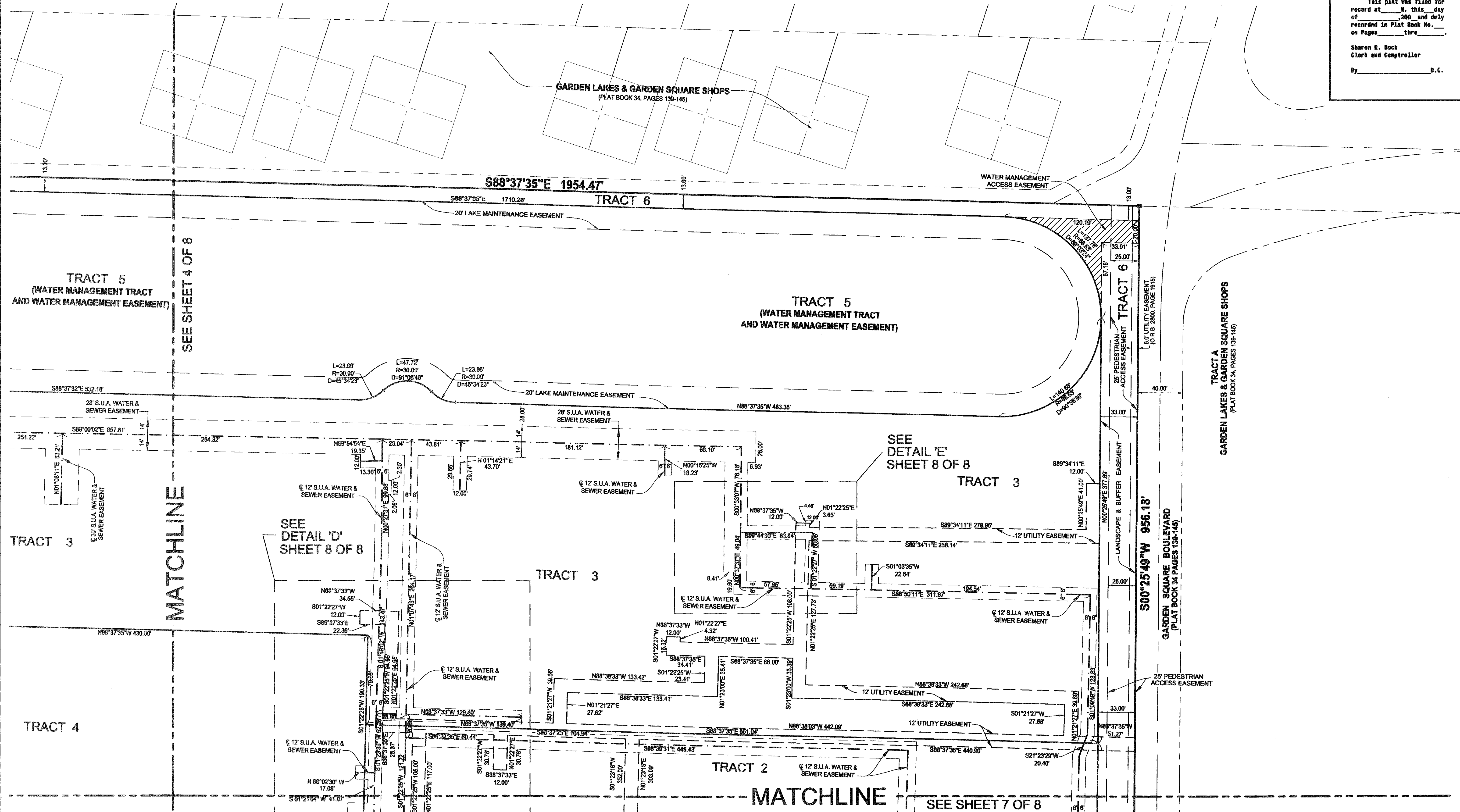
BEING A REPLAT OF TRACTS 1 THROUGH 8, INCLUSIVE, BORLAND CENTER, AS RECORDED IN PLAT BOOK 104, PAGES 110 THROUGH 117, PUBLIC RECORDS OF PALM BEACH COUNTY, FLORIDA, LYING IN SECTION 1, TOWNSHIP 42 SOUTH, RANGE 42 EAST, CITY OF PALM BEACH GARDENS, PALM BEACH COUNTY, FLORIDA
 SHEET 5 OF 8 NOVEMBER 2006

39

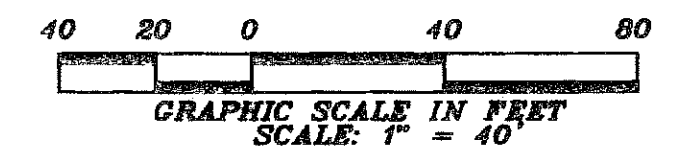
STATE OF FLORIDA
 COUNTY OF PALM BEACH
 This plat was filed for record at _____ M. this day of _____, 2006 and duly recorded in Plat Book No. _____ on Pages _____ thru _____.

Sharon R. Bock
 Clerk and Comptroller

By _____ D.C.



- ABBREVIATIONS:
- | | | | |
|-----------------------------------|---------------------------------|------------------------------------|--|
| A/C = AIR CONDITIONER | DIP = DUCTILE IRON PIPE | MON = MONUMENT | (S) = SURVEY |
| (C) = CALCULATED | PH = FIRE HYDRANT | ORB = OFFICIAL RECORD BOOK | (S/LP) = STOP LIGHT POLE |
| CBS = CONCRETE BLOCK STRUCTURE | FND = FOUND | (P) = PLAT BOOK | SMH = SANITARY MANHOLE |
| CMB = COMMISSIONERS' MINUTES BOOK | FPL = FLORIDA POWER & LIGHT | PLB = PLAT BOOK | SBTH = SOUTHERN BELL TELEPHONE MANHOLE |
| CMH = CONFLICT MANHOLE | IP = IRON PIPE | POB = POINT OF BEGINNING | STMH = STORM MANHOLE |
| CONC = CONCRETE | INV = INVERT | POC = POINT OF COMMENCEMENT | TB = TRAFFIC BOX |
| COV. = COVERED | IRC = IRON ROD WITH PLASTIC CAP | PRM = PERMANENT REFERENCE MONUMENT | TLP = TRAFFIC LIGHT POLE |
| CLF = CHAIN LINK FENCE | LB = LICENSE BUSINESS | ROW = RIGHT-OF-WAY | TV = TELEVISION |
| DE = DRAINAGE EASEMENT | LS = LICENSE SURVEY | RC = RAISED CURB | UE = UTILITY EASEMENT |
| DB = DEED BOOK | (M) = MEASURED | RCP = REINFORCED CONCRETE PIPE | WF = WOOD POLE |
| D.C.V. = DETECTOR CHECK VALVE | MHW = MEAN HIGH WATER | RFB = ROAD PLAT BOOK | |



LIDBERG LAND SURVEYING, INC.
 LB 4431 676 West Indian Town Road, Suite 200, Jupiter, Florida 33458 TEL 561-746-8454

CAD E:\AUTOCAD\014242\05-046_01\DWG\05-046-306.DWG			
REF K:\AUTOCAD\			
FLD	CREW	FB. 000	PC. 00
OFF	A.J.C.	000	00
CKD	D.C.L.	000	00
SHEET 5 OF 8		JOB 05-046 (306)	
		DATE 11/02/06	
		DWG 005-046P	