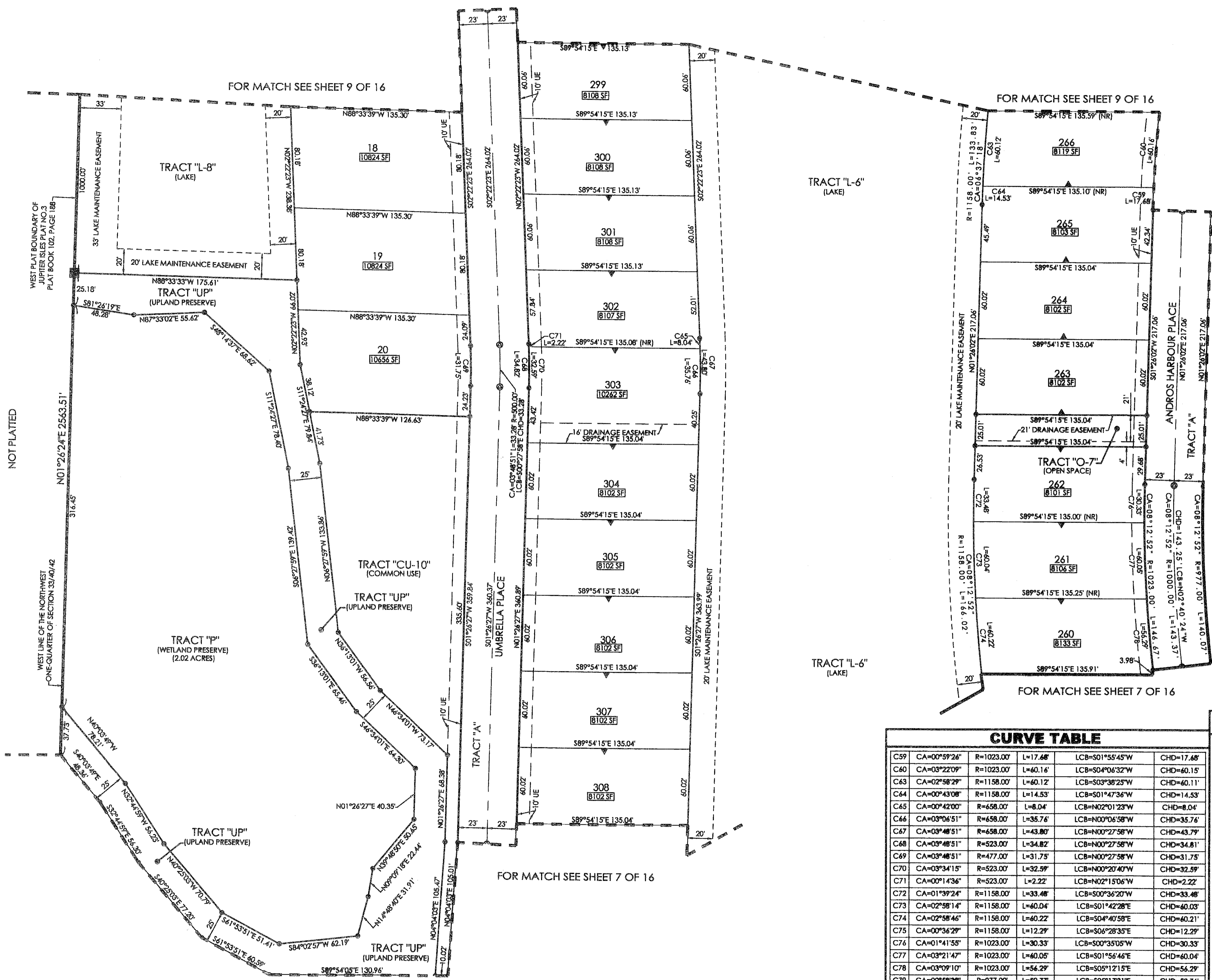
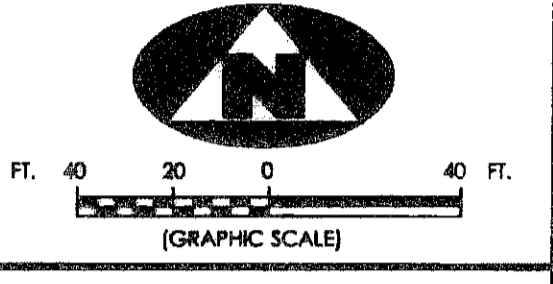
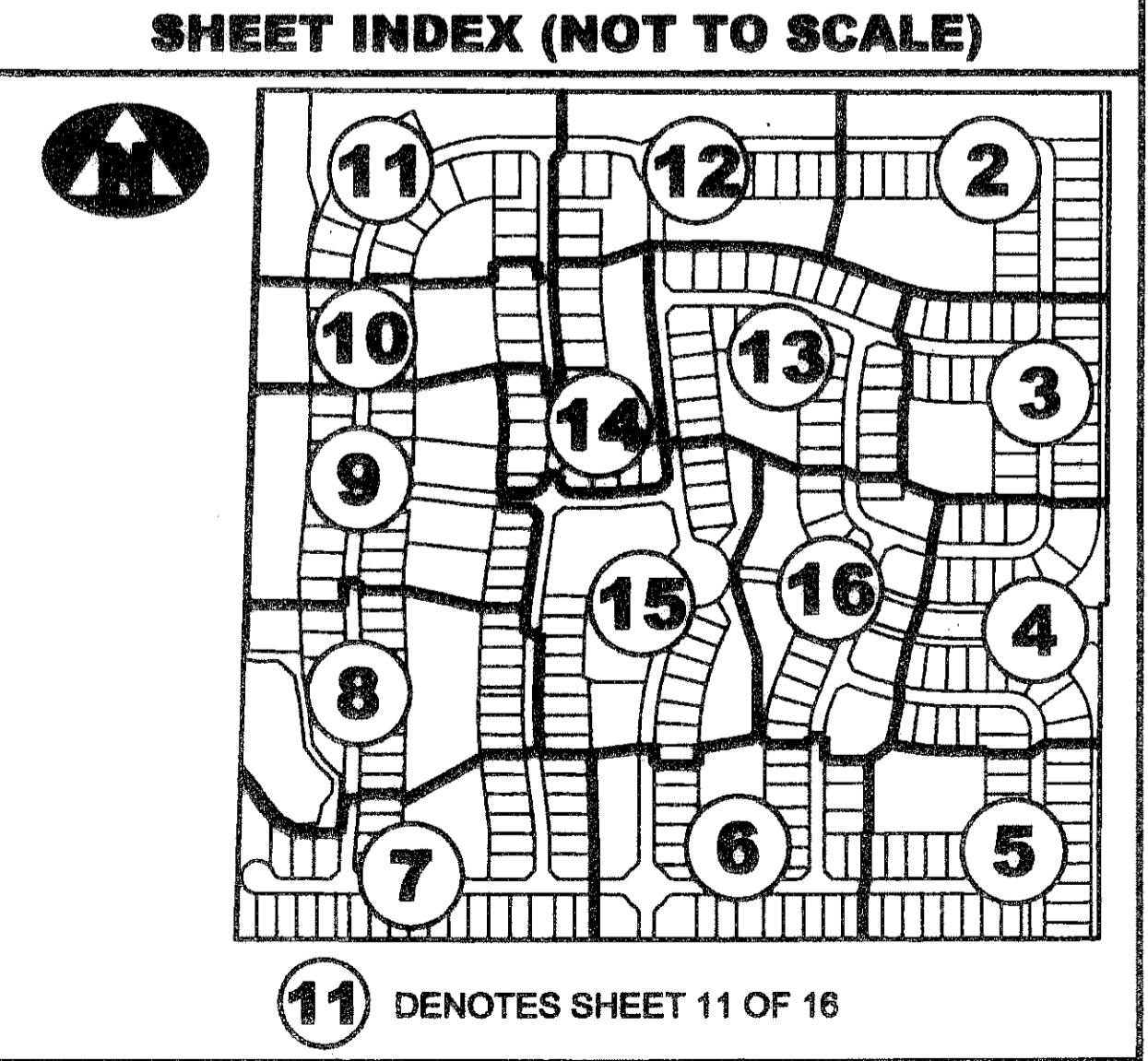


BEING A REPLAT OF JUPITER ISLES PLAT 1, JUPITER ISLES PLAT 2 AND JUPITER ISLES PLAT 3, RECORDED IN PLAT BOOK 102, PAGE 176, PLAT BOOK 102, PAGE 183 AND PLAT BOOK 102, PAGE 188, RESPECTIVELY, ALL LYING IN THE NORTHWEST ONE-QUARTER OF SECTION 33, TOWNSHIP 40 SOUTH, RANGE 42 EAST, TOWN OF JUPITER, PALM BEACH COUNTY, FLORIDA.

51



CURVE TABLE with columns for Curve ID, CA, R, L, LCB, and CHD. Lists curves C59 through C81 with their respective geometric data.



LEGEND table defining symbols for radial lines, centerlines, drainage easements, utility easements, lake maintenance access easements, Florida Department of Transportation, radius distance, arc length, central angle, long chord bearing, chord distance, official records book, Palm Beach County, and official records book.

SURVEYOR'S NOTES: 1. THE BEARING BASE FOR THIS PLAT IS S 89°58'44"E AS SHOWN ALONG THE SOUTH BOUNDARIES OF THE PLAT OF JUPITER ISLES PLAT 2, AND JUPITER ISLES PLAT 3, RECORDED IN PLAT BOOK 102, PAGE 183 AND PLAT BOOK 102, PAGE 188, RESPECTIVELY. 2. IN THOSE INSTANCES WHERE UTILITY OR DRAINAGE STRUCTURES ARE CONSTRUCTED IN CONFLICT WITH THE PLATTED PERMANENT CONTROL POINT POSITION STRADDLERS MONUMENTED AS PERMANENT CONTROL POINTS WILL BE SET TO REFERENCE THE PLATTED POSITION. 3. THIS INSTRUMENT WAS PREPARED BY WM. R. VAN CAMPEN, P.S.M. NO. 2424, IN AND FOR THE OFFICES OF ASSOCIATED LAND SURVEYORS, INC., 4182 WEST BLUE HERON BOULEVARD, SUITE 121, RIVIERA BEACH, FLORIDA, 33407.

ASSOCIATED LAND SURVEYORS, INC. 4152 W. BLUE HERON BOULEVARD-SUITE 121 RIVIERA BEACH FLORIDA 33404 PHONE: (561) 848-2102 FAX: (561) 844-9659 EMAIL: ALLSSURVEY@AOL.COM