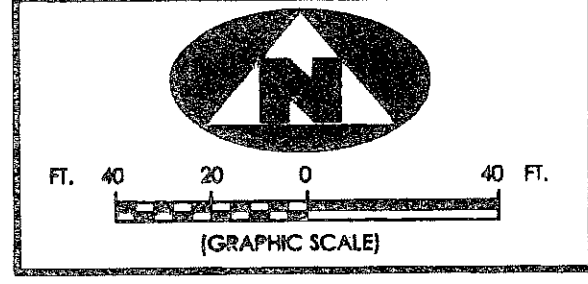
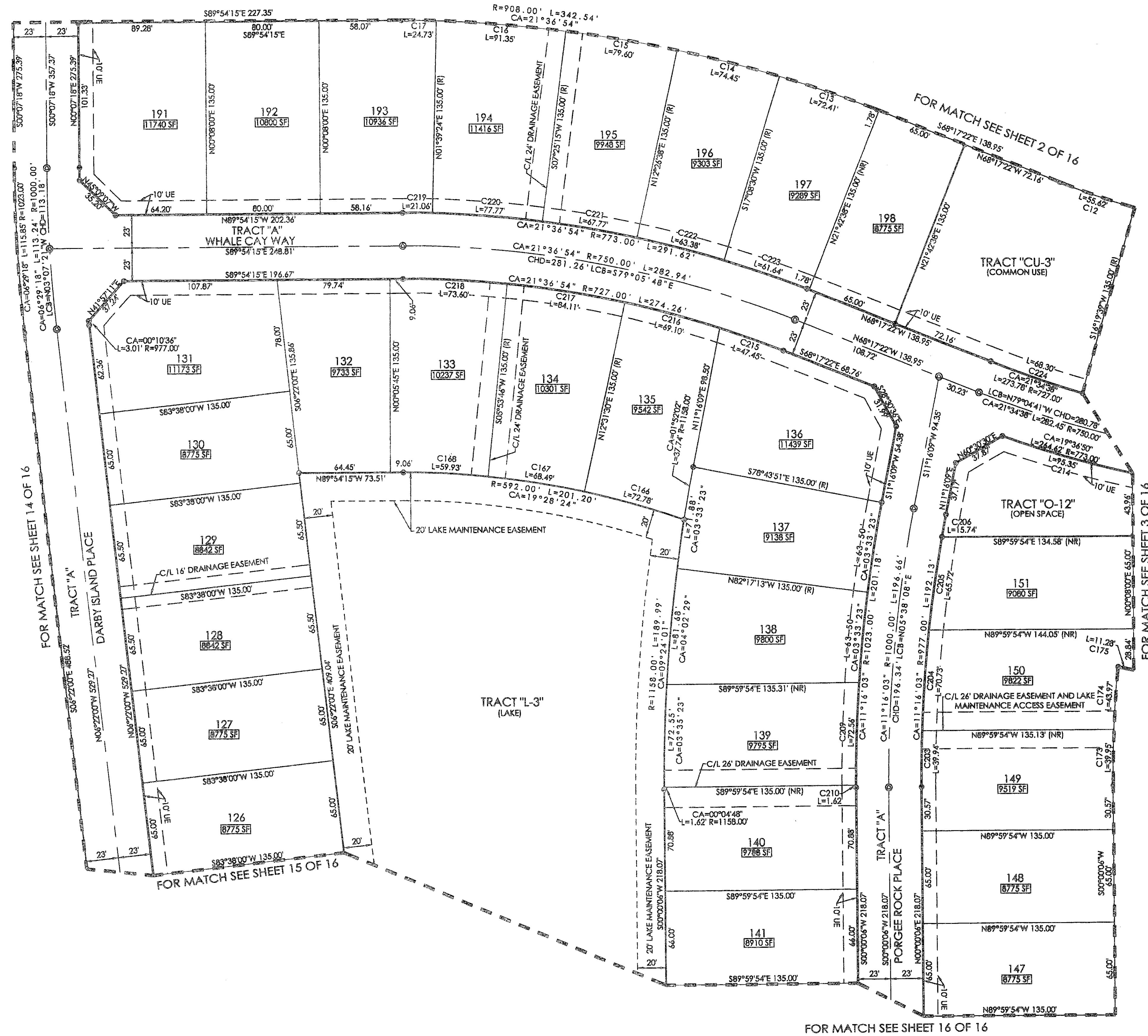


BEING A REPLAT OF JUPITER ISLES PLAT 1, JUPITER ISLES PLAT 2 AND JUPITER ISLES PLAT 3, RECORDED IN PLAT BOOK 102, PAGE 176, PLAT BOOK 102, PAGE 183 AND PLAT BOOK 102, PAGE 188, RESPECTIVELY, ALL LYING IN THE NORTHWEST ONE-QUARTER OF SECTION 33, TOWNSHIP 40 SOUTH, RANGE 42 EAST, TOWN OF JUPITER, PALM BEACH COUNTY, FLORIDA.

56

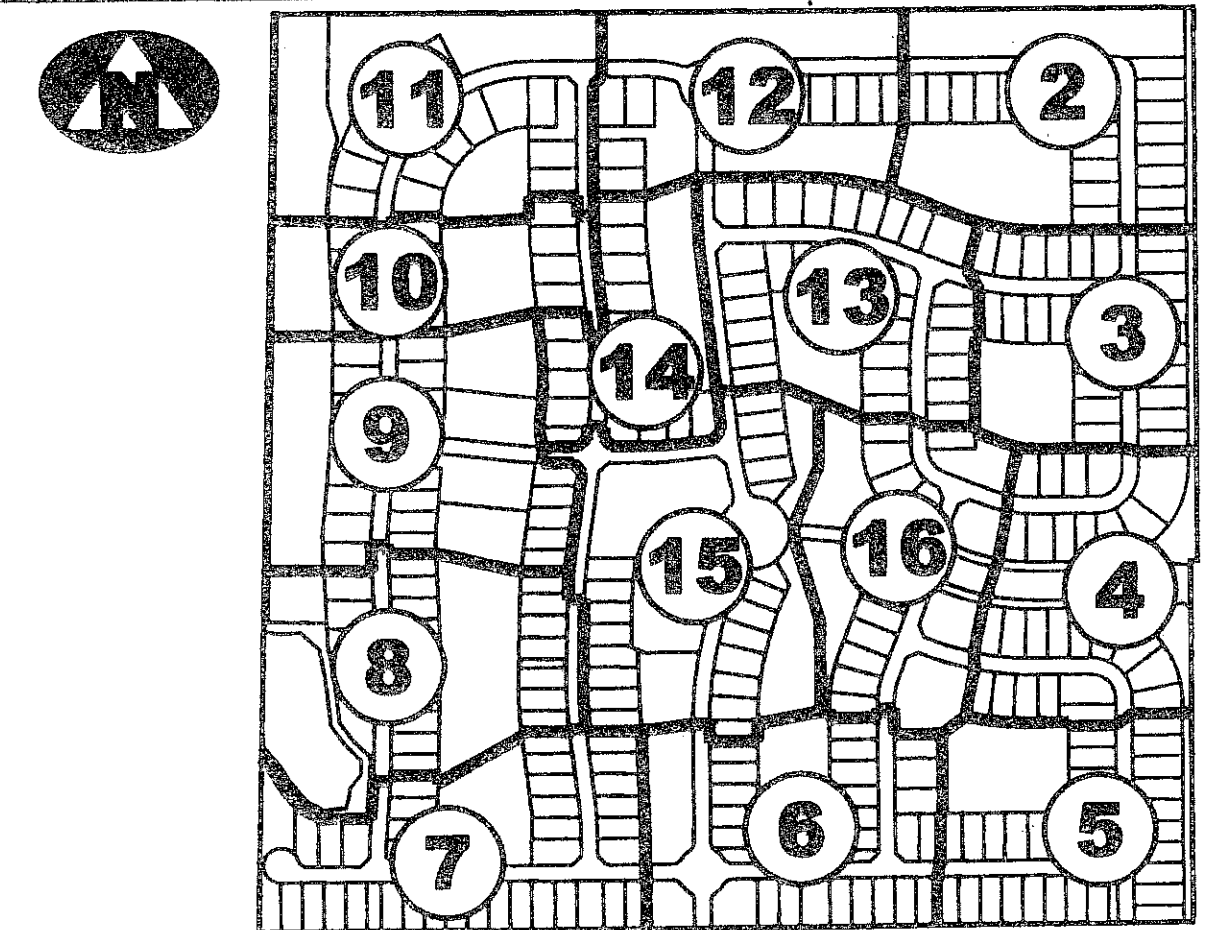
FOR MATCH SEE SHEET 12 OF 16



CURVE TABLE

Table with 5 columns: Curve ID, CA, R, L, LCB, CHD. Lists curve data for curves C12 through C224.

SHEET INDEX (NOT TO SCALE)



11 DENOTES SHEET 11 OF 16

LEGEND

Legend table defining symbols for radial lines, centerlines, easements, and other survey features.

SURVEYOR'S NOTES

1. THE BEARING BASE FOR THIS PLAT IS S 89°59'44"E AS SHOWN ALONG THE SOUTH BOUNDARIES OF THE PLAT OF JUPITER ISLES PLAT 2, AND JUPITER ISLES PLAT 3, RECORDED IN PLAT BOOK 102, PAGE 183 AND PLAT BOOK 102, PAGE 188, RESPECTIVELY. 2. IN THOSE INSTANCES WHERE UTILITY OR DRAINAGE STRUCTURES ARE CONSTRUCTED IN CONFLICT WITH THE PLATTED PERMANENT CONTROL POINT POSITION STRADDLERS MONUMENTED AS PERMANENT CONTROL POINTS WILL BE SET TO REFERENCE THE PLATTED POSITION. 3. THIS INSTRUMENT WAS PREPARED BY WM. R. VAN CAMPEN, P.S.M. NO. 2424, IN AND FOR THE OFFICES OF ASSOCIATED LAND SURVEYORS, INC., 4152 WEST BLUE HERON BOULEVARD, SUITE 121, RIVIERA BEACH, FLORIDA, 33407

FILE: P258LOXNORTHPLAT
FB: WO.NO.: P258
SCALE: 1"=40' DATE: 10-18-2006
DWN: KVC SHEET 13 OF 16

ASSOCIATED LAND SURVEYORS, INC. 4152 W. BLUE HERON BOULEVARD-SUITE 121 RIVIERA BEACH FLORIDA 33404 PHONE: (561) 848-2102 FAX: (561) 844-9659 EMAIL: ALSSURVEY@AOL.COM