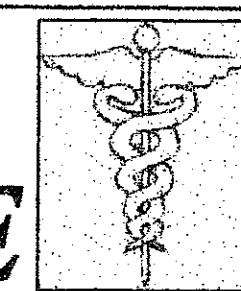


HAGEN RANCH MEDICAL OFFICE



A PARCEL OF LAND LYING IN SECTION 28, TOWNSHIP 45 SOUTH, RANGE 42 EAST,
 BEING A PORTION OF TRACT 25, BLOCK 55,
 PALM BEACH FARMS COMPANY PLAT NO.3
 PLAT BOOK 2, PAGE 50
 PALM BEACH COUNTY, FLORIDA
 SHEET 2 OF 2
 AUGUST 2006

72

Legend:

- CL = CENTER LINE
- D = DEED BOOK
- DE = DRAINAGE EASEMENT
- EL = ELEVATION
- F = FOUND
- ORB = OFFICIAL RECORD BOOK
- PB = PLAT BOOK
- PCP = PERMANENT CONTROL POINT
- PG = PAGE
- POC = POINT OF COMMENCEMENT
- PRM = PERMANENT REFERENCE MONUMENT
- PSM = PROFESSIONAL SURVEYOR & MAPPER
- UE = UTILITY EASEMENT
- Δ = CENTRAL ANGLE

SURVEYOR'S NOTES:

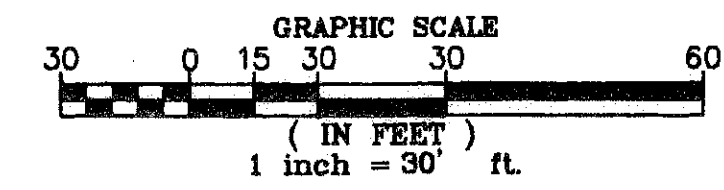
1. PRMS DENOTED THIS = \square ; ARE 4"X4" CONCRETE MONUMENTS WITH DISK STAMPS FROM L.M. 7463
2. ALL DIMENSIONS REFER TO THE HORIZONTAL PLANE AND ARE IN ACCORDANCE WITH THE DEFINITION OF THE UNITED STATES SURVEY FOOT ADOPTED BY THE NATIONAL INSTITUTE OF STANDARDS AND TECHNOLOGY.
3. NO BUILDINGS OR ANY KIND OF CONSTRUCTION OR TREES OR SHRUBS SHALL BE PLACED ON ANY EASEMENT WITHOUT PRIOR WRITTEN APPROVAL OF ALL EASEMENT BENEFICIARIES AND ALL APPLICABLE COUNTY APPROVALS OR PERMITS AS REQUIRED FOR SUCH ENCROACHMENTS.

NOTICE:

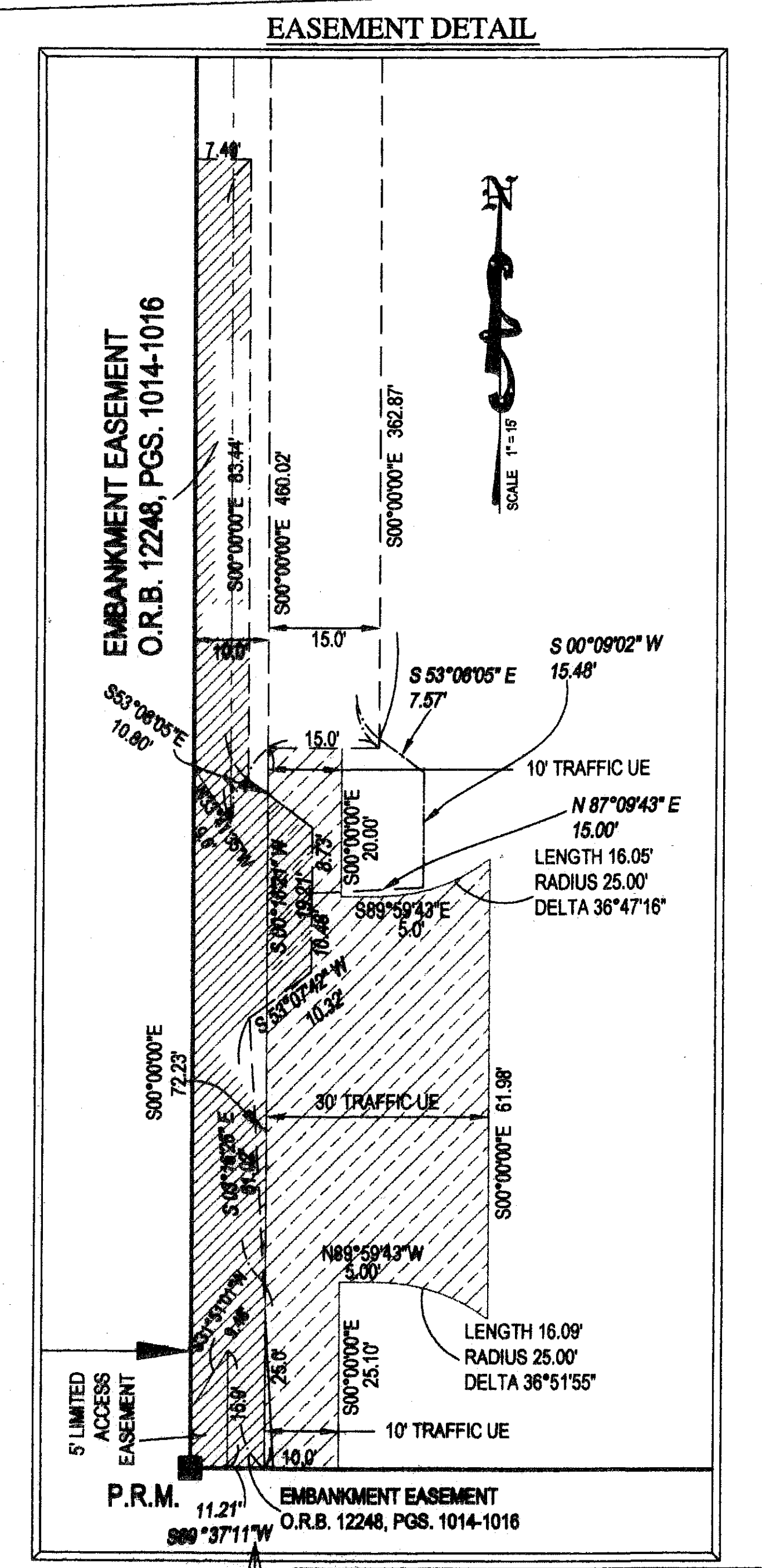
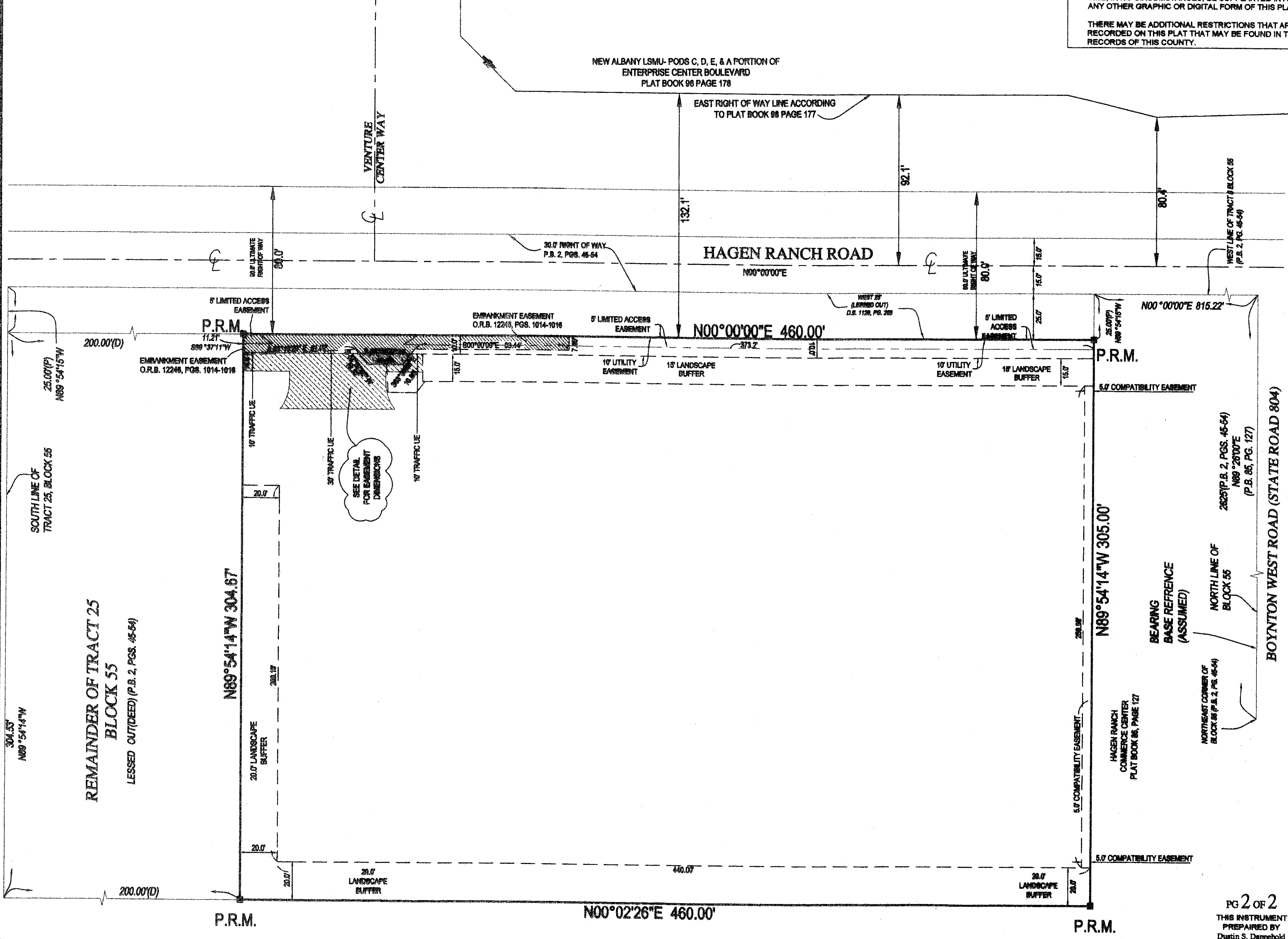
THIS PLAT, AS RECORDED IN ITS GRAPHIC FORM, IS THE OFFICIAL DEPICTION OF THE SUBDIVIDED LANDS DESCRIBED HEREIN AND WILL, IN NO CIRCUMSTANCES, BE SUPPLANTED IN AUTHORITY BY ANY OTHER GRAPHIC OR DIGITAL FORM OF THIS PLAT.

THERE MAY BE ADDITIONAL RESTRICTIONS THAT ARE NOT RECORDED ON THIS PLAT THAT MAY BE FOUND IN THE PUBLIC RECORDS OF THIS COUNTY.

COUNTY OF PALM BEACH
 STATE OF FLORIDA
 THIS PLAT WAS FILED FOR RECORD AT _____ M.
 THIS _____ DAY OF _____
 A.D. 2006 AND DULY RECORDED IN PLAT BOOK _____
 ON PAGES _____ THRU _____
 SHARON R. BOCK
 CLERK AND COMPTROLLER
 BY: _____ D.C.



SCALE 1" = 30'



STATIONERS Hagen Ranch Medical Office
 PLAT NO. 3
 BLOCK 55
 TRACT 25
 PALM BEACH FARMS COMPANY
 PLAT BOOK 2, PAGE 50
 AUGUST 2006

PG 2 OF 2
 THIS INSTRUMENT
 PREPARED BY
 Dustin S. Dammehol

COMPASS SURVEYING
 3096 EL CAMINO REAL
 WEST PALM BEACH, FL 33409
 PHONE: 561.640.4277
 FAX: 561.640.4261
 LB #7463