

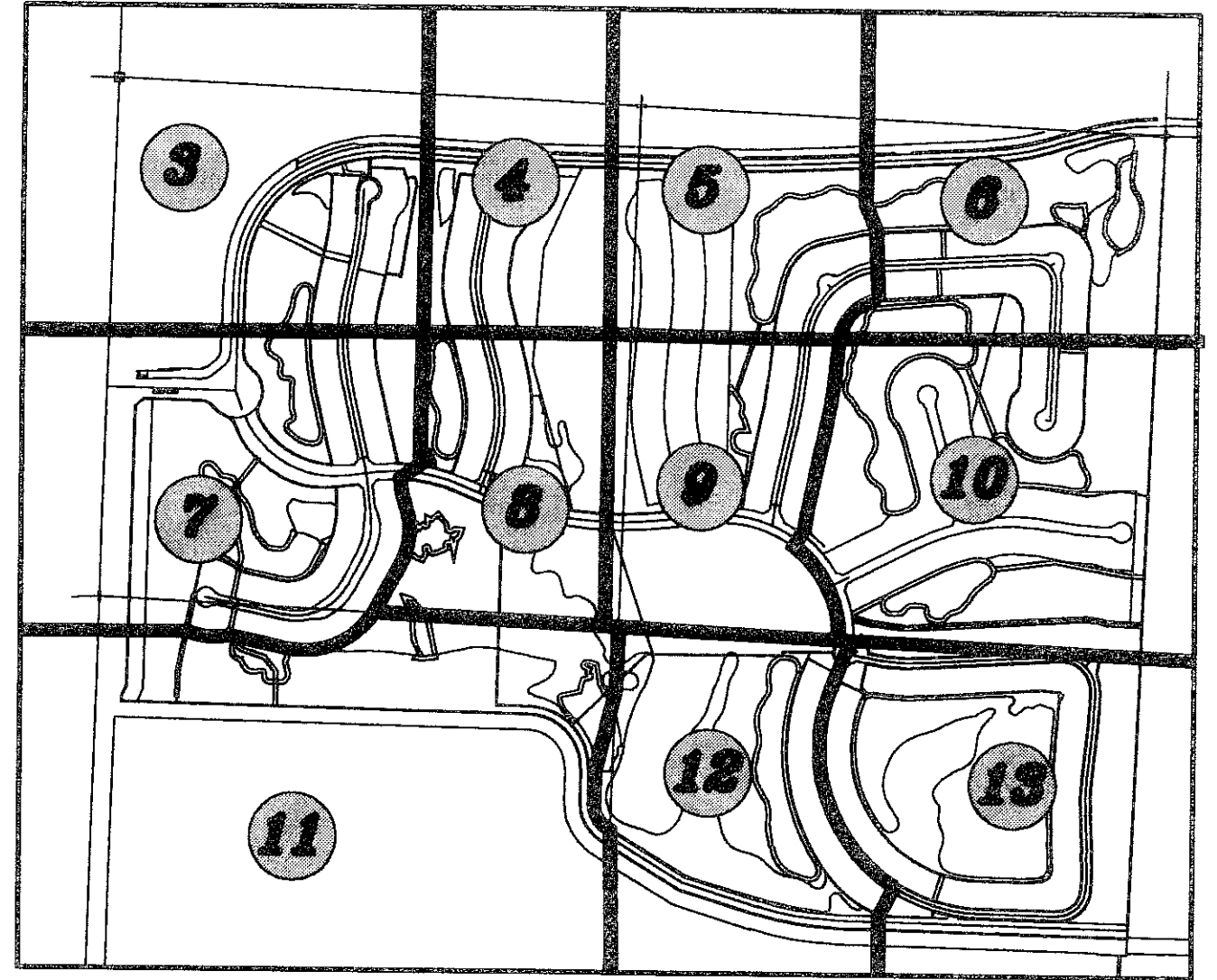
76

FRENCHMAN'S RESERVE PCD - GOLF COURSE

BEING A REPLAT OF TRACT G AND A PORTION OF TRACT C, FRENCHMAN'S RESERVE PCD - PLAT ONE, AS RECORDED IN PLAT BOOK 92, AT PAGE 11, TRACT OS1, FRENCHMAN'S RESERVE PCD - PLAT "A", AS RECORDED IN PLAT BOOK 92, AT PAGE 194, TRACTS OS1 AND OS4, FRENCHMAN'S RESERVE PCD - PLAT "B", AS RECORDED IN PLAT BOOK 96, AT PAGE 102, A PORTION OF TRACT OS2, FRENCHMAN'S RESERVE PCD - PLAT "D", AS RECORDED IN PLAT BOOK 93, AT PAGE 123, TRACTS "G1" AND "G2", FRENCHMAN'S RESERVE PCD - PLAT E, AS RECORDED IN PLAT BOOK 101, AT PAGE 1, TRACTS A, B, C, D, E, H, OS1 AND OS2, FRENCHMAN'S RESERVE PCD - PLAT F, AS RECORDED IN PLAT BOOK 93, AT PAGE 82, TRACTS C AND D, FRENCHMAN'S RESERVE PCD - CLUBHOUSE, AS RECORDED IN PLAT BOOK 94, AT PAGE 138, PUBLIC RECORDS, PALM BEACH COUNTY, FLORIDA.

LYING IN SECTION 31, TOWNSHIP 41 SOUTH, RANGE 43 EAST, CITY OF PALM BEACH GARDENS, PALM BEACH COUNTY, FLORIDA.

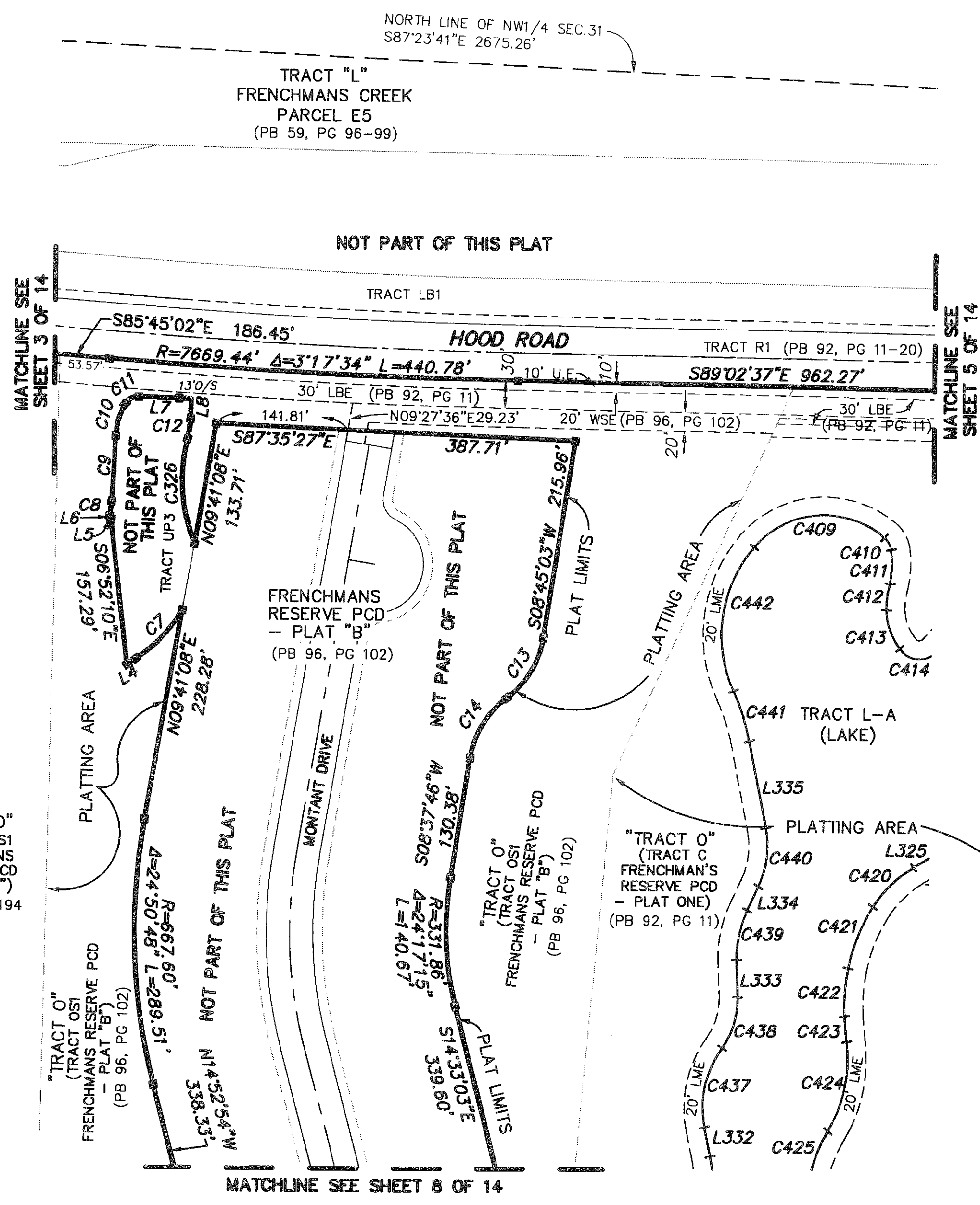
OCTOBER, 2006 SHEET 4 OF 15



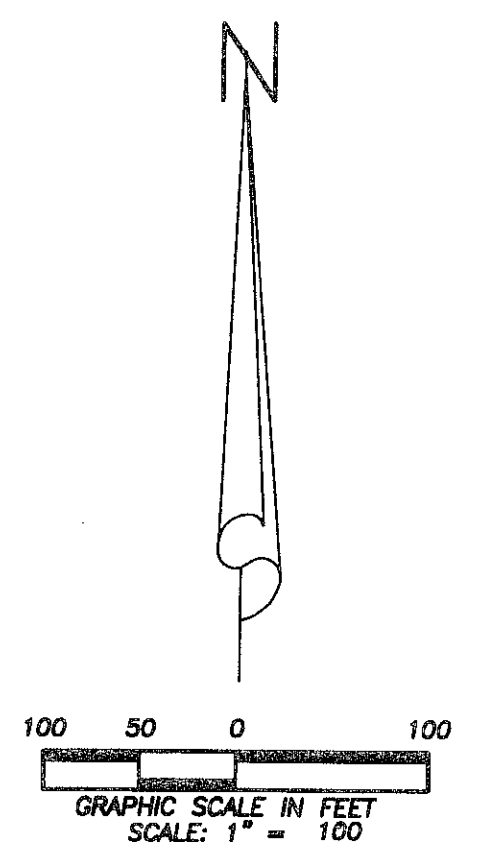
KEY MAP NOT TO SCALE

LINE	BEARING	DISTANCE
L4	N57°00'49"E	11.31'
L5	S78°45'01"E	1.88'
L6	S03°26'38"E	2.96'
L7	N88°17'13"W	56.69'
L8	S01°42'52"W	20.99'
L325	N58°47'53"E	27.32'
L332	S11°53'07"E	32.15'
L333	S02°22'34"E	40.65'
L334	S24°54'42"W	28.24'
L335	S11°25'38"E	94.93'

CURVE	RADIUS	CENTRAL ANGLE	LENGTH	CHORD BEARING	CHORD DISTANCE
C7	159.58'	26°11'33"	72.95'	N43°11'42"E	72.32'
C8	112.90'	8°06'29"	15.98'	N08°34'46"E	15.96'
C9	1491.86'	2°45'15"	71.71'	N03°08'58"E	71.71'
C10	73.20'	28°05'03"	35.88'	S15°48'52"W	35.52'
C11	16.50'	61°51'27"	17.81'	S60°47'04"W	16.96'
C12	100.00'	12°36'29"	22.01'	N08°01'07"E	21.96'
C13	100.00'	44°23'02"	77.46'	N30°56'34"E	75.54'
C14	100.00'	44°30'19"	77.68'	S30°52'55"W	75.74'
C326	182.11'	36°49'51"	117.06'	S04°05'35"E	115.06'
C409	100.00'	89°45'53"	156.67'	S85°19'33"W	141.13'
C410	22.37'	39°08'17"	15.28'	N30°13'22"W	14.99'
C411	110.46'	19°09'36"	36.94'	N01°40'54"E	36.77'
C412	95.41'	17°34'54"	29.28'	S07°13'48"W	29.16'
C413	69.14'	36°47'13"	44.39'	S20°17'11"E	43.64'
C414	25.00'	99°33'02"	43.44'	S82°18'44"E	38.18'
C420	134.47'	26°24'51"	61.99'	S45°26'28"W	61.45'
C421	187.68'	21°59'58"	72.06'	S21°14'01"W	71.62'
C422	227.80'	13°18'22"	52.90'	S03°34'51"W	52.78'
C423	319.52'	4°57'17"	27.63'	S05°31'49"E	27.62'
C424	150.48'	38°01'50"	99.88'	N11°24'51"E	98.08'
C425	158.71'	22°08'14"	61.32'	S19°35'20"W	60.94'
C437	107.36'	47°58'21"	89.89'	S12°06'00"W	87.29'
C438	91.05'	36°45'14"	58.41'	N16°29'33"E	57.41'
C439	115.97'	27°17'19"	55.23'	S11°16'02"W	54.71'
C440	102.79'	36°17'06"	65.10'	N06°46'09"E	64.01'
C441	240.00'	13°40'25"	57.28'	N18°15'50"W	57.14'
C442	144.00'	65°32'39"	164.73'	S07°40'17"W	155.89'



- LEGEND:
- CL = CENTERLINE
 - DE = DRAINAGE EASEMENT
 - DB = DEED BOOK
 - Δ = DELTA
 - FND = FOUND
 - FPL = FLORIDA POWER & LIGHT
 - IP = IRON PIPE
 - IRC = IRON ROD WITH PLASTIC CAP
 - L = LENGTH
 - LAE = LIMITED ACCESS EASEMENT
 - LBE = LANDSCAPE BUFFER EASEMENT
 - LSE = LIFT STATION EASEMENT
 - LME = LAKE MAINTENANCE EASEMENT
 - LB = LICENSE BUSINESS
 - ORB = OFFICIAL RECORD BOOK
 - O/S = OFF SET
 - PBCO = PALM BEACH COUNTY
 - (P) = PLAT
 - PB = PLAT BOOK
 - PK = PARKER KAYLON NAIL
 - PRM = PERMANENT REFERENCE MONUMENT
 - PSUE = PRIVATE SPECIFIC USE EASEMENT
 - R = RADIUS
 - R/W = RIGHT-OF-WAY
 - SUE = SEAGRASS UTILITY EASEMENT
 - UE = UTILITY EASEMENT
 - WBE = WETLAND BUFFER EASEMENT
 - WSE = WATER AND SEWER EASEMENT
 - ⊠ = SET PERMANENT REFERENCE MONUMENT (PRM) "LB 7055" UNLESS OTHERWISE NOTED
 - ⊙ = SET PK NAIL AND DISC "LB 7055" UNLESS OTHERWISE NOTED



Wantman Group, Inc.
 Engineering ♦ Surveying ♦ Mapping
 2035 VISTA PARKWAY, SUITE 100
 WEST PALM BEACH, FL 33411
 (561) 687-2220 phone (561) 687-1110 fax
 CERT No. 6091 - LB No. 7055
 THIS INSTRUMENT WAS PREPARED BY DEREK G. ZEMAN, P.S.M.
 PROFESSIONAL SURVEYOR AND MAPPER, LICENSE NO. 5655
 FOR THE FIRM: WANTMAN GROUP, INC.