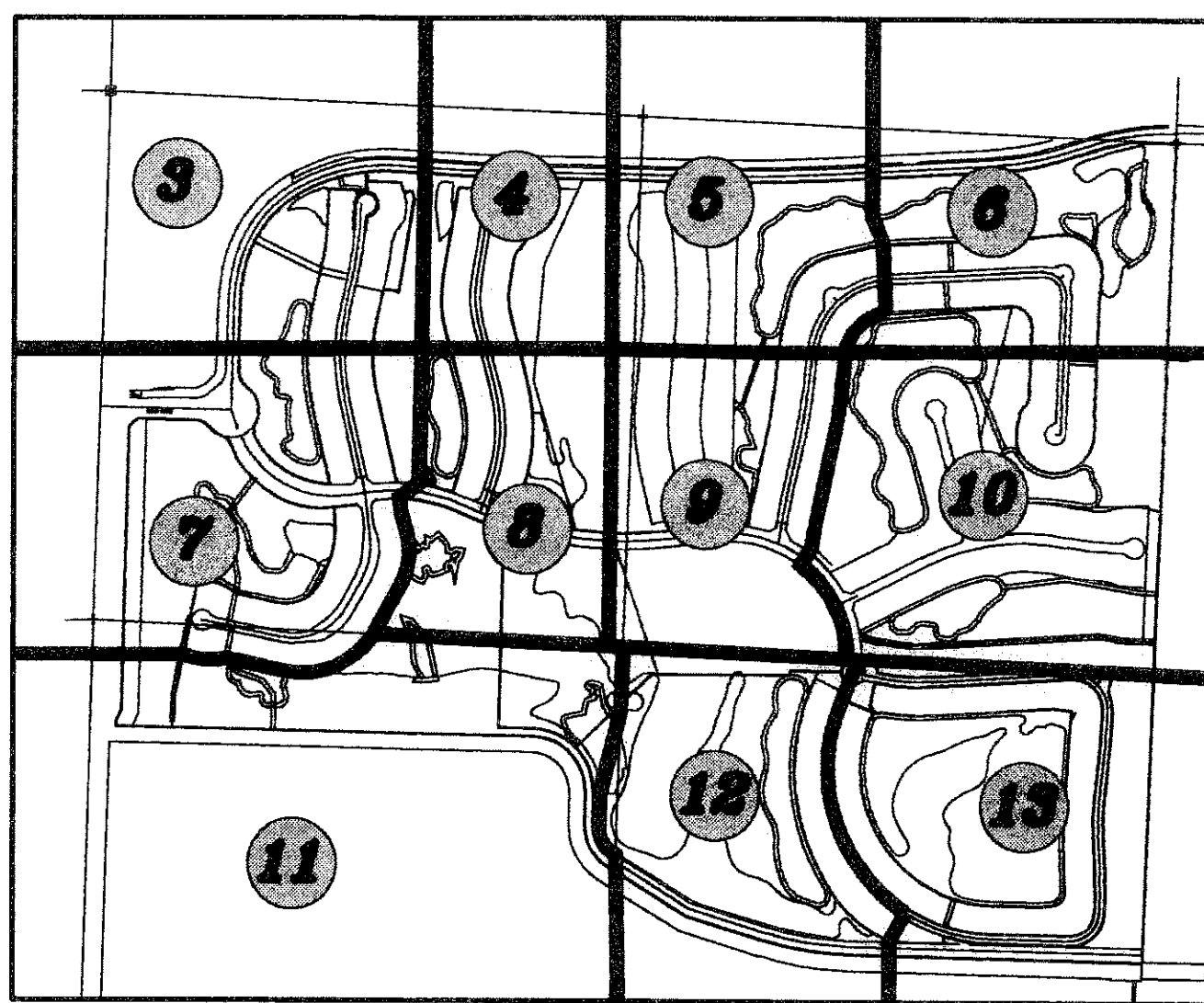


FRENCHMAN'S RESERVE PCD - GOLF COURSE

BEING A REPLAT OF TRACT G AND A PORTION OF TRACT C, FRENCHMAN'S RESERVE PCD - PLAT ONE, AS RECORDED IN PLAT BOOK 92, AT PAGE 11, TRACT OS1, FRENCHMAN'S RESERVE PCD - PLAT "A", AS RECORDED IN PLAT BOOK 92, AT PAGE 194, TRACTS OS1 AND OS4, FRENCHMAN'S RESERVE PCD - PLAT "B", AS RECORDED IN PLAT BOOK 96, AT PAGE 102, A PORTION OF TRACT OS2, FRENCHMAN'S RESERVE PCD - PLAT "D", AS RECORDED IN PLAT BOOK 93, AT PAGE 123, TRACTS "G1" AND "G2", FRENCHMAN'S RESERVE PCD - PLAT E, AS RECORDED IN PLAT BOOK 101, AT PAGE 1, TRACTS A, B, C, D, E, H, OS1 AND OS2, FRENCHMAN'S RESERVE PCD - PLAT F, AS RECORDED IN PLAT BOOK 93, AT PAGE 82, TRACTS C AND D, FRENCHMAN'S RESERVE PCD - CLUBHOUSE, AS RECORDED IN PLAT BOOK 94, AT PAGE 138, PUBLIC RECORDS, PALM BEACH COUNTY, FLORIDA.

LYING IN SECTION 31, TOWNSHIP 41 SOUTH, RANGE 43 EAST,
CITY OF PALM BEACH GARDENS, PALM BEACH COUNTY, FLORIDA.

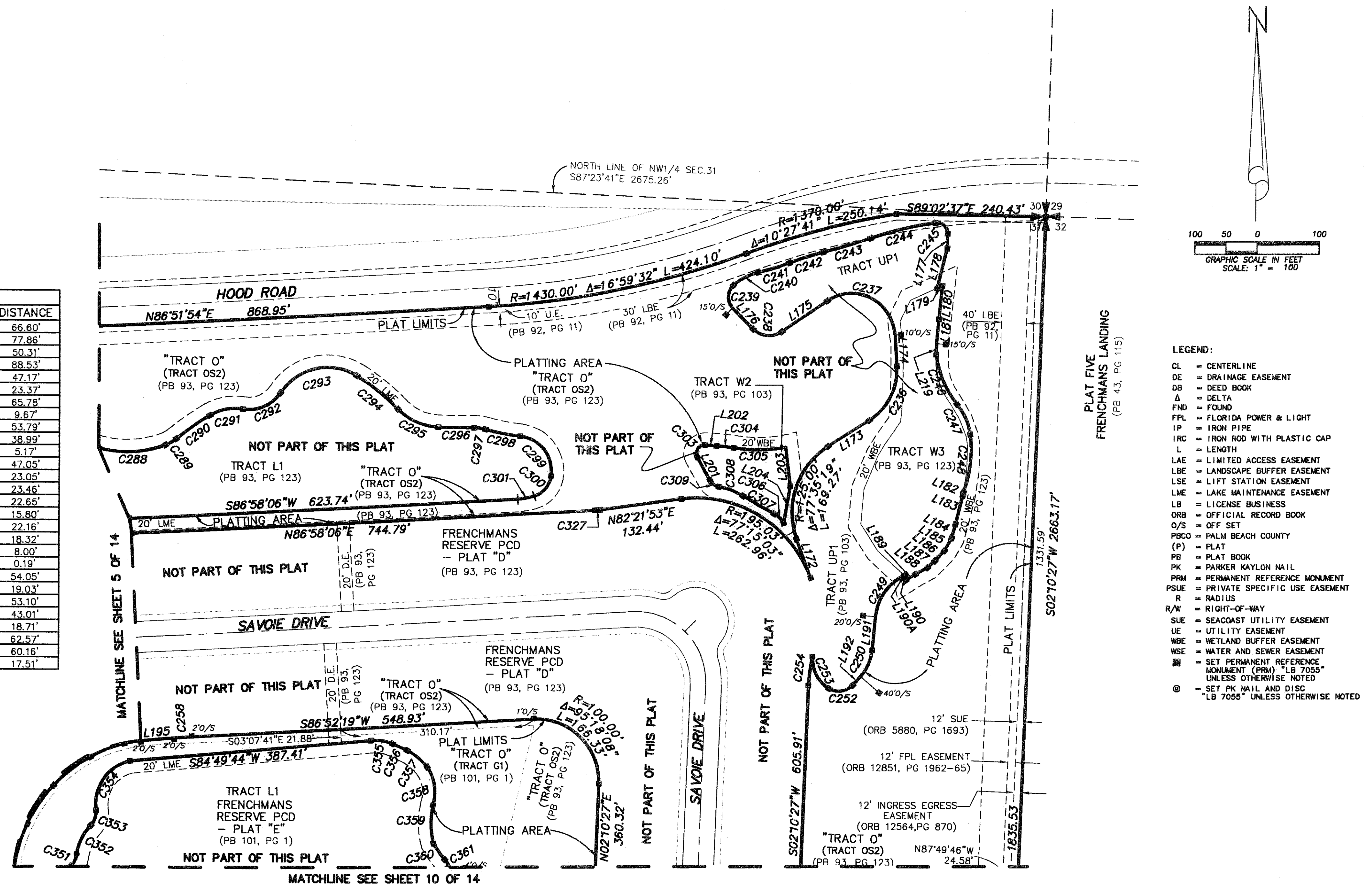
OCTOBER, 2006 SHEET 6 OF 15



KEY MAP
NOT TO SCALE

CURVE TABLE					
CURVE	RADIUS	CENTRAL ANGLE	LENGTH	CHORD BEARING	CHORD DISTANCE
C236	97.00'	60°46'11"	102.88'	N26°59'54"E	98.13'
C237	70.00'	120°44'37"	147.52'	N63°45'30"W	121.70'
C238	36.00'	79°10'28"	49.75'	S84°32'34"E	45.88'
C239	25.00'	93°03'49"	40.61'	S01°34'35"W	36.29'
C240	89.80'	29°04'49"	45.58'	S82°38'54"W	45.09'
C241	381.00'	7°54'45"	52.62'	N73°13'56"E	52.57'
C242	521.00'	6°15'48"	56.95'	S72°24'27"W	56.92'
C243	1025.00'	4°25'45"	79.24'	N73°19'28"E	79.22'
C244	566.96'	10°55'49"	108.16'	S76°34'30"W	107.99'
C245	17.00'	99°25'18"	29.50'	N48°14'56"W	25.93'
C246	155.94'	32°13'05"	87.69'	S23°06'06"E	86.54'
C247	100.00'	31°08'59"	54.37'	N23°38'09"W	53.70'
C248	185.46'	29°06'03"	94.19'	N06°29'23"E	93.19'
C249	82.00'	59°27'35"	85.10'	S35°06'28"W	81.33'
C250	75.00'	35°58'32"	47.09'	N23°21'57"E	46.32'
C252	30.00'	80°26'01"	42.11'	N81°34'13"E	38.74'
C253	56.65'	61°47'18"	61.09'	S27°19'08"E	58.17'
C254	250.00'	10°48'50"	47.18'	S07°34'52"W	47.11'
C258	1000.00'	13°31'31"	28.66'	S86°03'03"W	28.66'
C288	178.08'	35°17'57"	108.48'	N86°43'30"E	108.77'
C289	60.00'	19°03'56"	19.97'	N59°32'34"E	19.87'
C290	441.80'	8°35'17"	66.22'	S54°18'15"W	66.16'
C291	78.00'	40°39'43"	55.36'	S78°55'45"W	54.20'
C292	60.00'	66°16'47"	69.41'	N66°07'13"E	65.60'
C293	90.00'	88°21'51"	138.80'	S77°09'44"W	125.45'
C294	320.50'	15°11'09"	84.95'	N51°03'46"W	84.70'
C295	95.00'	44°06'51"	73.14'	S65°31'37"E	71.35'
C296	1133.32'	2°54'51"	57.64'	S89°02'28"E	57.63'
C297	60.00'	17°30'39"	18.34'	N81°44'34"W	18.27'
C298	282.80'	11°33'15"	57.03'	S78°45'52"E	56.93'
C299	56.00'	92°52'24"	90.77'	N38°06'18"W	81.16'
C300	40.00'	63°10'07"	44.10'	N39°54'56"E	41.90'
C301	100.00'	15°28'05"	27.00'	N79°14'04"E	26.91'
C303	13.00'	123°05'14"	27.93'	S32°21'59"W	22.86'
C304	295.00'	5°25'35"	27.94'	N83°22'37"W	27.93'
C305	238.31'	20°15'12"	84.24'	N89°12'34"E	83.80'
C306	37.18'	33°45'16"	21.90'	N46°04'35"W	21.59'
C307	667.00'	4°55'05"	57.25'	S80°29'41"E	57.23'
C308	106.17'	22°44'03"	42.13'	N69°24'10"W	41.85'
C309	20.00'	51°35'33"	18.01'	S54°58'25"E	17.41'
C327	100.00'	4°36'14"	8.04'	N84°40'00"E	8.03'
C351	30.00'	43°46'17"	22.92'	N26°00'18"E	22.37'
C352	83.28'	35°21'03"	51.38'	S26°09'29"W	50.57'
C353	30.00'	50°36'43"	26.50'	N19°09'55"E	25.65'
C354	71.57'	84°29'42"	105.55'	S34°15'40"W	96.24'
C355	70.00'	29°09'17"	35.62'	N81°38'57"W	35.24'
C356	459.34'	3°12'11"	25.68'	N65°28'13"W	25.68'
C357	89.43'	26°55'17"	42.02'	N50°24'29"W	41.63'
C358	68.71'	53°34'37"	64.25'	N09°00'59"W	61.93'
C359	121.20'	28°50'20"	61.00'	S00°48'41"E	60.36'
C360	164.31'	11°11'23"	32.09'	S34°43'08"E	32.04'
C361	70.00'	11°43'28"	14.32'	N34°27'06"W	14.30'

LINE TABLE		
LINE	BEARING	DISTANCE
L172	S20°12'20"E	66.60'
L173	S57°23'00"W	77.86'
L174	S03°23'11"E	50.31'
L175	N55°52'12"E	88.53'
L176	S44°57'19"E	47.17'
L177	N01°27'43"E	23.37'
L178	N14°19'44"E	65.78'
L179	S65°40'04"W	9.67'
L180	N06°10'16"E	53.79'
L181	N05°43'03"E	38.99'
L182	N08°32'03"E	5.17'
L183	N14°20'28"E	47.05'
L184	N14°38'27"E	23.05'
L185	N29°46'46"E	23.46'
L186	N43°18'16"E	22.65'
L187	N47°31'45"E	15.80'
L188	N61°13'29"E	22.16'
L189	N58°01'47"E	18.32'
L190	S14°03'13"E	8.00'
L190A	S49°16'48"E	0.19'
L191	N05°22'41"E	54.05'
L192	N41°21'13"E	19.03'
L195	N84°34'19"E	53.10'
L201	S29°10'38"E	43.01'
L202	N86°05'25"W	18.71'
L203	N06°56'32"W	62.57'
L204	N09°48'13"E	60.16'
L219	N01°38'19"E	17.51'



- LEGEND:
- CL = CENTERLINE
 - DE = DRAINAGE EASEMENT
 - DB = DEED BOOK
 - Δ = DELTA
 - FND = FOUND
 - FPL = FLORIDA POWER & LIGHT
 - IP = IRON PIPE
 - IRC = IRON ROD WITH PLASTIC CAP
 - L = LENGTH
 - LAE = LIMITED ACCESS EASEMENT
 - LBE = LANDSCAPE BUFFER EASEMENT
 - LSE = LIFT STATION EASEMENT
 - LME = LAKE MAINTENANCE EASEMENT
 - LB = LICENSE BUSINESS
 - ORB = OFFICIAL RECORD BOOK
 - O/S = OFF SET
 - PBCO = PALM BEACH COUNTY
 - (P) = PLAT
 - PB = PLAT BOOK
 - PK = PARKER KAYLON NAIL
 - PRM = PERMANENT REFERENCE MONUMENT
 - PSUE = PRIVATE SPECIFIC USE EASEMENT
 - R = RADIUS
 - R/W = RIGHT-OF-WAY
 - SUE = SEACOAST UTILITY EASEMENT
 - UE = UTILITY EASEMENT
 - WBE = WETLAND BUFFER EASEMENT
 - WSE = WATER AND SEWER EASEMENT
 - = SET PERMANENT REFERENCE MONUMENT (PRM) "LB 7055" UNLESS OTHERWISE NOTED
 - ⊙ = SET PK NAIL AND DISC "LB 7055" UNLESS OTHERWISE NOTED

Wantman Group, Inc.
 Engineering ♦ Surveying ♦ Mapping
 2035 VISTA PARKWAY, SUITE 100
 WEST PALM BEACH, FL 33411
 (561) 687-2220 phone (561) 687-1110 fax
 CERT. No. 6091 LB No. 7055
 THIS INSTRUMENT WAS PREPARED BY DEREK G. ZEMAN, P.S.M.
 PROFESSIONAL SURVEYOR AND MAPPER, LICENSE NO. 5655
 FOR THE FIRM: WANTMAN GROUP, INC.

FILED: 10/10/06 FRENCHMAN'S RESERVE PCD - PLAT D, SHEET 6 OF 15, 2006