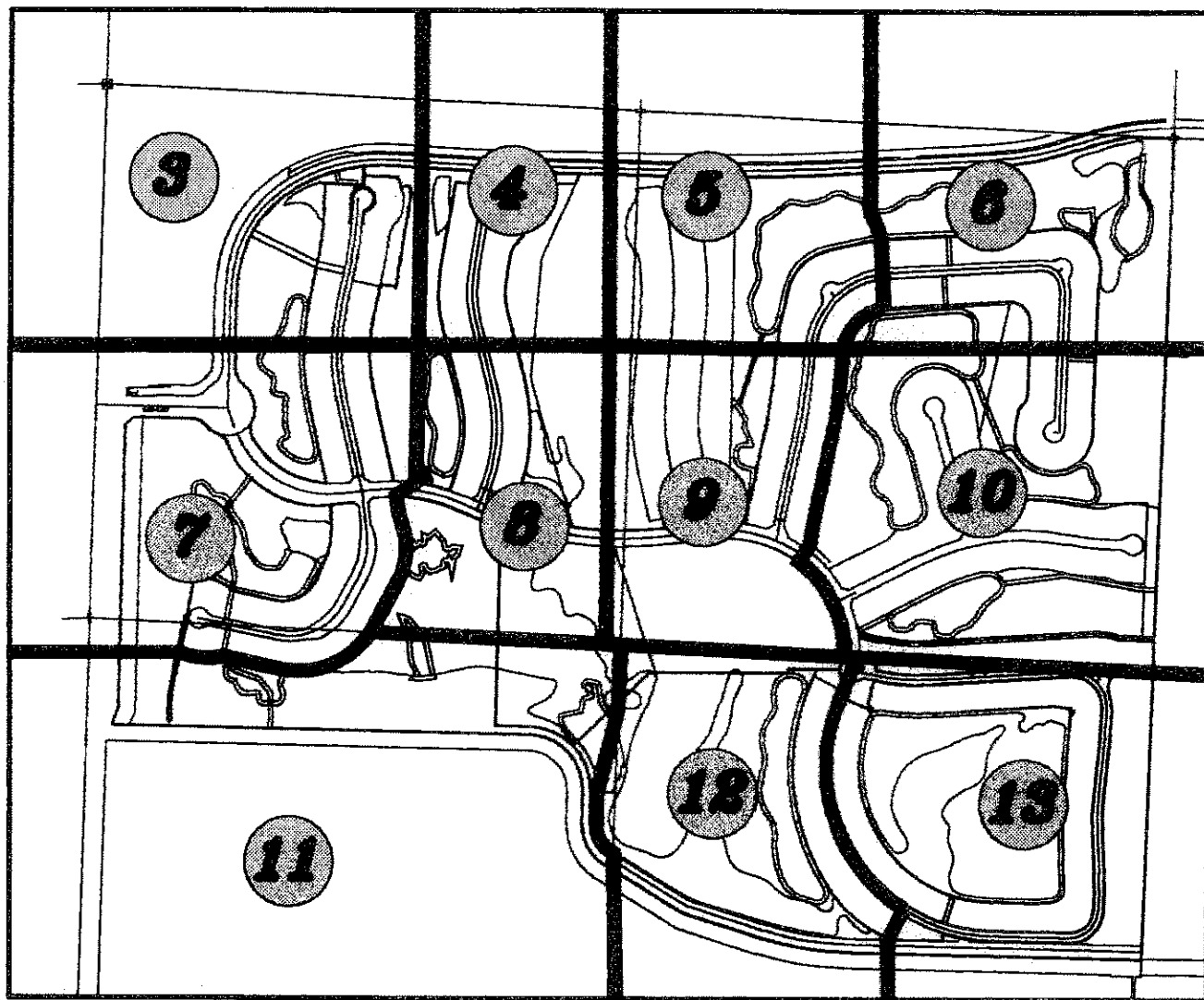


FRENCHMAN'S RESERVE PCD - GOLF COURSE

BEING A REPLAT OF TRACT G AND A PORTION OF TRACT C, FRENCHMAN'S RESERVE PCD - PLAT ONE, AS RECORDED IN PLAT BOOK 92, AT PAGE 11, TRACT OS1, FRENCHMAN'S RESERVE PCD - PLAT "A", AS RECORDED IN PLAT BOOK 92, AT PAGE 194, TRACTS OS1 AND OS4, FRENCHMAN'S RESERVE PCD - PLAT "B", AS RECORDED IN PLAT BOOK 96, AT PAGE 102, A PORTION OF TRACT OS2, FRENCHMAN'S RESERVE PCD - PLAT "D", AS RECORDED IN PLAT BOOK 93, AT PAGE 123, TRACTS "G1" AND "G2", FRENCHMAN'S RESERVE PCD - PLAT E, AS RECORDED IN PLAT BOOK 101, AT PAGE 1, TRACTS A, B, C, D, E, H, OS1 AND OS2, FRENCHMAN'S RESERVE PCD - PLAT F, AS RECORDED IN PLAT BOOK 93, AT PAGE 82, TRACTS C AND D, FRENCHMAN'S RESERVE PCD - CLUBHOUSE, AS RECORDED IN PLAT BOOK 94, AT PAGE 138, PUBLIC RECORDS, PALM BEACH COUNTY, FLORIDA.

LYING IN SECTION 31, TOWNSHIP 41 SOUTH, RANGE 43 EAST,
CITY OF PALM BEACH GARDENS, PALM BEACH COUNTY, FLORIDA.

OCTOBER, 2006 SHEET 7 OF 15



KEY MAP
NOT TO SCALE

79

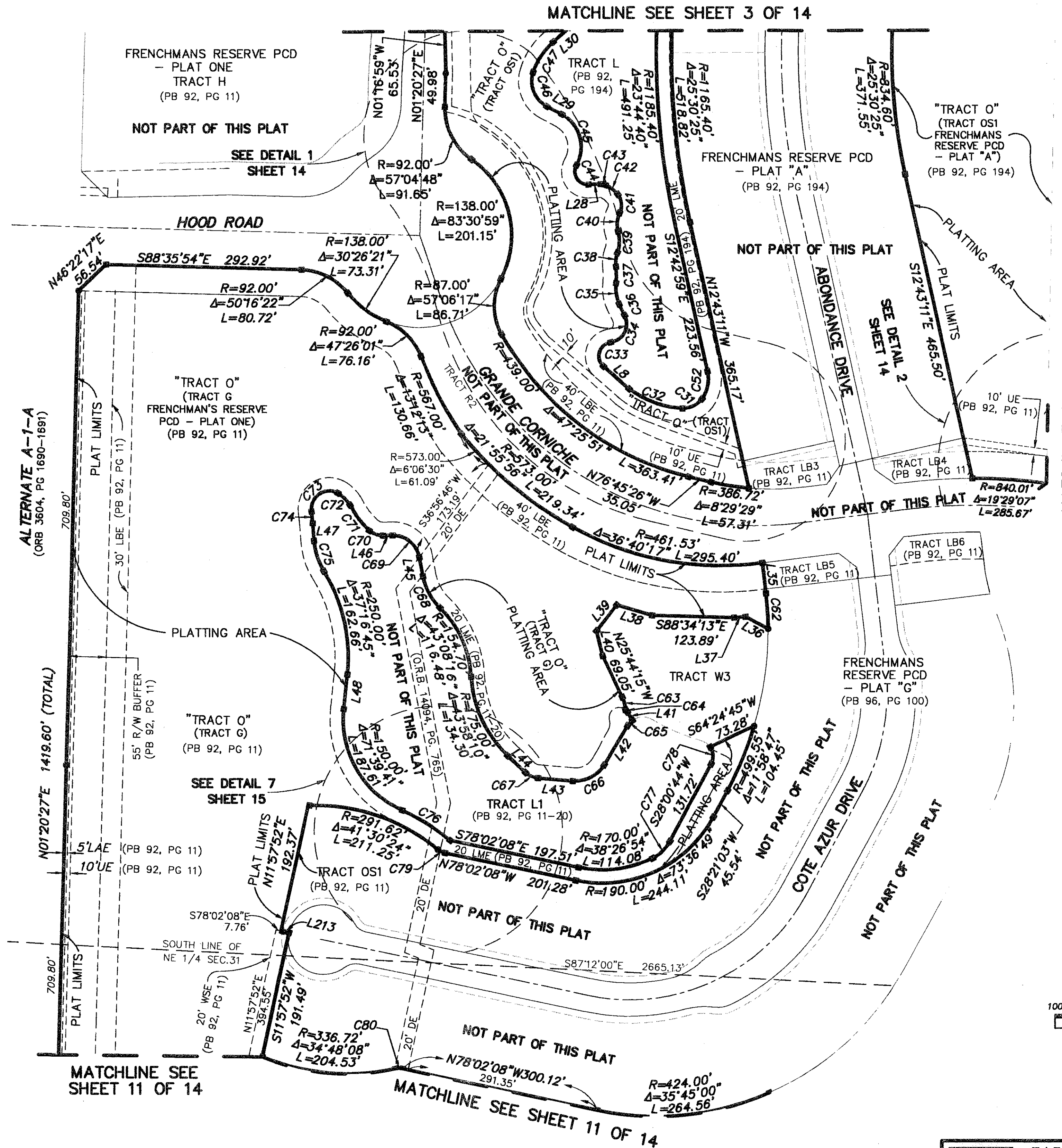
STATE OF FLORIDA
COUNTY OF PALM BEACH
THIS PLAT WAS FILED FOR
RECORD AT _____ M.
THIS _____ DAY OF _____
A.D. 2006 AND DULY RECORDED
IN PLAT BOOK _____ ON
PAGES _____ AND _____

SHARON R. BOCK
CLERK AND COMPTROLLER

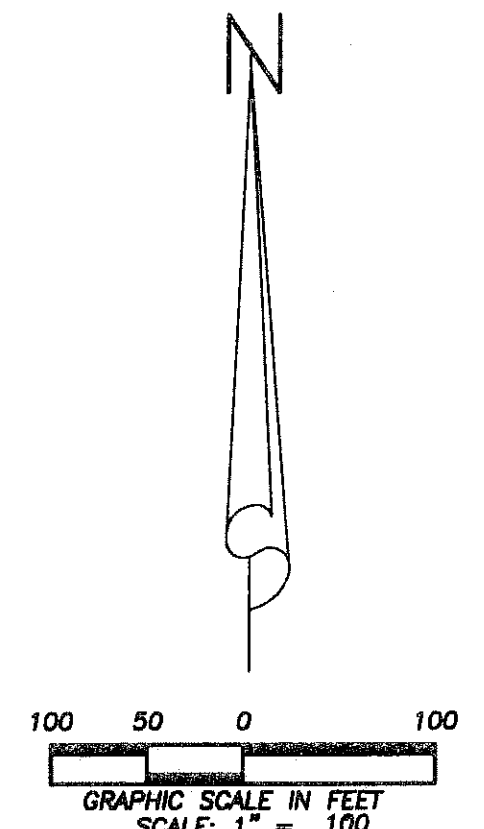
BY: _____
DEPUTY CLERK

CURVE	RADIUS	CENTRAL ANGLE	LENGTH	CHORD BEARING	CHORD DISTANCE
C31	34.00'	57°07'30"	33.90'	N64°07'06"E	32.51'
C32	145.35'	34°08'01"	86.59'	S70°15'08"E	85.32'
C33	20.67'	132°06'54"	47.66'	S16°39'17"W	37.78'
C34	27.65'	110°43'30"	53.43'	N27°20'59"E	45.50'
C35	59.09'	31°16'07"	32.25'	S08°38'01"E	31.85'
C36	288.69'	3°44'41"	18.87'	S26°08'25"E	18.86'
C37	91.19'	15°17'42"	24.34'	N00°38'49"W	24.27'
C38	42.01'	28°55'26"	21.21'	S06°10'03"W	20.98'
C39	48.34'	38°11'28"	32.22'	N01°32'02"E	31.63'
C40	36.45'	45°18'43"	28.82'	S05°05'40"W	28.08'
C41	25.05'	67°38'52"	29.58'	N06°04'25"W	27.89'
C42	51.37'	26°23'41"	23.66'	N53°05'41"W	23.45'
C43	15.00'	26°23'46"	6.91'	N79°29'24"W	6.85'
C44	19.57'	122°07'51"	41.72'	S31°37'22"E	34.25'
C45	54.67'	91°47'54"	87.59'	N16°27'23"W	78.52'
C46	42.48'	80°30'08"	59.69'	S22°06'16"E	54.90'
C47	101.06'	30°57'09"	54.60'	S33°37'22"W	53.93'
C52	50.74'	48°13'33"	42.71'	N11°26'35"E	41.46'
C62	499.55'	6°05'48"	53.15'	N03°39'43"W	53.13'
C63	45.00'	24°44'04"	19.43'	N13°22'13"W	19.28'
C64	15.00'	18°20'26"	4.80'	N42°51'36"W	4.78'
C65	27.00'	23°02'35"	10.86'	S42°24'13"W	10.79'
C66	50.00'	64°05'04"	55.92'	N62°55'28"E	53.05'
C67	32.00'	38°01'50"	21.24'	S66°01'05"E	20.85'
C68	89.00'	35°18'08"	54.84'	S28°31'11"E	53.97'
C69	40.00'	80°30'53"	56.21'	N51°07'34"W	51.70'
C70	30.00'	43°11'57"	22.62'	S69°47'02"E	22.09'
C71	126.10'	21°51'33"	48.11'	S37°15'17"E	47.82'
C72	49.43'	29°34'43"	25.52'	N45°31'15"W	25.24'
C73	27.00'	128°13'17"	60.42'	S55°34'45"W	48.58'
C74	233.63'	4°15'32"	17.37'	N06°24'07"W	17.36'
C75	100.00'	27°24'54"	47.85'	S17°58'48"E	47.39'
C76	311.62'	15°44'38"	85.63'	N58°11'51"W	85.36'
C77	60.00'	35°30'13"	37.18'	N45°45'51"E	36.59'
C78	24.00'	62°48'42"	26.31'	N03°23'37"W	25.01'
C79	25.00'	27°28'10"	11.99'	S64°17'33"E	11.88'
C80	25.00'	24°19'23"	10.61'	S89°48'11"W	10.53'

LINE	BEARING	DISTANCE
L8	N49°24'10"W	51.21'
L28	S87°18'43"W	18.75'
L29	N62°21'20"W	25.57'
L30	N49°05'57"E	33.50'
L35	S06°42'37"E	46.48'
L36	S62°31'08"E	38.48'
L37	N85°27'31"E	17.10'
L38	S73°29'25"E	55.29'
L39	N37°51'14"E	49.20'
L40	N13°55'44"W	38.46'
L41	S31°27'51"E	14.90'
L42	S30°52'56"W	68.31'
L43	N85°02'00"W	52.82'
L44	N47°00'10"W	36.47'
L45	N10°52'07"W	29.02'
L46	S88°37'00"W	14.45'
L47	S04°16'21"E	26.34'
L48	S05°35'30"W	52.16'
L213	N78°02'08"W	12.24'



- LEGEND:
- CL = CENTERLINE
 - DE = DRAINAGE EASEMENT
 - DB = DEED BOOK
 - Δ = DELTA
 - FND = FOUND
 - FPL = FLORIDA POWER & LIGHT
 - IP = IRON PIPE
 - IRC = IRON ROD WITH PLASTIC CAP
 - L = LENGTH
 - LAE = LIMITED ACCESS EASEMENT
 - LBE = LANDSCAPE BUFFER EASEMENT
 - LSE = LIFT STATION EASEMENT
 - LME = LAKE MAINTENANCE EASEMENT
 - LB = LICENSE BUSINESS
 - ORB = OFFICIAL RECORD BOOK
 - O/S = OFF SET
 - PBCO = PALM BEACH COUNTY
 - (PB) = PLAT BOOK
 - (PG) = PLAT PAGE
 - PK = PARKER KAYLON NAIL
 - PRM = PERMANENT REFERENCE MONUMENT
 - PSUE = PRIVATE SPECIFIC USE EASEMENT
 - R = RADIUS
 - R/W = RIGHT-OF-WAY
 - SUE = SEACOAST UTILITY EASEMENT
 - UE = UTILITY EASEMENT
 - WBE = WETLAND BUFFER EASEMENT
 - WSE = WATER AND SEWER EASEMENT
 - ◻ = SET PERMANENT REFERENCE MONUMENT (PRM) "LB 7055" UNLESS OTHERWISE NOTED
 - ⊙ = SET PK NAIL AND DISC "LB 7055" UNLESS OTHERWISE NOTED



Wantman Group, Inc.
Engineering ♦ Surveying ♦ Mapping
2035 VISTA PARKWAY, SUITE 100
WEST PALM BEACH, FL 33411
(561) 687-2220 phone (561) 687-1110 fax
CERT No. 6091 - LB No. 7055
THIS INSTRUMENT WAS PREPARED BY DEREK G. ZEMAN, P.S.M.
PROFESSIONAL SURVEYOR AND MAPPER, LICENSE NO. 5655
FOR THE FIRM: WANTMAN GROUP, INC.