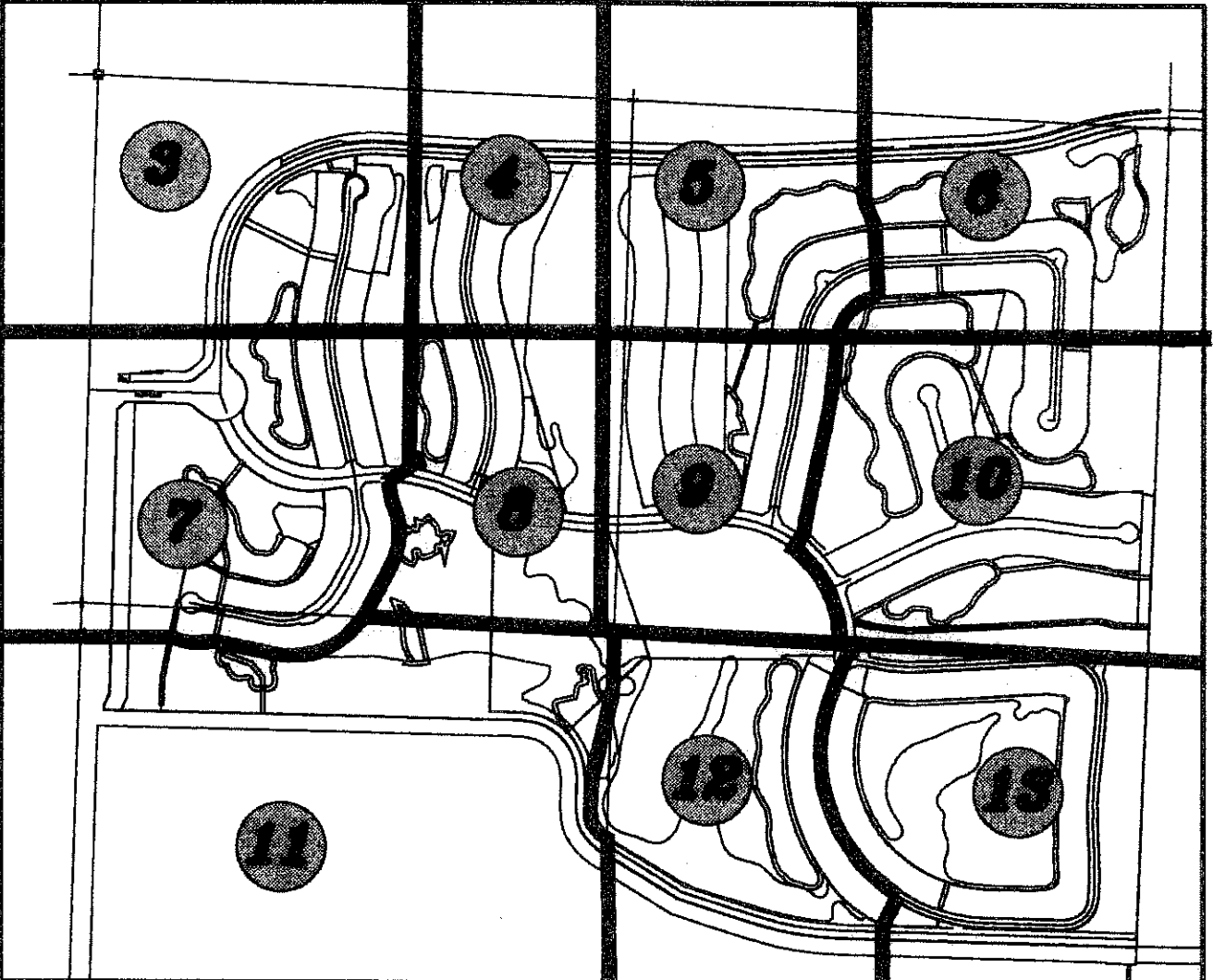


FRENCHMAN'S RESERVE PCD - GOLF COURSE

BEING A REPLAT OF TRACT G AND A PORTION OF TRACT C, FRENCHMAN'S RESERVE PCD - PLAT ONE, AS RECORDED IN PLAT BOOK 92, AT PAGE 11, TRACT OS1, FRENCHMAN'S RESERVE PCD - PLAT "A", AS RECORDED IN PLAT BOOK 92, AT PAGE 194, TRACTS OS1 AND OS4, FRENCHMAN'S RESERVE PCD - PLAT "B", AS RECORDED IN PLAT BOOK 96, AT PAGE 102, A PORTION OF TRACT OS2, FRENCHMAN'S RESERVE PCD - PLAT "D", AS RECORDED IN PLAT BOOK 93, AT PAGE 123, TRACTS "G1" AND "G2", FRENCHMAN'S RESERVE PCD - PLAT E, AS RECORDED IN PLAT BOOK 101, AT PAGE 1, TRACTS A, B, C, D, E, H, OS1 AND OS2, FRENCHMAN'S RESERVE PCD - PLAT F, AS RECORDED IN PLAT BOOK 93, AT PAGE 82, TRACTS C AND D, FRENCHMAN'S RESERVE PCD - CLUBHOUSE, AS RECORDED IN PLAT BOOK 94, AT PAGE 138, PUBLIC RECORDS, PALM BEACH COUNTY, FLORIDA.

LYING IN SECTION 31, TOWNSHIP 41 SOUTH, RANGE 43 EAST, CITY OF PALM BEACH GARDENS, PALM BEACH COUNTY, FLORIDA.

OCTOBER, 2008 SHEET 9 OF 15



KEY MAP NOT TO SCALE

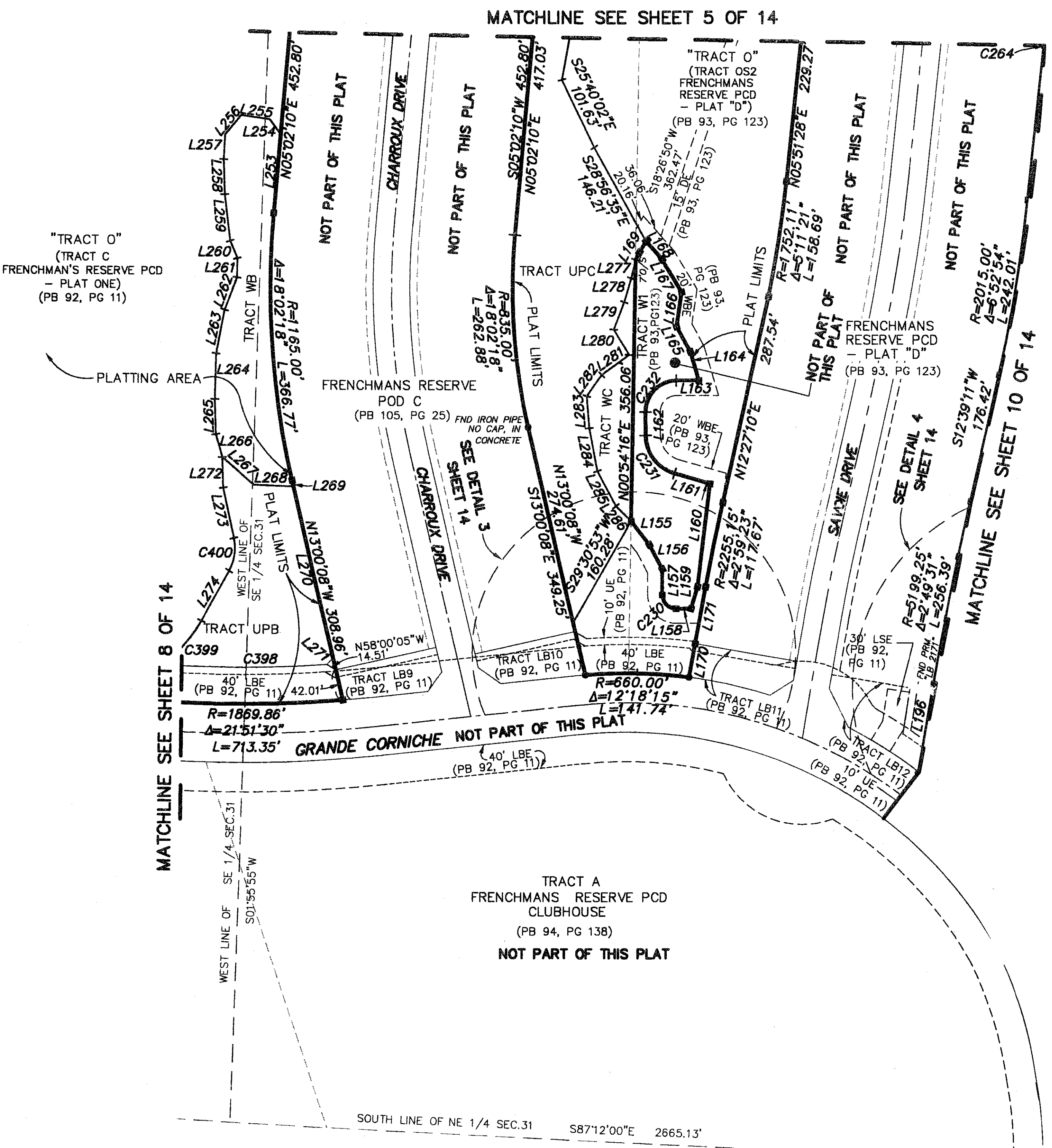
STATE OF FLORIDA
COUNTY OF PALM BEACH
THIS PLAT WAS FILED FOR
RECORD AT _____ M.
THIS _____ DAY OF _____
A.D. 2008 AND DULY RECORDED
IN PLAT BOOK _____ ON
PAGES _____ AND _____

SHARON R. BOCK
CLERK AND COMPTROLLER

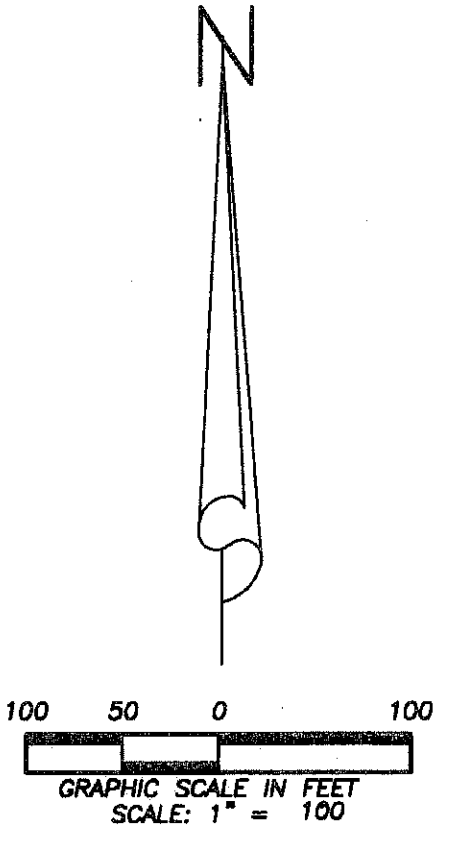
By: _____
DEPUTY CLERK

LINE	BEARING	DISTANCE
L155	S37°29'58"E	41.12'
L156	S27°50'36"E	37.56'
L157	S00°00'00"E	35.49'
L158	N89°47'36"E	20.23'
L159	N16°24'05"E	31.46'
L160	S06°46'10"W	141.62'
L161	N73°43'17"W	50.44'
L162	S00°29'14"E	31.43'
L163	N89°59'03"E	30.79'
L164	N16°19'19"W	41.04'
L165	N28°59'17"W	38.96'
L166	N08°14'37"E	47.86'
L167	N30°52'04"W	51.77'
L168	N41°24'04"W	33.35'
L169	S29°26'53"W	28.81'
L170	S10°02'44"W	47.18'
L171	S10°17'12"W	80.00'
L196	N09°35'29"E	121.05'
L253	S05°02'10"W	107.92'
L254	S36°26'27"E	25.02'
L255	S82°00'38"E	39.23'
L256	N39°23'23"E	34.75'
L257	N03°14'49"E	33.55'
L258	N01°49'10"W	47.94'
L259	S06°37'34"E	63.95'
L260	S22°26'30"E	25.44'
L261	S01°02'52"W	26.05'
L262	S20°49'08"W	47.18'
L263	S10°57'42"W	60.94'
L264	S01°32'02"W	62.02'
L265	S01°45'09"E	47.51'
L266	S15°49'10"E	32.53'
L267	S48°36'32"E	57.06'
L268	S87°56'02"E	54.26'
L269	S13°00'08"E	8.50'
L270	S13°00'08"E	241.51'
L271	N43°05'16"E	12.32'
L272	S01°44'32"E	42.12'
L273	S12°05'16"E	69.95'
L274	S28°35'30"W	79.10'
L277	S13°02'47"W	26.22'
L278	S16°45'27"W	33.68'
L279	S20°29'39"W	40.23'
L280	S31°17'32"E	40.32'
L281	S53°40'31"W	46.25'
L282	S35°43'55"W	35.24'
L283	S04°34'01"E	43.32'
L284	S10°52'29"E	60.21'
L285	S27°51'35"E	53.94'
L286	S46°13'51"E	29.05'

CURVE	RADIUS	CENTRAL ANGLE	LENGTH	CHORD BEARING	CHORD DISTANCE
C230	19.00'	90°12'24"	29.91'	S45°06'12"E	26.92'
C231	55.00'	73°14'03"	70.30'	S37°06'15"E	65.61'
C232	42.00'	90°28'17"	66.32'	S44°44'55"W	59.64'
C264	242.03'	1°21'53"	5.76'	S07°08'56"W	5.76'
C398	1819.86'	7°03'38"	224.26'	N89°17'35"E	224.12'
C399	200.00'	23°30'11"	82.04'	N40°20'35"E	81.47'
C400	65.00'	40°40'46"	46.15'	N08°15'07"E	45.19'



- LEGEND:
- CL = CENTERLINE
 - DE = DRAINAGE EASEMENT
 - DB = DEED BOOK
 - Δ = DELTA
 - FND = FOUND
 - FPL = FLORIDA POWER & LIGHT
 - FP = IRON PIPE
 - IRC = IRON ROD WITH PLASTIC CAP
 - L = LENGTH
 - LAE = LIMITED ACCESS EASEMENT
 - LBE = LANDSCAPE BUFFER EASEMENT
 - LSE = LIFT STATION EASEMENT
 - LME = LAKE MAINTENANCE EASEMENT
 - LB = LICENSE BUSINESS
 - ORB = OFFICIAL RECORD BOOK
 - O/S = OFF SET
 - PBCO = PALM BEACH COUNTY
 - (P) = PLAT
 - PB = PLAT BOOK
 - PK = PARKER KEYLON NAIL
 - PRM = PERMANENT REFERENCE MONUMENT
 - PSUE = PRIVATE SPECIFIC USE EASEMENT
 - R = RADIUS
 - R/W = RIGHT-OF-WAY
 - SUE = SEACOAST UTILITY EASEMENT
 - UE = UTILITY EASEMENT
 - WBE = WETLAND BUFFER EASEMENT
 - WE = WATER AND SEWER EASEMENT
 - SRM = SET PERMANENT REFERENCE MONUMENT (PRM) "LB 7055" UNLESS OTHERWISE NOTED
 - ⊙ = SET PK NAIL AND DISC "LB 7055" UNLESS OTHERWISE NOTED



C:\TOLLABROS\FRENCHMAN GOLF COURSE\DWG\218PLAT_GOLF COURSE.dwg SHEETS Nov 13, 2008

Wantman Group, Inc.
Engineering ♦ Surveying ♦ Mapping
2035 VISTA PARKWAY, SUITE 100
WEST PALM BEACH, FL 33411
(561) 687-2220 phone (561) 687-1110 fax
CERT No. 6091 - LB No. 7055
THIS INSTRUMENT WAS PREPARED BY DEREK G. ZEMAN, P.S.M.
PROFESSIONAL SURVEYOR AND MAPPER, LICENSE NO. 5655
FOR THE FIRM: WANTMAN GROUP, INC.