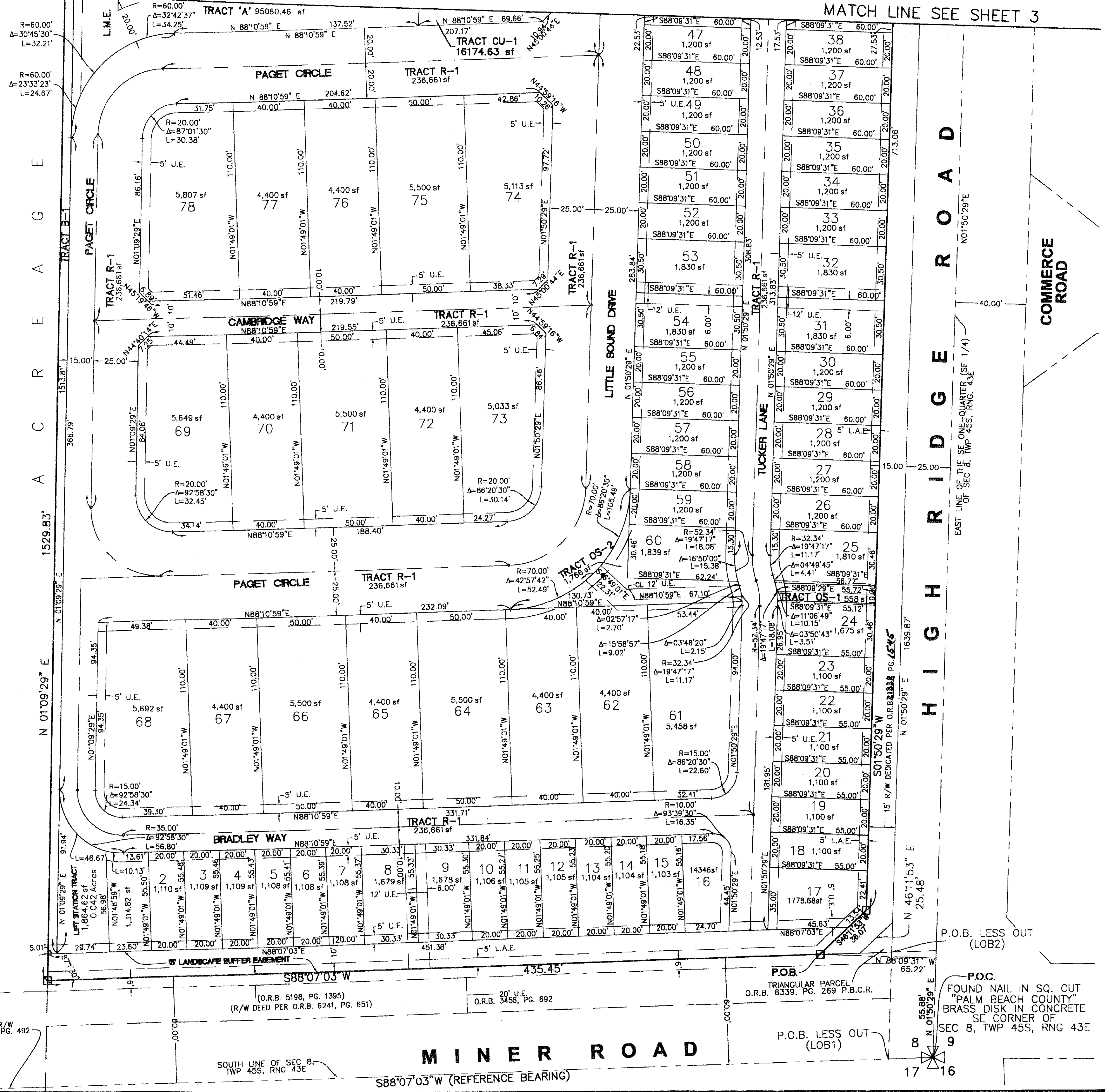


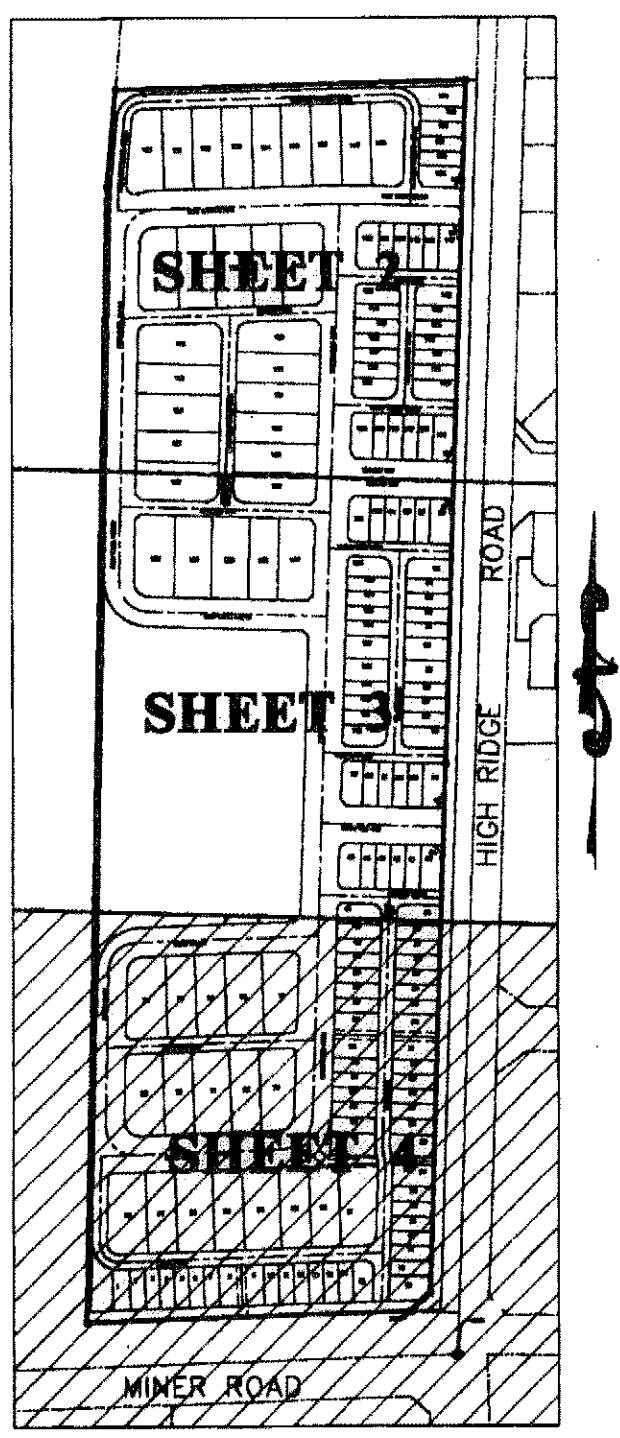
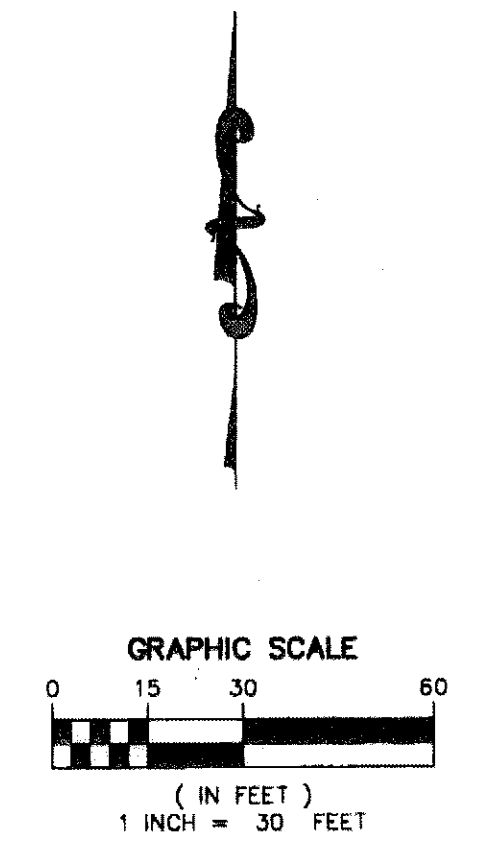
"HIGH RIDGE PUD"

A REPLAT OF LOTS 33, 34, 35 AND 36 OF "PLAT OF HIGH RIDGE SUBDIVISION (PLAT BOOK 22, PAGE 6, PALM BEACH COUNTY RECORDS) AND THE SOUTH 1/2 OF GOVERNMENT LOT 7, OF THE SOUTHEAST QUARTER (1/4), OF SECTION 8, TOWNSHIP 45 SOUTH, RANGE 43 EAST, CITY OF BOYNTON BEACH, PALM BEACH COUNTY, FLORIDA.
 JUNE 2006 SHEET 4 OF 4

93



- LEGEND:**
- M.P.B. = MISCELLANEOUS PLAT BOOK
 - P.B. = PLAT BOOK
 - P.G. = PAGE
 - O.R.B. = OFFICIAL RECORDS BOOK
 - B.C.R. = BROWARD COUNTY RECORDS
 - D.C.R. = DADE COUNTY RECORDS
 - R = RADIUS
 - Δ = CENTRAL ANGLE
 - L = ARC LENGTH
 - U.E. = UTILITY EASEMENT
 - D.E. = DRAINAGE EASEMENT
 - SQ. FT. = SQUARE FEET
 - ⊥ = NON VEHICULAR ACCESS LINE
 - C = CENTERLINE
 - C.D. = CHORD DISTANCE
 - C.B. = CHORD BEARING
 - R/W = RIGHT OF WAY
 - D.O.T. = DEPARTMENT OF TRANSPORTATION
 - S.E. = SIDEWALK EASEMENT
 - U.D. & S.E. = UTILITY, DRAINAGE AND SIDEWALK EASEMENT
 - I.E.U. & D.E. = INGRESS, EGRESS, UTILITY AND DRAINAGE EASEMENT
 - C.M.E. = CANAL MAINTENANCE EASEMENT
 - L.M.E. = LAKE MAINTENANCE EASEMENT
 - L.A.E. = LAKE ACCESS EASEMENT
 - L.S.E. = LIFT STATION EASEMENT
 - A.T.T.E. = AMERICAN TELEPHONE & TELEGRAPH EASEMENT
 - B.S.E. = BELL SOUTH EASEMENT
 - C.B. = CHORD BEARING
 - C.D. = CHORD DISTANCE
 - S.S.E. = SAFE SIGHT EASEMENT
 - L.B.E. = LANDSCAPE BUFFER EASEMENT
 - ⊠ = P.R.M. = PERMANENT REFERENCE MONUMENT (18" METAL ROD WITH ALUMINUM DISK IN 24" LONG CONCRETE - 4" X 4" SQUARE)
 - = PCP = PERMANENT CONTROL POINT
 - L.E. = LANDSCAPE EASEMENT
 - C&S/FCD = CENTRAL AND SOUTH FLORIDA FLOOD CONTROL DISTRICT
 - NTS = NOT TO SCALE
 - SSE = SAFE SIGHT EASEMENT



P.O.C. FOUND NAIL IN SQ. CUT "PALM BEACH COUNTY" BRASS DISK IN CONCRETE SE CORNER OF SEC 8, TWP 45S, RNG 43E

MINER ROAD

17 16