

PALM BEACH PARK OF COMMERCE, P.I.P.D.-PLAT IV

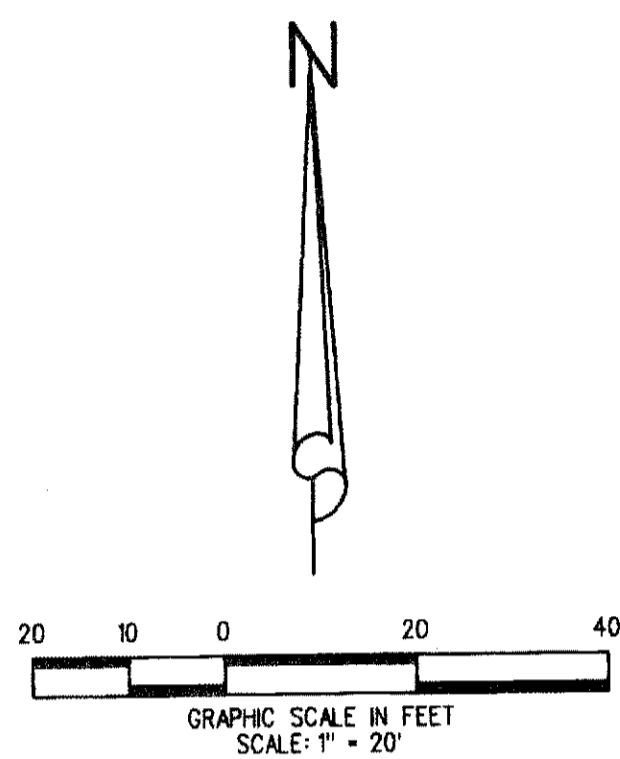
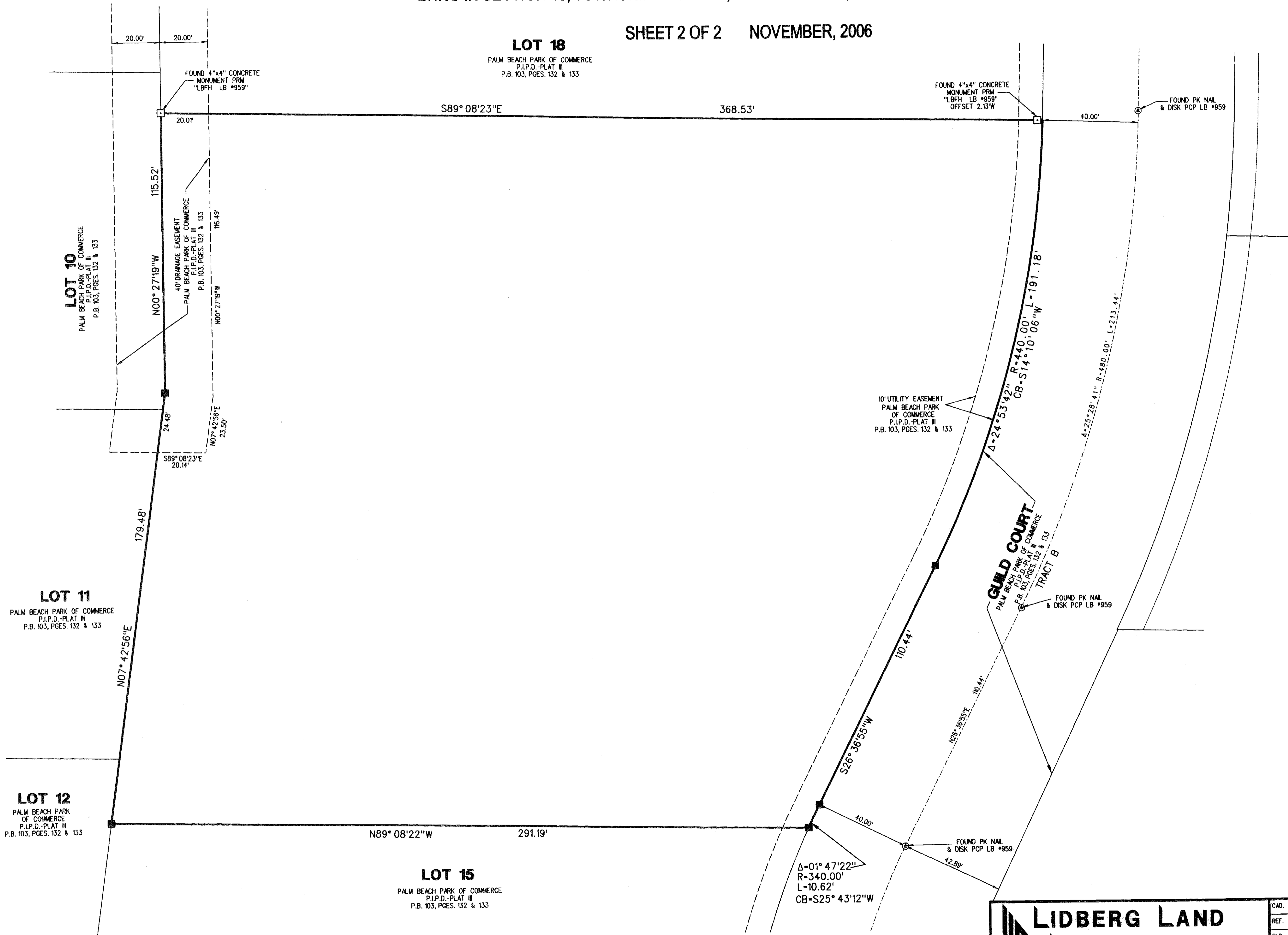
BEING A REPLAT OF LOTS 16 AND 17, ACCORDING TO PALM BEACH PARK OF COMMERCE, P.I.P.D.-PLAT III, RECORDED IN PLAT BOOK 103, PAGES 132 AND 133, PUBLIC RECORDS OF PALM BEACH COUNTY, FLORIDA, LYING IN SECTION 18, TOWNSHIP 41 SOUTH, RANGE 41 EAST, PALM BEACH COUNTY, FLORIDA.

95

SHEET 2 OF 2 NOVEMBER, 2006

LOT 18

PALM BEACH PARK OF COMMERCE
P.I.P.D.-PLAT III
P.B. 103, PAGES 132 & 133



SUBDIVISION P.B. PARK OF COMMERCE, PLAT 4 - REPLAT
 BOOK 103 PAGES 132 & 133
 PLAT # 71
 DATE 03/07/06
 FILE NAME

LIDBERG LAND SURVEYING, INC.
 675 West Indiantown Road, Suite 200,
 Jupiter, Florida 33458 TEL. 561-746-8454

CAD.	K:\JUST \ 184141 \ 05-121306 \ 05-121306.DGN		
REF.			
FLD.	J.P.	FB.	PG.
OFF.	L.J.C.	505	25
CND.	D.C.L.	SHEET 2 OF 2	DWG. 005-12P
			JOB 05-121-306 DATE 03/07/06