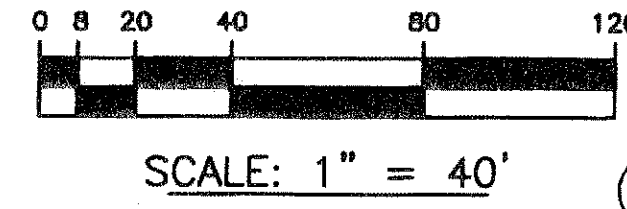


MALLORY CREEK AT ABACOA - PLAT ONE

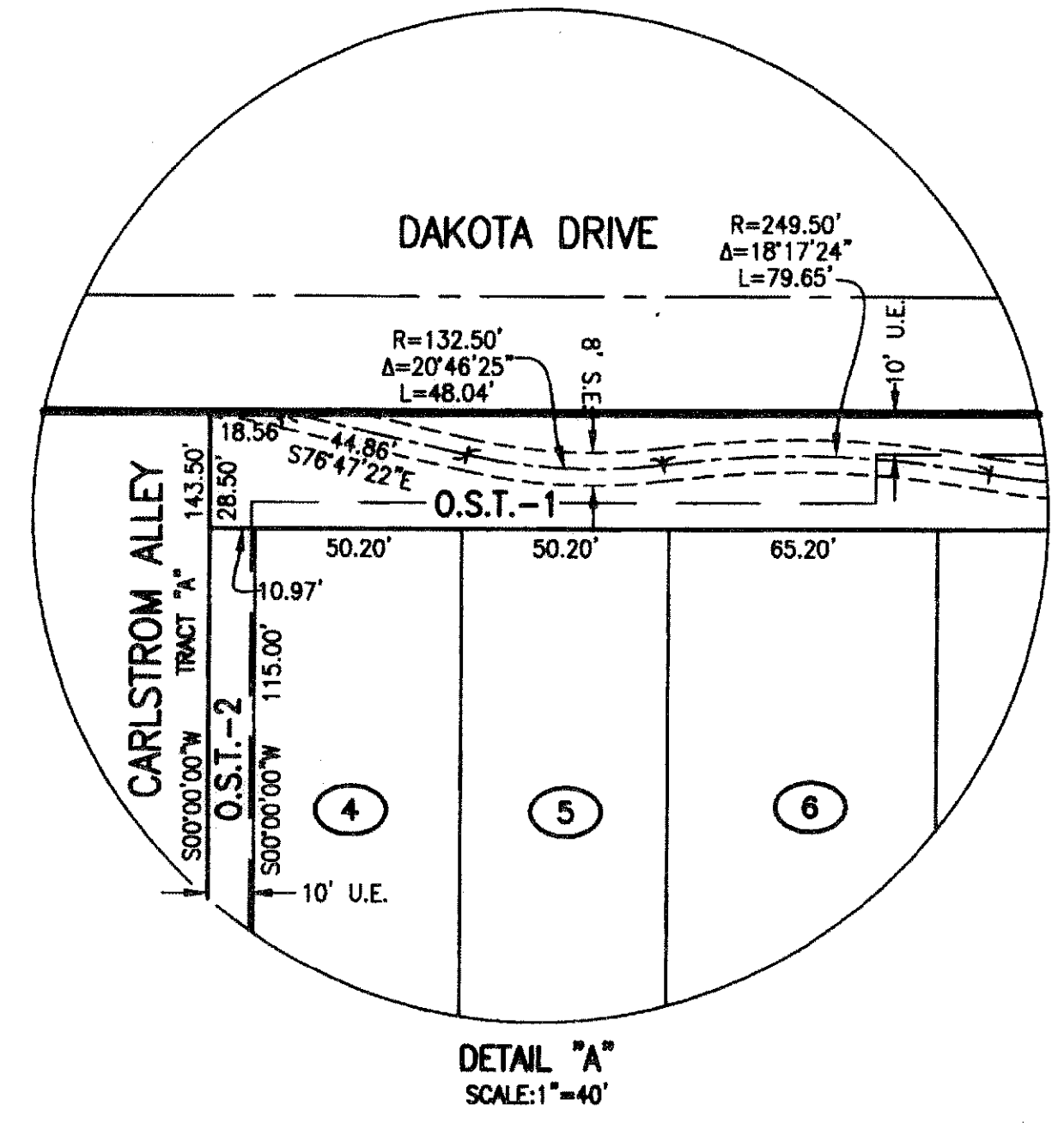
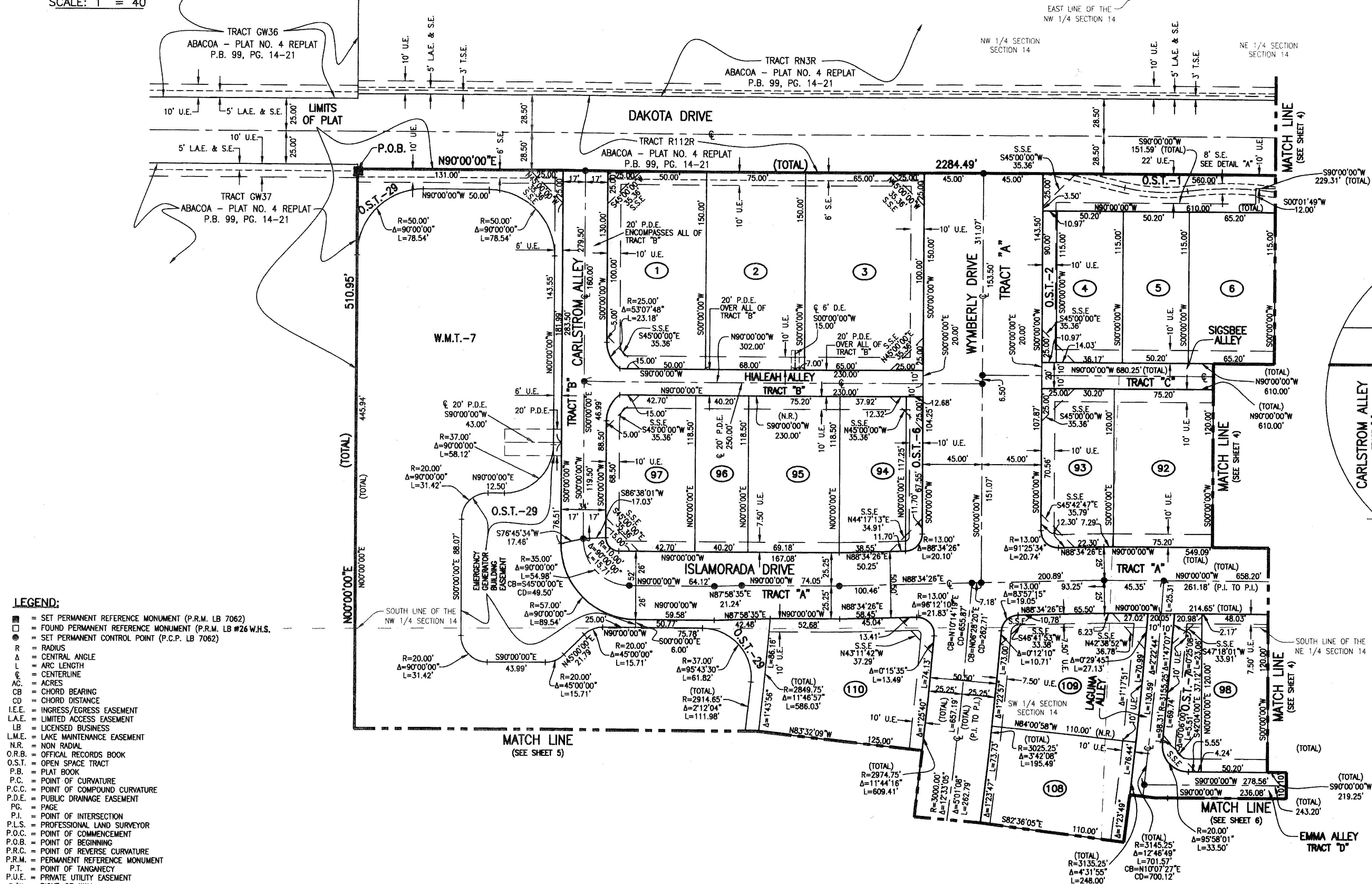
BEING A REPLAT OF TRACT RN4R ACCORDING TO ABACOA - PLAT NO. 4 REPLAT AS RECORDED IN PLAT BOOK 99, PAGES 14 THROUGH 21, OF THE PUBLIC RECORDS OF PALM BEACH COUNTY, FLORIDA, LYING IN SECTION 14, TOWNSHIP 41 SOUTH, RANGE 42 EAST, TOWN OF JUPITER, PALM BEACH COUNTY, FLORIDA

SHEET 3 OF 17 AUGUST, 2006

THIS INSTRUMENT PREPARED BY
 WILBUR F. DIVINE, P.S.M. LS-4190 STATE OF FLORIDA
 ARCADIS G & M, INC. LB 7062
 ENGINEERS PLANNERS SURVEYORS
 2081 VISTA PARKWAY
 WEST PALM BEACH, FLORIDA 33411



99



- LEGEND:**
- = SET PERMANENT REFERENCE MONUMENT (P.R.M. LB 7062)
 - = FOUND PERMANENT REFERENCE MONUMENT (P.R.M. LB #26 W.H.S.)
 - = SET PERMANENT CONTROL POINT (P.C.P. LB 7062)
 - R = RADIUS
 - Δ = CENTRAL ANGLE
 - L = ARC LENGTH
 - C = CENTERLINE
 - AC = ACRES
 - CB = CHORD BEARING
 - CD = CHORD DISTANCE
 - I.E.E. = INGRESS/EGRESS EASEMENT
 - L.A.E. = LIMITED ACCESS EASEMENT
 - LB = LICENSED BUSINESS
 - L.M.E. = LAKE MAINTENANCE EASEMENT
 - N.R. = NON RADIAL
 - O.R.B. = OFFICIAL RECORDS BOOK
 - O.S.T. = OPEN SPACE TRACT
 - P.B. = PLAT BOOK
 - P.C. = POINT OF CURVATURE
 - P.C.C. = POINT OF COMPOUND CURVATURE
 - P.D.E. = PUBLIC DRAINAGE EASEMENT
 - PG. = PAGE
 - P.I. = POINT OF INTERSECTION
 - P.L.S. = PROFESSIONAL LAND SURVEYOR
 - P.O.C. = POINT OF COMMENCEMENT
 - P.O.B. = POINT OF BEGINNING
 - P.R.C. = POINT OF REVERSE CURVATURE
 - P.R.M. = PERMANENT REFERENCE MONUMENT
 - P.T. = POINT OF TANGENCY
 - P.U.E. = PRIVATE UTILITY EASEMENT
 - R/W = RIGHT-OF-WAY
 - S.E. = SIDEWALK EASEMENT
 - S.S.E. = SAFE SITE EASEMENT
 - T.S.E. = TEMPORARY SIDEWALK EASEMENT
 - U.E. = UTILITY EASEMENT
 - W.M.E. = WATER MANAGEMENT EASEMENT
 - W.M.T. = WATER MANAGEMENT TRACT

NOTE- ALL LINES INTERSECTING CIRCULAR CURVES ARE RADIAL UNLESS NOTED.

