

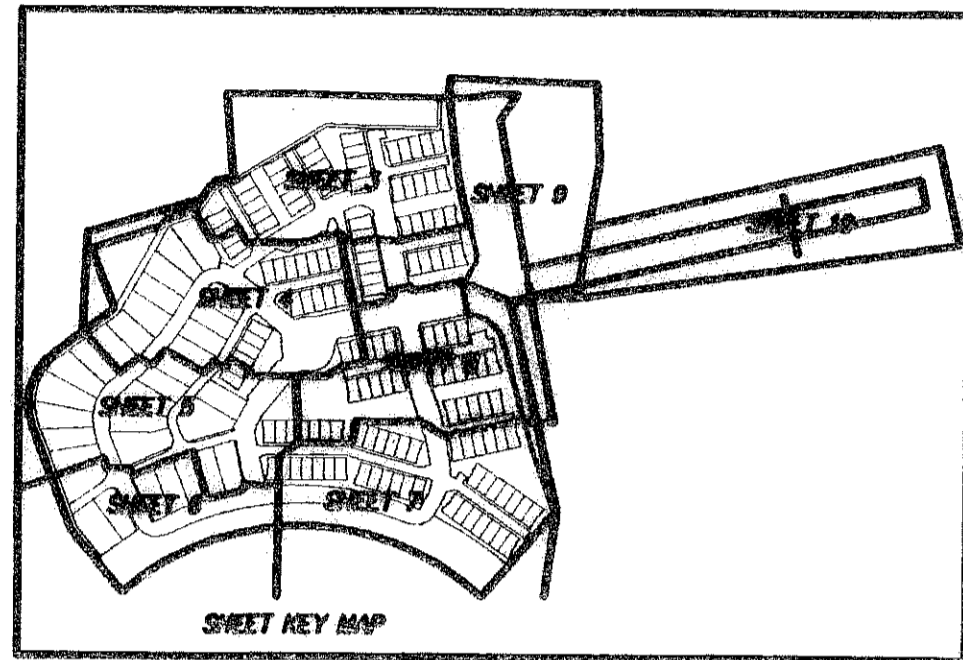
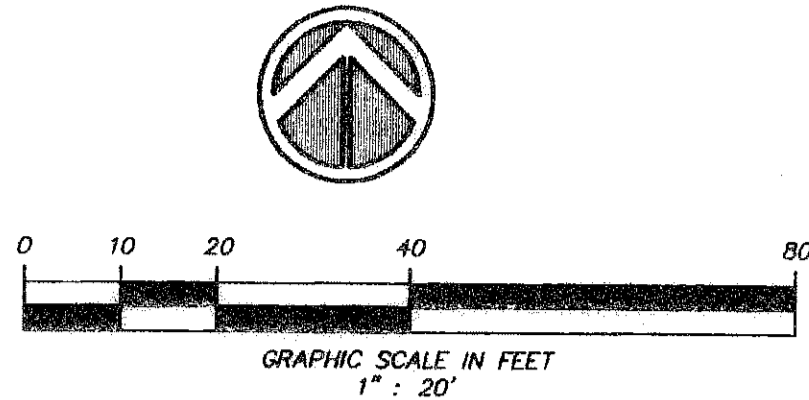
BLUE LAKE RESIDENTIAL

A REPLAT OF A PORTION OF PARCEL 2, BOCA TECHNOLOGY CENTER PLAT 1
RECORDED IN PLAT BOOK 96, PAGE 178, OF THE PUBLIC RECORDS OF PALM BEACH COUNTY, FLORIDA
LYING IN SECTION 12, TOWNSHIP 47 SOUTH, RANGE 42 EAST
CITY OF BOCA RATON, PALM BEACH COUNTY, FLORIDA.
(FEBRUARY, 2007)

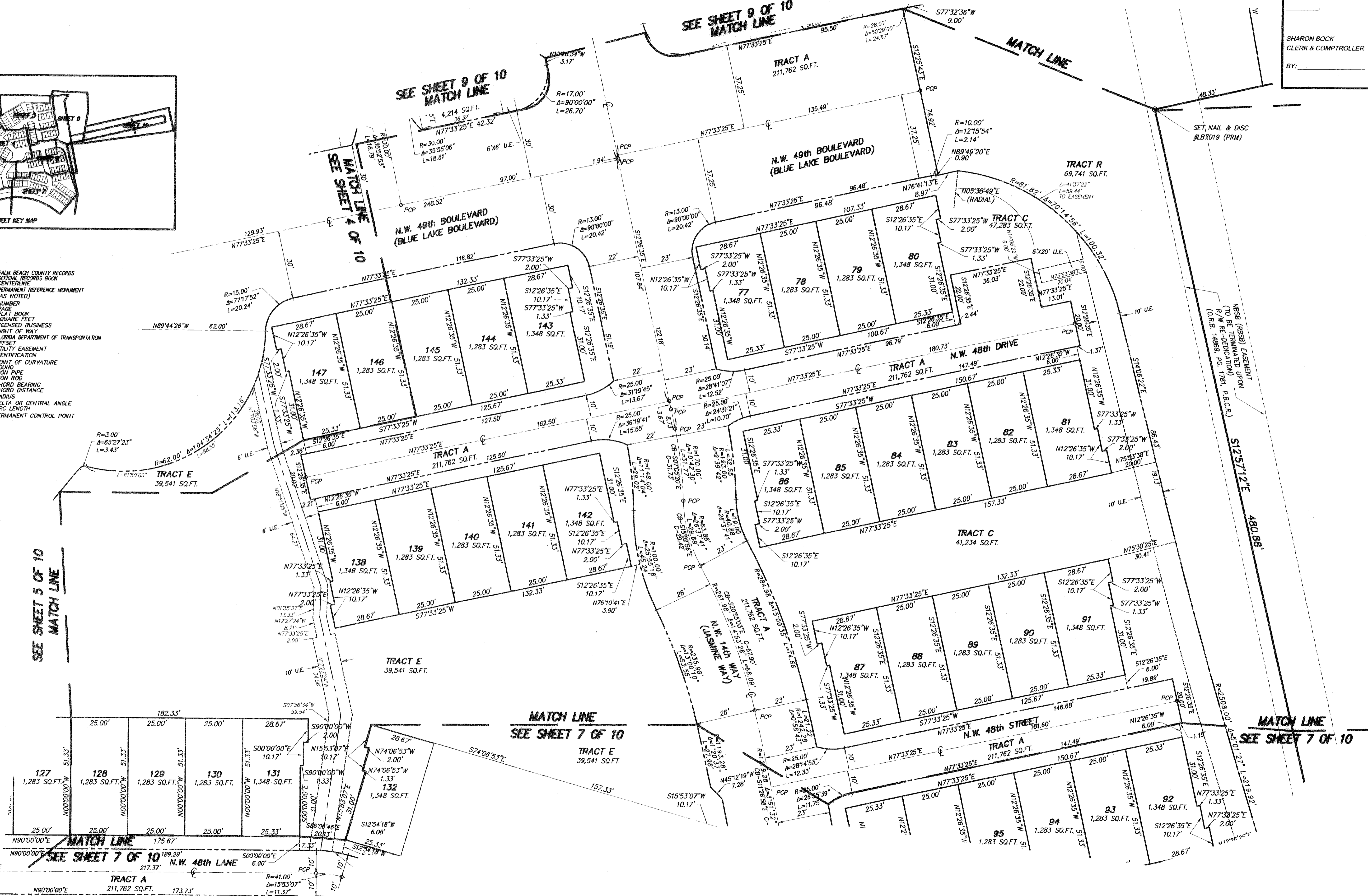
RECORD PLAT PREPARED BY:

TECH Sun-Tech Engineering, Inc.
Engineers - Planners - Surveyors
Certificate of Authorization Number LB 7019
1600 West Oakland Park Boulevard Ft. Lauderdale, FL 33311
E-Mail: suntech@suntech.com Phone (954) 777-3123 Fax (954) 777-3114

STATE OF FLORIDA
COUNTY OF PALM BEACH } SS
THIS PLAT WAS FILED FOR RECORD
AT _____ THIS _____
DAY OF _____, 2007, AND DULY
RECORDED IN PLAT BOOK _____
ON PAGES _____ THROUGH _____
SHARON BOCK
CLERK & COMPTROLLER
BY: _____



- LEGEND:**
- P.B.C.R. PALM BEACH COUNTY RECORDS
 - O.R.B. OFFICIAL RECORDS BOOK
 - C CENTERLINE
 - P.R.M. PERMANENT REFERENCE MONUMENT (AS NOTED)
 - N. NUMBER
 - P.G. PAGE
 - P.B. PLAT BOOK
 - S.F. SQUARE FEET
 - LB LICENSED BUSINESS
 - R/W RIGHT OF WAY
 - F.D.O.T. FLORIDA DEPARTMENT OF TRANSPORTATION
 - O/S OFFSET
 - U.E. UTILITY EASEMENT
 - I.D. IDENTIFICATION
 - P.C. POINT OF CURVATURE
 - F.D. FOUND
 - I.P. IRON PIPE
 - I.R. IRON ROD
 - CB CHORD BEARING
 - R RADIUS
 - Δ DELTA OR CENTRAL ANGLE
 - L ARC LENGTH
 - PCP PERMANENT CONTROL POINT



SEE SHEET 5 OF 10
MATCH LINE

SEE SHEET 9 OF 10
MATCH LINE

SEE SHEET 9 OF 10
MATCH LINE

MATCH LINE
SEE SHEET 7 OF 10

MATCH LINE
SEE SHEET 7 OF 10

MATCH LINE
SEE SHEET 7 OF 10