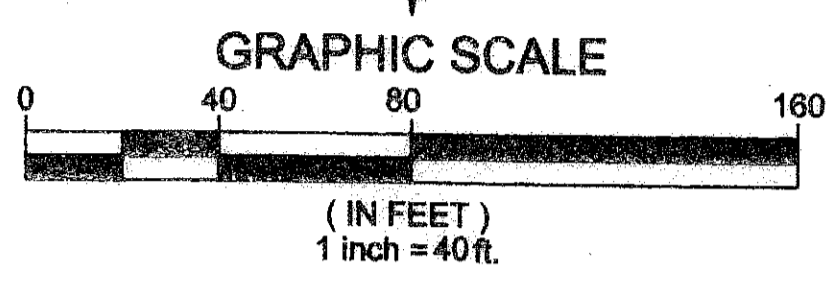
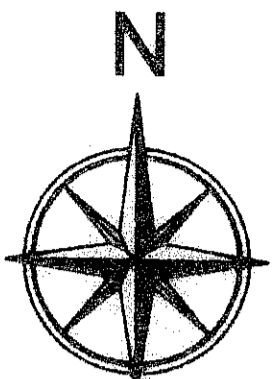
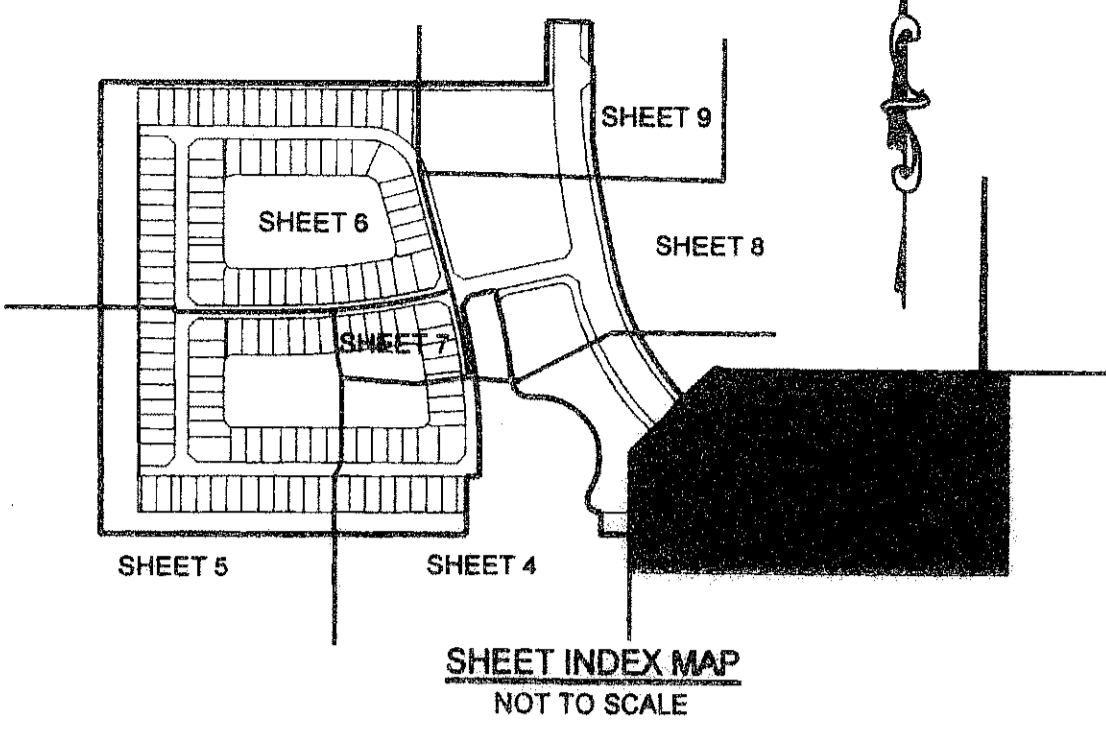


# MINI ASSEMBLAGE P.U.D. PLAT ONE

ALSO KNOWN AS GREYSTONE P.U.D.  
 BEING A REPLAT OF TRACTS 110 THROUGH 115 AND A PORTION OF TRACTS 85, 105, 108, 109,  
 116, 117, 118, 119, AND 120, BLOCK 55, PALM BEACH FARMS CO., PLAT NO. 3, PLAT BOOK 2,  
 PAGES 45 THROUGH 54, PUBLIC RECORDS OF PALM BEACH COUNTY FLORIDA, BEING IN  
 SECTION 28, TOWNSHIP 45 SOUTH, RANGE 42 EAST PALM BEACH COUNTY, STATE OF FLORIDA  
 AUGUST 2006 SHEET 3 OF 9

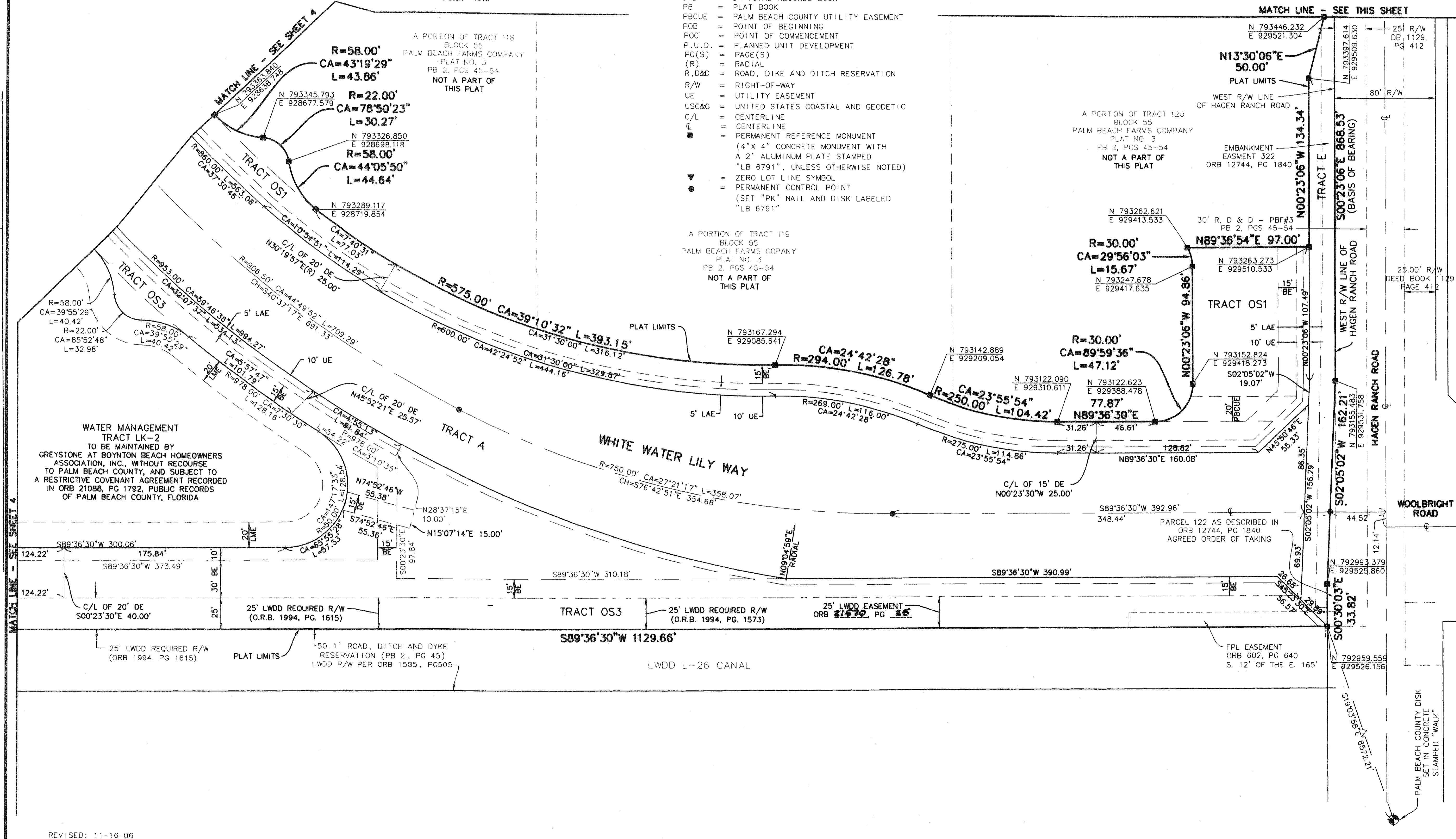
147



This Instrument Prepared By:  
 Kevin M. Beck, P.S.M.  
 Certificate of Authorisation No. LB 6791  
 AUGUST 2006

**CA** Calvin, Giordano & Associates, Inc.  
 Engineers Surveyors Planners  
 660 Village Boulevard, Suite 340  
 West Palm Beach, Florida 33409  
 Phone: 561.684.8161 Fax 561.684.8380

- LEGEND:**
- BE = BUFFER EASEMENT
  - CA = CENTRAL (DELTA) ANGLE
  - CH = CHORD
  - DB = DEED BOOK
  - DE = DRAINAGE EASEMENT
  - ESMT = EASEMENT
  - L = ARC LENGTH
  - LAE = LIMITED ACCESS EASEMENT
  - LMAE = LAKE MAINTENANCE ACCESS EASEMENT
  - LME = LAKE MAINTENANCE EASEMENT
  - LWDD = LAKE WORTH DRAINAGE DISTRICT
  - OE = OVERHANG EASEMENT
  - ORB = OFFICIAL RECORDS BOOK
  - PB = PLAT BOOK
  - PBCUE = PALM BEACH COUNTY UTILITY EASEMENT
  - POB = POINT OF BEGINNING
  - POC = POINT OF COMMENCEMENT
  - P.U.D. = PLANNED UNIT DEVELOPMENT
  - PG(S) = PAGE(S)
  - (R) = RADIAL
  - R,D&D = ROAD, DIKE AND DITCH RESERVATION
  - R/W = RIGHT-OF-WAY
  - UE = UTILITY EASEMENT
  - USC&G = UNITED STATES COASTAL AND GEODETIC
  - C/L = CENTERLINE
  - = PERMANENT REFERENCE MONUMENT (4" X 4" CONCRETE MONUMENT WITH A 2" ALUMINUM PLATE STAMPED "LB 6791", UNLESS OTHERWISE NOTED)
  - ▼ = ZERO LOT LINE SYMBOL
  - = PERMANENT CONTROL POINT (SET "PK" NAIL AND DISK LABELED "LB 6791")



SUPERVISOR: MINI ASSEMBLAGE P.U.D.  
 PAGE: 109  
 RECORD MAP: 185 A  
 ZONING: PUD  
 QUAD: 40  
 TAX: 978D  
 PUB NAME: 978D