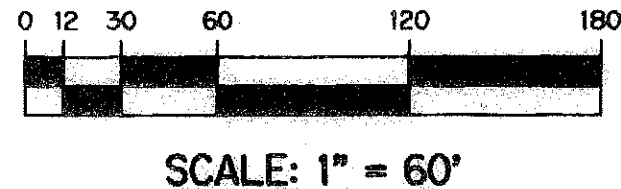
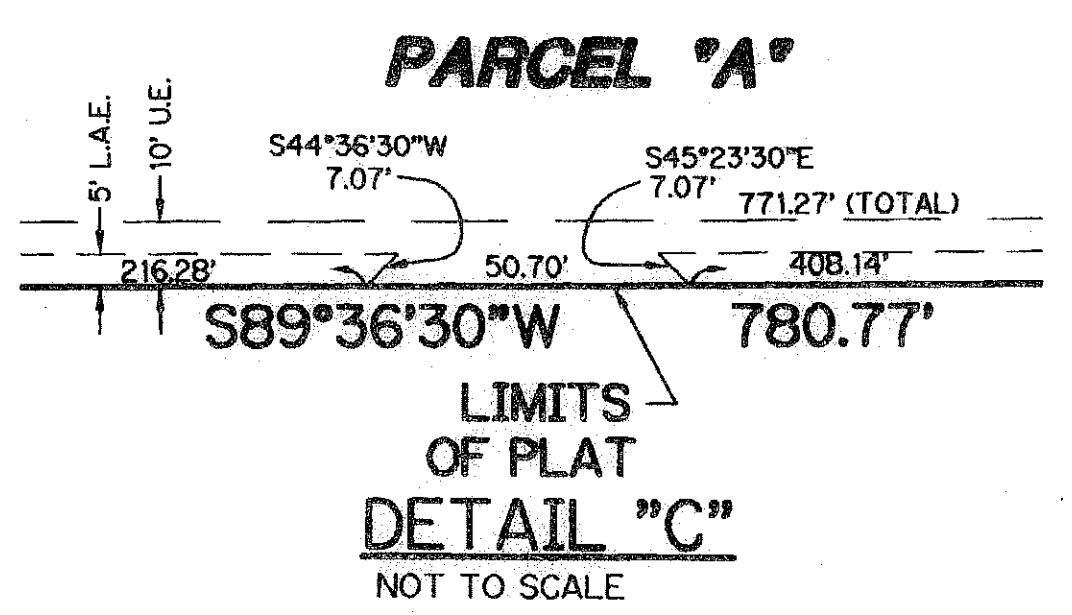
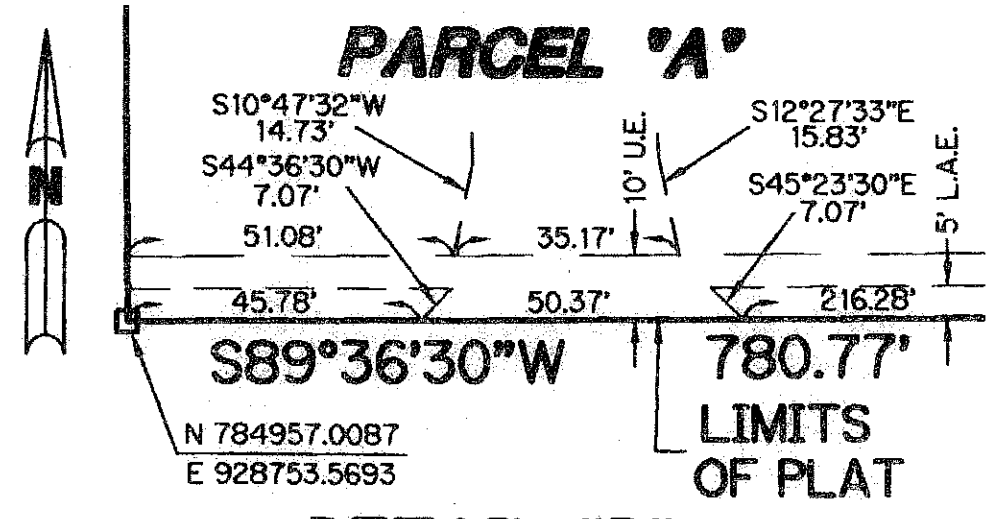
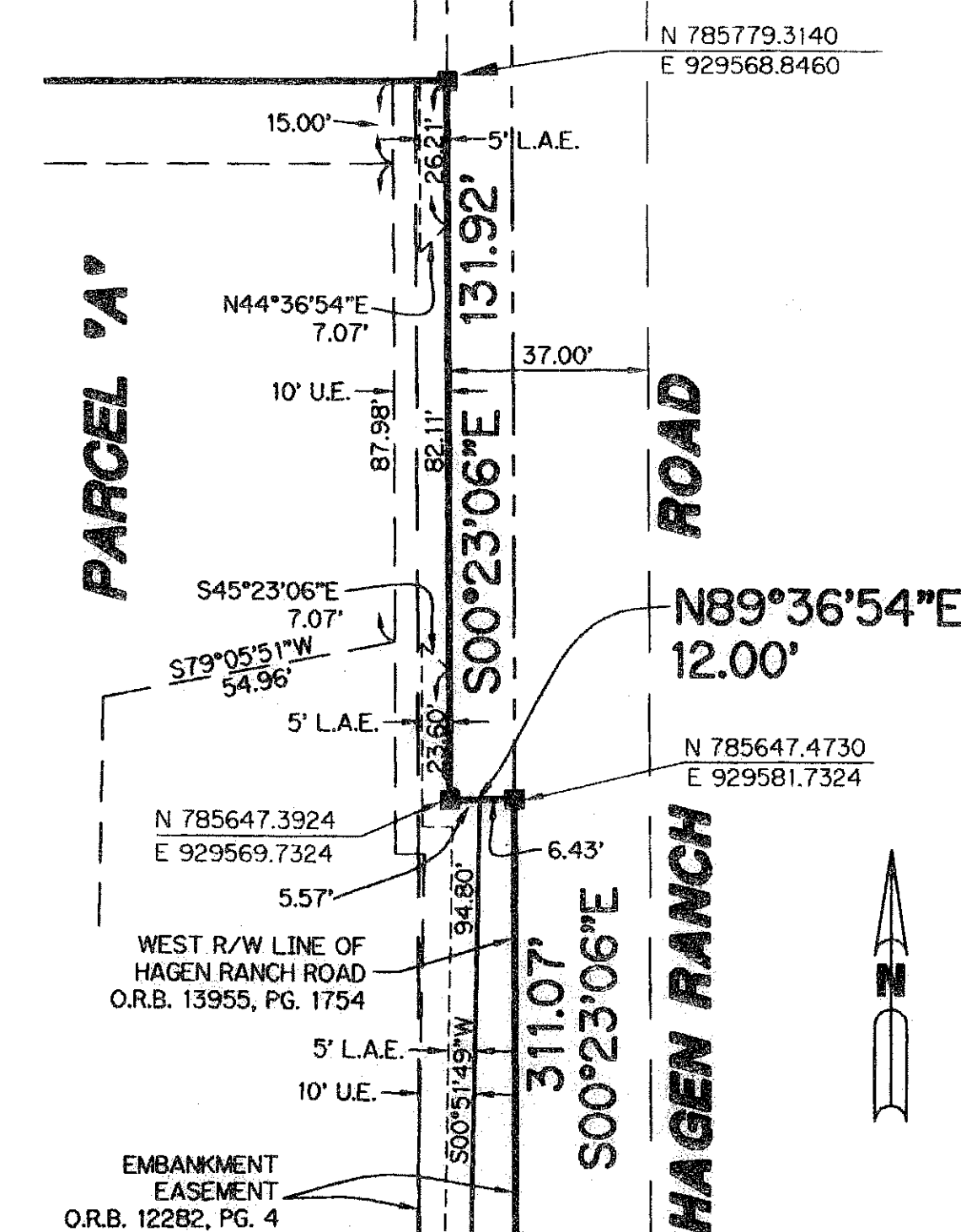
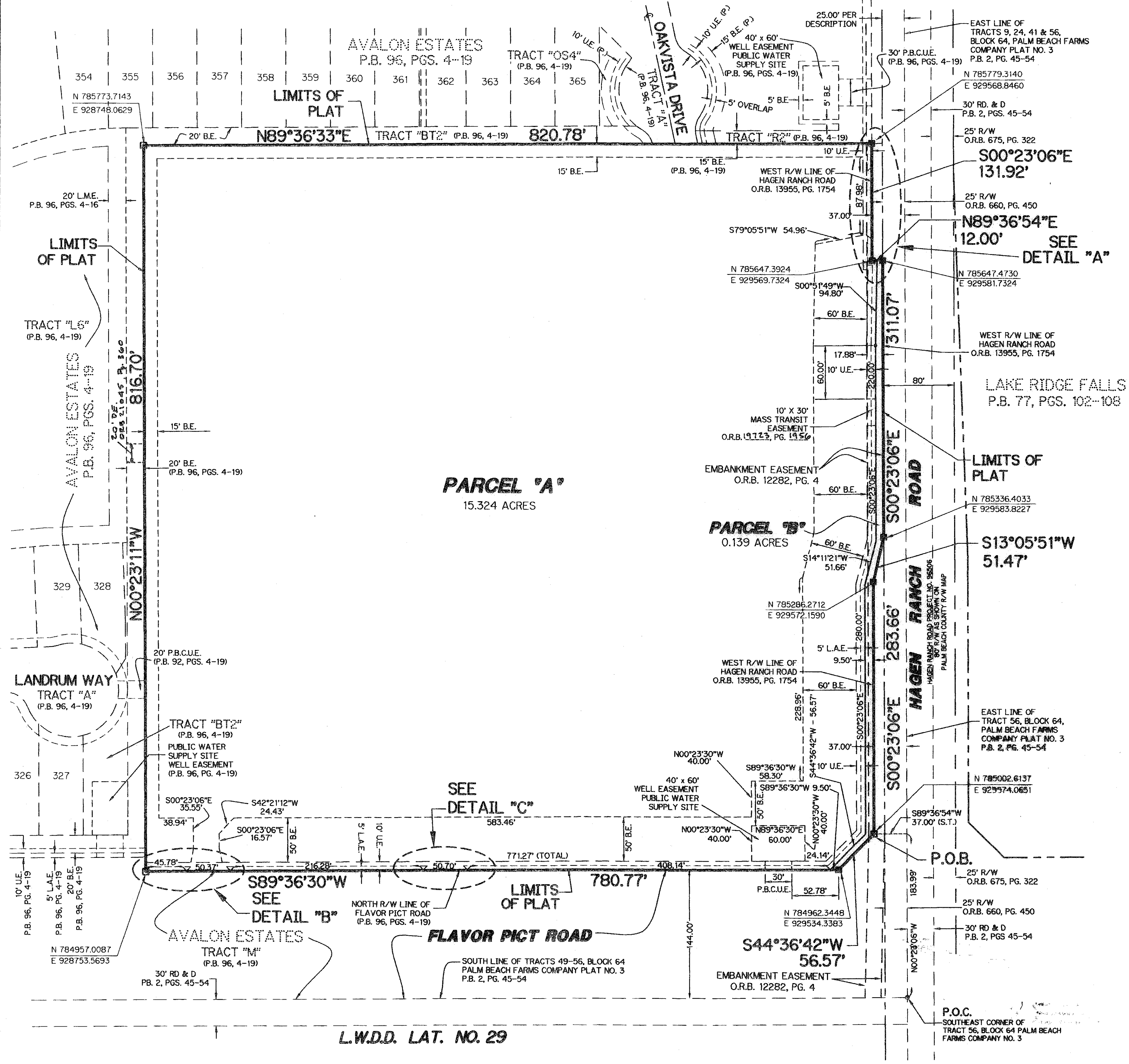


# WHITWORTH COMMERCIAL M.U.P.D.

BEING A REPLAT OF A PORTION OF TRACTS 41 THROUGH 43, INCLUSIVE AND THAT PORTION OF TRACTS 54 THROUGH 56, INCLUSIVE, BLOCK 64, PALM BEACH FARMS COMPANY PLAT NO. 3 AS RECORDED IN PLAT BOOK 2, PAGES 45 THROUGH 54, INCLUSIVE, OF THE PUBLIC RECORDS OF PALM BEACH COUNTY, FLORIDA, LYING WITHIN SECTION 4, TOWNSHIP 46 SOUTH, RANGE 42 EAST, PALM BEACH COUNTY, FLORIDA.

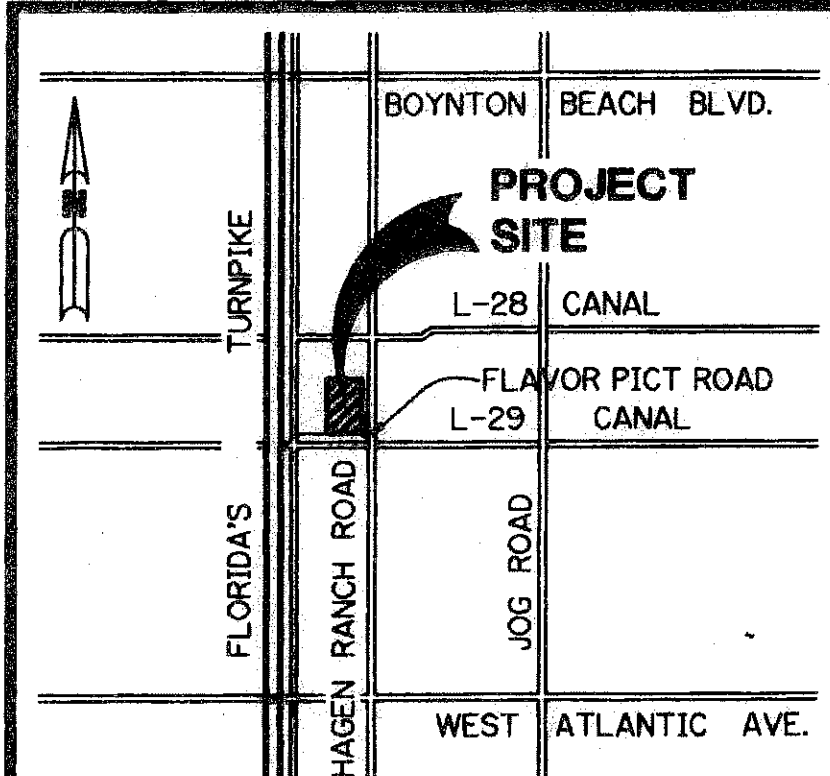
MARCH, 2005 SHEET 2 OF 2

155



**NOTE:**  
 COORDINATES SHOWN ARE GRID COORDINATES  
 DATUM = NAD 83 (1990 ADJUSTMENT)  
 ZONE = FLORIDA EAST ZONE  
 LINEAR UNIT = U.S. SURVEY FEET  
 COORDINATE SYSTEM 1983 STATE PLANE  
 TRANSVERSE MERCATOR PROJECTION  
 ALL DISTANCES ARE GROUND  
 SCALE FACTOR = 1.0000269  
 PLAT BEARING = GRID BEARING (NO ROTATION)

THIS INSTRUMENT PREPARED BY  
 WILBUR F. DIVINE, P.S.M. 4190, STATE OF FLORIDA  
 LAWSON, NOBLE AND WEBB, INC.  
 ENGINEERS PLANNERS SURVEYORS  
 420 COLUMBIA DRIVE  
 WEST PALM BEACH, FLORIDA 33409  
 LB-6674



LOCATION MAP N.T.S.

- LEGEND:**
- - SET PERMANENT REFERENCE MONUMENT, L.B. #6674
  - - FOUND PERMANENT REFERENCE MONUMENT, L.B. #6674
  - - CENTERLINE
  - - BUFFER EASEMENT
  - - LIMITED ACCESS EASEMENT
  - - NOT TO SCALE
  - O.R.B. - OFFICIAL RECORD BOOK
  - P.B. - PLAT BOOK
  - P.B.C.U.E. - PALM BEACH COUNTY UTILITY EASEMENT
  - PGS. - PAGES
  - P.S.M. - PROFESSIONAL SURVEYOR AND MAPPER
  - N.R. - NON-RADIAL
  - RAD. - RADIAL
  - R/W - RIGHT-OF-WAY
  - U.E. - UTILITY EASEMENT
  - S.T. - SURVEY TIE
  - P.O.B. - POINT OF BEGINNING
  - P.O.C. - POINT OF COMMENCEMENT
  - N 737648.0171 E 905256.2326 - DENOTES STATE PLANE COORDINATES

REVISIONS  
 DATE  
 BY  
 CHECKED  
 APPROVED  
 TITLE

L.W.D.D. LAT. NO. 29