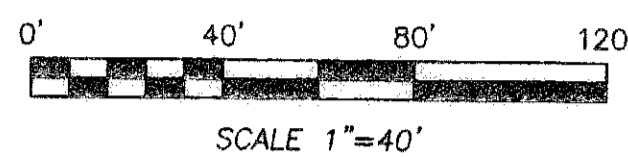
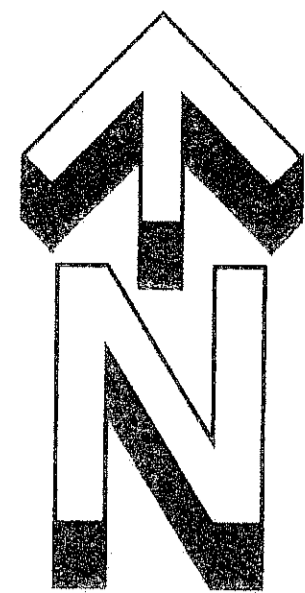


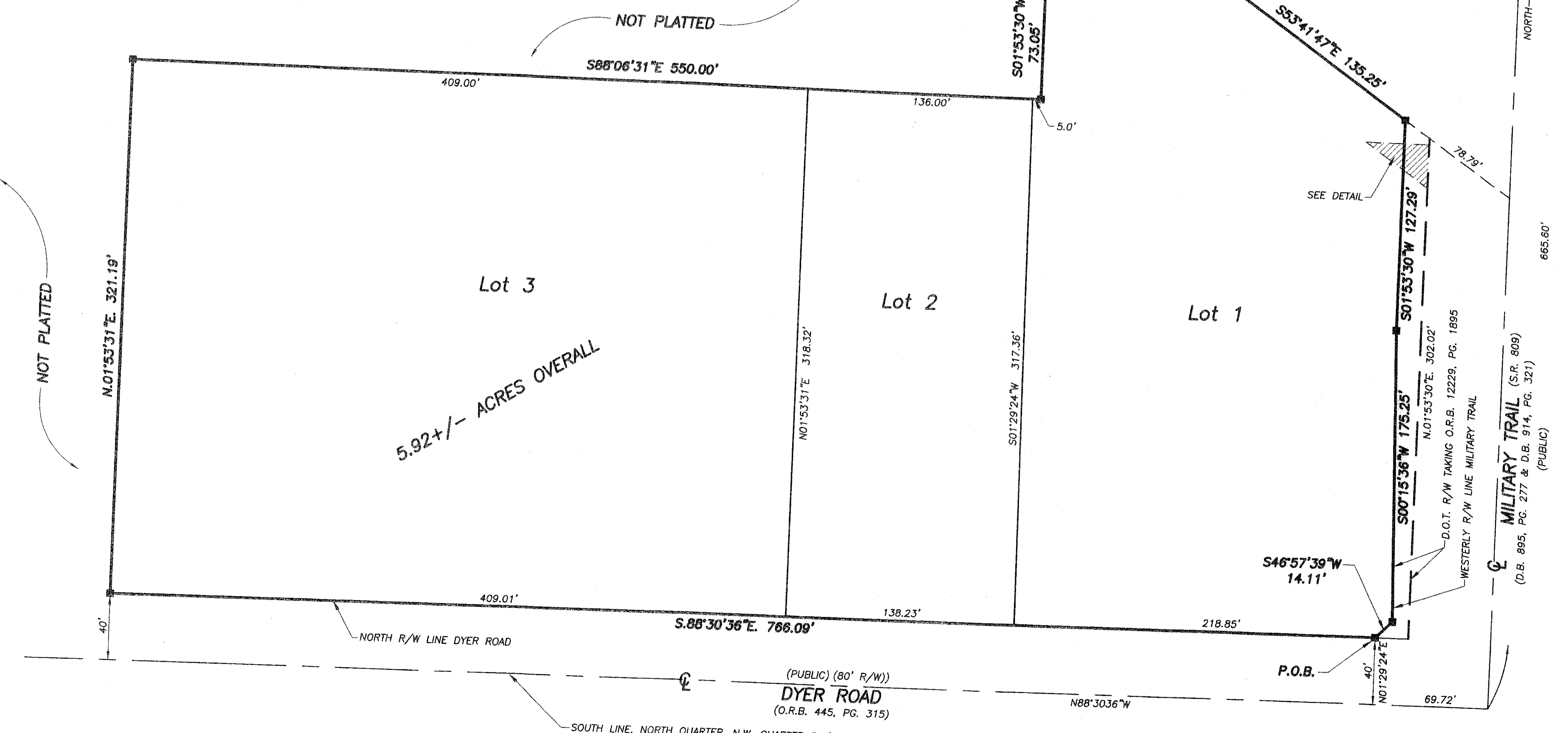
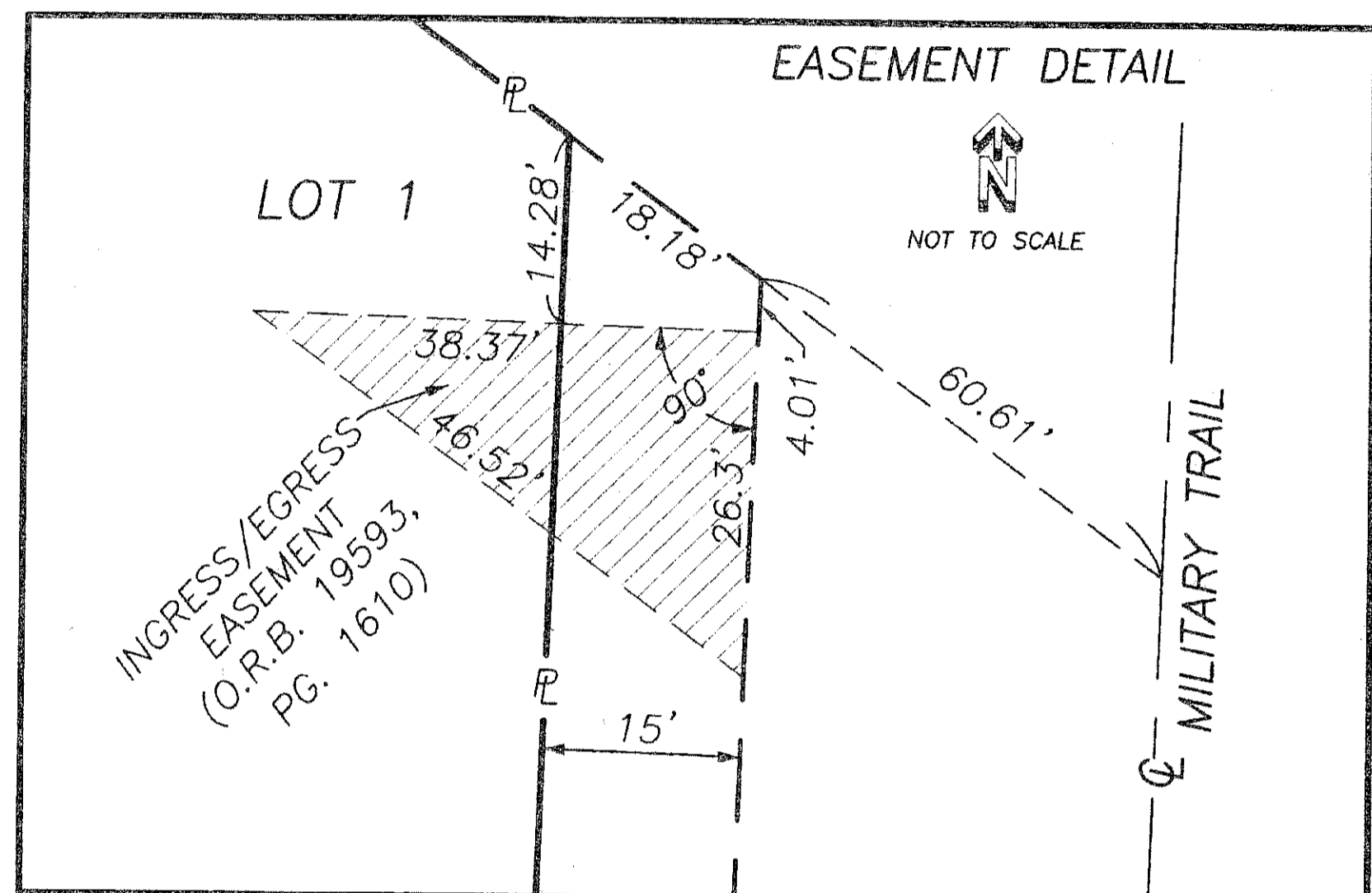
163

DYER ROAD PROPERTIES

BEING A PORTION OF THE NORTH ONE-QUARTER (N 1/4) OF THE NORTHWEST ONE-QUARTER (NW 1/4)
OF SECTION 36, TOWNSHIP 42 SOUTH, RANGE 42 EAST, CITY OF RIVIERA BEACH,
PALM BEACH COUNTY, FLORIDA
JULY, 2006



SHEET 2 OF 2



- ABBREVIATIONS AND SYMBOLS
- 1. =Denotes Set Permanent Reference Monuments (P.R.M.'s). Stamped P.R.M. L.S. # 3357.
 - 2. =Denotes Permanent Control Point
 - 3. =Centerline.
 - 4. R/W =Right of Way
 - 5. P.B. =Plat Book.
 - 6. P.G.(S) =Pages.
 - 7. SEC. =Section.
 - 8. TWP. =Township.
 - 9. RGE. =Range.
 - 10. U.E. =Utility Easement.
 - 11. D.E. =Drainage Easement.
 - 12. D.B. =Deed Book
 - 13. A =Arc Length.
 - 14. Δ =Central Angle.
 - 15. R =Radius.
 - 16. C.B. =Chord Bearing.
 - 17. O.R.B. =Official Record Book.
 - 18. R.P.B. =Road Plat Book.
 - 19. L.A.E. =Limited Access Easement.
 - 20. P.O.C. =Point of Commencement.
 - 21. P.O.B. =Point of Beginning.
 - 22. P.B.C. =Palm Beach County.
 - 23. P.B.C.U.E. =Palm Beach County Utility Easement
 - 24. P.C.P. =Permanent Control Points.
 - 25. F.N.D. =Found.
 - 26. ESM'T =Easement
 - 27. W'ly =Westerly
 - 28. F.P.L. =Florida Power and Light
 - 29. S.S.E. =Safe Sight Easement
 - 30. N =Nothing
 - 31. E =Easting
 - 32. S =Survey
 - 33. D =Deed
 - 34. (R) =Radial lot line

DYER ROAD PROPERTIES

WALLACE SURVYING
CORP., LICENSED BUSINESS # 4849
5555 VILLAGE BOULEVARD, WEST PALM BEACH, FLORIDA 33407 • (561) 840-6551

FIELD:	JOB NO.: 02-1120H	P.B.:	PG.
OFFICE: K.S.	DATE: JULY, 2006	DWG. NO.:	02-1120-2
CHK'D: C.W.	REF: 02-1120-2.DWG	SHEET:	2 OF 2