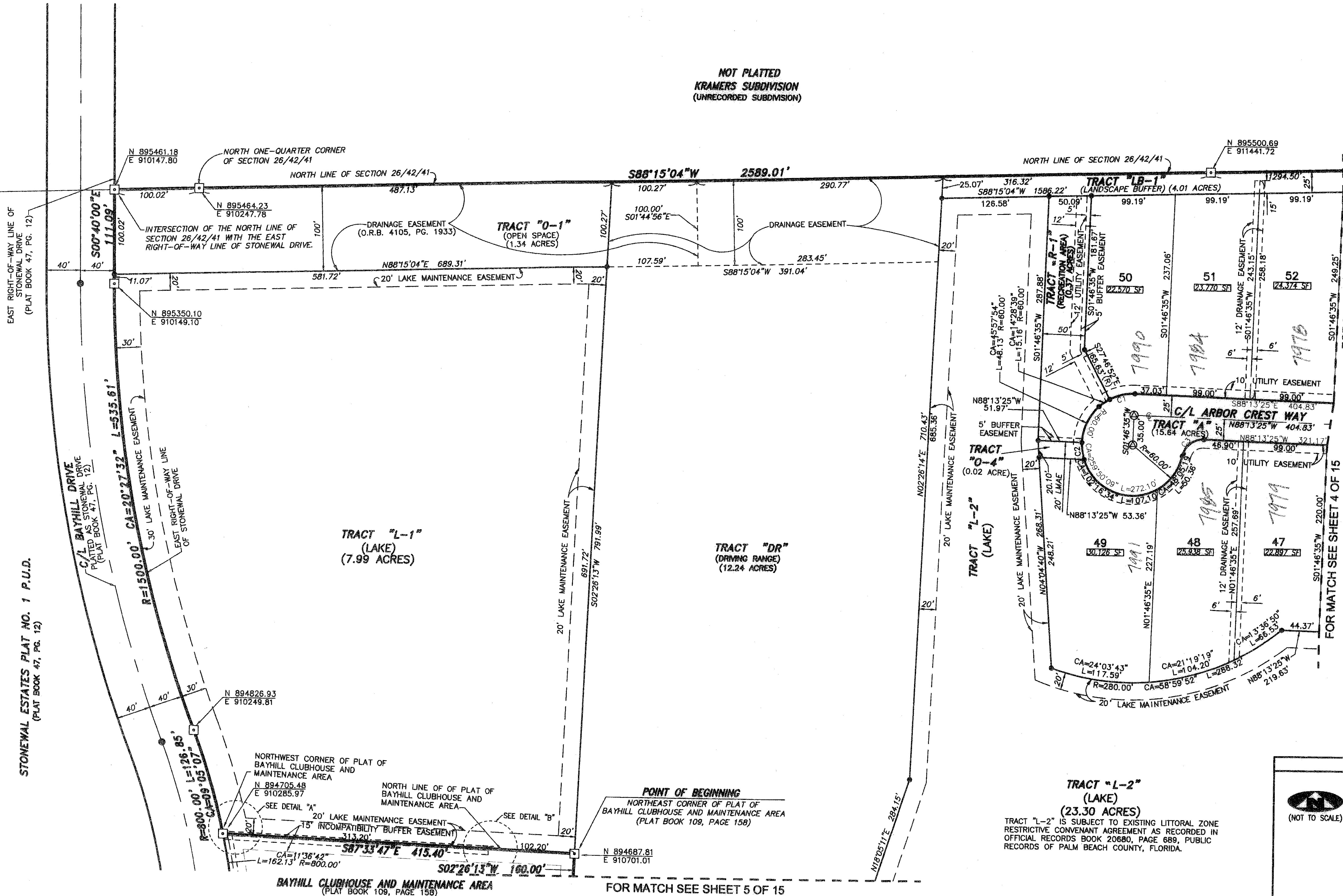


BAYHILL ESTATES P.U.D.

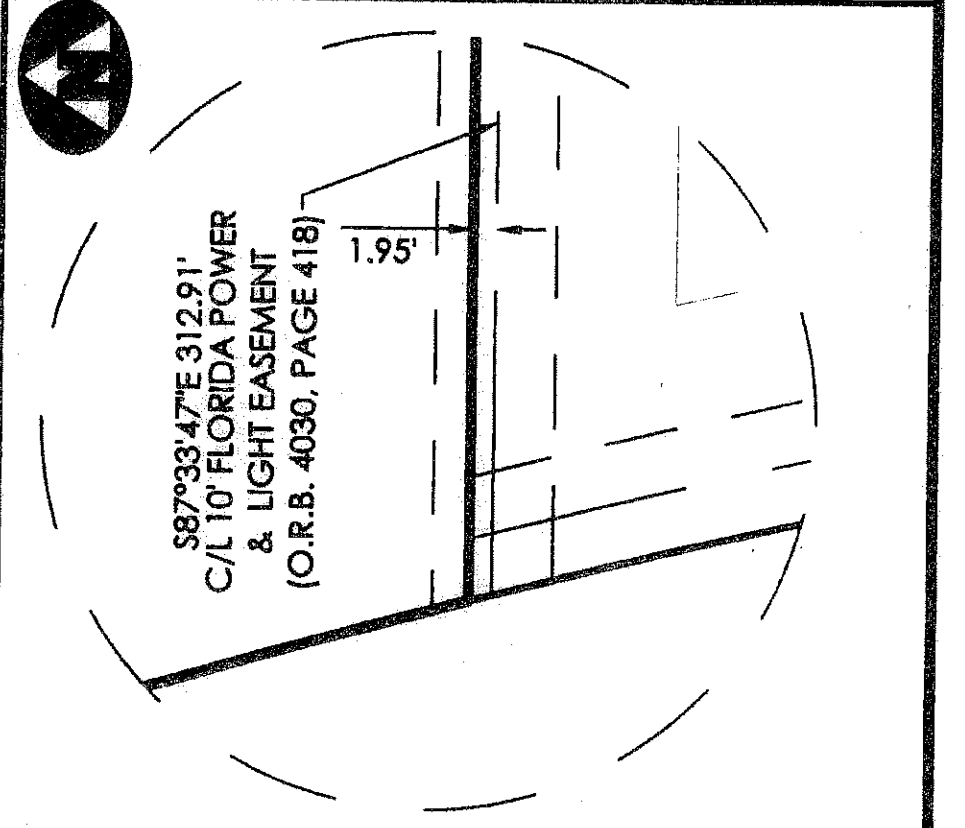
(A PART OF STONEWAL ESTATES PLANNED UNIT DEVELOPMENT)
 BEING A REPLAT OF TRACT "ER", BAYHILL CLUBHOUSE AND MAINTENANCE AREA, RECORDED IN PLAT BOOK 109, PAGE 158, PUBLIC RECORDS, PALM BEACH COUNTY AND LYING AND BEING IN SECTION 26, TOWNSHIP 42 SOUTH, RANGE 41 EAST, PALM BEACH COUNTY, FLORIDA.
 A PORTION OF

18

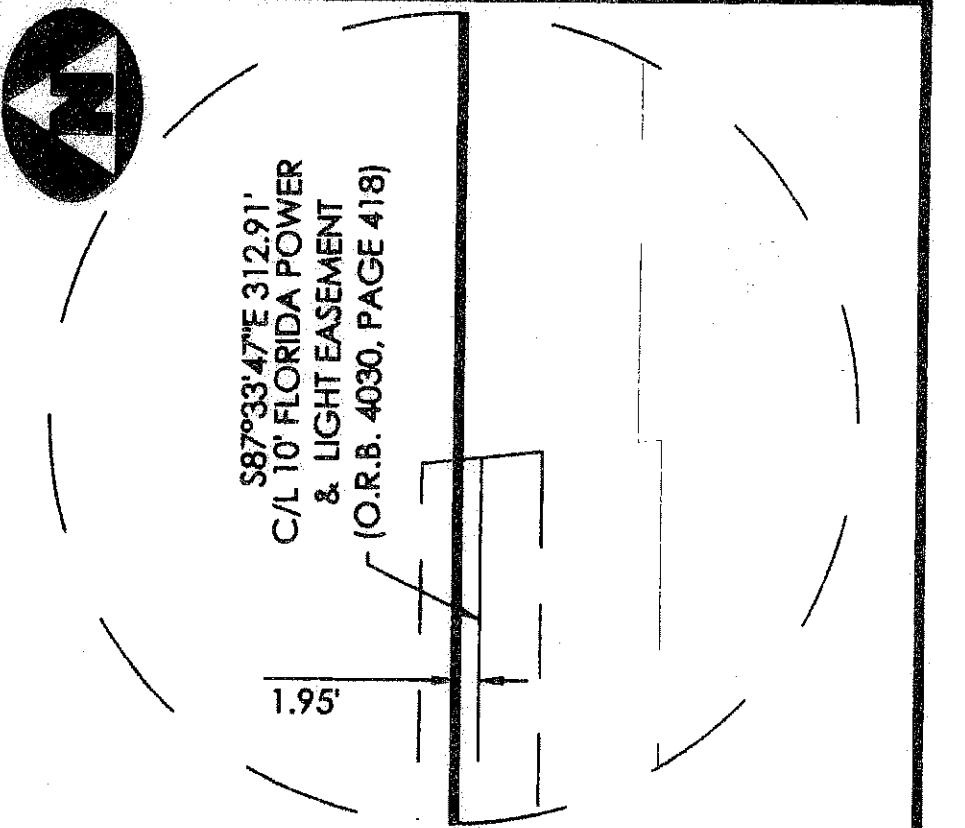
NOT PLATTED
 KRAMERS SUBDIVISION
 (UNRECORDED SUBDIVISION)



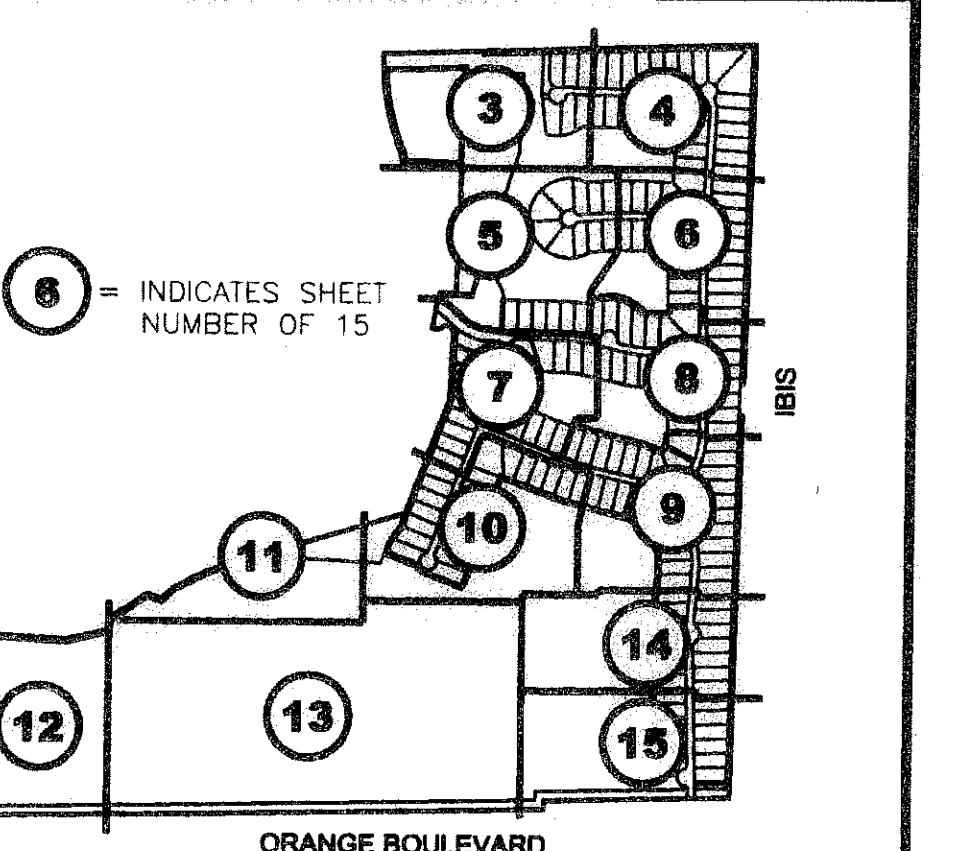
DETAIL "A" (NOT TO SCALE)



DETAIL "B" (NOT TO SCALE)



SHEET INDEX



CURVE TABLE					
CURVE	RADIUS	CENTRAL ANGLE	LENGTH	CHORD DISTANCE	CHORD BEARING
C1	60.00'	29°33'27"	30.95'	30.61'	S76°59'51"W
C2	60.00'	19°28'16"	20.39'	20.29'	S07°57'33"E
C3	25.00'	79°50'09"	34.83'	32.08'	S51°51'30"W

SURVEYOR'S NOTES

- THE BASE BEARING, AS SHOWN HEREON, IS N01°23'58"E ALONG THE EAST LINE OF SECTION 26/42/41.
- IN THOSE INSTANCES WHERE UTILITY OR DRAINAGE STRUCTURES ARE CONSTRUCTED IN CONFLICT WITH THE PLATTED PERMANENT CONTROL POINT STATIONERS MONUMENTED AS PERMANENT CONTROL POINTS WILL BE SET TO REFERENCE THE PLATTED POSITION.
- POINTS THAT INTERSECT CURVES ARE NOT RADIAL UNLESS OTHERWISE NOTED.
- THIS INSTRUMENT WAS PREPARED BY WM. R. VAN CAMPEN, P.S.M. NO. 2424, IN AND FOR THE OFFICES OF ASSOCIATED LAND SURVEYOR'S, INC., 4152 WEST BLUE HERON BOULEVARD, SUITE 121, RIVIERA BEACH, FLORIDA, 33407.
- THE COORDINATES SHOWN HEREON ARE STATE PLANE GRID COORDINATES ACCORDING TO THE TRANSVERSE MERCATOR PROJECTION OF THE FLORIDA EAST ZONE, N.A.D. 1983, PER THE 1990 ADJUSTMENT.
- THE GROUND DISTANCE TO GRID DISTANCE SCALE FACTOR IS 1.000015 (GROUND DISTANCE X SCALE FACTOR = GRID DISTANCE)
- THE LINEAR DIMENSIONS SHOWN HEREON ARE GROUND DISTANCES IN U.S. FEET AND DECIMAL PARTS THEREOF.
- THE BEARINGS SHOWN HEREON ARE BASED ON STATE PLANE GRID AZIMUTHS

LEGEND

- (R) DENOTES A RADIAL LINE
- C/L DENOTES A CENTERLINE
- DE DENOTES DRAINAGE EASEMENT
- WE DENOTES WATER LINE EASEMENT
- LS DENOTES LIFT STATION EASEMENT
- PG DENOTES PAGE
- BE DENOTES BUFFER EASEMENT
- LAE DENOTES LAKE MAINTENANCE ACCESS EASEMENT
- R DENOTES RADIAL DISTANCE
- L DENOTES ARC LENGTH DISTANCE
- CA DENOTES CENTRAL ANGLE
- LCB DENOTES LONG CHORD BEARING
- CHD DENOTES CHORD DISTANCE
- ORB DENOTES OFFICIAL RECORDS BOOK
- RWBE DENOTES RIGHTS-OF-WAY BUFFER EASEMENT
- N = 123456789 DENOTES A NORTHING AND EASTING COORDINATE
- E = 123456789 DENOTES A FOUND PERMANENT REFERENCE MONUMENT (L.B. 4133)
- DENOTES A FOUND PERMANENT REFERENCE MONUMENT (L.B. 7344)
- DENOTES A FOUND PERMANENT CONTROL POINT
- DENOTES A SET PERMANENT REFERENCE MONUMENT (L.B. 7344)
- DENOTES A SET PERMANENT CONTROL POINT (L.B. 7344)

FILE: P87PLAT
 FB: WO.NO.: P87
 SCALE: 1"= 60'
 DATE: 2/01/05
 DWN: EB
 SHEET 3 OF 15

RECORD PLAT OF BAYHILL ESTATES PUD

ASSOCIATED LAND SURVEYORS, INC.
 4152 W. BLUE HERON BOULEVARD—SUITE 121
 RIVIERA BEACH FLORIDA 33404 LB NO. 7344
 PHONE: (561) 848-2102 FAX: (561) 844-9659 EMAIL: ALLSURVEY@AOL.COM

SURVEYOR: Bay Hill, East
 BOOK: 110
 FLOOD ZONE: B
 ZONING: REE
 CHAD: # 54
 ZIP CODE: 33412
 TAG: 0418
 PLO NAME: Stonewal, East