

SEE SHEET 8 OF 12 MATCHLINE

MATCHLINE SEE SHEET 8 OF 12

MATCHLINE SEE SHEET 8 OF 12

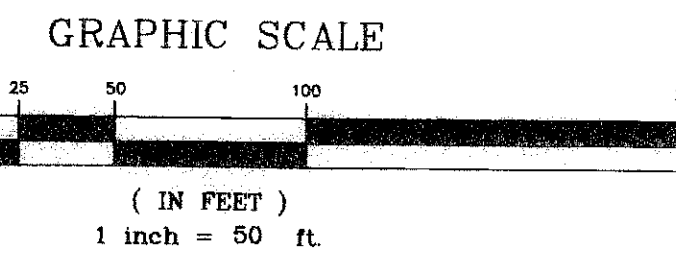
SEE SHEET 5 OF 12 MATCHLINE

MATCHLINE SEE SHEET 6 OF 12

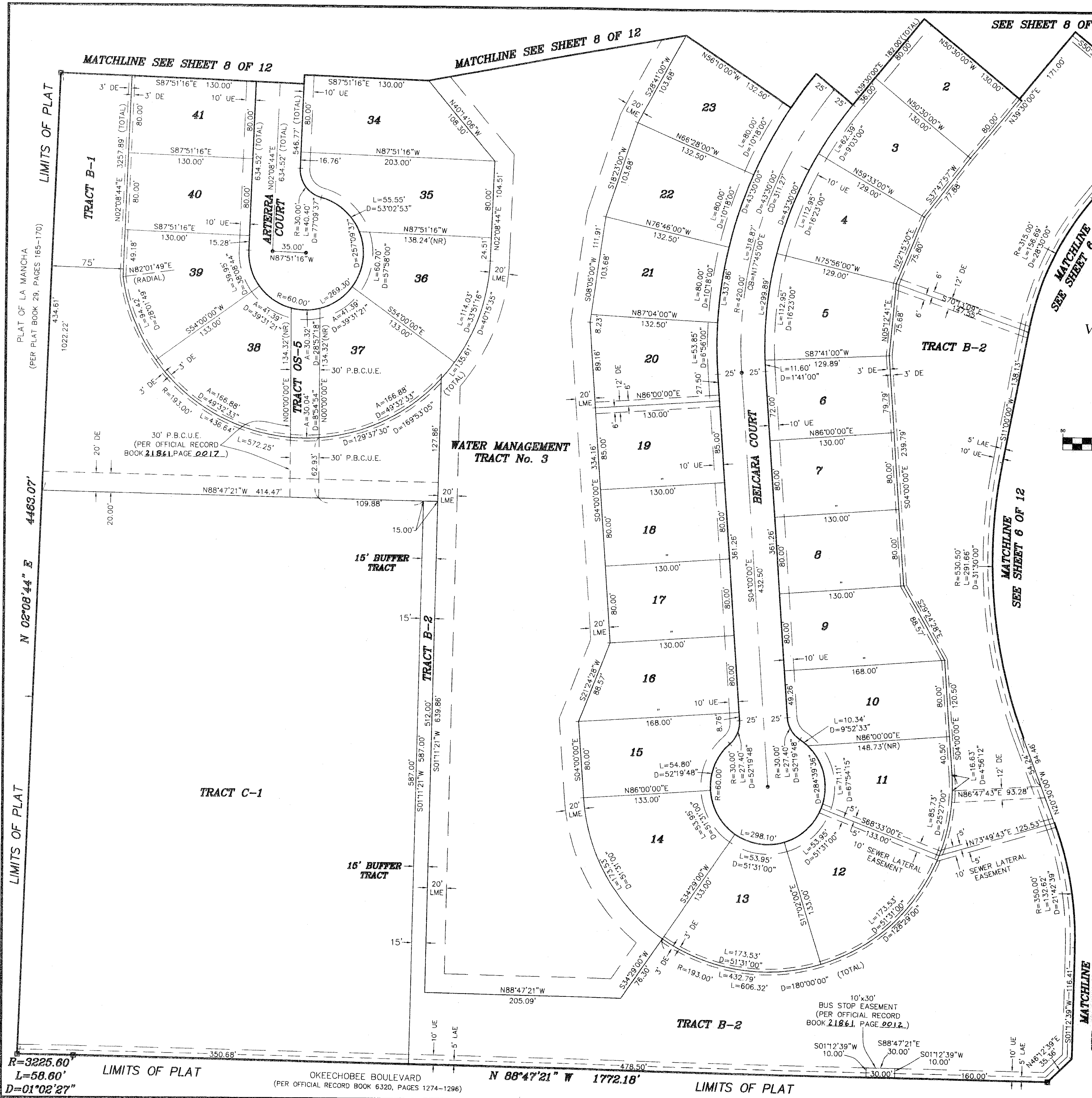
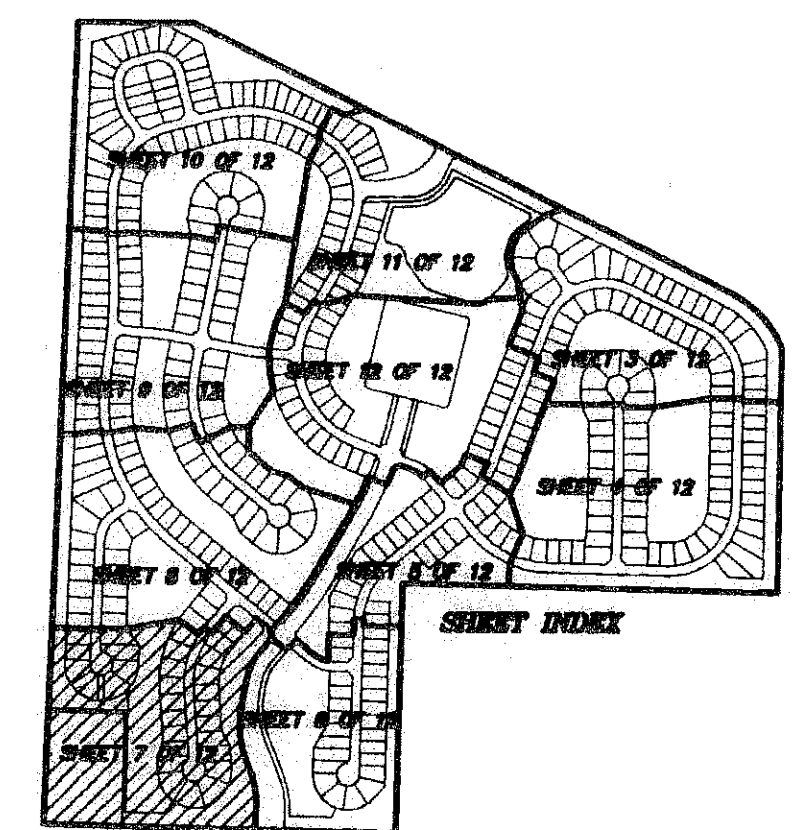
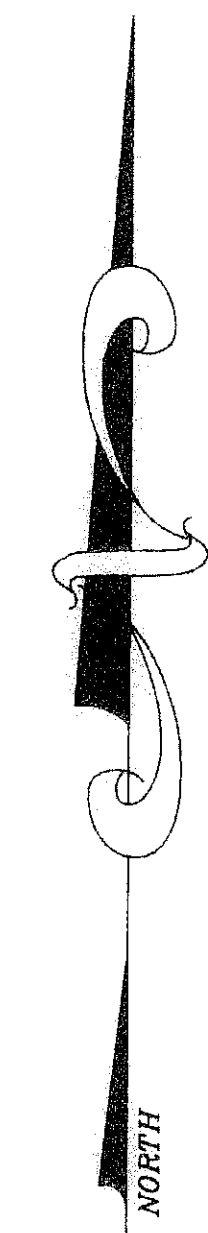
MATCHLINE SEE SHEET 6 OF 12

PORTOSOL

IN SECTIONS 13 AND 24, TOWNSHIP 43 SOUTH, RANGE 41 EAST,
VILLAGE OF ROYAL PALM BEACH, PALM BEACH COUNTY, FLORIDA
MAY 2007
SHEET 7 OF 12



- LEGEND:**
D= DELTA (CENTRAL ANGLE)
L= LENGTH
R= RADIUS
CB= CHORD BEARING
CD= CHORD DISTANCE
PSM= PROFESSIONAL SURVEYOR AND MAPPER
PLS= PROFESSIONAL LAND SURVEYOR
LAE= LIMITED ACCESS EASEMENT
MRES= MAINTENANCE ROOF AND EAVES EASEMENT
UE= UTILITY EASEMENT
DE= DRAINAGE EASEMENT
OS= OPEN SPACE
WMT= WATER MANAGEMENT TRACT
(R)= RADIAL
(NR)= NON-RADIAL
PG= PAGE
ORB= OFFICIAL RECORD BOOK
P.B.C.U.E.= PALM BEACH COUNTY UTILITY EASEMENT
PM= PERMANENT REFERENCE MONUMENT "LB 4318"
(UNLESS OTHERWISE NOTED)
●= PERMANENT CONTROL POINT "LB 4318"



R=3225.60
L=58.60
D=01°02'27"

OKEECHOBEE BOULEVARD
(PER OFFICIAL RECORD BOOK 6320, PAGES 1274-1296)

N 88°47'21" W 1772.18'

LIMITS OF PLAT

PORTOSOL

NMI
NICK MILLER, INC.
2560 RCA BLVD, STE 105, PALM BEACH GARDENS, FL 33410
TEL: 561.627.5200 FAX: 561.627.0983 www.nickmillerinc.com
D.B.P.R. BUSINESS LICENSE NO. 4318

SHEET NO.	SCALE: 1" = 50'
7 OF 12	DATE: MAY 2007
	JOB NO. 1038.004
	FILE: 1038.004.DWG