

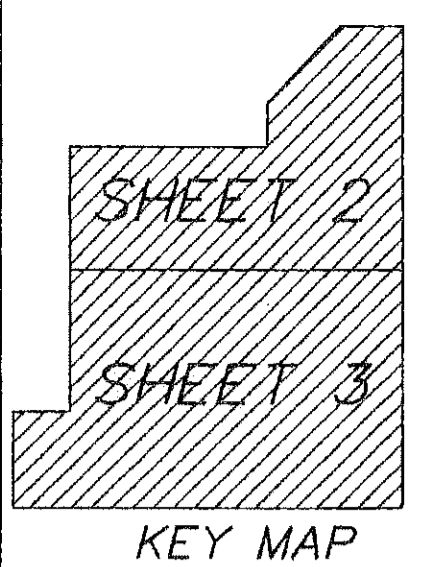
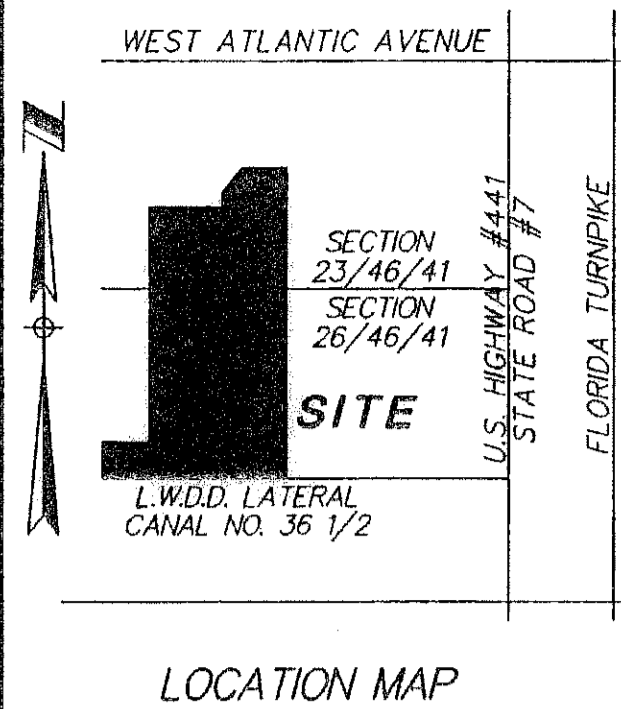
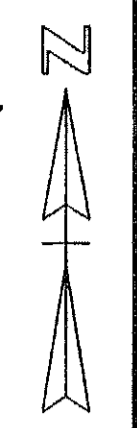
ASCOT-LYONS & ATLANTIC PUD PRESERVE PARCEL 4

PETITION NO. PDD 2004-369 (ASCOT - LYONS & ATLANTIC PUD)

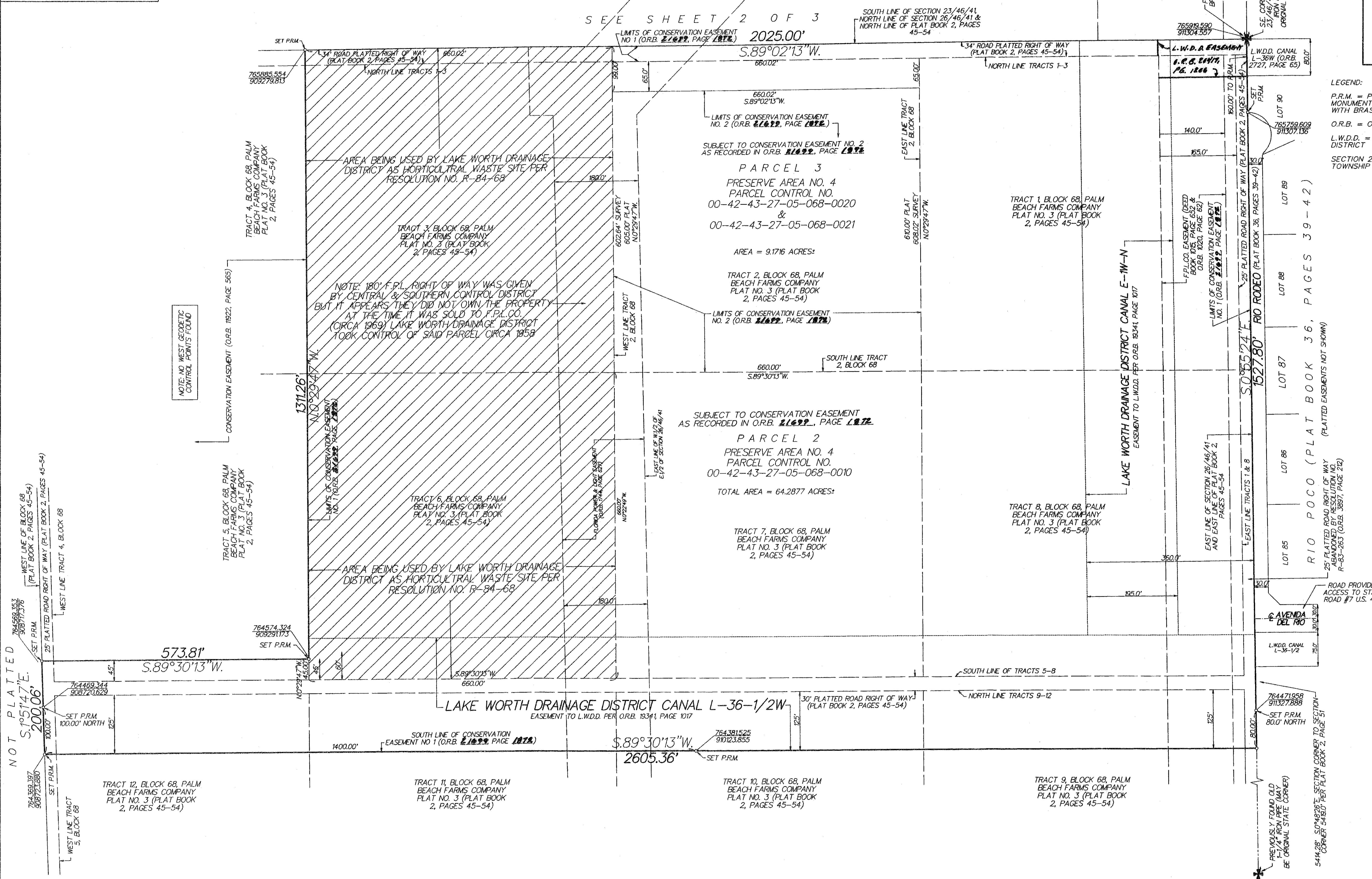
BEING A REPLAT OF A PORTION OF BLOCK 68, PALM BEACH FARMS COMPANY PLAT NO. 3 (PLAT BOOK 2, PAGES 45-54) AND A PORTION OF SECTION 23, TOWNSHIP 46 SOUTH, RANGE 41 EAST, PALM BEACH COUNTY, FLORIDA

SHEET 3 OF 3
JULY 2005

SCALE: 1" = 100'



SEE SHEET 2 OF 3



LEGEND:
P.R.M. = PERMANENT REFERENCE MONUMENT (4" X 4" CONCRETE MONUMENT WITH BRASS CAP)
O.R.B. = OFFICIAL RECORD BOOK
L.W.D.D. = LAKE WORTH DRAINAGE DISTRICT
SECTION 23/46/41 = SECTION 23, TOWNSHIP 46 SOUTH, RANGE 41 EAST

NOTE: EAST SET OF GEODETIC CONTROL POINTS ARE PALM BEACH COUNTY BRASS DISKS AT THE NORTHEAST AND SOUTHWEST CORNERS OF S.0-42-35 E. AND A GROUND SOUTH RANGE 41 EAST WITH BRASS BEARING OF S.0-42-35 E. AND A GROUND DISTANCE OF 5355.61'

REVISION Ascot-Lyons & Atlantic PUD Preserve Parcel 4
BLOCK 10 PAGE 51 REVISION MAP # 100 to
FLOOD ZONE AD ZONING AD 20
SB ZIP CODE 33446
TAX 1022
PUD NAME

NOT PLATTED
S.05147 E.
200.06'

764569.397
908723.680
SET P.R.M.

764469.344
908720.629
SET P.R.M.

764574.324
908291.173
SET P.R.M.

764589.554
909279.813
SET P.R.M.

764381.525
91023.855
SET P.R.M.

764471.958
911327.888
SET P.R.M.

765919.590
91304.537
SET P.R.M.

765759.609
911307.136
SET P.R.M.

764471.958
911327.888
SET P.R.M.

764471.958
911327.888
SET P.R.M.

764471.958
911327.888
SET P.R.M.

764471.958
911327.888
SET P.R.M.

764471.958
911327.888
SET P.R.M.

764471.958
911327.888
SET P.R.M.

764471.958
911327.888
SET P.R.M.

764471.958
911327.888
SET P.R.M.

764471.958
911327.888
SET P.R.M.

764471.958
911327.888
SET P.R.M.

764471.958
911327.888
SET P.R.M.

764471.958
911327.888
SET P.R.M.

764471.958
911327.888
SET P.R.M.

764471.958
911327.888
SET P.R.M.

764471.958
911327.888
SET P.R.M.

764471.958
911327.888
SET P.R.M.

764471.958
911327.888
SET P.R.M.

764471.958
911327.888
SET P.R.M.

764471.958
911327.888
SET P.R.M.

764471.958
911327.888
SET P.R.M.

764471.958
911327.888
SET P.R.M.

764471.958
911327.888
SET P.R.M.