

I, SHARON R. BOCK, CLERK & COMPTROLLER OF THE CIRCUIT COURT OF PALM BEACH COUNTY, FLORIDA, HEREBY CERTIFY THAT THIS PLAT WAS FILED FOR RECORD IN PLAT BOOK _____ PALM BEACH COUNTY, FLORIDA, PUBLIC RECORDS, THIS _____ DAY OF _____ 2007.
SHARON R. BOCK, CLERK & COMPTROLLER OF THE CIRCUIT COURT, PALM BEACH COUNTY, FLORIDA
BY: _____
DEPUTY CLERK

A BOUNDARY PLAT OF TRINITY UNITED METHODIST CHURCH OF PALM BEACH GARDENS

LYING IN SECTION 13, TOWNSHIP 42 SOUTH, RANGE 42 EAST, WITHIN
THE CITY OF PALM BEACH GARDENS, PALM BEACH COUNTY, FLORIDA

MAY 2007

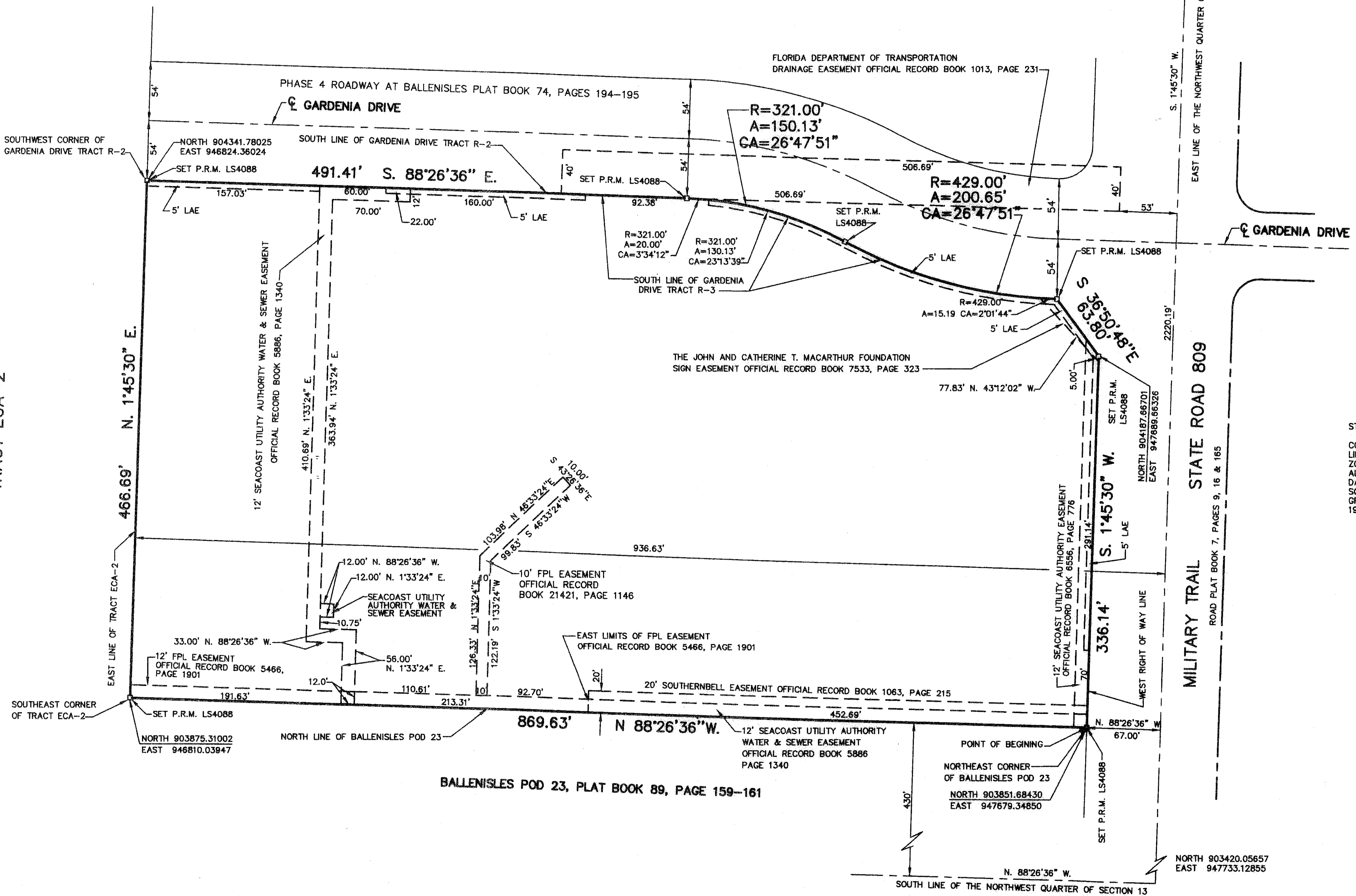
"NOTICE: THIS PLAT, AS RECORDED IN ITS GRAPHIC FORM, IS THE ORIGINAL DEPICTION OF THE SUBDIVIDED LANDS DESCRIBED HEREIN AND WILL IN NO CIRCUMSTANCES BE SUPPLANTED IN AUTHORITY BY ANY OTHER GRAPHIC OR DIGITAL FORM OF THE PLAT. THERE MAY BE ADDITIONAL RESTRICTIONS THAT ARE NOT RECORDED ON THIS PLAT THAT MAY BE FOUND IN THE PUBLIC RECORDS OF THIS COUNTY."

THE BEARINGS ARE BASED ON THE NORTH/SOUTH QUARTER SECTION LINE OF SECTION 13, TOWNSHIP 42 SOUTH, RANGE 42 EAST, PALM BEACH COUNTY, FLORIDA BEARING NORTH 1°45'30" EAST, ACCORDING TO THE NORTH AMERICAN DATUM OF 1983, AND READJUSTED IN 1990, AS COMPUTED ON THE FLORIDA STATE PLANE COORDINATE SYSTEM.

NO BUILDINGS, IMPROVEMENTS OF ANY KIND, TREES OR SHRUBS SHALL BE PLACED ON ANY EASEMENT WITHOUT PRIOR WRITTEN APPROVAL OF ALL EASEMENT BENEFICIARIES AND ALL APPLICABLE CITY OR COUNTY APPROVALS OR PERMITS AS REQUIRED FOR SUCH ENCROACHMENTS.

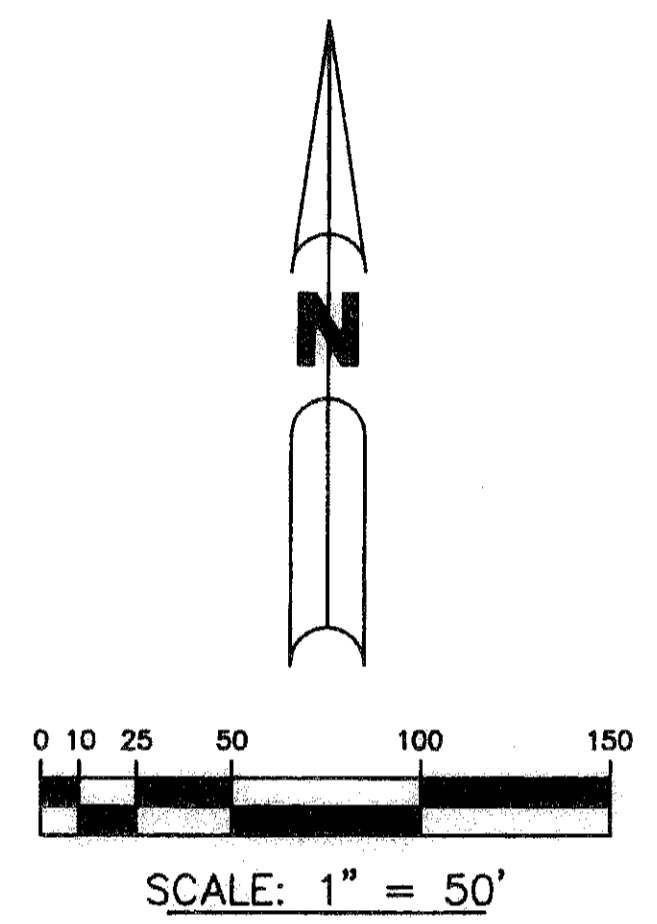
CONTAINING 8.8919 ACRES MORE OR LESS

PHASE 4 ROADWAY AT BALLENSLES PLAT BOOK 74, PAGES 194-195
TRACT ECA-2



NORTHEAST CORNER OF THE
NORTHWEST QUARTER OF SECTION 13
FOUND PALM BEACH COUNTY
BRASS DISK IN CONCRETE
NORTH 906069.00400
EAST 947814.45200

POINT OF COMMENCEMENT
S. 1°45'30" W.
EAST LINE OF THE NORTHWEST QUARTER OF SECTION 13



STATE PLANE COORDINATE DATA
COORDINATES SHOWN ARE GRID
LINEAR UNIT = US SURVEY FOOT
ZONE = FLORIDA EAST
ALL DISTANCES ARE GROUND
DATUM = NAD 83, 1990 ADJUSTED
SCALE FACTOR = 1.00004218
GROUND DISTANCE X SCALE FACTOR = GRID DISTANCE
1983 STATE PLANE TRAVERSE MERCATOR PROJECTION

LEGEND:
R = RADIUS
A = ARC DISTANCE
CA = CENTRAL ANGLE
L = CENTERLINE
PRM = PERMANENT REFERENCE MONUMENT
LAE = LIMITED ACCESS EASEMENT

THIS INSTRUMENT WAS PREPARED BY JAY ALAN BONNER, LS4088
IN THE OFFICE OF SUNSHINE SURVEYORS,
7502 150th COURT NORTH, PALM BEACH GARDENS, FLORIDA 33418

SUNSHINE SURVEYORS
PO Box 31224 (LB4725)
Palm Beach Gardens
Florida 33420-1224

SHEET
2 OF 2