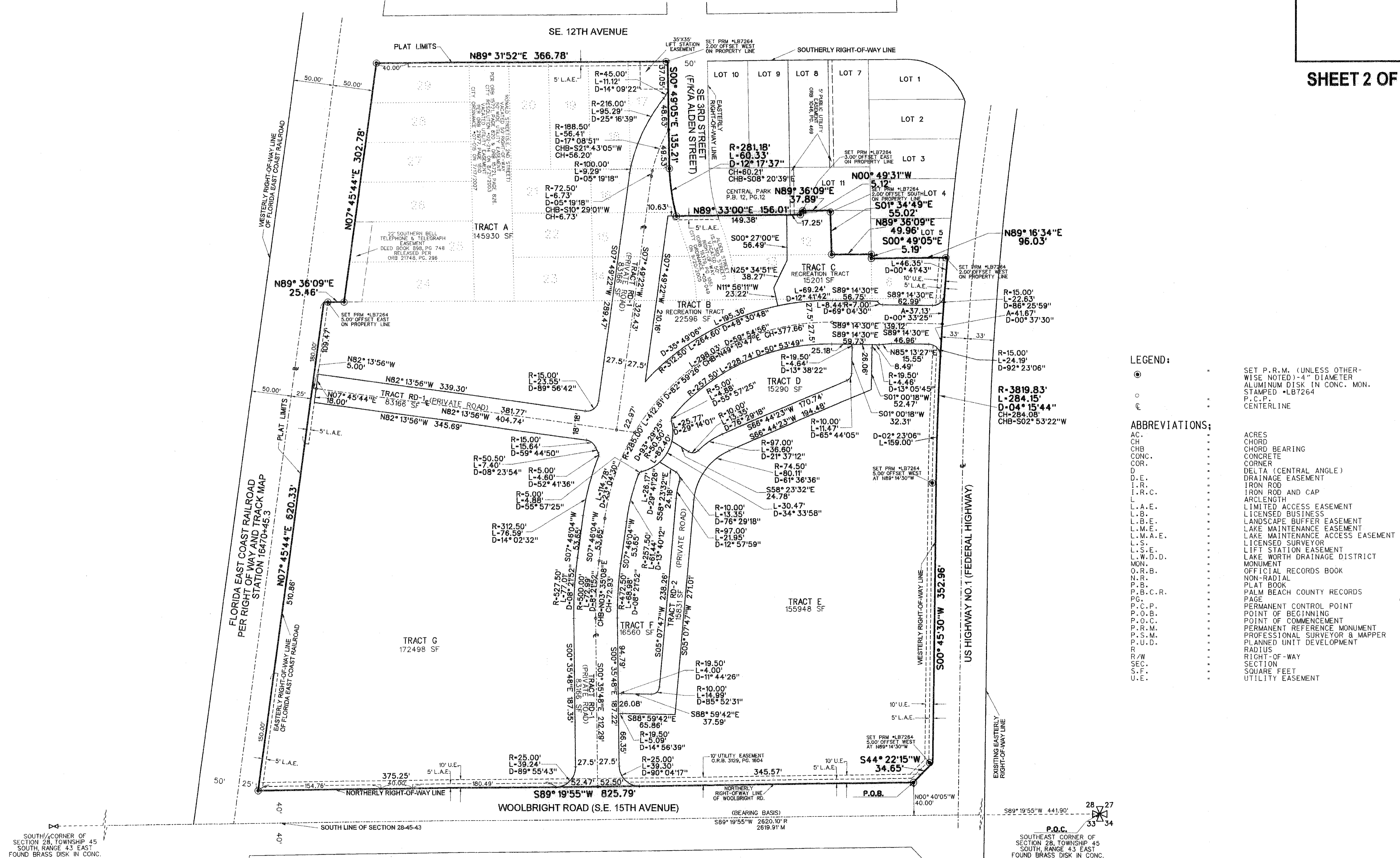
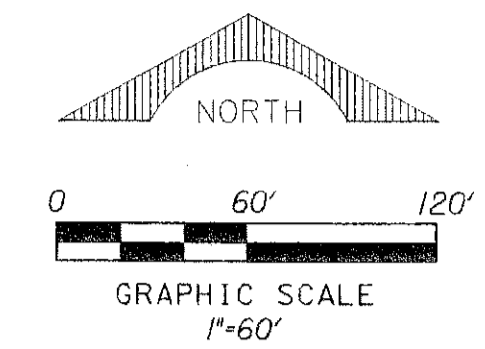


LAS VENTANAS

A PORTION OF THE SOUTHEAST ONE-QUARTER OF SECTION 28, TOWNSHIP 45 SOUTH, RANGE 43 EAST,
 INCLUDING A REPLAT OF LOTS 13 THROUGH 29 AND PORTIONS OF LOTS 6 AND 12, TOGETHER WITH
 PORTIONS OF ALDEN STREET (N/K/A S.E. 3RD STREET) AND RONALD STREET (N/K/A S.E. 2ND STREET)
 OF THE PLAT OF "CENTRAL PARK" (P.B. 12, PG. 12, P.B.C.R.)
 CITY OF BOYNTON BEACH, PALM BEACH COUNTY, FLORIDA.
 JUNE, 2007



- LEGEND:**
- SET P.R.M. (UNLESS OTHERWISE NOTED)-4" DIAMETER ALUMINUM DISK IN CONC. MON. STAMPED "LB7264"
 - P.C.P.
 - ⊙ CENTERLINE
- ABBREVIATIONS:**
- AC. ACRES
 - CH. CHORD
 - CHB. CHORD BEARING
 - CONC. CONCRETE
 - COR. CORNER
 - D. DELTA (CENTRAL ANGLE)
 - D.E. DRAINAGE EASEMENT
 - I.R. IRON ROD
 - I.R.C. IRON ROD AND CAP
 - L. LENGTH
 - L.A.E. LIMITED ACCESS EASEMENT
 - L.B. LICENSED BUSINESS
 - L.B.E. LANDSCAPE BUFFER EASEMENT
 - L.M.E. LAKE MAINTENANCE EASEMENT
 - L.M.A.E. LAKE MAINTENANCE ACCESS EASEMENT
 - L.S. LICENSED SURVEYOR
 - L.S.E. LIFT STATION EASEMENT
 - L.W.D. LAKE WORTH DRAINAGE DISTRICT
 - MON. MONUMENT
 - O.R.B. OFFICIAL RECORDS BOOK
 - N.R. NON-RADIAL
 - P.B. PLAT BOOK
 - P.B.C.R. PALM BEACH COUNTY RECORDS
 - P.G. PAGE
 - P.C.P. PERMANENT CONTROL POINT
 - P.O.B. POINT OF BEGINNING
 - P.O.C. POINT OF COMMENCEMENT
 - P.P.R.M. PERMANENT REFERENCE MONUMENT
 - P.S.M. PROFESSIONAL SURVEYOR & MAPPER
 - P.U.D. PLANNED UNIT DEVELOPMENT
 - R. RADIUS
 - R/W. RIGHT-OF-WAY
 - SEC. SECTION
 - S.F. SQUARE FEET
 - U.E. UTILITY EASEMENT

SOUTH-CORNER OF SECTION 28, TOWNSHIP 45 SOUTH, RANGE 43 EAST FOUND BRASS DISK IN CONC.

P.O.C. SOUTHEAST CORNER OF SECTION 28, TOWNSHIP 45 SOUTH, RANGE 43 EAST FOUND BRASS DISK IN CONC.