

SEMINOLE RIDGE

BEING A REPLAT OF LOT 37, JUNO BEACH RECORDED IN PLAT BOOK 22, PAGE 49, PUBLIC RECORDS OF PALM BEACH COUNTY, FLORIDA, LYING IN SECTION 28, TOWNSHIP 41 SOUTH, RANGE 43 EAST, TOWN OF JUNO BEACH, PALM BEACH COUNTY, FLORIDA

MARCH, 2007

SHEET 2 OF 3

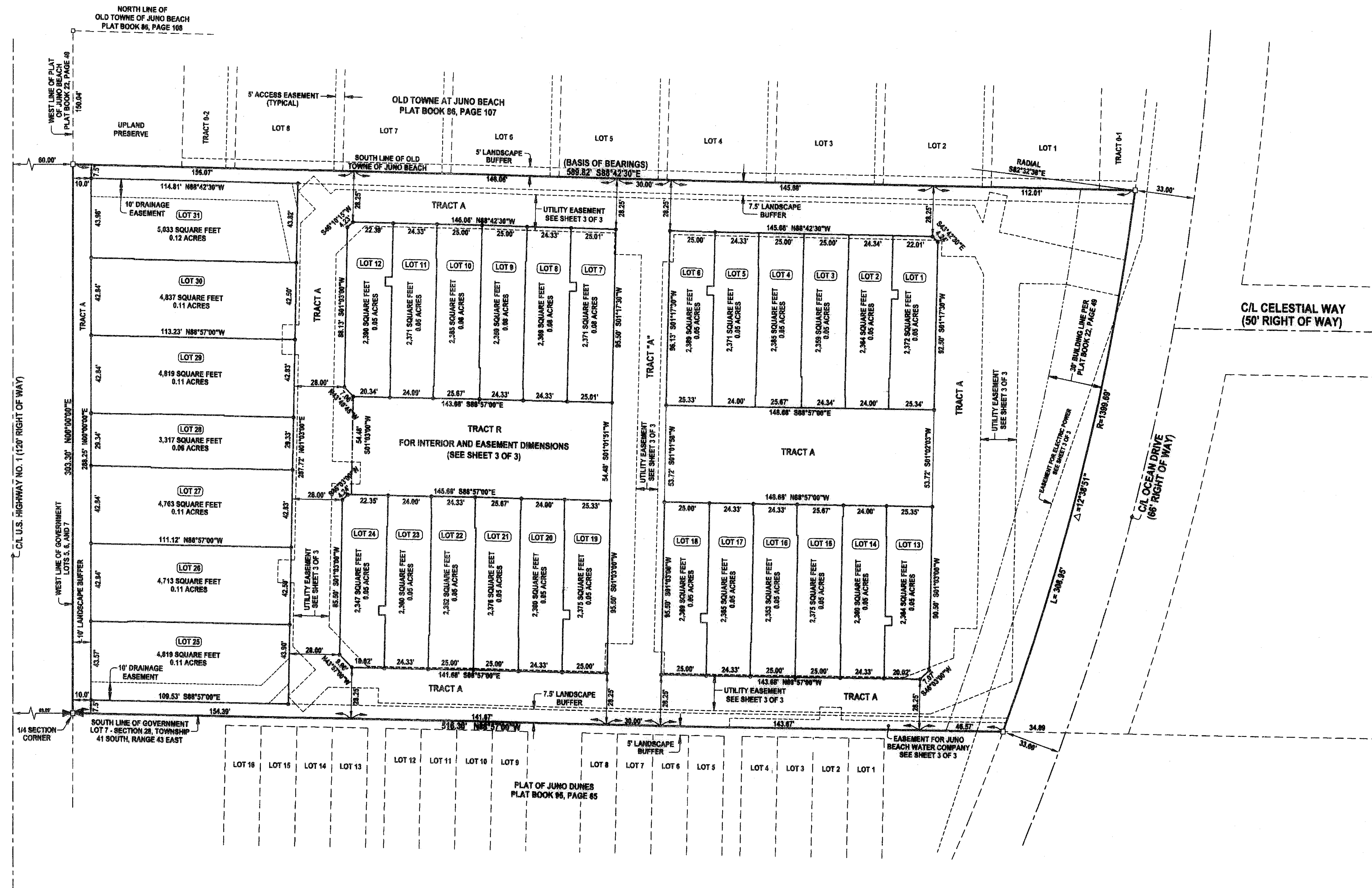
101

STATE OF FLORIDA
COUNTY OF PALM BEACH


THIS PLAT WAS FILED FOR RECORD AT _____
THIS _____ DAY OF _____, 2007
AND DULY RECORDED IN PLAT BOOK NO. _____
ON PAGE _____

CLERK OF THE CIRCUIT COURT

BY _____
DEPUTY CLERK



THIS INSTRUMENT WAS PREPARED BY DONALD D. DANIELS IN THE OFFICES OF DONALD D. DANIELS, INC.

 <p>DONALD D. DANIELS, INC. Consulting Surveyors & Mappers</p>	SEMINOLE RIDGE	
	<p>Florida Certificate LB No. 4165 725 North A-1-A, Suite C-111 Jupiter, Florida 33477 Tel: (561) 747-8884</p>	<p>REFERENCE: 2249 OFFICE: D. OBHA CHECKED: DDD</p>