

SADDLE CLUB OF WELLINGTON

LYING IN SECTION 32, TOWNSHIP 44 SOUTH, RANGE 41 EAST,
VILLAGE OF WELLINGTON, PALM BEACH COUNTY, FLORIDA.
SHEET 3 OF 3
MAY, 2007

105

P.O.C.
NE CORNER OF
SECTION 32/44/41
FD. P.B.C. BRASS DISK

UNPLATTED

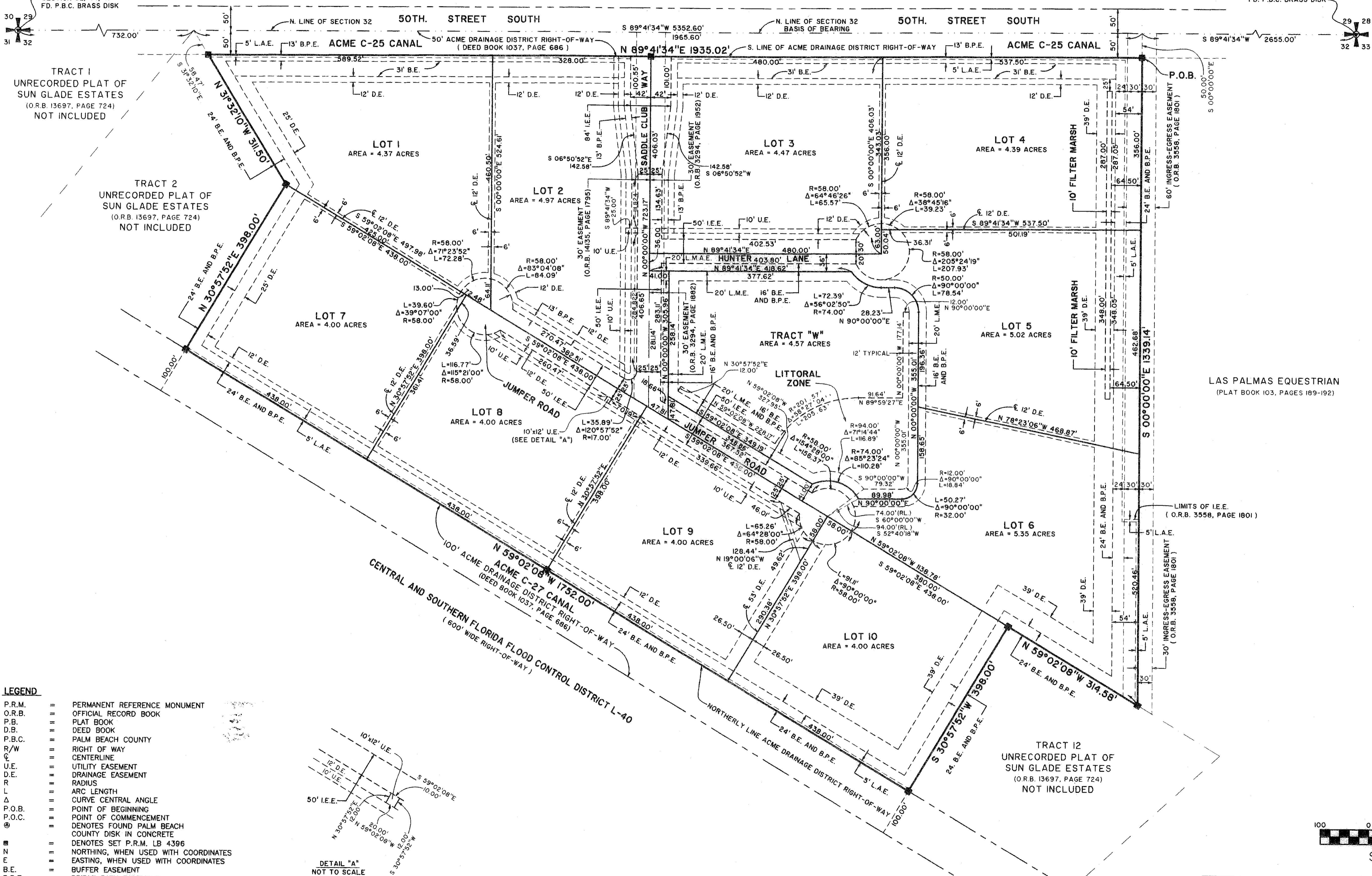
NW CORNER OF
SECTION 32/44/41
FD. P.B.C. BRASS DISK

29 28
32 33

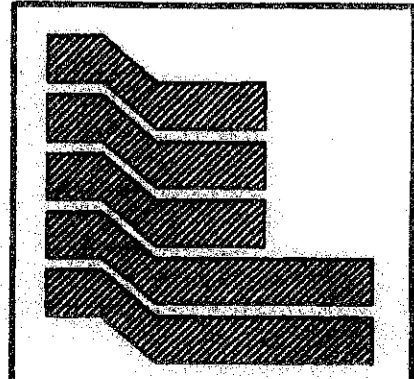
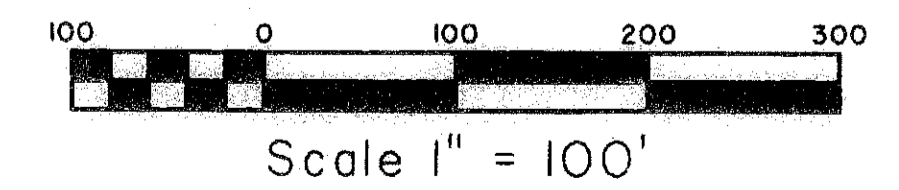
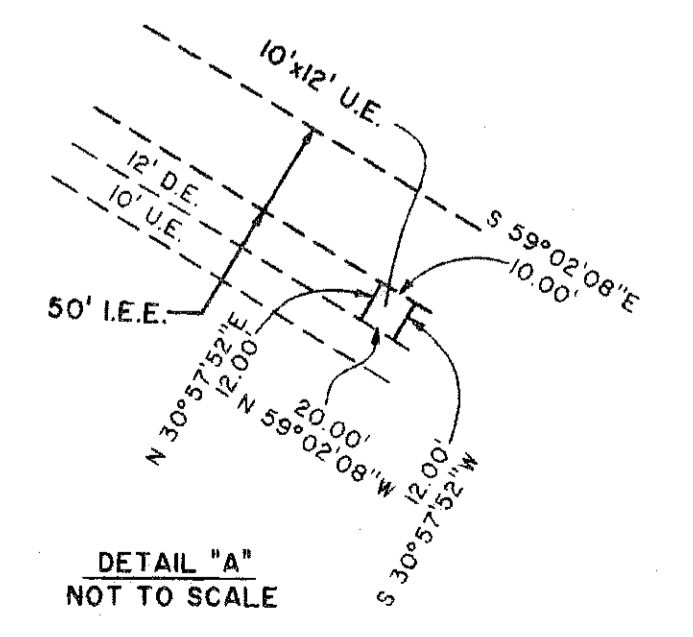
TRACT 1
UNRECORDED PLAT OF
SUN GLADE ESTATES
(O.R.B. 13697, PAGE 724)
NOT INCLUDED

TRACT 2
UNRECORDED PLAT OF
SUN GLADE ESTATES
(O.R.B. 13697, PAGE 724)
NOT INCLUDED

STATE OF FLORIDA 55
COUNTY OF PALM BEACH
THIS PLAT WAS FILED FOR RECORD AT _____
M. THIS _____ DAY OF _____ 2007
AND DULY RECORDED IN PLAT BOOK NO. _____
ON PAGE _____
SHARON R. BOCK,
CLERK AND COMPTROLLER,
PALM BEACH COUNTY
BY _____ D.C.



- LEGEND**
- P.R.M. = PERMANENT REFERENCE MONUMENT
 - O.R.B. = OFFICIAL RECORD BOOK
 - P.B. = PLAT BOOK
 - D.B. = DEED BOOK
 - P.B.C. = PALM BEACH COUNTY
 - R/W = RIGHT OF WAY
 - C = CENTERLINE
 - U.E. = UTILITY EASEMENT
 - D.E. = DRAINAGE EASEMENT
 - R = RADIUS
 - L = ARC LENGTH
 - Δ = CURVE CENTRAL ANGLE
 - P.O.B. = POINT OF BEGINNING
 - P.O.C. = POINT OF COMMENCEMENT
 - ⊙ = DENOTES FOUND PALM BEACH COUNTY DISK IN CONCRETE
 - = DENOTES SET P.R.M. LB 4396
 - N = NORTHING, WHEN USED WITH COORDINATES
 - E = EASTING, WHEN USED WITH COORDINATES
 - B.E. = BUFFER EASEMENT
 - B.P.E. = BRIDLE PATH EASEMENT
 - I.E.E. = INGRESS-EGRESS EASEMENT
 - L.M.E. = LAKE MAINTENANCE EASEMENT
 - L.M.A.E. = LAKE MAINTENANCE ACCESS EASEMENT
 - FD. = FOUND
 - C.M. = CONCRETE MONUMENT
 - RL. = RADIAL
 - L.A.E. = LIMITED ACCESS EASEMENT



Landmark Surveying & Mapping Inc.
1850 Forest Hill Boulevard
Ph. (561) 433-5405 Suite 100 W.P.B. Florida
LB # 4396

SADDLE CLUB OF WELLINGTON