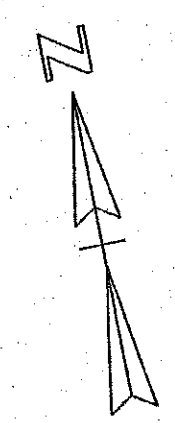
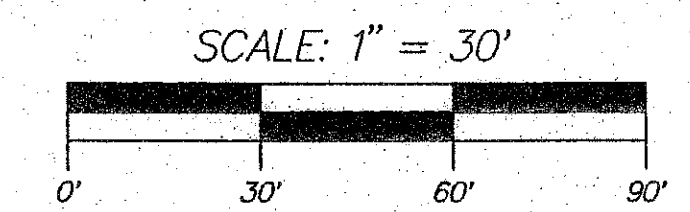
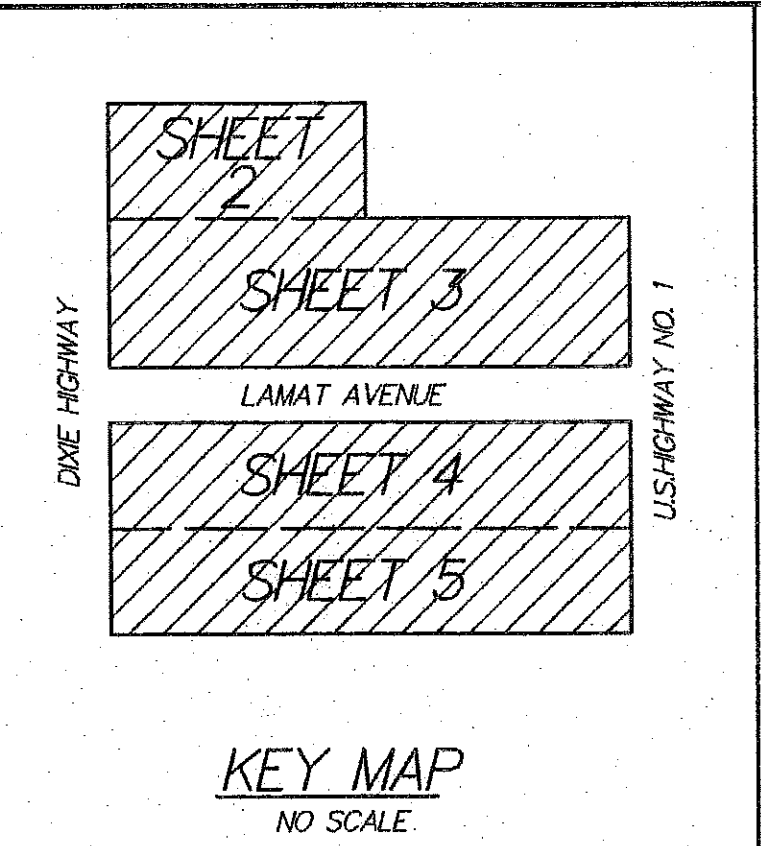
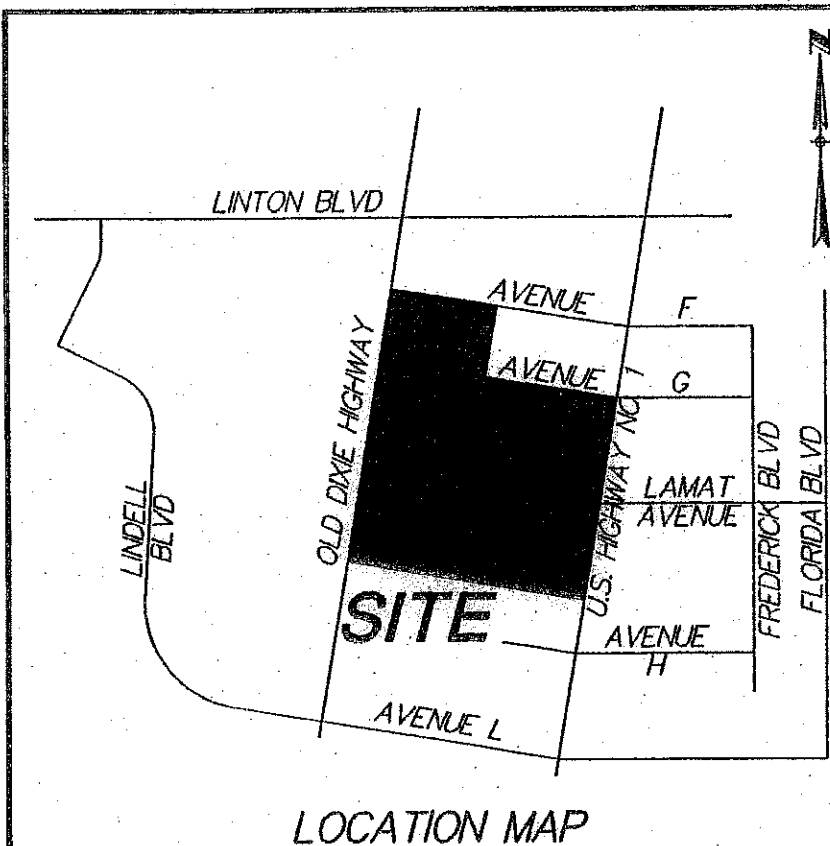


MORSE DELRAY TOYOTA RE-PLAT

BEING A REPLAT OF LOTS 1 AND 2, MORSE SATURN DEALERSHIP
(PLAT BOOK 65, PAGE 107) AND TRACT B, DELRAY MAZDA (PLAT BOOK
64, PAGE 21), BEING IN SECTION 29, TOWNSHIP 46 SOUTH, RANGE
43 EAST, CITY OF DELRAY BEACH, PALM BEACH COUNTY, FLORIDA

AUGUST 2006
SHEET 3 OF 5



115

COUNTY OF PALM BEACH
STATE OF FLORIDA
THIS PLAT WAS FILED FOR RECORD AT _____
THIS _____ DAY OF _____
20____ AND DULY RECORDED IN PLAT BOOK NO. _____
ON PAGE _____
SHARON R. BOCK, CLERK OF CIRCUIT COURT
AND COMPTROLLER.
BY _____ D.C.

- LEGEND:
- CL = CENTERLINE
 - O.R.B. = OFFICIAL RECORD BOOK
 - F.P.L.CO. = FLORIDA POWER & LIGHT COMPANY
 - W.M.E. = WATER MAIN EASEMENT
 - P.R.M. = PERMANENT REFERENCE MONUMENT
(4"x4" CONCRETE MONUMENT STAMPED
"PRM LB353")

