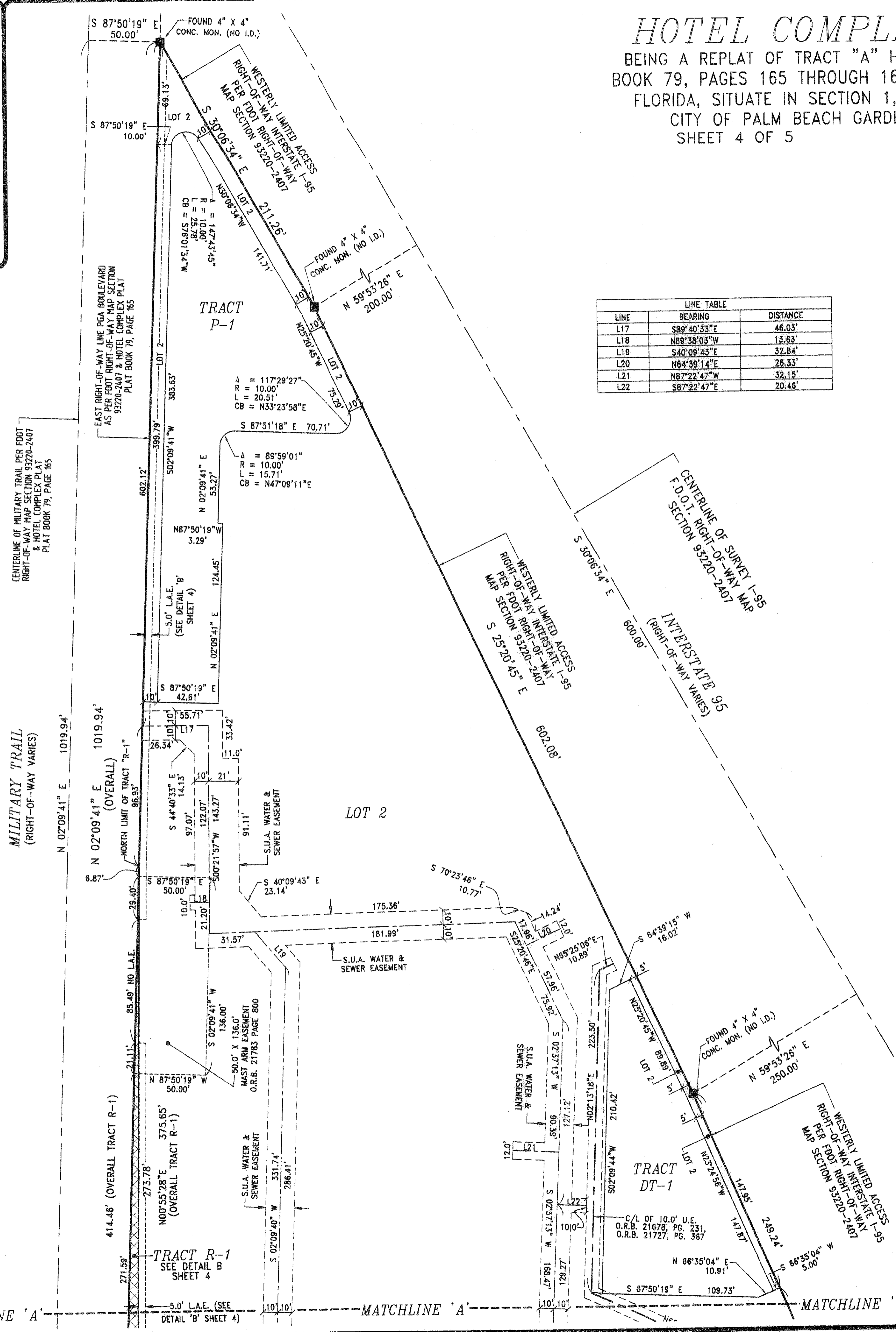
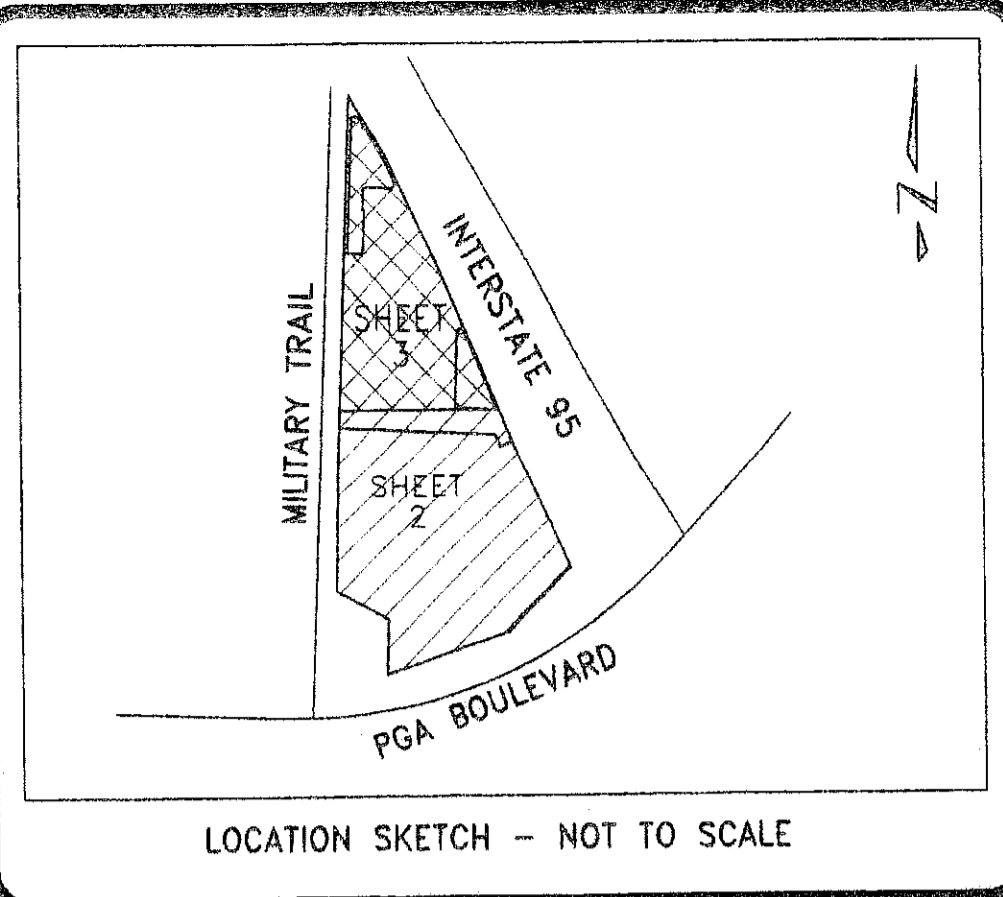


STATE OF FLORIDA
 COUNTY OF PALM BEACH
 THIS PLAT WAS FILED
 FOR RECORD AT _____ M.
 THIS DAY OF _____, 200____
 AND DULY RECORDED IN PLAT
 NO. _____ ON PAGES _____
 THRU _____
 SHARON R. BOCK
 CLERK AND COMPTROLLER
 BY _____ D.C.

HOTEL COMPLEX PLAT REPLAT

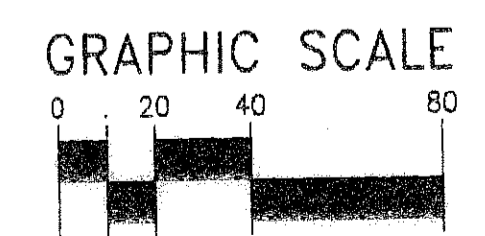
BEING A REPLAT OF TRACT "A" HOTEL COMPLEX PLAT, RECORDED IN PLAT BOOK 79, PAGES 165 THROUGH 166 PUBLIC RECORDS, PALM BEACH COUNTY, FLORIDA, SITUATE IN SECTION 1, TOWNSHIP 42 SOUTH, RANGE 42 EAST, CITY OF PALM BEACH GARDENS, PALM BEACH COUNTY, FLORIDA
 SHEET 4 OF 5
 AUGUST 2007



LINE	BEARING	DISTANCE
L17	S89°40'33"E	46.03'
L18	N89°38'03"W	13.83'
L19	S40°09'43"E	32.84'
L20	N64°39'14"E	26.33'
L21	N87°22'47"W	32.15'
L22	S87°22'47"E	20.46'

AREA COMPUTATIONS		
LOT / TRACT	SQUARE FOOTAGE	ACRES
LOT 1	349,334	8.02
LOT 2	235,698	5.41
TRACT R-1	1,681	0.04
TOTAL	586,713	13.47

LOT / TRACT	SQUARE FOOTAGE	ACRES
LOT 2	235,698	5.41
TRACT DT-1	14,966	0.34
TRACT P-1	23,935	0.55
LOT 2 LESS TRACT DT-1 AND LESS TRACT P-1	197,797	4.52



CAD FILE:	Z:\1999 630 TO 672\99-651 DOUBLETREE NORTH\DWG\HOTEL COMPLEX PLAT RE-PLAT.DWG
DATE:	12-18-06
CHECKED:	SB
PROJECT No.:	99-651
SCALE:	1" = 40'
APPROVED:	SB
DRAWN:	SB
DWG No.:	D99-651P

Keshavarz & Associates, Inc.
 CONSULTING ENGINEERS - SURVEYORS
 711 North Dixie Highway, Suite 201
 West Palm Beach, Florida 33401
 Tel: (561) 689-8600 Fax: (561) 689-7476 LB 4897

PLOT DATE: Jul 25, 2007 TIME: 5:07:24 BY: rbock
 DRAWING: Z:\1999 630 TO 672\99-651 DOUBLETREE NORTH\HOTEL COMPLEX PLAT RE-PLAT.DWG LAYOUT SHEET 4