

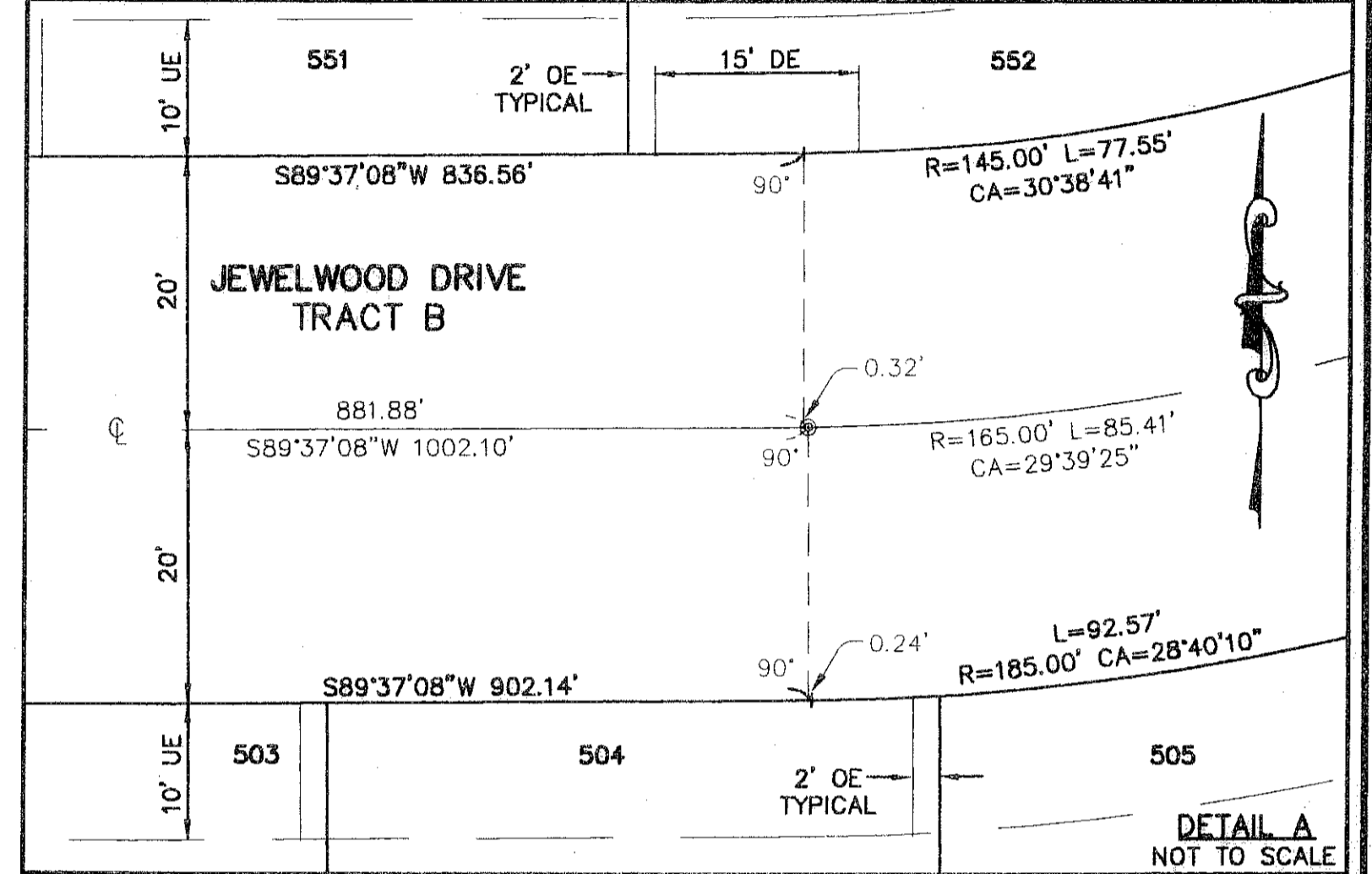
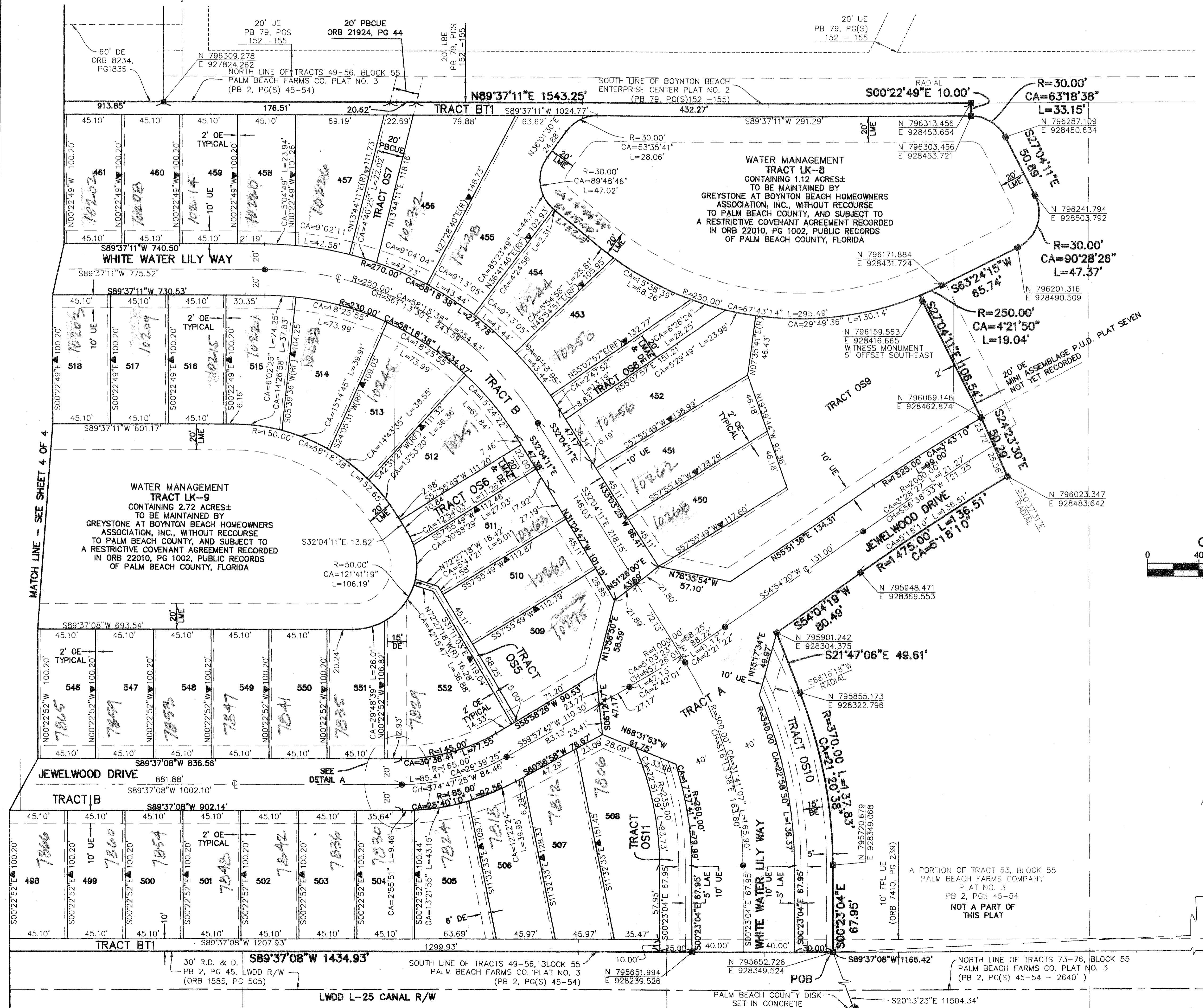
# MINI ASSEMBLAGE P.U.D. PLAT SIX

ALSO KNOWN AS GREYSTONE P.U.D.  
BEING A REPLAT OF TRACTS 50 AND 51 AND A PORTION OF TRACTS 49, 52, AND 53, BLOCK 55,  
PALM BEACH FARMS CO., PLAT NO. 3, PLAT BOOK 2, PAGES 45 THROUGH 54, PUBLIC RECORDS  
OF PALM BEACH COUNTY FLORIDA, BEING IN SECTION 28, TOWNSHIP 45 SOUTH, RANGE 42  
EAST PALM BEACH COUNTY, STATE OF FLORIDA  
JANUARY 2007 SHEET 3 OF 4

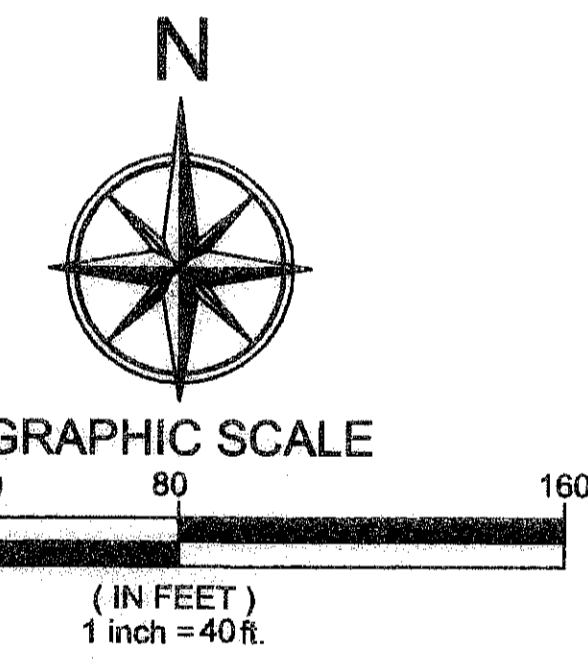
149

This Instrument Prepared By:  
Kevin M. Beck, P.S.M.  
Certificate of Authorization No. LB 6791  
JANUARY 2007

660 Village Boulevard, Suite 340  
West Palm Beach, Florida 33409  
Phone: 561.684.8161 Fax 561.684.6860



- LEGEND:
- BE = BUFFER EASEMENT
  - CA = CENTRAL (DELTA) ANGLE
  - CH = CHORD (BEARING AND DISTANCE)
  - DB = DEED BOOK
  - DE = DRAINAGE EASEMENT
  - ESMT = EASEMENT
  - L = ARC LENGTH
  - LAE = LIMITED ACCESS EASEMENT
  - LMAE = LAKE MAINTENANCE ACCESS EASEMENT
  - LME = LAKE MAINTENANCE EASEMENT
  - LWDD = LAKE WORTH DRAINAGE DISTRICT
  - OE = OVERHANG EASEMENT
  - ORB = OFFICIAL RECORDS BOOK
  - PB = PLAT BOOK
  - PBCUE = PALM BEACH COUNTY UTILITY EASEMENT
  - POB = POINT OF BEGINNING
  - POC = POINT OF COMMENCEMENT
  - P.U.D. = PLANNED UNIT DEVELOPMENT
  - PG(S) = PAGE(S)
  - (R) = RADIAL
  - (RF) = RADIAL TO FRONT
  - R.D&D = ROAD, DIKE AND DITCH RESERVATION
  - R/W = RIGHT-OF-WAY
  - UE = UTILITY EASEMENT
  - USC&G = UNITED STATES COASTAL AND GEODETIC
  - C/L = CENTERLINE
  - @ = CENTERLINE
  - = PERMANENT REFERENCE MONUMENT (4" X 4" CONCRETE MONUMENT WITH A 2" ALUMINUM PLATE STAMPED "PRM LB 6791")
  - ▼ = ZERO LOT LINE SYMBOL
  - = PERMANENT CONTROL POINT (SET "PK" NAIL AND DISK LABELED "LB 6791")



2/1/2008 08:58:44 Mini Assemblage Boundary and Plat Survey V:\P\A\1-V-06344-B5-Plat6.dwg 9/5/2007 10:23:41 AM EDT