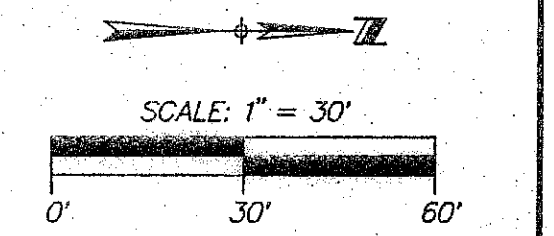
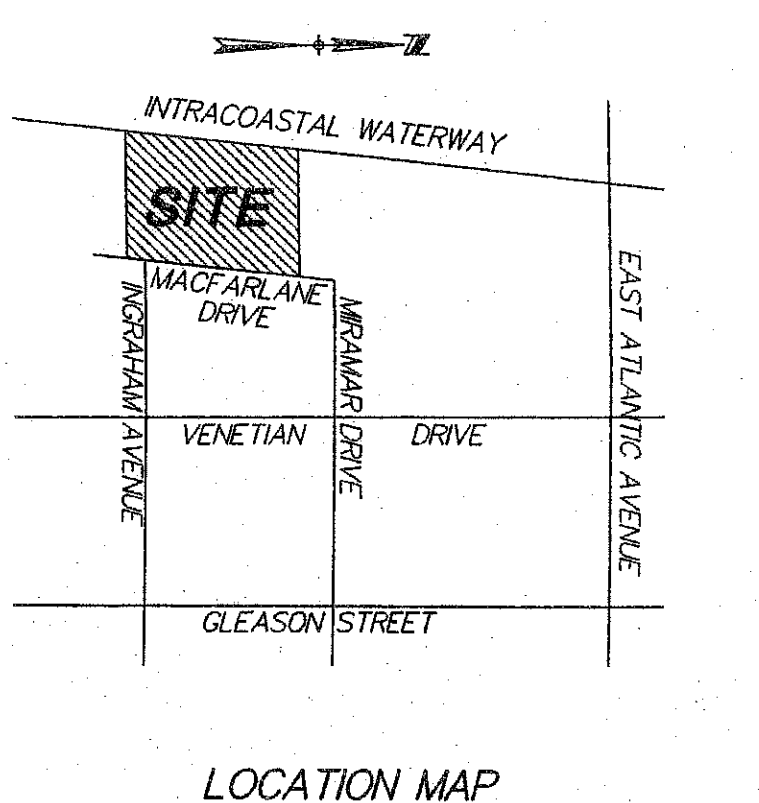


COUNTY OF PALM BEACH  
STATE OF FLORIDA  
THIS PLAT WAS FILED FOR RECORD AT \_\_\_\_\_  
THIS \_\_\_\_\_ DAY OF \_\_\_\_\_  
20\_\_\_\_, AND DULY RECORDED IN PLAT BOOK NO. \_\_\_\_\_  
ON PAGE \_\_\_\_\_  
SHARON R. BOCK, CLERK OF CIRCUIT COURT  
AND COMPTROLLER.  
BY \_\_\_\_\_ D.C.

# YACHT CLUB AT DELRAY BEACH

BEING A REPLAT OF LOT 1, DELRAY BEACH YACHT CLUB, ACCORDING TO THE PLAT THEREOF AS RECORDED IN PLAT BOOK 74, PAGES 11 AND 12, (P.R.P.B.CO.), BEING IN SECTION 16, TOWNSHIP 46 SOUTH, RANGE 43 EAST, CITY OF DELRAY BEACH, PALM BEACH COUNTY, FLORIDA

SHEET 2 OF 2  
MAY 2006



### NOTES:

ALL BEARINGS SHOWN HEREON ARE RELATIVE TO THE CENTERLINE OF MACFARLANE DRIVE HAVING AN ASSUMED BEARING OF N7°20'10"E.

NOTICE: THIS PLAT, AS RECORDED IN ITS GRAPHIC FORM IS THE OFFICIAL DEPICTION OF THE SUBDIVIDED LANDS DESCRIBED HEREIN AND WILL IN NO CIRCUMSTANCES BE SUPPLANTED IN AUTHORITY BY ANY OTHER GRAPHIC OR DIGITAL FORM OF THE PLAT. THERE MAY BE ADDITIONAL RESTRICTIONS THAT ARE NOT RECORDED ON THIS PLAT THAT MAY BE FOUND IN THE PUBLIC RECORDS OF THIS COUNTY.

THE CITY OF DELRAY BEACH IS HEREBY GRANTED THE RIGHT OF ACCESS FOR EMERGENCY AND MAINTENANCE PURPOSES.

THIS INSTRUMENT WAS PREPARED BY PAUL D. ENGLE, IN THE OFFICE OF O'BRIEN, SLITER & O'BRIEN, INC., 2601 NORTH FEDERAL HIGHWAY, DELRAY BEACH, FLORIDA 33483. (561) 276-4501

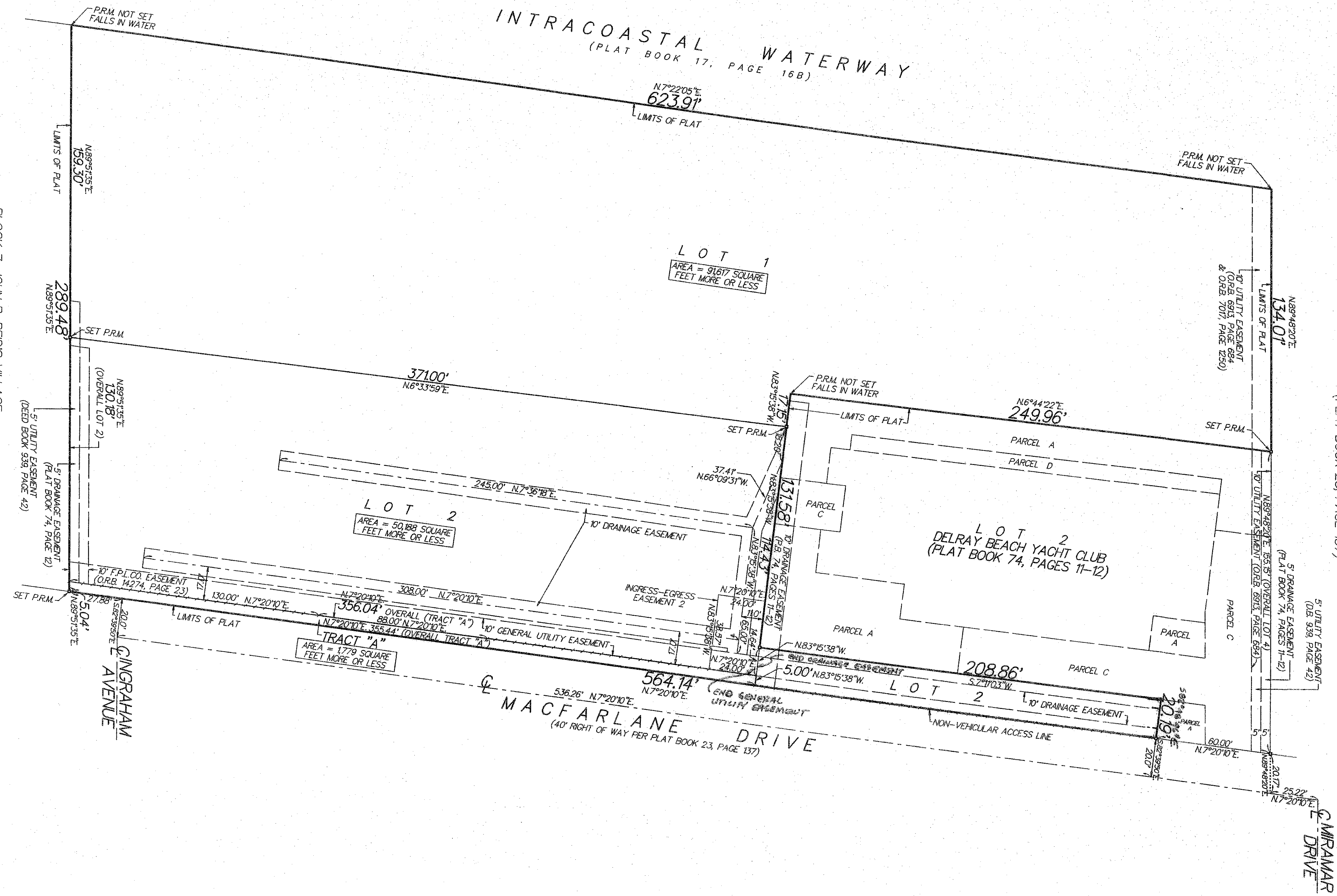
PERMANENT REFERENCE MONUMENTS ARE SHOWN THUS:  $\blacksquare$

THERE SHALL BE NO BUILDINGS OR ANY KIND OF CONSTRUCTION PLACED ON UTILITY OR DRAINAGE EASEMENTS. CONSTRUCTION OR LANDSCAPING UPON MAINTENANCE OR MAINTENANCE ACCESS EASEMENTS MUST BE IN CONFORMANCE WITH ALL BUILDING AND ZONING CODES AND/OR ORDINANCES OF THE CITY OF DELRAY BEACH.

THERE SHALL BE NO TREES OR SHRUBS PLACED ON UTILITY EASEMENTS WHICH ARE PROVIDED FOR WATER AND SEWER USE OR UPON DRAINAGE EASEMENTS. LANDSCAPING ON ANY OTHER UTILITY EASEMENT SHALL BE ALLOWED ONLY AFTER CONSENT OF ALL UTILITY COMPANIES OCCUPYING SAME.

### LEGEND:

- $\text{C}$  = CENTERLINE
- OR.B. = OFFICIAL RECORD BOOK
- PR.M. = PERMANENT REFERENCE MONUMENT STAMPED "PRM LB353"
- P.R.P.B.CO. = PUBLIC RECORDS PALM BEACH COUNTY
- P.B. = PLAT BOOK
- D.B. = DEED BOOK
- F.P.L.CO. = FLORIDA POWER & LIGHT COMPANY



BLOCK 7, JOHN B. REID'S VILLAGE  
(PLAT BOOK 23, PAGE 137)

BLOCK N, JOHN B. REID'S VILLAGE  
(PLAT BOOK 23, PAGE 137)