

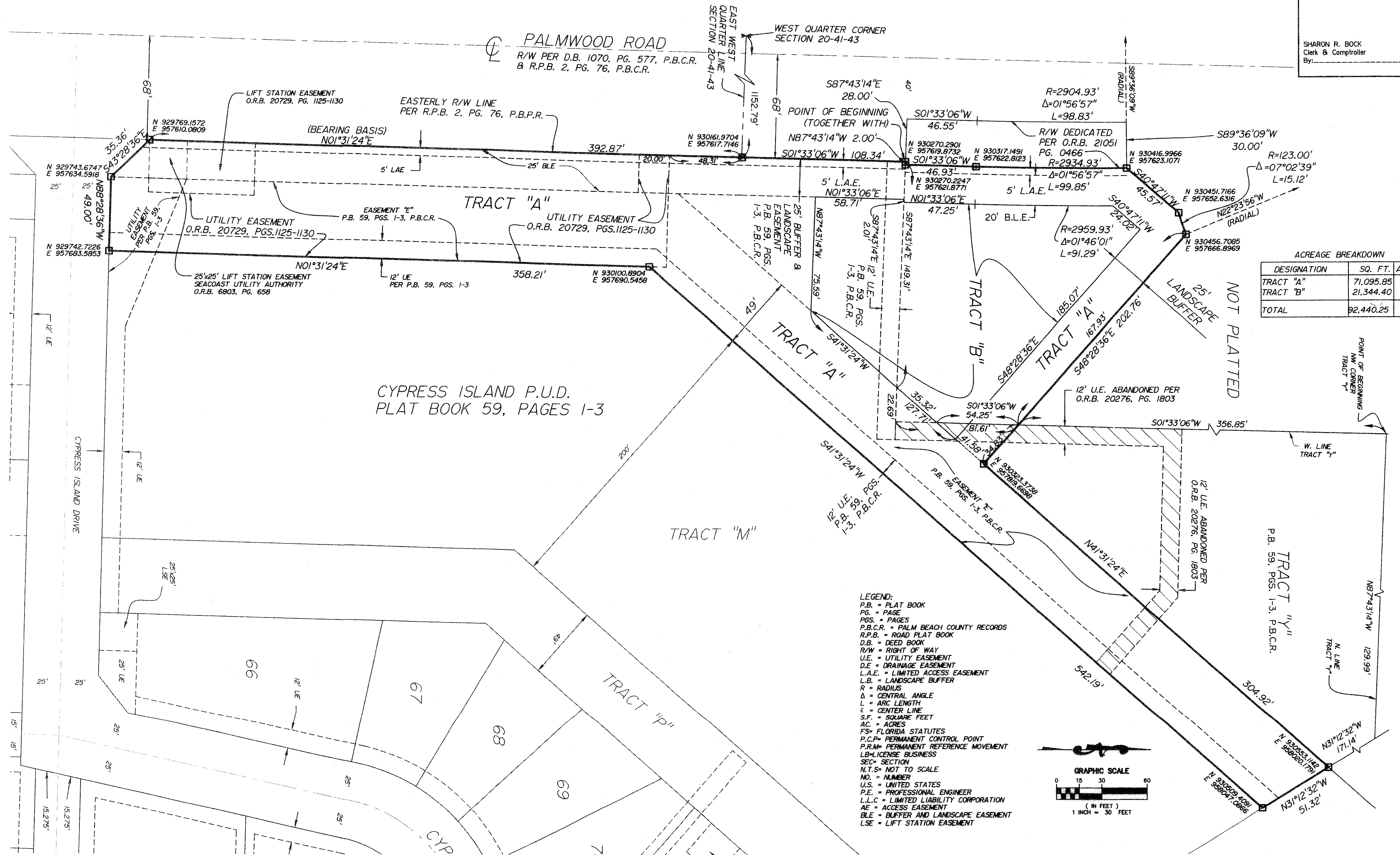
CYPRESS ISLAND, TRACT "Y" REPLAT

BEING A REPLAT OF A PORTION OF TRACT "Y", CYPRESS ISLAND P.U.D.
PLAT BOOK 59 PAGES 1 THROUGH 3, LYING IN NORTHWEST ONE-QUARTER (NW 1/4)
AND SOUTHWEST ONE QUARTER (SW 1/4) OF
SECTION 20, TOWNSHIP 41 SOUTH, RANGE 43 EAST,
PALM BEACH COUNTY, FLORIDA.
AUGUST 2007 SHEET 2 OF 2

154

STATE OF FLORIDA
COUNTY OF PALM BEACH
This plat was filed for record
of _____ this _____ 2007,
day of _____
and duly recorded in Plat Book
_____ Pages _____ Through _____

SHARON R. BOCK
Clerk & Comptroller
By: _____



ACREAGE BREAKDOWN

DESIGNATION	SQ. FT.	ACRES
TRACT "A"	71,095.85	1.633
TRACT "B"	21,344.40	0.489
TOTAL	92,440.25	2.122