

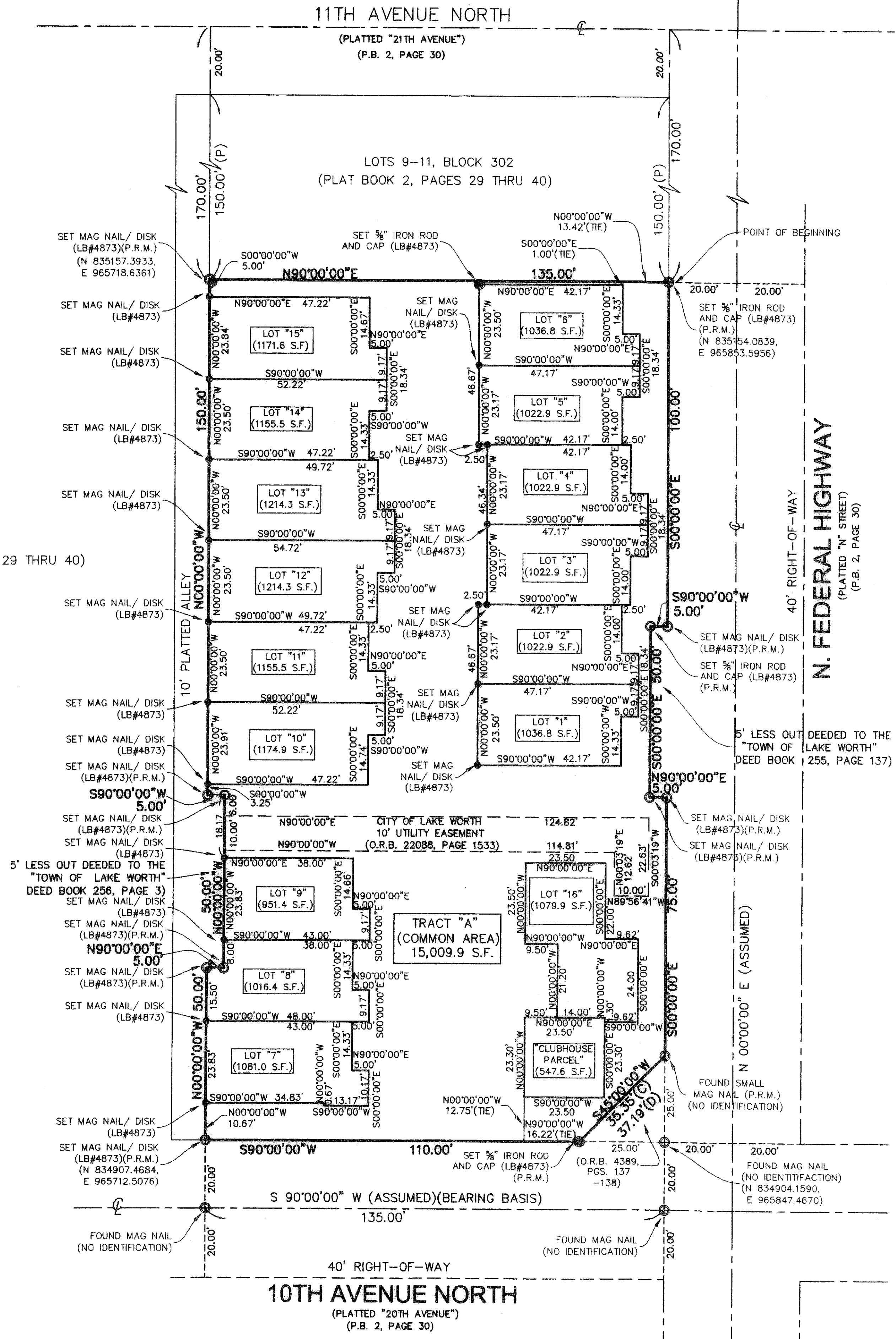
### TUSCAN VILLAS OF LAKE WORTH

A REPLAT OF LOTS 12 THRU 16, BLOCK 302, PALM BEACH FARMS  
COMPANY, PLAT NO. 2 (FORMERLY KNOWN AS THE TOWNSITE OF  
LUCERNE, NOW KNOWN AS LAKE WORTH); RECORDED IN PLAT BOOK 2, PAGES 29  
THRU 40, LESS THE EAST FIVE FEET OF LOT 14; LESS THE WEST FIVE FEET OF LOT 15  
AND LESS THAT CERTAIN PART OF LOT 16 DEEDED TO THE COUNTY OF PALM BEACH,  
FLORIDA AS RECORDED IN OFFICIAL RECORD BOOK 4389, PAGES 137 AND 138.

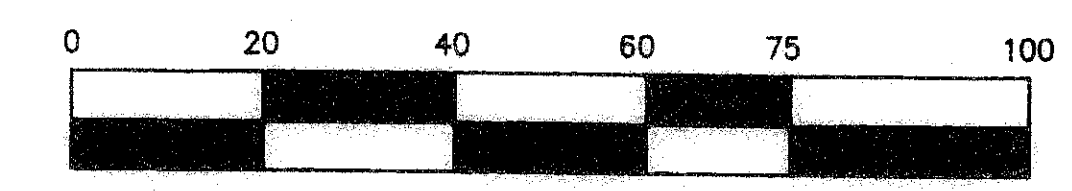
LOCATED IN SECTION 21, TOWNSHIP 44 SOUTH, RANGE 43 EAST,  
CITY OF LAKE WORTH  
PALM BEACH COUNTY, FLORIDA  
AUGUST, 2007  
SHEET TWO OF TWO



BLOCK 302  
(PLAT BOOK 2, PAGES 29 THRU 40)



**NOTE:**  
STATE PLANE COORDINATES SHOWN HEREON ARE GRID COORDINATES  
AND RELATIVE TO PALM BEACH COUNTY MONUMENT "POLICE"  
(BRASS DISK IN CONCRETE MONUMENT) (N 840731.5737, E 962374.0650)  
AND PALM BEACH COUNTY MONUMENT "DAWSON"  
(BRASS DISK IN CONCRETE MONUMENT) (N 824645.4210, E 964537.8980)  
DATUM= NAD 83 (1990 ADJUSTMENT)  
ZONE= FLORIDA EAST ZONE  
LINEAR UNIT= U.S. SURVEY FEET  
COORDINATE SYSTEM= 1983 STATE PLANE TRANSVERSE MERCATOR PROJECTION  
ALL DISTANCES ARE GROUND  
SCALE FACTOR= 1.0000486  
NO ROTATION= (GRID BEARING TO PLAT BEARING)



GRAPHIC SCALE IN FEET  
SCALE: 1" = 20'

#### LEGEND

- O.R.B. = Official Record Book
- PG. = Page
- P.R.M. = Permanent Reference Monument
- S.F. = Square Foot
- ℄ = Centerline
- (P) = Plat (Plat Book 2, Pages 29 thru 40)
- (C) = Calculated
- (D) = Deed
- = P.R.M. Monumentation  
(Found or Set, Whichever is Applicable)
- = 5/8" Iron Rod and Cap (LB#4873)
- = Mag Nail/ Disk (LB#4873)

*Jack H. Casler*

JACK H. CASLER, P.S.M.  
FLORIDA CERTIFICATE NO.: LS 2731

**JDC** Development Services, Inc. LB#4873  
Wellington Country Plaza  
12777 W. Forest Hill Blvd., Suite 1503, Wellington, FL 33414  
Fax: (561) 790-4488 (561) 790-4471