

VILLAGE SQUARE PROFESSIONAL PARK PHASE II

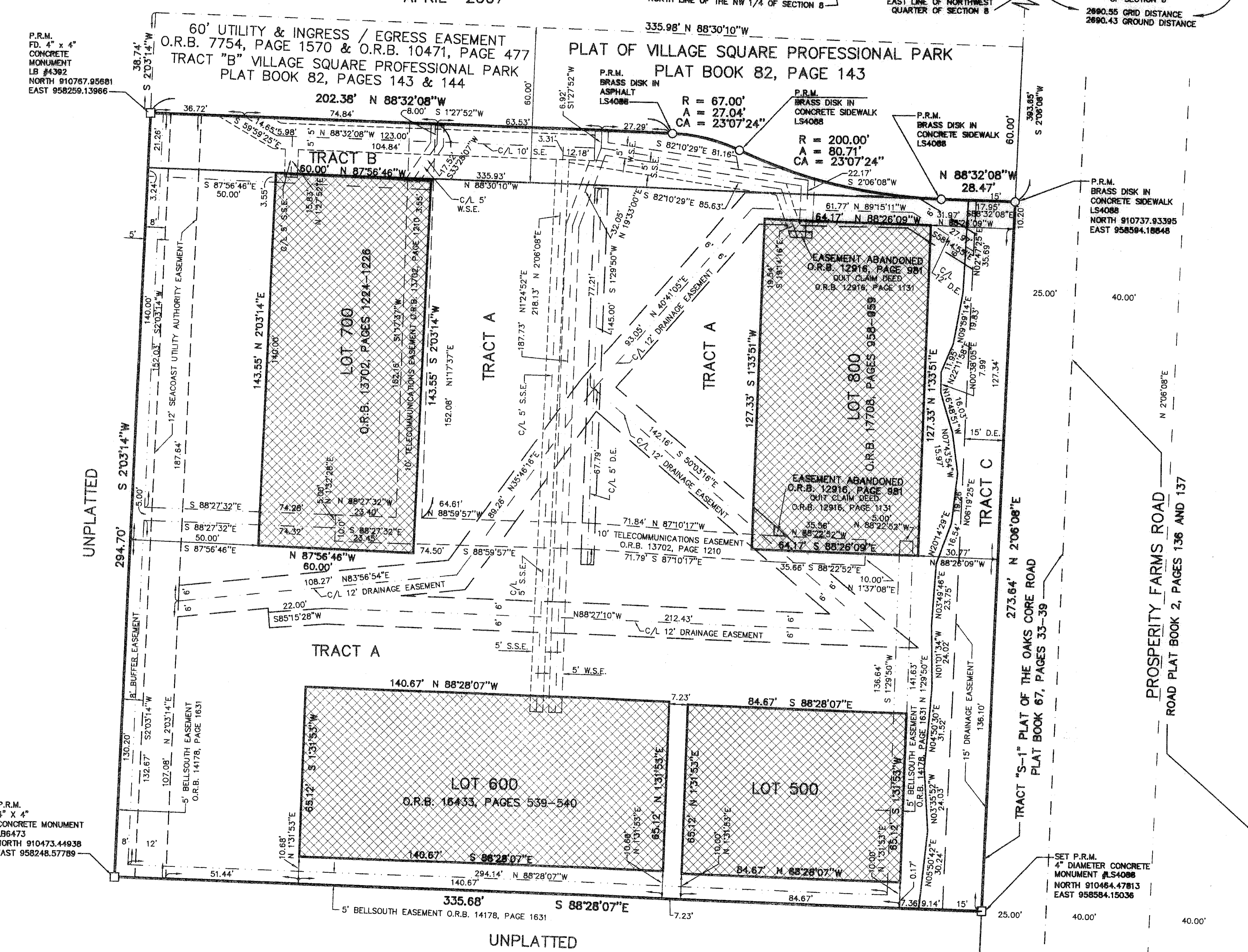
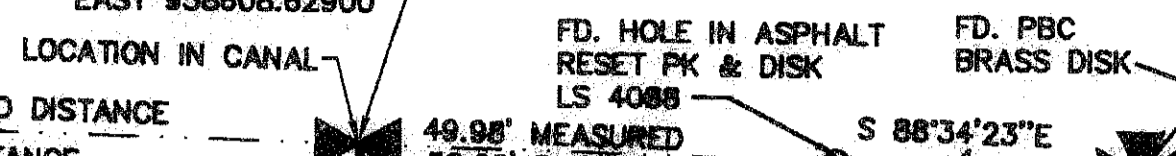
BEING A REPLAT OF VILLAGE SQUARE PLAT NO. 2, ACCORDING TO THE PLAT THEREOF, AS RECORDED IN PLAT BOOK 90, PAGES 190 AND 191 OF THE PUBLIC RECORDS OF PALM BEACH COUNTY, FLORIDA LYING IN SECTION 8, TOWNSHIP 42 SOUTH, RANGE 43 EAST, WITHIN THE CITY OF PALM BEACH GARDENS, PALM BEACH COUNTY, FLORIDA

APRIL 2007

NORTH 911200.0600
EAST 955919.50600



NORTH 911131.31900
EAST 958608.62900



P.R.M.
FD. 4" x 4"
CONCRETE
MONUMENT
LB #4382
NORTH 910767.95681
EAST 958259.13966

60' UTILITY & INGRESS / EGRESS EASEMENT
O.R.B. 7754, PAGE 1570 & O.R.B. 10471, PAGE 477
TRACT "B" VILLAGE SQUARE PROFESSIONAL PARK
PLAT BOOK 82, PAGES 143 & 144

PLAT OF VILLAGE SQUARE PROFESSIONAL PARK
PLAT BOOK 82, PAGE 143

R = 67.00'
A = 27.04'
CA = 23°07'24"

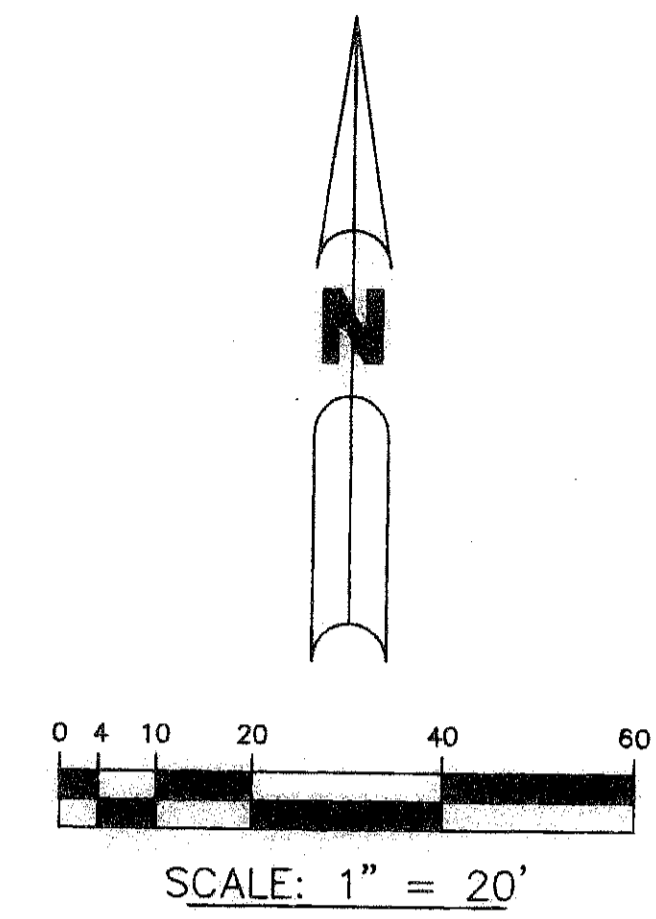
R = 200.00'
A = 80.71'
CA = 23°07'24"

P.R.M.
BRASS DISK IN
CONCRETE SIDEWALK
LS4088
NORTH 910737.93395
EAST 958584.18848

P.R.M.
4" x 4"
CONCRETE MONUMENT
LB#473
NORTH 910473.44938
EAST 958248.57789

SET P.R.M.
4" DIAMETER CONCRETE
MONUMENT #LS4088
NORTH 910484.47813
EAST 958584.15036

201
I, SHARON R. BOCK, CLERK & COMPTROLLER OF THE CIRCUIT COURT OF PALM BEACH COUNTY, FLORIDA, HEREBY CERTIFY THAT THIS PLAT WAS FILED FOR RECORD IN PLAT BOOK _____ PALM BEACH COUNTY, FLORIDA, PUBLIC RECORDS, THIS _____ DAY OF _____ 2007.
SHARON R. BOCK, CLERK & COMPTROLLER OF THE CIRCUIT COURT, PALM BEACH COUNTY, FLORIDA
BY: _____
DEPUTY CLERK



- LEGEND:**
- P.R.M. = PERMANENT REFERENCE MONUMENTS
 - O.R.B. = OFFICIAL RECORD BOOK
 - C/L = CENTERLINE
 - R = RADIUS
 - A = ARC DISTANCE
 - CA = CENTRAL ANGLE
 - D.E. = DRAINAGE EASEMENT
 - S.S.E. = SANITARY SERVICE EASEMENT
 - S.E. = SANITARY EASEMENT
 - W.S.E. = WATER SERVICE EASEMENT
 - P.K. = PARKER KALON NAIL
 - B & P = BROWN & PHILLIPS
 - FD. = FOUND
 - P.B.C. = PALM BEACH COUNTY

STATE PLANE COORDINATE DATA
COORDINATES SHOWN ARE GRID
LINEAR UNIT = US SURVEY FOOT
ZONE = FLORIDA EAST
ALL DISTANCES ARE GROUND
DATUM = NAD 83, 1990 ADJUSTED
SCALE FACTOR = 1.0000460
GROUND DISTANCE X SCALE FACTOR = GRID DISTANCE
1983 STATE PLANE TRAVERSE MERCATOR PROJECTION

"NOTICE: THIS PLAT, AS RECORDED IN ITS GRAPHIC FORM, IS THE ORIGINAL DEPICTION OF THE SUBDIVIDED LANDS DESCRIBED HEREIN AND WILL IN NO CIRCUMSTANCES BE SUPPLANTED IN AUTHORITY BY ANY OTHER GRAPHIC OR DIGITAL FORM OF THE PLAT. THERE MAY BE ADDITIONAL RESTRICTIONS THAT ARE NOT RECORDED ON THIS PLAT THAT MAY BE FOUND IN THE PUBLIC RECORDS OF THE COUNTY."

THE BEARINGS ARE BASED ON THE NORTH SECTION LINE OF THE NW 1/4 OF SECTION 8, TOWNSHIP 42 SOUTH, RANGE 43 EAST, PALM BEACH COUNTY, FLORIDA BEARING SOUTH 88°32'08" EAST, ACCORDING TO THE NORTH AMERICAN DATUM OF 1983, AND READJUSTED IN 1990, AS COMPUTED ON THE FLORIDA STATE PLANE COORDINATE SYSTEM.

NO BUILDINGS, IMPROVEMENTS OF ANY KIND, TREES OR SHRUBS SHALL BE PLACED ON ANY EASEMENT WITHOUT PRIOR WRITTEN APPROVAL OF ALL EASEMENT BENEFICIARIES AND ALL APPLICABLE CITY OR COUNTY APPROVALS OR PERMITS AS REQUIRED FOR SUCH ENCROACHMENTS.

THIS INSTRUMENT WAS PREPARED BY JAY ALAN BONNER, LS4088
IN THE OFFICE OF SUNSHINE SURVEYORS,
7502 159th COURT NORTH, PALM BEACH GARDENS, FLORIDA 33418

SUNSHINE SURVEYORS
PO Box 31224 (LB4725)
Palm Beach Gardens
Florida 33420-1224

SHEET
3 OF 3