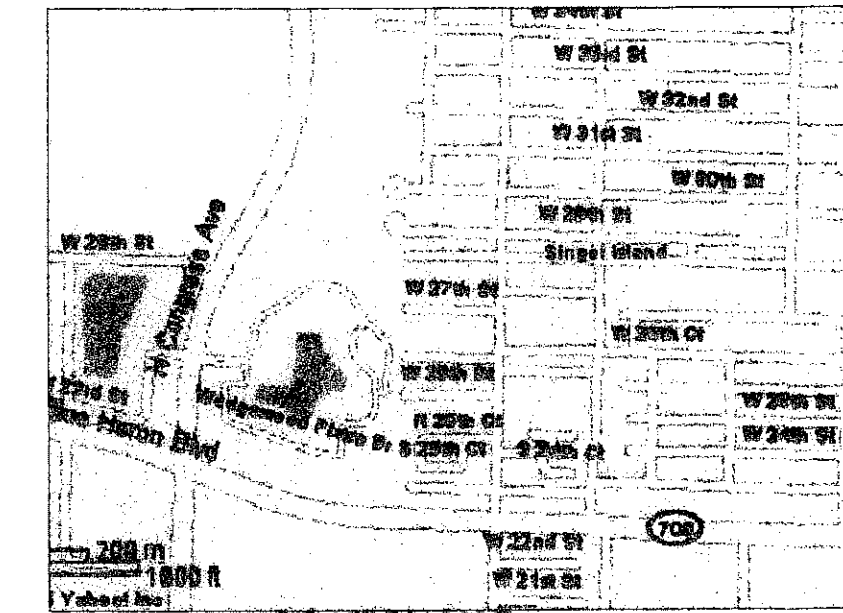


BROOK'S SUBDIVISION PLAT

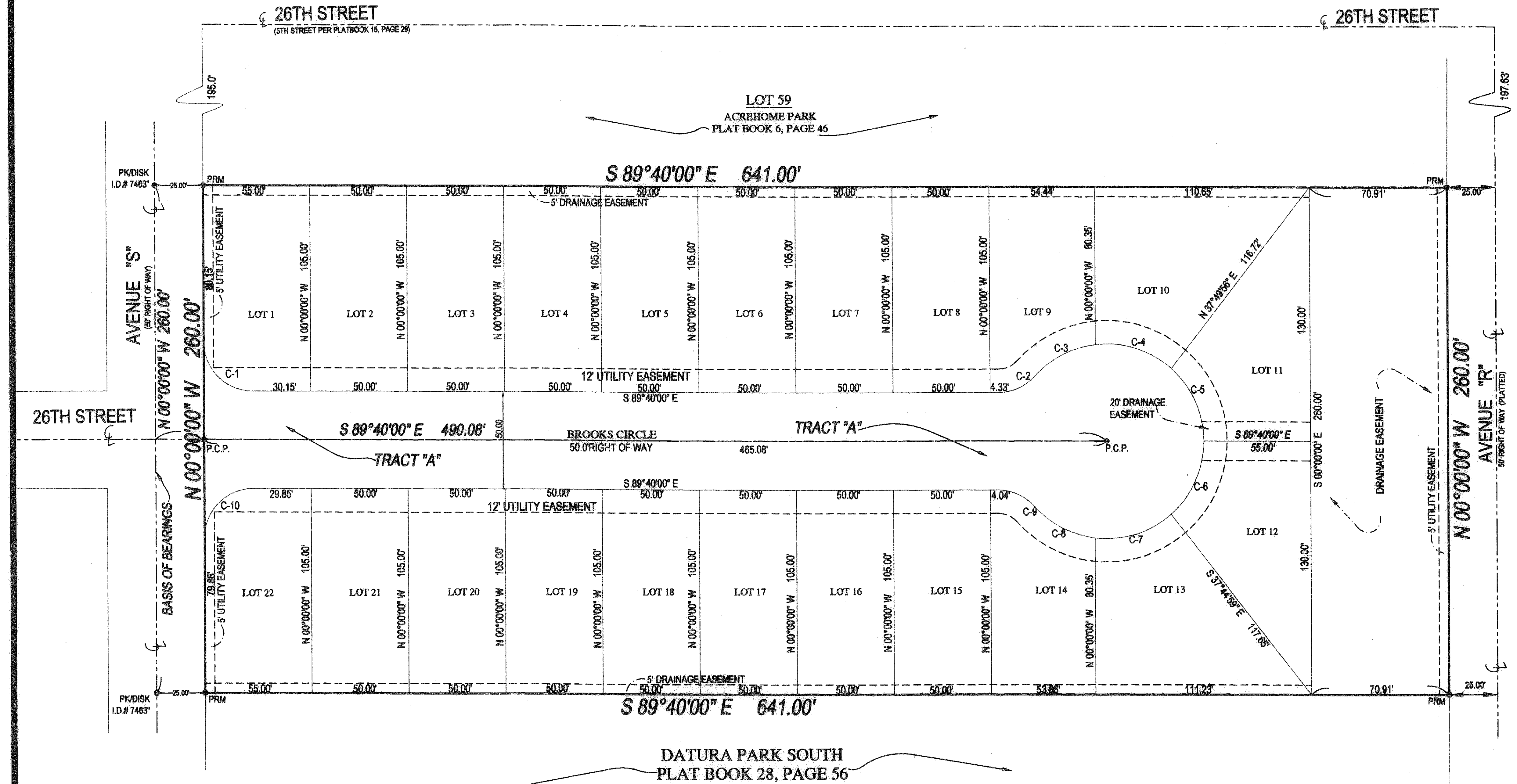
BEING A REPLAT OF LOTS 60-63 OF ACREHOME PARK
IN SECTION 29, TOWNSHIP 42 SOUTH, RANGE 43 EAST
RIVIERA BEACH, FLORIDA

SHEET 2 OF 2
MAY 2007



2

COUNTY OF PALM BEACH
STATE OF FLORIDA
THIS PLAT WAS FILED FOR RECORD AT ____ M.
THIS ____ DAY OF ____
A.D. 2007 AND DULY RECORDED IN PLAT BOOK
NO. ____ PAGES ____ THRU ____
SHARON R. BOCK
CLERK AND COMPTROLLER
BY: _____ D.C.



- Legend:**
- BM = BENCH MARK
 - CL = CENTER LINE
 - CM = CONCRETE MONUMENT
 - DE = DRAINAGE EASEMENT
 - DH = DRILL HOLE
 - E = EAST
 - EL = ELEVATION
 - F = FOUND
 - FH = FIRE HYDRANT
 - L = LENGTH OF CURVE
 - N = NORTH
 - ORB. = OFFICIAL RECORD BOOK
 - PB. = PLAT BOOK
 - PC = POINT OF CURVE
 - PCP = PERMANENT CONTROL POINT
 - PG. = PAGE
 - POB = POINT OF BEGINNING
 - POC = POINT OF COMMENCEMENT
 - PRM = PERMANENT REFERENCE MONUMENT
 - PSM = PROFESSIONAL SURVEYOR & MAPPER
 - R = RADIUS
 - RM = REFERENCE MONUMENT
 - S = SOUTH
 - UE = UTILITY EASEMENT
 - W = WEST
 - Δ = CENTRAL ANGLE



CURVE TABLE

CURVE	RADIUS	DELTA	LENGTH	TANGENT
C-1	25.00'	89°40'00"	39.12'	24.85'
C-2	25.00'	48°11'23"	21.03'	11.18'
C-3	50.00'	41°22'13"	36.10'	18.88'
C-4	50.00'	48°24'35"	42.24'	22.48'
C-5	50.00'	48°24'35"	42.24'	22.48'
C-6	50.00'	48°24'35"	42.24'	22.48'
C-7	50.00'	48°24'35"	42.24'	22.48'
C-8	50.00'	41°22'13"	36.10'	18.88'
C-9	25.00'	48°11'23"	21.03'	11.18'
C-10	25.00'	90°20'00"	39.42'	25.15'

SURVEYOR'S NOTES:

1. PINS DENOTED T1A-B ; ARE 4"x4" CONCRETE MONUMENTS WITH DISK STAMPS FROM L&M 7463
2. ALL DIMENSIONS REFER TO THE HORIZONTAL PLANE AND ARE IN ACCORDANCE WITH THE DEFINITION OF THE UNITED STATES SURVEY FOOT ADOPTED BY THE NATIONAL INSTITUTE OF STANDARDS AND TECHNOLOGY
3. THE BEARINGS SHOWN HEREON ARE BASED UPON THE CENTERLINE OF AVENUE 'S', ASSUMED TO BEAR N 00°00'00" W.
4. WHEN EASEMENTS OVERLAP DRAINAGE EASEMENTS HAVE FIRST PRIORITY AND UTILITY EASEMENTS HAVE SECONDARY PRIORITY.

NOTICE:
THIS PLAT, AS RECORDED IN ITS GRAPHIC FORM, IS THE OFFICIAL DEPICTION OF THE SUBDIVIDED LANDS DESCRIBED HEREIN AND SHALL, IN NO CIRCUMSTANCES, BE SUPPLANTED IN AUTHORITY BY ANY OTHER GRAPHIC OR DIGITAL FORM OF THIS PLAT.
THERE MAY BE ADDITIONAL RESTRICTIONS THAT ARE NOT RECORDED ON THIS PLAT THAT MAY BE FOUND IN THE PUBLIC RECORDS OF THIS COUNTY.

SEAL SEAL SEAL SEAL SEAL SEAL SEAL

COMPASS SURVEYING
2096 EL CAMINO REAL
WEST PALM BEACH, FL 33409
PHONE: 561.640.4277
FAX: 561.640.4261
THIS INSTRUMENT PREPARED BY:
JUSTIN S. DAINBERG, L.S.
5901 CORPORATE WAY
SUITE 200
WEST PALM BEACH, FLORIDA 33417
LS #7463