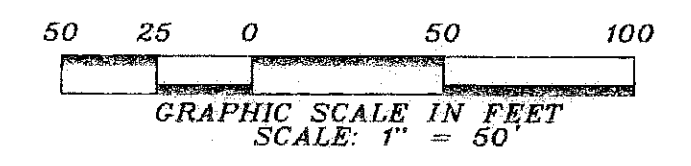


GARDENS POINTE

BEING A REPLAT OF PARCEL 27.09 AND A PORTION OF PARCEL 27.13, AS SHOWN ON THE PLAT OF REGIONAL CENTER PARCELS 27.09, 27.13 AND WATER MANAGEMENT TRACT 3-B, RECORDED IN PLAT BOOK 90, PAGES 199 THROUGH 201, PUBLIC RECORDS OF PALM BEACH COUNTY, FLORIDA, SITUATE IN SECTION 6, TOWNSHIP 42 SOUTH, RANGE 43 EAST, CITY OF PALM BEACH GARDENS, PALM BEACH COUNTY, FLORIDA
 NOVEMBER, 2007 SHEET 2 OF 3

13

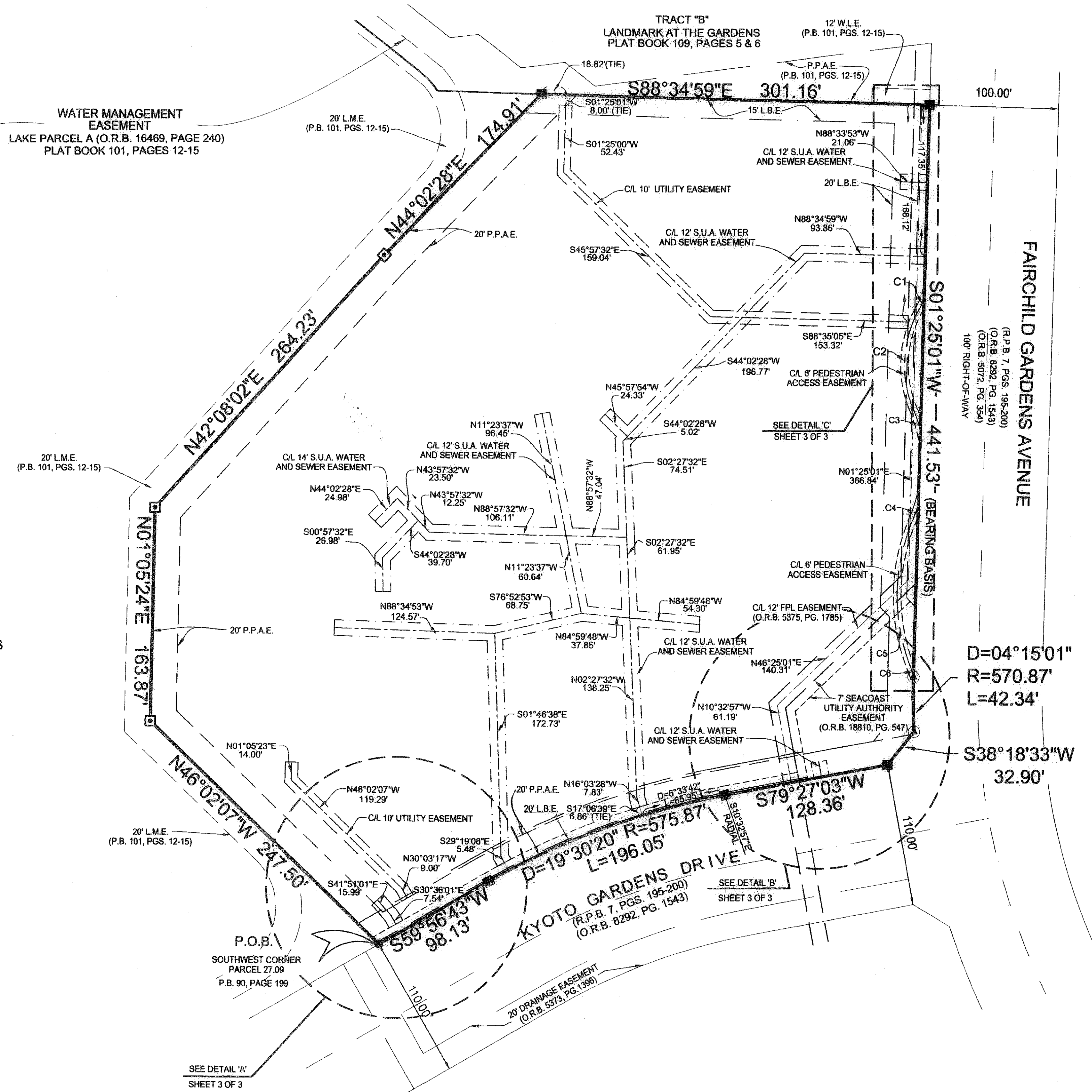
STATE OF FLORIDA
 COUNTY OF PALM BEACH
 This plat was filed for record at _____ H. this day of _____, 2007 and duly recorded in Plat Book No. _____ on Pages _____ thru _____
 Sharon H. Bock
 Clerk and Comptroller
 By _____ D.C.



WATER MANAGEMENT EASEMENT
 LAKE PARCEL A (O.R.B. 16469, PAGE 240)
 PLAT BOOK 101, PAGES 12-15

TRACT "A"
 DOWNTOWN AT THE GARDENS
 AND LANDMARK
 PLAT BOOK 101, PAGES 12-15

ABBREVIATIONS:
 FPL = FLORIDA POWER & LIGHT
 L.B.E. = LANDSCAPE BUFFER EASEMENT
 L.M.E. = LAKE MAINTENANCE EASEMENT
 (M) = MEASURED
 O.R.B. = OFFICIAL RECORDS BOOK
 P.B. = PLAT BOOK
 PG. = PAGE
 P.O.B. = POINT OF BEGINNING
 P.P.A.E. = PERPETUAL PUBLIC ACCESS EASEMENT
 W.L.E. = WATER LINE EASEMENT



CURVE TABLE				
CURVE	LENGTH	RADIUS	DELTA	CHORD BEARING
C1	8.09	53.00	8°44'25"	N 25°35'07" E
C2	80.98	87.00	53°19'47"	S 03°17'27" W
C3	16.95	107.00	9°04'28"	N 18°50'13" W
C4	11.79	107.00	6°18'45"	N 20°17'23" E
C5	119.47	147.00	46°34'01"	S 00°09'45" W
C6	3.28	53.00	3°32'30"	N 21°21'00" W

D=04°15'01"
 R=570.87'
 L=42.34'

D=19°30'20" R=575.87'
 L=196.05'

LIDBERG LAND SURVEYING, Inc.
 875 West Indianholm Road, Suite 200
 Jupiter, Florida 33458 TEL: 561-746-3454
 LB 4431

CAD K:\AUTOCAD2000\064243\02-227\dwg\02-227-306B.DWG				
REF				
PLD	FB	FC	JOB 02-227 (306B)	
OFF	J.K.O.		DATE 07/28/2007	
CKD	D.C.L.	SHEET 2 OF 3	DWG 002-227PP	