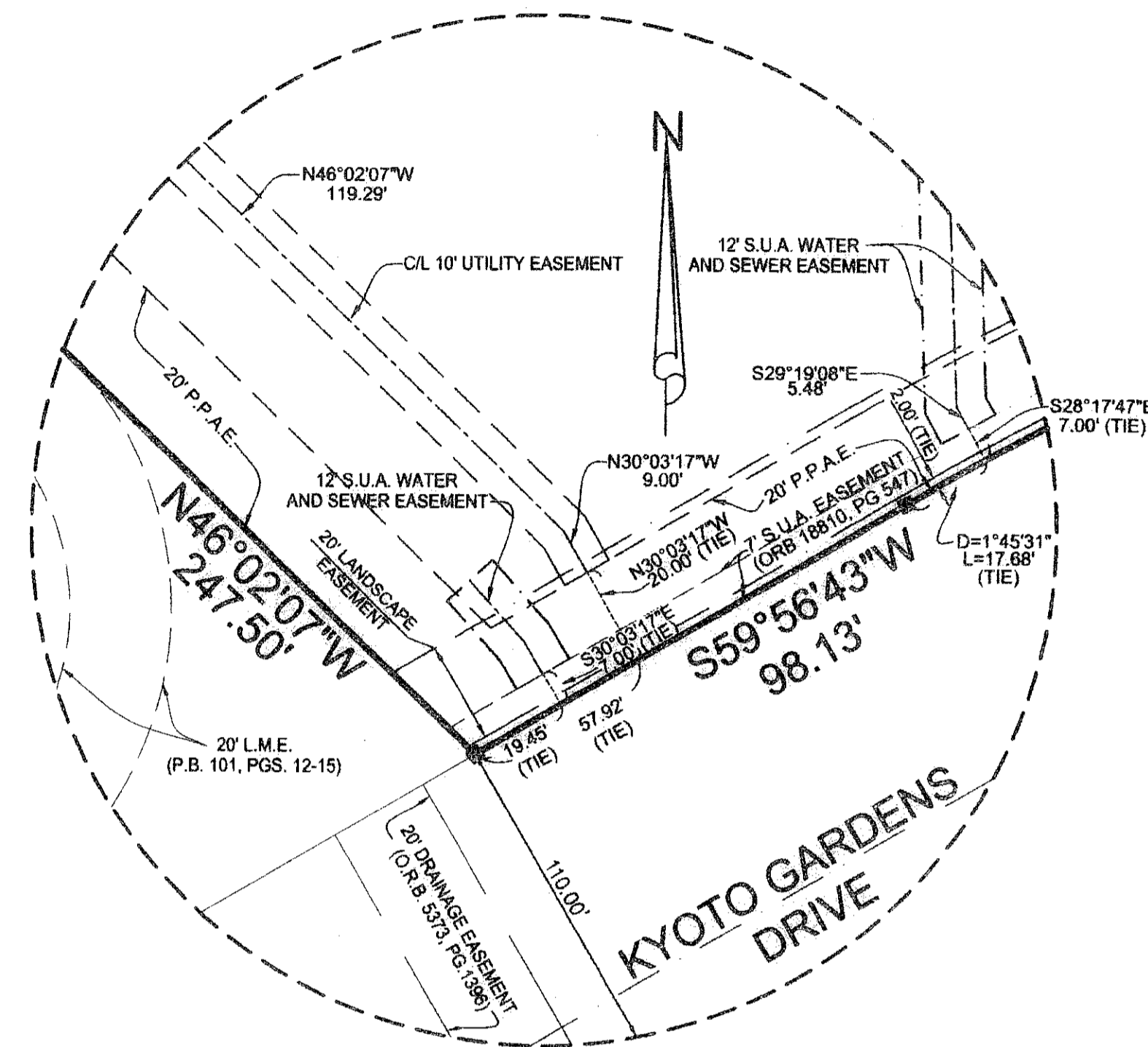


GARDENS POINTE

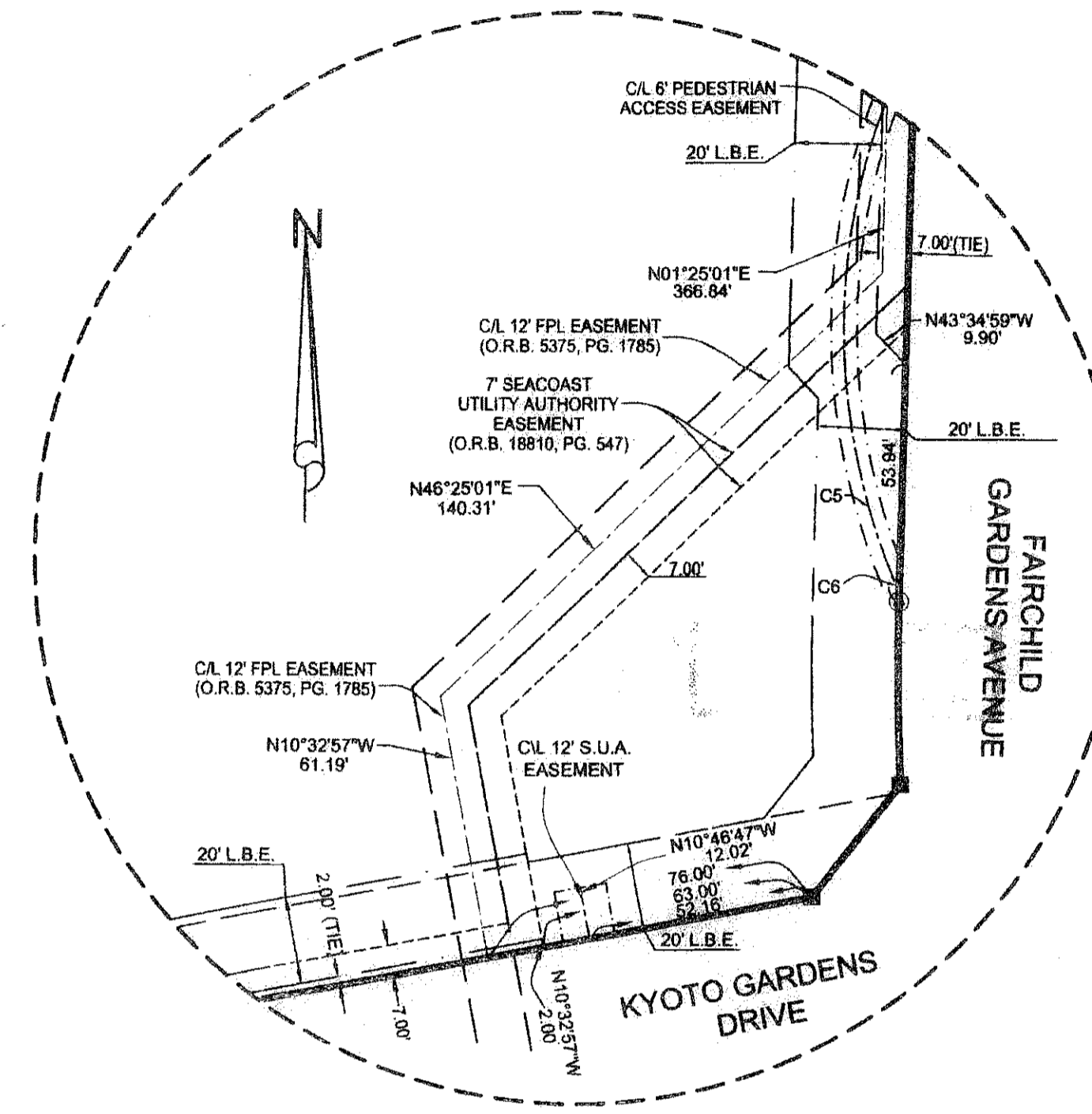
BEING A REPLAT OF PARCEL 27.09 AND A PORTION OF PARCEL 27.13, AS SHOWN ON THE PLAT OF REGIONAL CENTER PARCELS 27.09, 27.13 AND WATER MANAGEMENT TRACT 3-B, RECORDED IN PLAT BOOK 90, PAGES 199 THROUGH 201, PUBLIC RECORDS OF PALM BEACH COUNTY, FLORIDA, SITUATE IN SECTION 6, TOWNSHIP 42 SOUTH, RANGE 43 EAST, CITY OF PALM BEACH GARDENS, PALM BEACH COUNTY, FLORIDA
 NOVEMBER, 2007 SHEET 3 OF 3

14

STATE OF FLORIDA
 COUNTY OF PALM BEACH
 This plat was filed for record at _____ M. this day of _____, 2007 and duly recorded in Plat Book No. _____ on Pages _____ thru _____.
 Sharon R. Neck
 Clerk and Comptroller
 By _____ D.C.

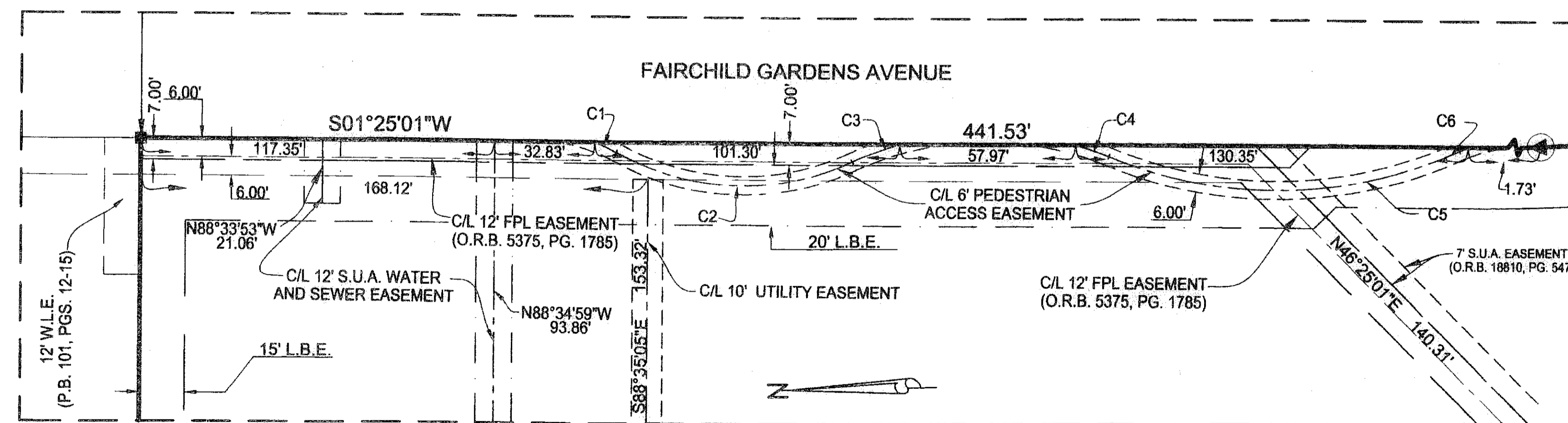


DETAIL 'A'
 NOT TO SCALE



DETAIL 'B'
 NOT TO SCALE

CURVE TABLE				
CURVE	LENGTH	RADIUS	DELTA	CHORD BEARING
C1	8.09	53.00	8°44'25"	N25°35'07"E
C2	80.98	87.00	53°19'47"	S03°17'27"W
C3	16.95	107.00	9°04'28"	N18°50'13"W
C4	11.79	107.00	6°18'45"	N20°17'23"E
C5	119.47	147.00	46°34'01"	S00°09'45"W
C6	3.28	53.00	3°32'30"	N21°21'00"W



DETAIL 'C'
 SCALE: 1" = 30'

LIDBERG LAND SURVEYING, INC.
 875 West Indian Town Road, Suite 200, Jupiter, Florida 33458 TEL 561-746-8454
 LB 4431

CAD K:\AUTOCAD2000\064243\02-227\DWG\02-227-306B.DWG			
REF			
FLD	FB	PC	JOB 02-227 (306B)
OFF J.K.O.			DATE 07/28/2007
CKD D.C.L	SHEET 3	OF 3	DWC D02-227PP