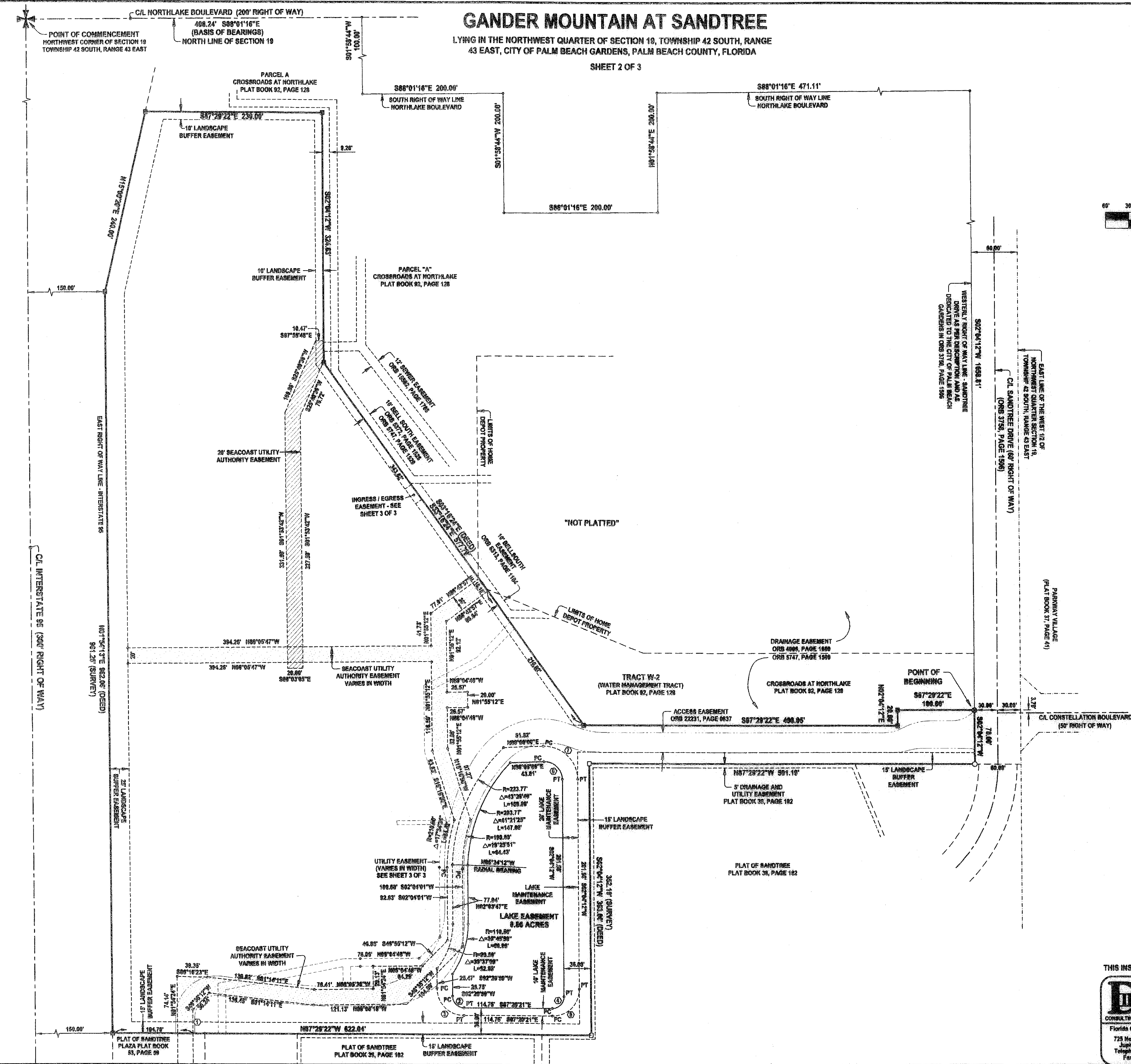
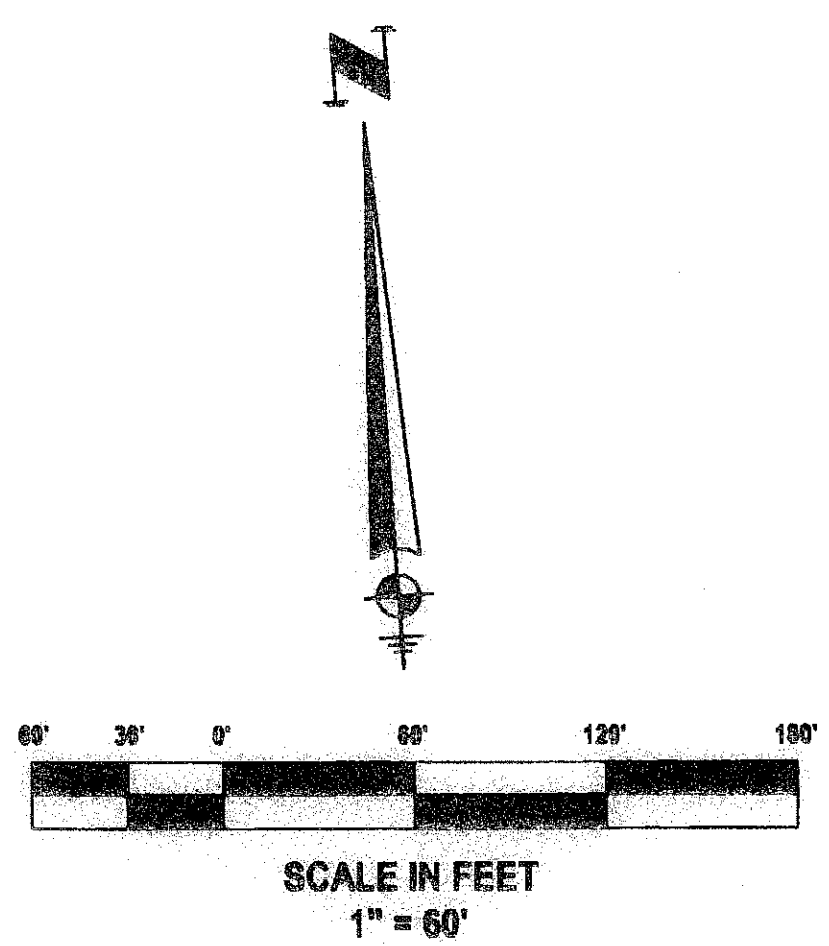


GANDER MOUNTAIN AT SANDTREE

LYING IN THE NORTHWEST QUARTER OF SECTION 10, TOWNSHIP 42 SOUTH, RANGE 43 EAST, CITY OF PALM BEACH GARDENS, PALM BEACH COUNTY, FLORIDA

SHEET 2 OF 3



LINE & CURVE DATA

#	LENGTH	BEARING
1	31.33'	N01°54'24"E
2	R=15.00' Δ=89°59'58" L=23.56'	
3	R=35.00' Δ=89°59'20" L=54.97'	
4	R=15.00' Δ=90°26'27" L=23.68'	
5	R=35.00' Δ=90°26'27" L=55.25'	
6	R=23.00' Δ=92°04'12" L=36.96'	
7	R=43.00' Δ=92°04'12" L=69.10'	

THIS INSTRUMENT WAS PREPARED BY DONALD D. DANIELS IN THE OFFICES OF DONALD D. DANIELS, INC.

<p>D DONALD D. DANIELS, INC. CONSULTING SURVEYORS & MAPPERS Florida Certificate LR No. 4165 725 North A1A, Suite C-111 Jupiter, Florida 33477 Telephone: (561) 747-9894 Fax: (561) 747-9895</p>	GANDER MOUNTAIN AT SANDTREE		SCALE: 1"=60"
	REFERENCE: 18/42/43	REVISIONS: 12/21/07 - Address Comments	DWG. NUMBER: 04-119-10
	OFFICE: DAO	CHECKED:	SHEET 2 OF 3