

GARDENS COMMERCE CENTER

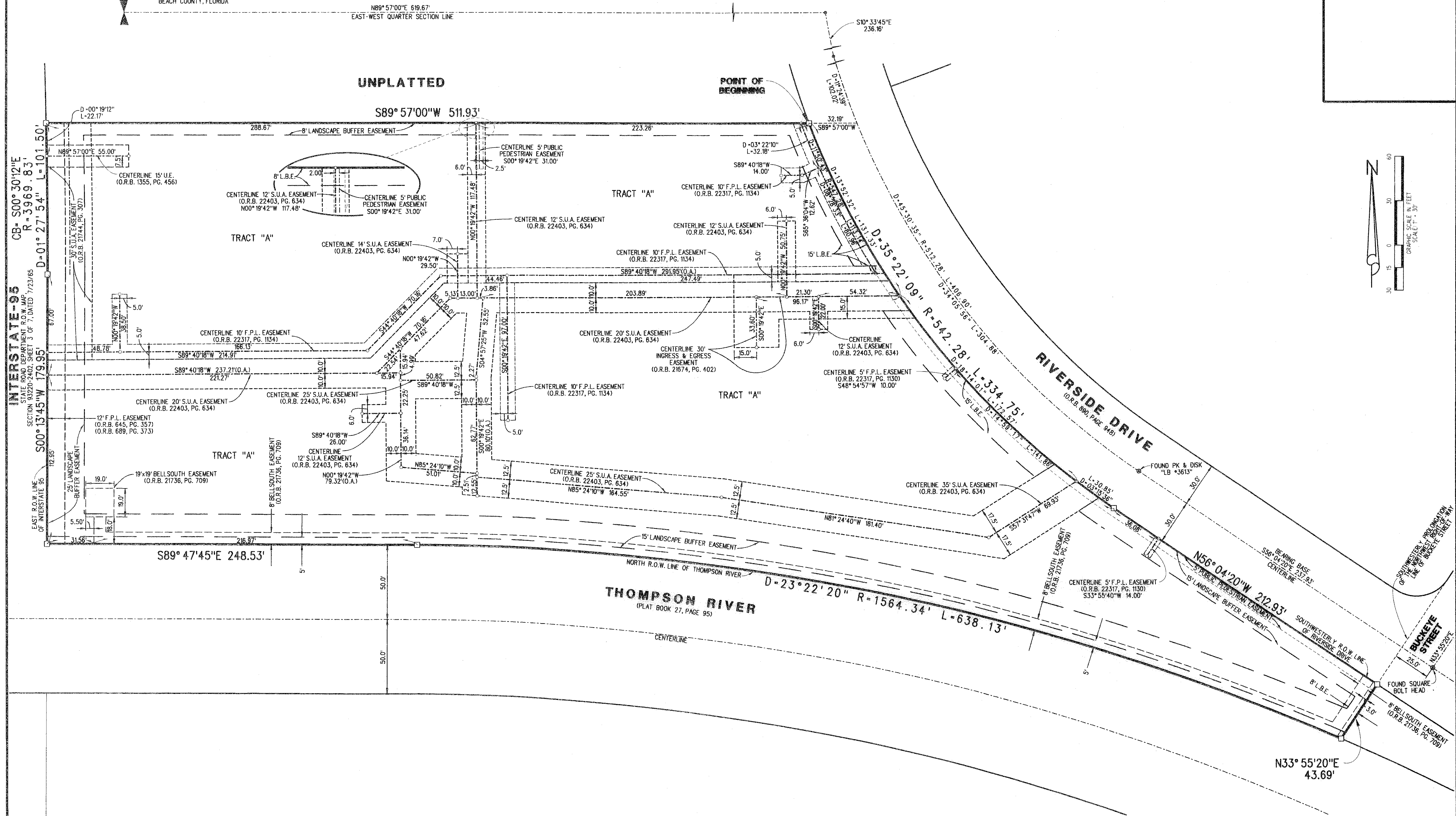
A PARCEL OF LAND LYING IN SECTION 7, TOWNSHIP 42 SOUTH,
RANGE 43 EAST, CITY OF PALM BEACH GARDENS, PALM BEACH COUNTY, FLORIDA

JANUARY, 2008

SHEET 2 OF 2

36

POINT OF COMMENCEMENT
WEST QUARTER CORNER
SECTION 7, TOWNSHIP 42 SOUTH,
RANGE 43 EAST, PALM
BEACH COUNTY, FLORIDA



INTERSTATE-95
STATE ROAD DEPARTMENT FLOW MARK
SECTION 7, TOWNSHIP 42 SOUTH, RANGE 43 EAST, PALM BEACH COUNTY, FLORIDA
D=0-01°27'54" L=101.50'
D=0-01°27'54" L=101.50'
D=0-01°27'54" L=101.50'
D=0-01°27'54" L=101.50'

LIDBERG LAND SURVEYING, INC.		CAD. K:\JUST \ 074243 \ 06-180 \ 06-180306 \ 06-180306.DGN	
75 West Indiantown Road, Suite 200, Jupiter, Florida 33458 TEL. 561-746-8454		REF.	
FLD.	FB. PG.	JOB	06-180-306
OFF. R.J.W.		DATE	03/19/07
CKD. D.C.L.	SHEET 2 OF 2	DWG.	DOB-180P

K:\just\074243\06-180\06-180306\06-180306.dgn 2/5/2008 1:53:46 PM