

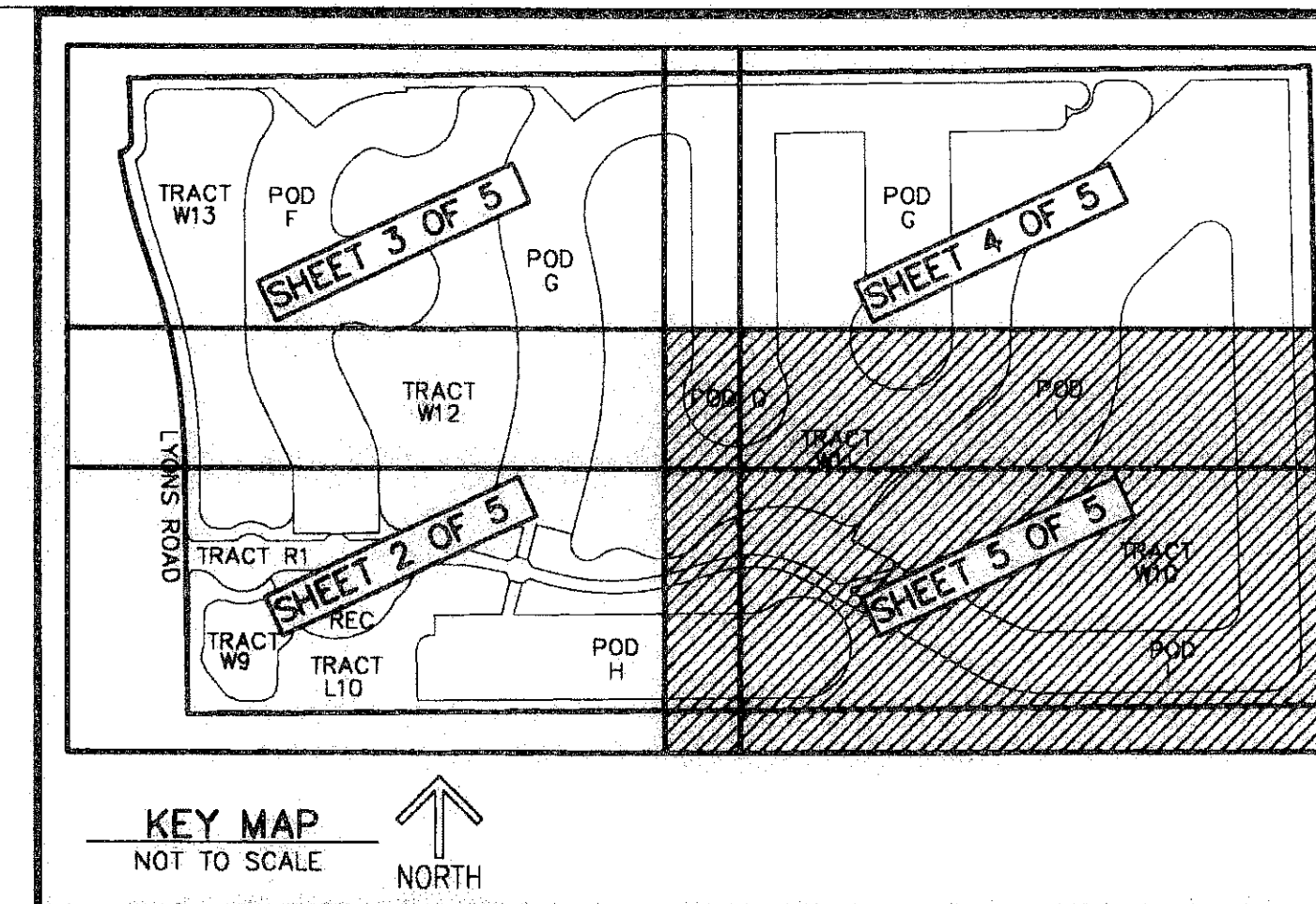
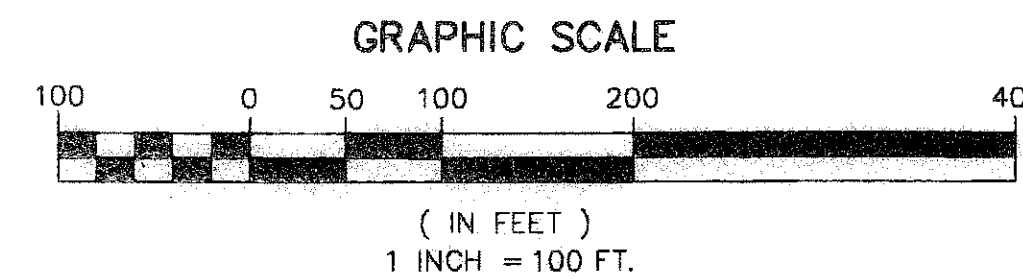
APPOLONIA FARMS P.U.D. PLAT ONE

A REPLAT OF A PORTION OF BLOCKS 70 AND 71, PALM BEACH FARMS COMPANY PLAT NO. 3, AS RECORDED IN PLAT BOOK 2, PAGES 45 THROUGH 54 OF THE PUBLIC RECORDS OF PALM BEACH COUNTY, FLORIDA, LYING IN SECTION 32, TOWNSHIP 46 SOUTH, RANGE 42 EAST, PALM BEACH COUNTY, FLORIDA

THIS INSTRUMENT PREPARED BY
DAVID P. LINDLEY
OF
CAULFIELD and WHEELER, INC.
SURVEYORS - ENGINEERS - PLANNERS
7301-A WEST PALMETTO PARK ROAD, SUITE 100A
BOCA RATON, FLORIDA 33433 -- (561)392-1991
NOVEMBER - 2006

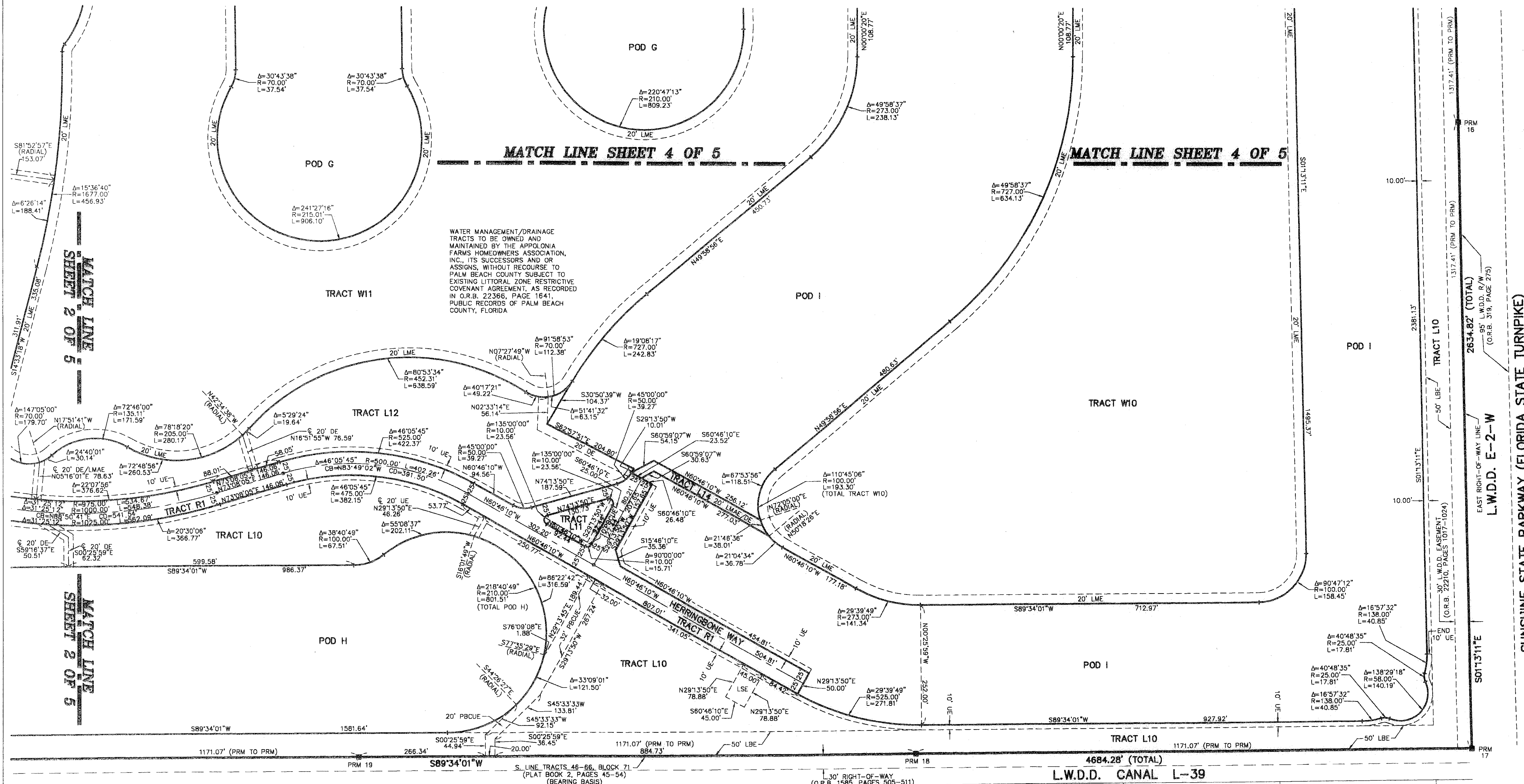
NOTES COORDINATES, BEARINGS AND DISTANCES

COORDINATES SHOWN ARE GRID
DATUM = NAD 83 1990 ADJUSTMENT
ZONE = FLORIDA EAST
LINEAR UNIT = US SURVEY FEET
COORDINATE SYSTEM 1983 STATE PLANE
TRANSVERSE MERCATOR PROJECTION
ALL DISTANCES ARE GROUND
SCALE FACTOR = 1.0000238
GROUND DISTANCE X SCALE FACTOR = GRID DISTANCE
BEARINGS AS SHOWN HEREON ARE GRID DATUM,
NAD 83 1990 ADJUSTMENT, FLORIDA EAST ZONE.



STATE OF FLORIDA
COUNTY OF PALM BEACH
THIS PLAT WAS FILED FOR
RECORD AT _____ M.
THIS _____ DAY OF _____
A.D. 2006 AND DULY RECORDED
IN PLAT BOOK _____ ON
PAGES _____ AND _____
SHARON R. BOCK
CLERK AND COMPTROLLER

BY: _____
DEPUTY CLERK



WATER MANAGEMENT/DRAINAGE TRACTS TO BE OWNED AND MAINTAINED BY THE APPOLONIA FARMS HOMEOWNERS ASSOCIATION, INC., ITS SUCCESSORS AND OR ASSIGNS, WITHOUT RECOURSE TO PALM BEACH COUNTY SUBJECT TO EXISTING LITTORAL ZONE RESTRICTIVE COVENANT AGREEMENT, AS RECORDED IN O.R.B. 22366, PAGE 1641, PUBLIC RECORDS OF PALM BEACH COUNTY, FLORIDA

SUNSHINE STATE PARKWAY (FLORIDA STATE TURNPIKE)
EAST RIGHT-OF-WAY LINE
L.W.D.D. E-2-W
(O.R.B. 1585, PAGES 505-511)

TRACT L10
2634.82' (TOTAL)
95' L.W.D.D. R/W
(O.R.B. 319, PAGE 275)

TRACT L10
4684.28' (TOTAL)
L.W.D.D. CANAL L-39

70	69	68	67	BLOCK 71 PALM BEACH FARMS COMPANY PLAT NO. 3 (PLAT BOOK 2, PAGES 45-54)	65	64	63	62
----	----	----	----	---	----	----	----	----