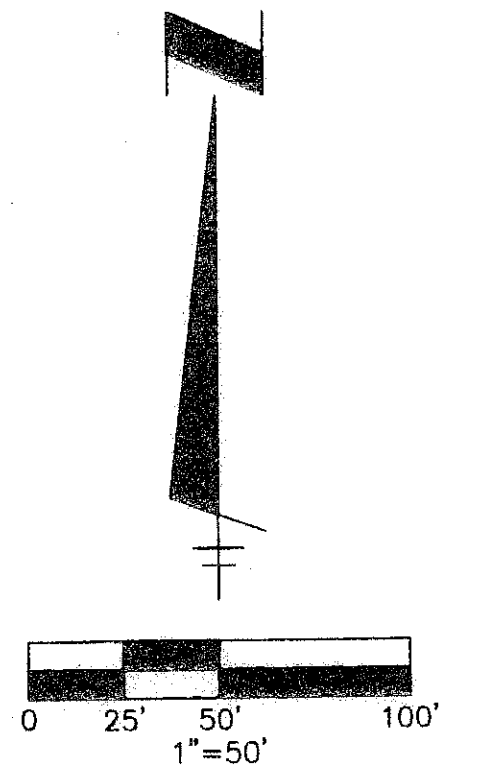
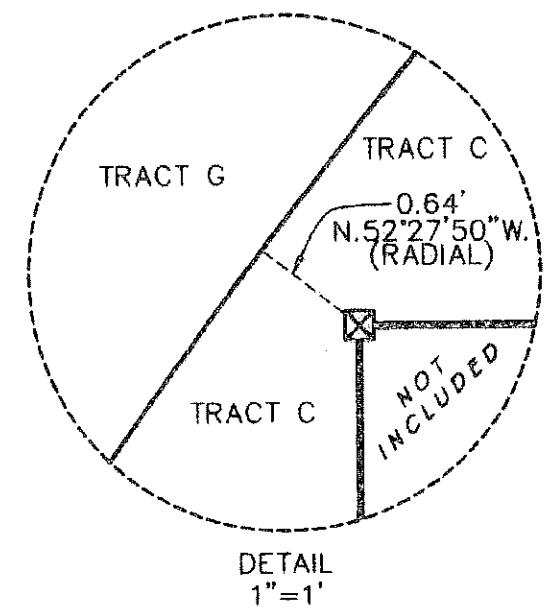
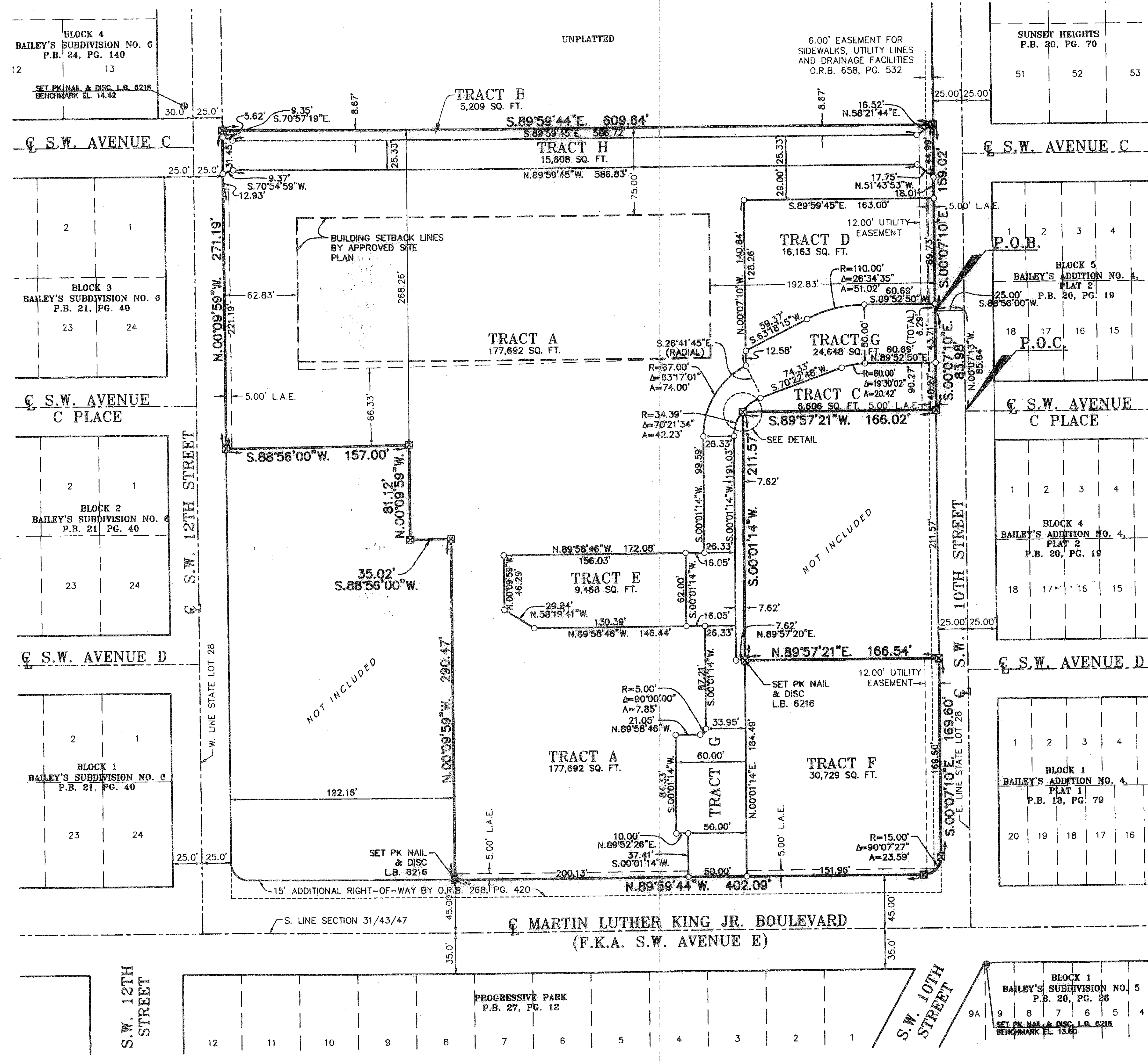


LOCATION MAP NOT TO SCALE

BELLE GLADE ALF

BEING A PORTION OF STATE LOT 28, SECTION 31, TOWNSHIP 43 SOUTH, RANGE 37 EAST, CITY OF BELLE GLADE, PALM BEACH COUNTY, FLORIDA
FEBRUARY, 2008
SHEET 2 OF 2



- LEGEND & ABBREVIATIONS:**
- CENTERLINE
 - F.K.A. FORMERLY KNOWN AS
 - L.B. LICENSED BUSINESS
 - L.A.E. LIMITED ACCESS EASEMENT
 - NO. NUMBER
 - O.R.B. OFFICIAL RECORD BOOK
 - P.G. PAGE
 - P.O.B. POINT OF BEGINNING
 - P.O.C. POINT OF COMMENCEMENT
 - ☒ PERMANENT REFERENCE MONUMENT
 - 4"x4" CONCRETE MONUMENT WITH BRASS DISC STAMPED L.B. 6216 UNLESS OTHERWISE NOTED
 - P.B. PLAT BOOK
 - 31/43/47 SECTION/TOWNSHIP/RANGE
 - ☉ IRON ROD & CAP; L.B. 6216
 - SQ. FT. SQUARE FEET

2008-087_PLAT

W.L.FISH & COMPANY
PROFESSIONAL SURVEYORS AND MAPPERS
5730 Corporate Way, Unit 100, West Palm Beach, Florida 33407
Phone: (561)615-9266 - Fax: (561)615-9270
E-mail: mappers@wlfish.com L.B. 6216

BLOCK 1
BAILEY'S SUBDIVISION NO. 5
P.B. 20, PG. 28
9A 9 8 7 6 5 4
SET PK NAIL & DISC L.B. 6216
BENCHMARK EL. 13.80