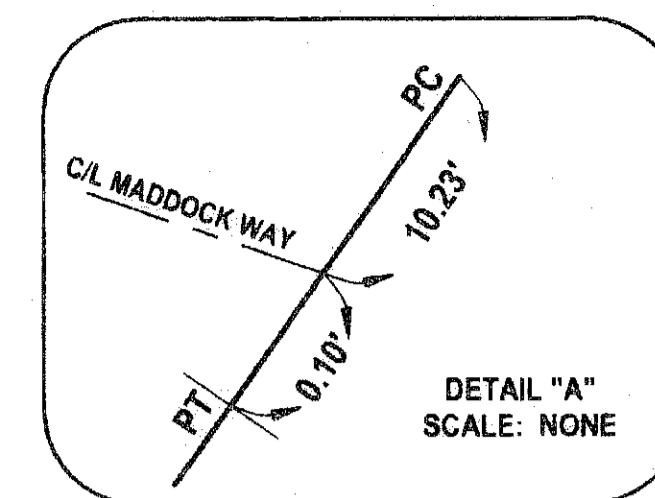
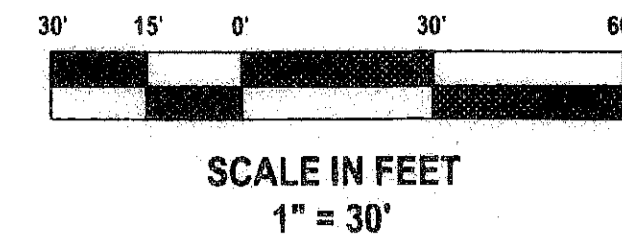


65

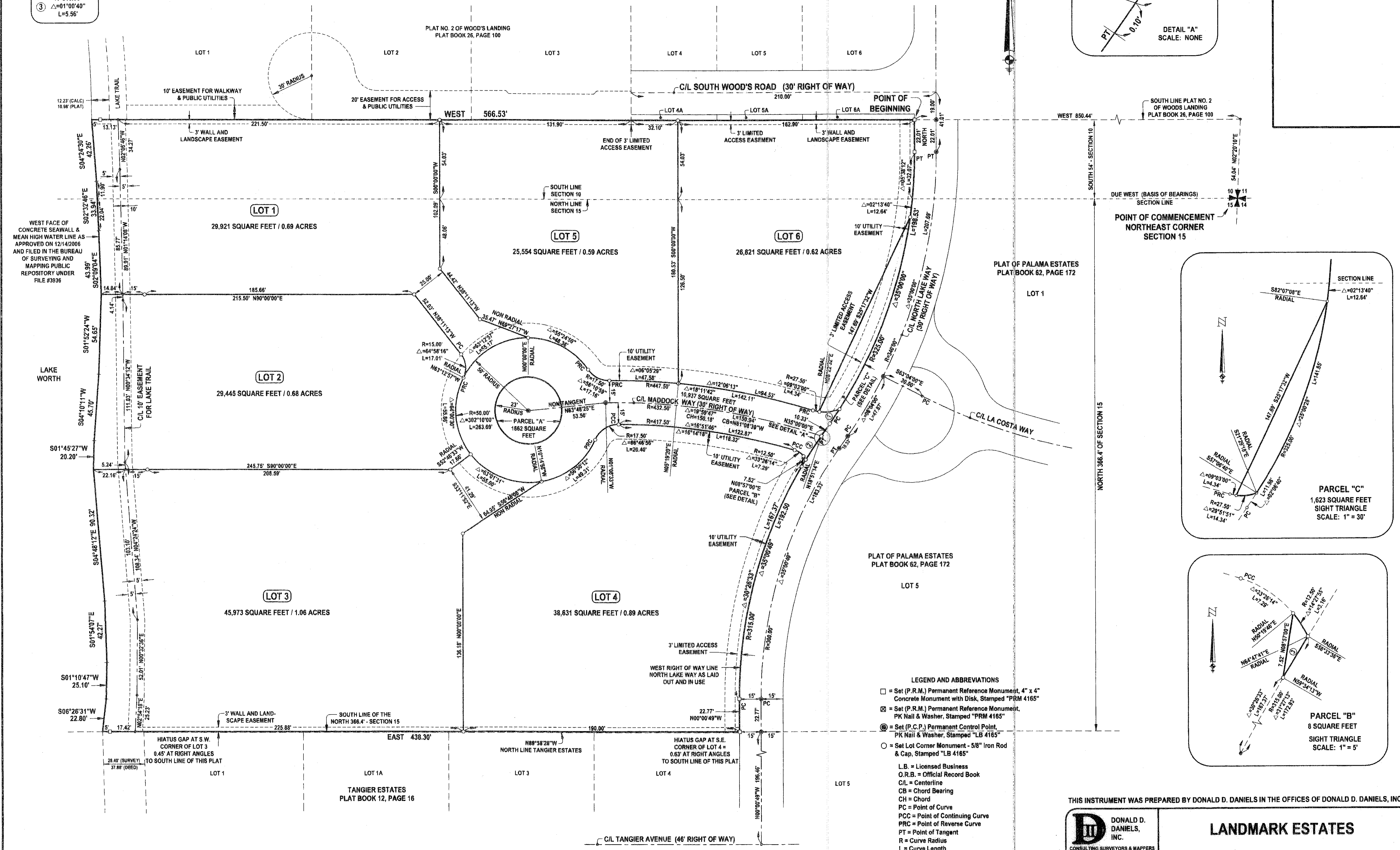
LANDMARK ESTATES

LYING IN THE TOWN OF PALM BEACH, FLORIDA BEING IN SECTIONS 10 AND 15,
TOWNSHIP 43 SOUTH, RANGE 43 EAST, PALM BEACH COUNTY, FLORIDA

SHEET 3 OF 3



CURVE DATA	
①	R=325.00' Δ=02°06'40" L=11.98'
②	R=315.00' Δ=03°33'33" L=19.57'
③	R=315.00' Δ=01°00'40" L=5.56'



THIS INSTRUMENT WAS PREPARED BY DONALD D. DANIELS IN THE OFFICES OF DONALD D. DANIELS, INC.

<p>DONALD D. DANIELS, INC. CONSULTING SURVEYORS & MAPPERS Florida Certificate LB No. 4165</p>	<p>REFERENCE: 10815/43/43</p>	<p>REVISIONS: 02/13/08 - Address Comments 03/24/08 - Address Comments</p>	<p>SCALE: 1"=30' DWG. NUMBER: 94-044.5 SHEET 3 OF 3</p>
	<p>OFFICE: DAO</p>	<p>CHECKED:</p>	
	<p>725 North A1A, Suite C-111 Jupiter, Florida 33477 Telephone: (561) 747-8894 Fax: (561) 747-8895</p>		