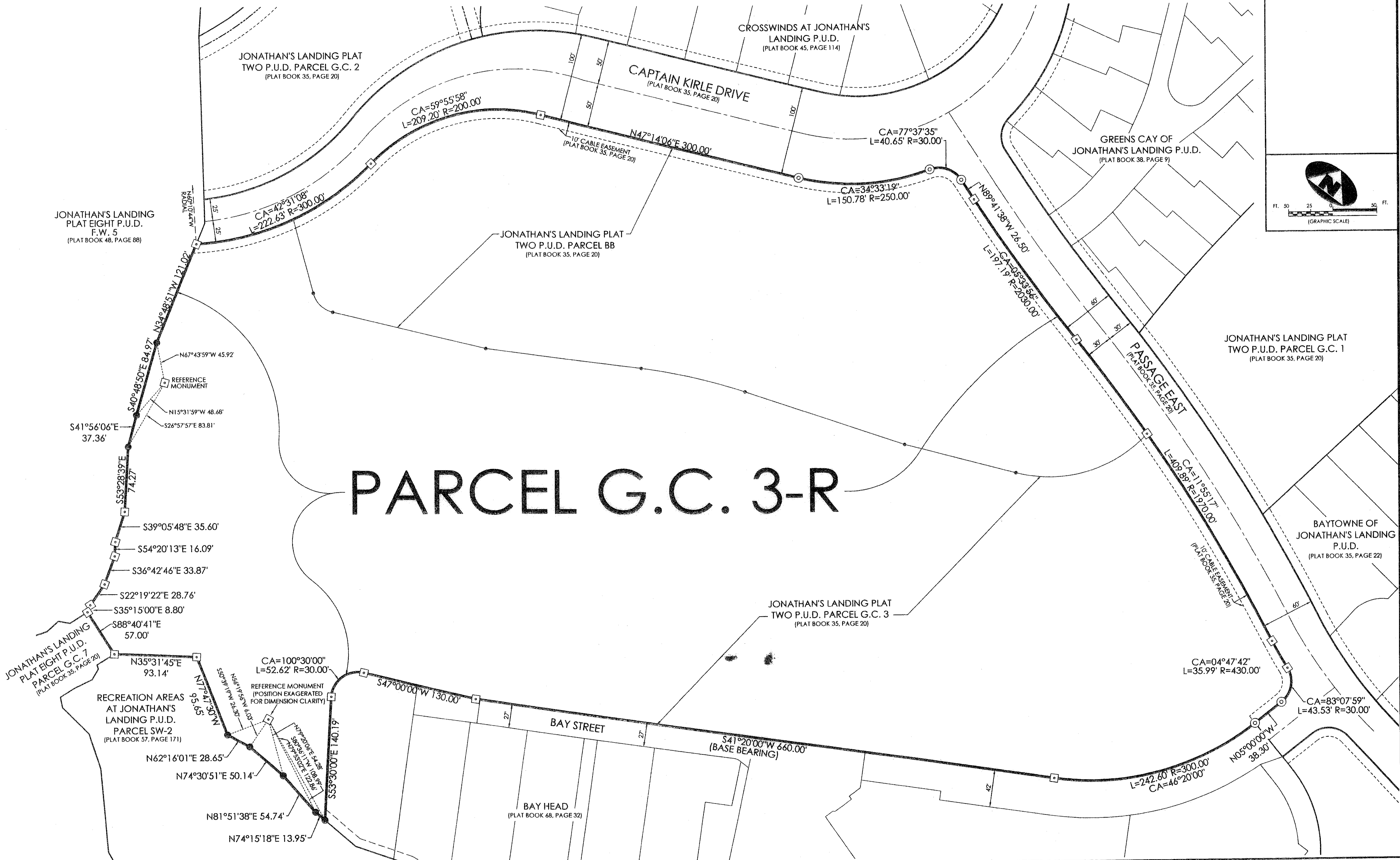
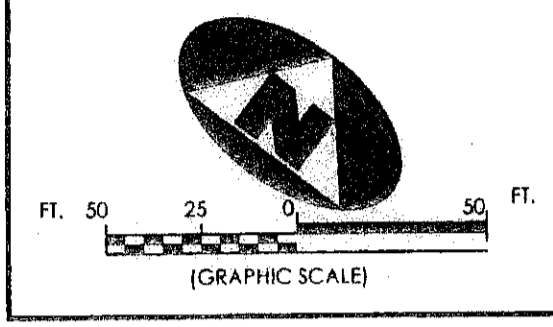


# JONATHAN'S LANDING REPLAT OF PORTIONS OF PLAT TWO P.U.D.

101

BEING A REPLAT OF PARCELS BB AND G.C. 3, JONATHAN'S LANDING PLAT TWO P.U.D., ACCORDING TO THE PLAT THEREOF, AS RECORDED IN PLAT BOOK 35, PAGE 20, PUBLIC RECORDS, PALM BEACH COUNTY, FLORIDA, AND LYING IN SECTION 7, TOWNSHIP 41 SOUTH, RANGE 43 EAST, PALM BEACH COUNTY, FLORIDA



LEGEND			SURVEYOR'S NOTES		FILE: P311-PLAT	
C/L	DENOTES A CENTERLINE	R	DENOTES RADIUS DISTANCE	1.	THE BEARING BASE FOR THIS PLAT IS SOUTH 41°20'00" WEST AS SHOWN ALONG THE EASTERLY LINE OF PARCEL G.C. 3 AS RECORDED IN PLAT BOOK 35, PAGE 20, PUBLIC RECORDS, PALM BEACH COUNTY, FLORIDA.	FILE: P311-PLAT
DE	DENOTES DRAINAGE EASEMENT	L	DENOTES ARC LENGTH DISTANCE	2.	IN THOSE INSTANCES WHERE UTILITY OR DRAINAGE STRUCTURES ARE CONSTRUCTED IN CONFLICT WITH THE PLATTED PERMANENT CONTROL POINT POSITION STRADDLERS MONUMENTED AS PERMANENT CONTROL POINTS WILL BE SET TO REFERENCE THE PLATTED POSITION.	FB: WO NO.: P311
UE	DENOTES UTILITY EASEMENT	CA	DENOTES CENTRAL ANGLE	3.	THIS INSTRUMENT WAS PREPARED BY WM. R. VAN CAMPEN, P.S.M. NO. 2424, IN AND FOR THE OFFICES OF ASSOCIATED LAND SURVEYOR'S, INC., 4152 WEST BLUE HERON BOULEVARD, SUITE 121, RIVIERA BEACH, FLORIDA, 33407	SCALE: 1"=50' DATE: 10-3-2007
PG	DENOTES PAGE	ORB	DENOTES OFFICIAL RECORDS BOOK			DWN: KVC SHEET 2 OF 2
(R/W)	DENOTES RIGHT-OF-WAY	□	DENOTES A SET PERMANENT REFERENCE MONUMENT (L.B. 7344)			
		⊙	DENOTES A SET CARRIAGE BOLT AND WASHER STAMPED LB7344			
		⊙	DENOTES CORNER NOT SET/FOUND			

**ASSOCIATED LAND SURVEYORS, INC.**  
 4152 W. BLUE HERON BOULEVARD-SUITE 121  
 RIVIERA BEACH FLORIDA 33404  
 PHONE: (561) 848-2102 FAX: (561) 844-9659  
 EMAIL: ALSSURVEY@AOL.COM