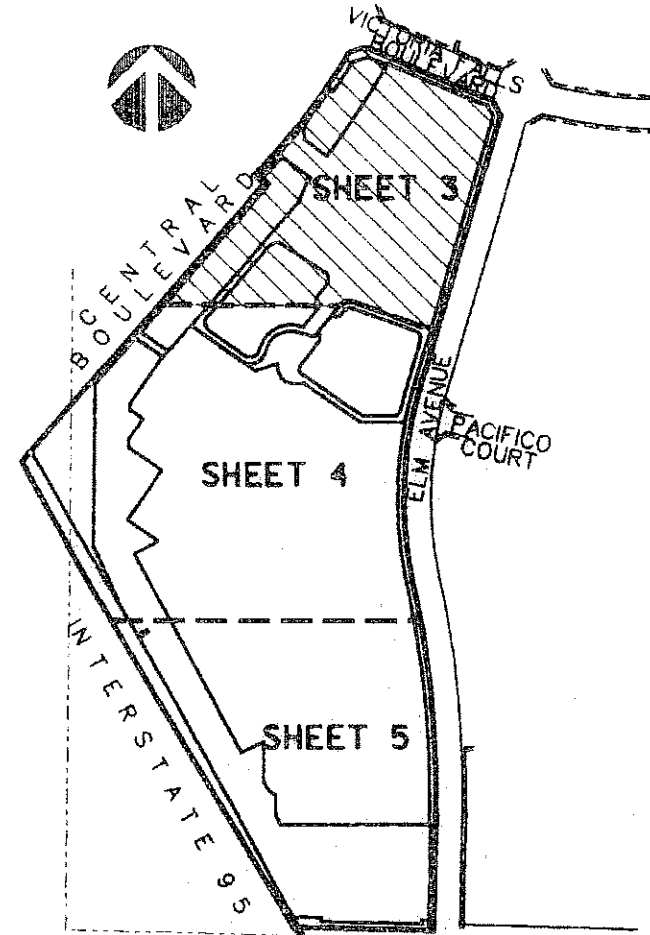
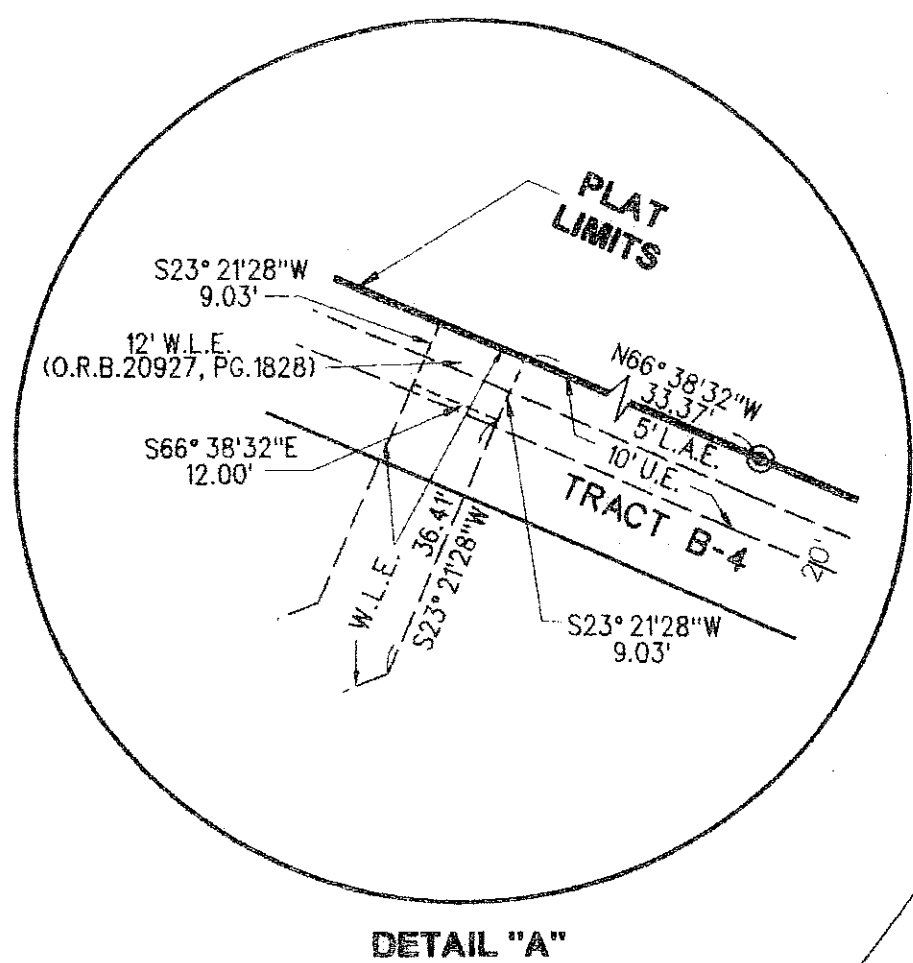


PERIMETER

SURVEYING & MAPPING
 Certificate of Authorization No. LB7264
 Prepared by: Jeff S. Hodapp, P.S.M.
 951 Broken Sound Parkway, Suite 320
 Boca Raton, Florida 33487
 Tel: (561) 241-9988
 Fax: (561) 241-5182



KEY MAP
NOT TO SCALE

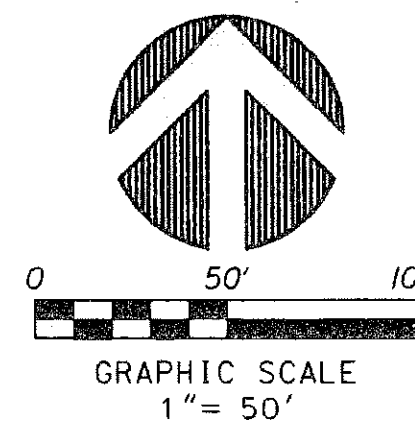


DETAIL "A"

CIMARRON COVE

A PORTION OF THE SOUTHEAST ONE-QUARTER OF SECTION 35, AND THE WEST ONE-HALF OF SECTION 36, TOWNSHIP 41 SOUTH, RANGE 42 EAST, PALM BEACH GARDENS, PALM BEACH COUNTY, FLORIDA.

JANUARY, 2008



104

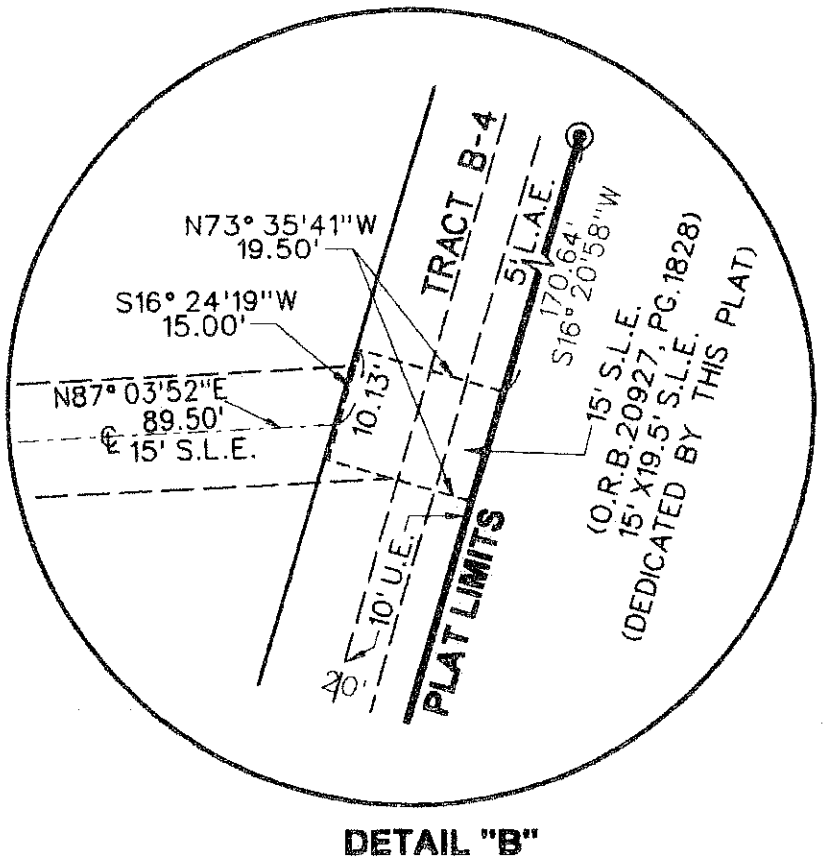
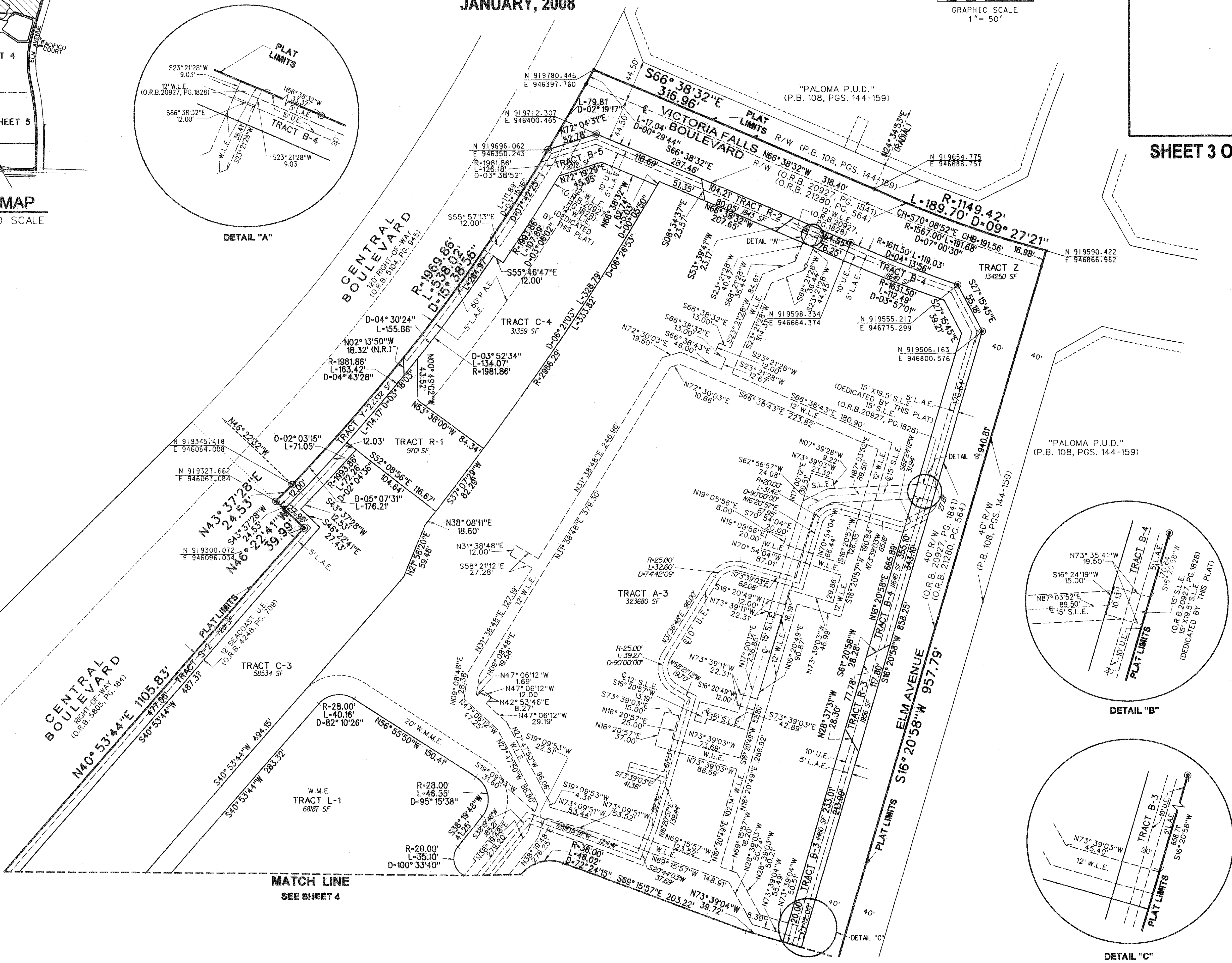
SHEET 3 OF 5

LEGEND:

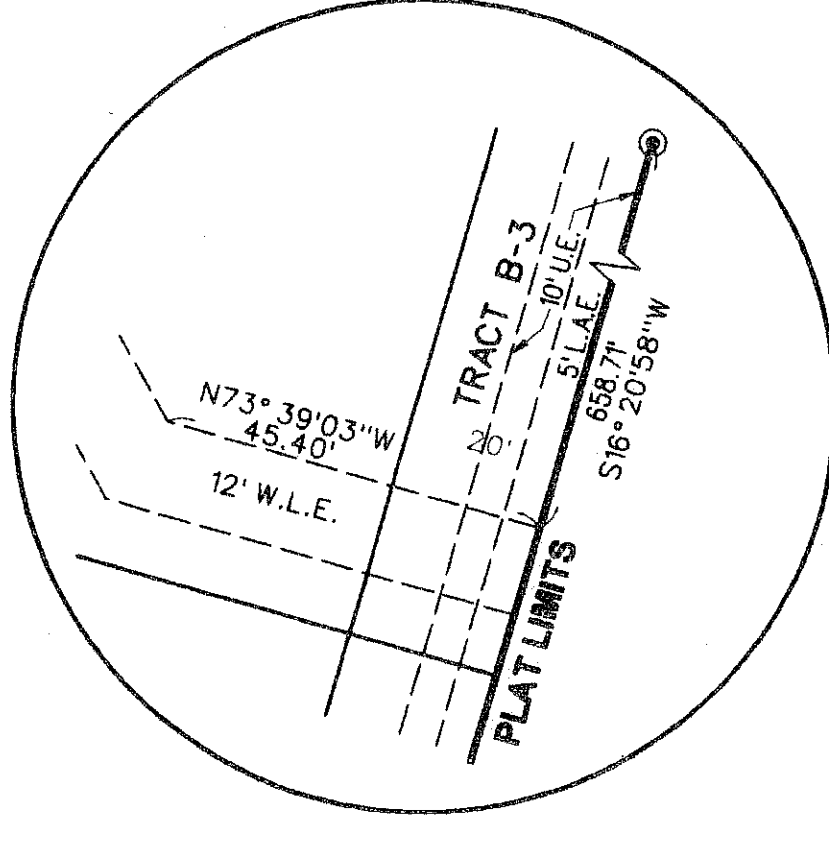
- ⊙ SET P.R.M. (UNLESS OTHERWISE NOTED): 4" X 4" CONC. MON. WITH ALUMINUM DISK STAMPED P.R.M. #LB7264
- SET P.C.P. #LB7264
- ⊖ CENTERLINE

ABBREVIATIONS:

- CH CHORD
- CHB CHORD BEARING
- CONC. CONCRETE
- COR. CORNER
- D.E. DELTA (CENTRAL ANGLE)
- DRAINAGE EASEMENT
- ARLENGTH
- L.B. LICENSED BUSINESS
- L.E. LANDSCAPE EASEMENT
- L.S. LICENSED SURVEYOR
- L.S.E. LIFT STATION EASEMENT
- MON. MONUMENT
- O.R.B. OFFICIAL RECORDS BOOK
- N.P.B.C.I.D. NORTHERN PALM BEACH COUNTY IMPROVEMENT DISTRICT
- N.R. NON-RADIAL
- P.A.E. PEDESTRIAN ACCESS EASEMENT
- P.B. PLAT BOOK
- P.B.C.R. PALM BEACH COUNTY RECORDS
- P.C. PAGE
- P.C.P. PERMANENT CONTROL POINT
- P.O.B. POINT OF BEGINNING
- P.O.C. POINT OF COMMENCEMENT
- P.R.M. PERMANENT REFERENCE MONUMENT
- P.S.M. PROFESSIONAL SURVEYOR & MAPPER
- P.U.D. PLANNED UNIT DEVELOPMENT
- R. RADIUS
- R.E.E. ROOF ENCROACHMENT EASEMENT
- R/W RIGHT-OF-WAY
- S.E. SIDEWALK EASEMENT
- SEC. SECTION
- S.F. SQUARE FEET
- S.L.E. SEWER LINE EASEMENT
- U.E. UTILITY EASEMENT
- W.L.E. WATER LINE EASEMENT
- W.M.E. WATER MANAGEMENT EASEMENT
- W.M.M. WATER MANAGEMENT
- W.M.A.E. MAINTENANCE EASEMENT
- W.M.M.E. WATER MANAGEMENT ACCESS EASEMENT



DETAIL "B"



DETAIL "C"

MATCH LINE
SEE SHEET 4