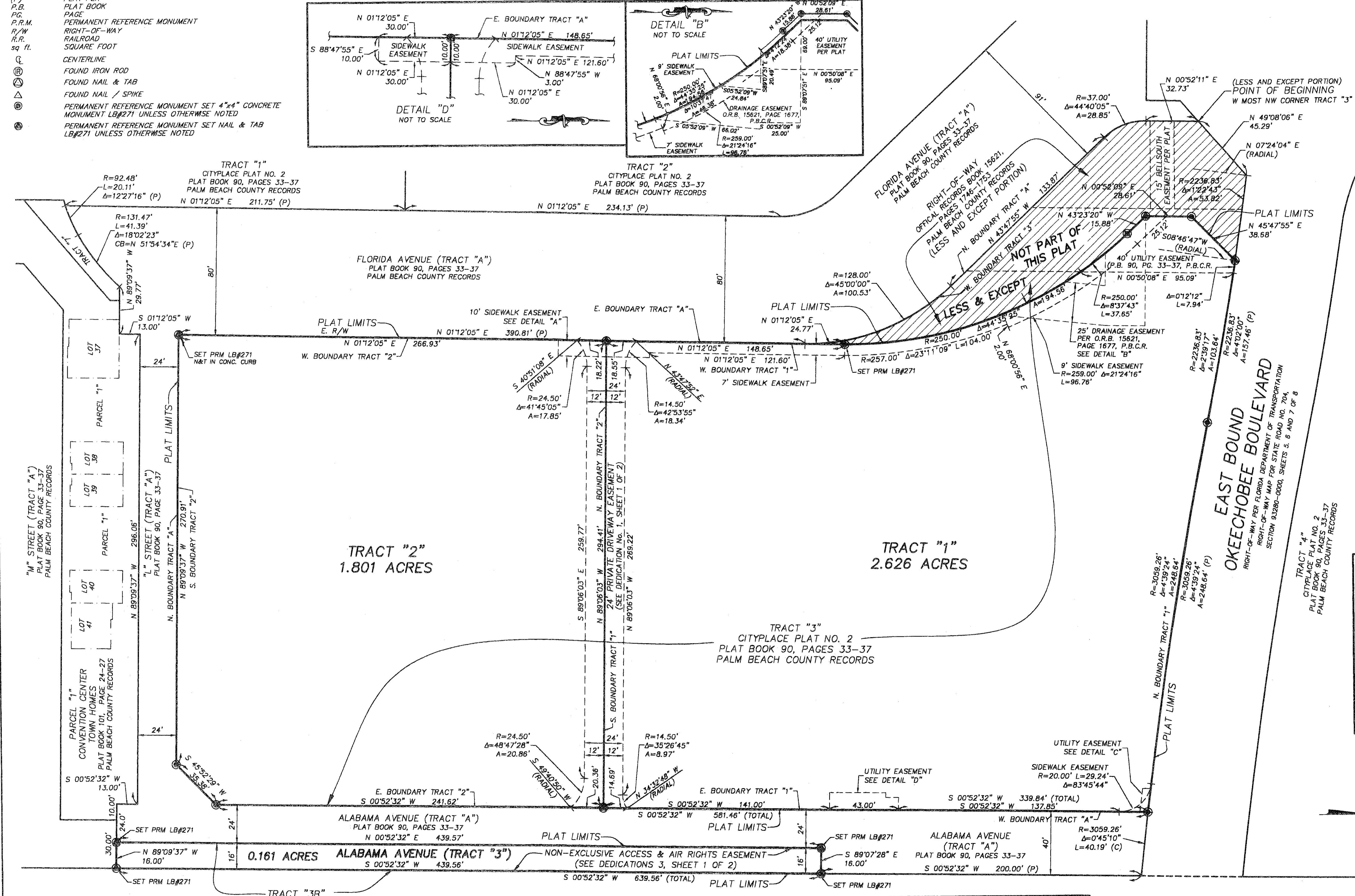


# CITYPLACE SOUTH TOWER

A REPLAT OF TRACT "3B", TOGETHER WITH A PORTION OF TRACT "3", CITYPLACE PLAT NO. 2, ACCORDING TO THE PLAT THEREOF, AS RECORDED IN PLAT BOOK 90, PAGES 33 THROUGH 37, OF THE PUBLIC RECORDS OF PALM BEACH COUNTY, FLORIDA; LYING IN SECTION 28, TOWNSHIP 43 SOUTH, RANGE 43 EAST, IN THE CITY OF WEST PALM BEACH, PALM BEACH COUNTY, FLORIDA.  
JUNE 2008

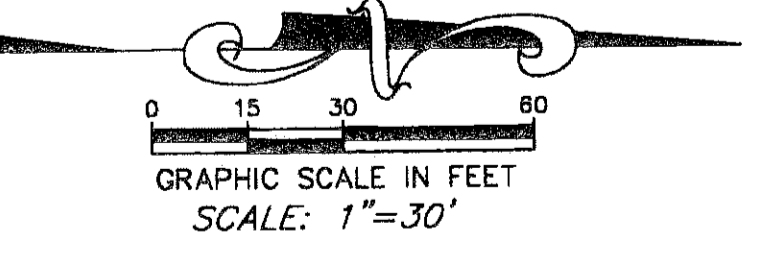
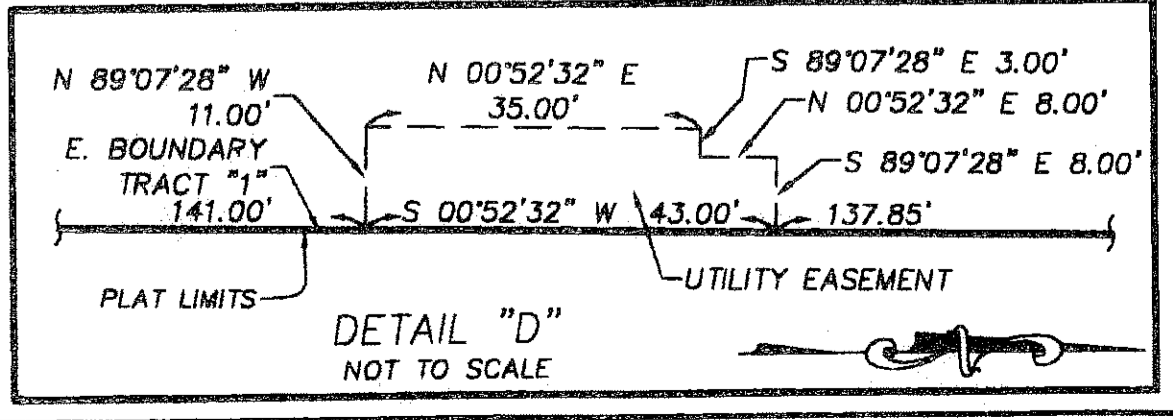
- LEGEND**
- A= ARC LENGTH
  - CONC. CONCRETE
  - Δ= DELTA ANGLE (CENTRAL ANGLE)
  - FND FOUND
  - N&T NAIL & TAB
  - O.R.B. OFFICIAL RECORDS BOOK
  - P.B.C.R. PALM BEACH COUNTY RECORDS
  - (P) PLAT PER
  - P.B. PLAT BOOK
  - PG. PAGE
  - P.R.M. PERMANENT REFERENCE MONUMENT
  - R/W RIGHT-OF-WAY
  - R.R. RAILROAD
  - sq. ft. SQUARE FOOT
  - CL CENTERLINE
  - FOUND IRON ROD
  - FOUND NAIL & TAB
  - FOUND NAIL / SPIKE
  - PERMANENT REFERENCE MONUMENT SET 4"x4" CONCRETE MONUMENT LB#271 UNLESS OTHERWISE NOTED
  - PERMANENT REFERENCE MONUMENT SET NAIL & TAB LB#271 UNLESS OTHERWISE NOTED



STATE OF FLORIDA  
COUNTY OF PALM BEACH  
THIS PLAT WAS FILED FOR RECORD AT \_\_\_\_\_  
THIS \_\_\_\_\_ DAY OF \_\_\_\_\_, 20\_\_\_\_  
AND DULY RECORDED IN PLAT BOOK NO. \_\_\_\_\_  
ON PAGE \_\_\_\_\_  
SHARON R. BOCK,  
CLERK & COMPTROLLER  
BY \_\_\_\_\_ DEPUTY CLERK

SHEET 2 OF 2 SHEETS

NOTICE: THIS PLAT, AS RECORDED IN ITS GRAPHIC FORM, IS THE OFFICIAL DEPICTION OF THE SUBDIVIDED LANDS DESCRIBED HEREIN AND WILL IN NO CIRCUMSTANCES BE SUPPLANTED IN AUTHORITY BY ANY OTHER GRAPHIC OR DIGITAL FORM OF THE PLAT. THERE MAY BE ADDITIONAL RESTRICTIONS THAT ARE NOT RECORDED ON THIS PLAT THAT MAY BE FOUND IN THE PUBLIC RECORDS OF THIS COUNTY.



THIS INSTRUMENT WAS PREPARED BY:  
NICHOLAS MESSINA JR., P.S.M. #6559 OF  
**GRAVEN THOMPSON & ASSOCIATES, INC.**  
ENGINEERS PLANNERS SURVEYORS  
3563 N.W. 23RD STREET FORT LAUDERDALE, FLORIDA 33309  
TEL: (954) 739-8400 FAX: (954) 739-8409  
JUNE 2008 97-0072.43