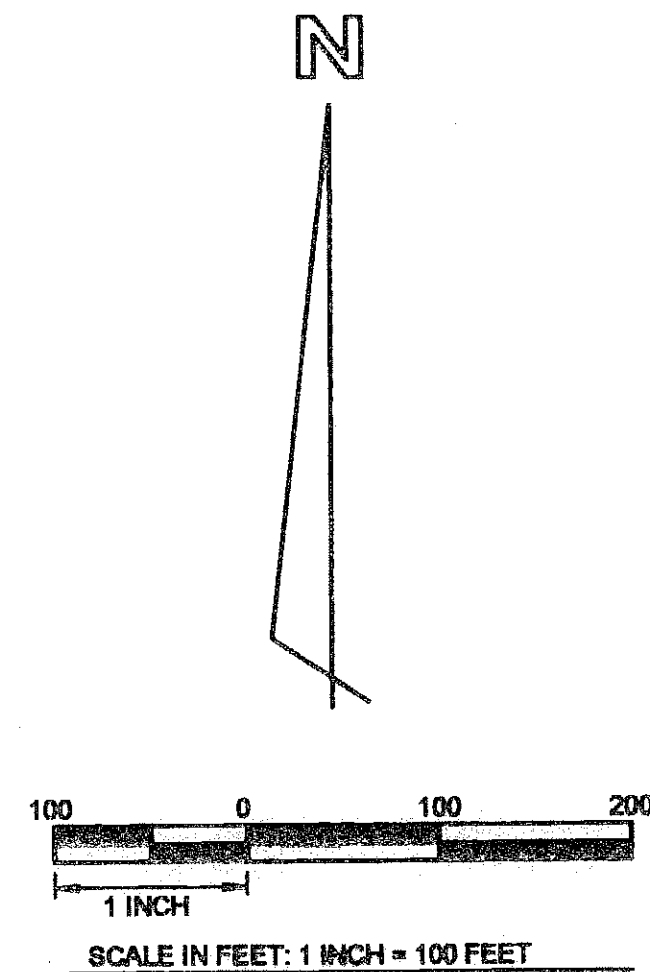


"BOCA RATON COMMUNITY HIGH SCHOOL PLAT"

BEING A REPLAT OF
BLOCKS 29 AND 30 AND N.W. 16th STREET ROAD RIGHT OF WAY
COUNTRY CLUB VILLAGE SECTION E (PLAT BOOK 28, PAGE 204) AND
A PORTION OF SECTIONS 13 AND 24, TOWNSHIP 47 SOUTH, RANGE 42 EAST,
CITY OF BOCA RATON, PALM BEACH COUNTY, FLORIDA
SHEET 2 OF 2 SHEETS

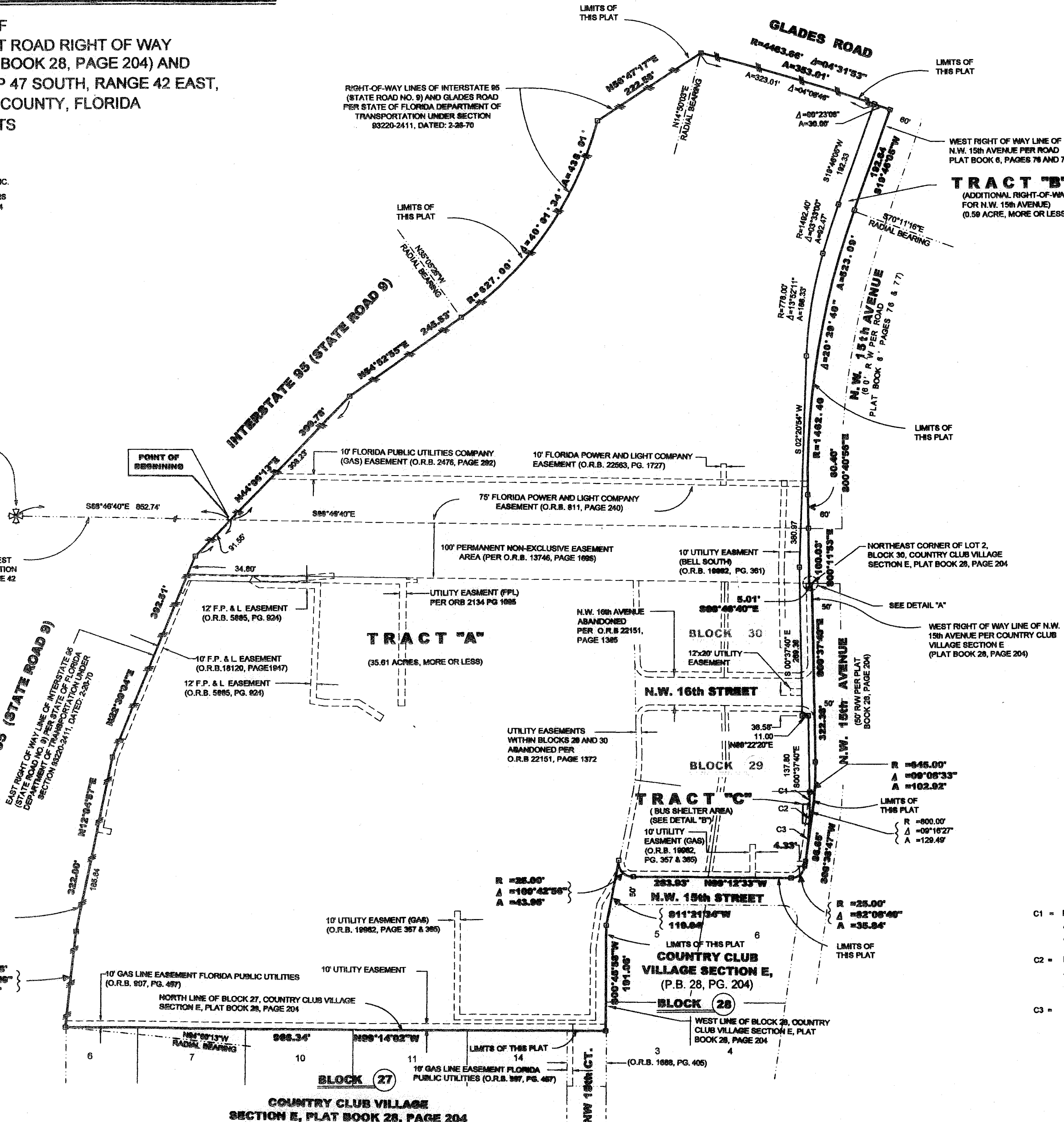
THIS INSTRUMENT WAS PREPARED BY:
JOHN D. WEAVER
IN THE OFFICE OF:
HELLER-WEAVER AND SHEREMETA, INC.
ENGINEERS, SURVEYORS and MAPPERS
310 SOUTHEAST FIRST STREET, SUITE 4
DELRAY BEACH, FLORIDA 33483
(561) 243-8700



COUNTY OF PALM BEACH
STATE OF FLORIDA
THIS PLAT WAS FILED FOR
RECORD AT _____
THIS _____ DAY OF _____
200____, AND DULY RECORDED
IN PLAT BOOK NO. _____
ON PAGE _____
SHARON R. BOCK, CLERK OF
CIRCUIT COURT AND COMPTROLLER
BY _____ D.C.

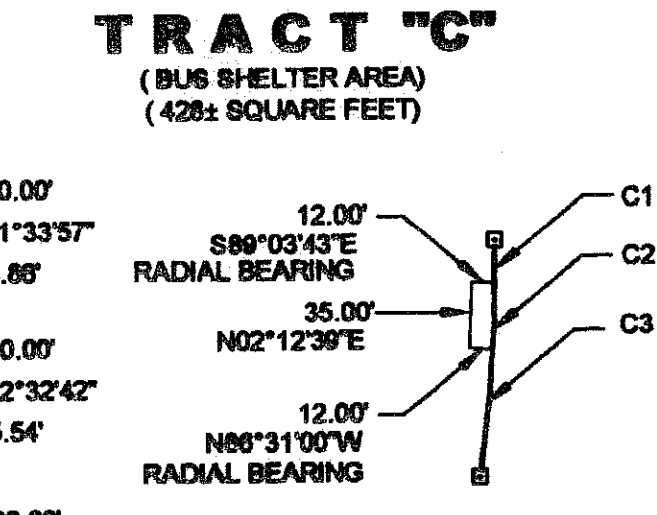
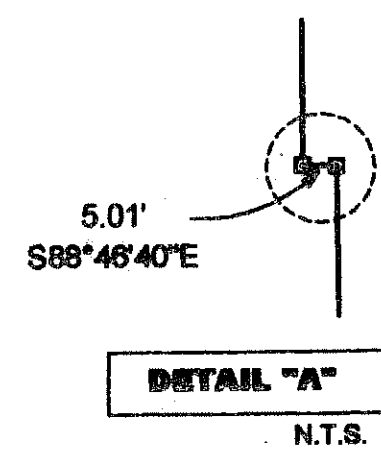
POINT OF COMMENCEMENT:
NORTHWEST CORNER OF THE
NORTHWEST ONE-QUARTER (NW-1/4)
OF SECTION 24, TOWNSHIP 47 SOUTH,
RANGE 42 EAST

NORTH LINE OF THE NORTHWEST
ONE-QUARTER (NW-1/4) OF SECTION
24, TOWNSHIP 47 SOUTH, RANGE 42
EAST



LEGEND:

- P.B. PLAT BOOK
- O.R.B. OFFICIAL RECORDS BOOK
- PG. PAGE(S)
- P.B.C.R. PALM BEACH COUNTY RECORDS
- RW RIGHT-OF-WAY
- P.R.M. PERMANENT REFERENCE MONUMENT
- P.C.P. PERMANENT CONTROL POINT
- CL CENTERLINE
- INDICATES "SET PERMANENT REFERENCE MONUMENT P.S.M. #9550"
- R RADIUS
- Δ DELTA (CENTRAL ANGLE)
- A ARC DISTANCE
- N.V.A.L. NON-VEHICULAR ACCESS LINE
- N.T.S. NOT TO SCALE
- C1 CURVE DATA



DETAIL "B"
SCALE: 1"=100'