

0941.000

# DELRAY HOLDINGS 282

THIS INSTRUMENT PREPARED BY  
DAVID P. LINDLEY  
OF  
CAULFIELD and WHEELER, INC.  
SURVEYORS - ENGINEERS - PLANNERS  
7301-A WEST PALMETTO PARK ROAD, SUITE 100A  
BOCA RATON, FLORIDA 33433 - (561)392-1991  
NOVEMBER - 2007

A PLANNED UNIT DEVELOPMENT  
BEING A REPLAT OF A PORTION OF BLOCK 62, PALM BEACH FARMS COMPANY PLAT NO. 3,  
AS RECORDED IN PLAT BOOK 2, PAGES 45 THROUGH 54 OF THE PUBLIC RECORDS OF PALM BEACH COUNTY, FLORIDA,  
LYING IN SECTION 6, TOWNSHIP 46 SOUTH, RANGE 42 EAST, PALM BEACH COUNTY, FLORIDA

139

STATE OF FLORIDA  
COUNTY OF PALM BEACH  
THIS PLAT WAS FILED FOR  
RECORD AT \_\_\_\_\_ M.  
THIS \_\_\_\_\_ DAY OF \_\_\_\_\_  
A.D. 2008 AND DULY RECORDED  
IN PLAT BOOK \_\_\_\_\_ ON  
PAGES \_\_\_\_\_ AND \_\_\_\_\_  
SHARON R. BOCK  
CLERK AND COMPTROLLER

BY: \_\_\_\_\_  
DEPUTY CLERK

**SHEET 4 OF 15**

**MATCH LINE SHEET 5 OF 15**

**TRACT P1**  
SUBJECT TO A CONSERVATION EASEMENT, AS RECORDED  
IN O.R.B. 22785, PAGES 1021-1051, PUBLIC RECORDS  
OF PALM BEACH COUNTY, FLORIDA

**TRACT A**

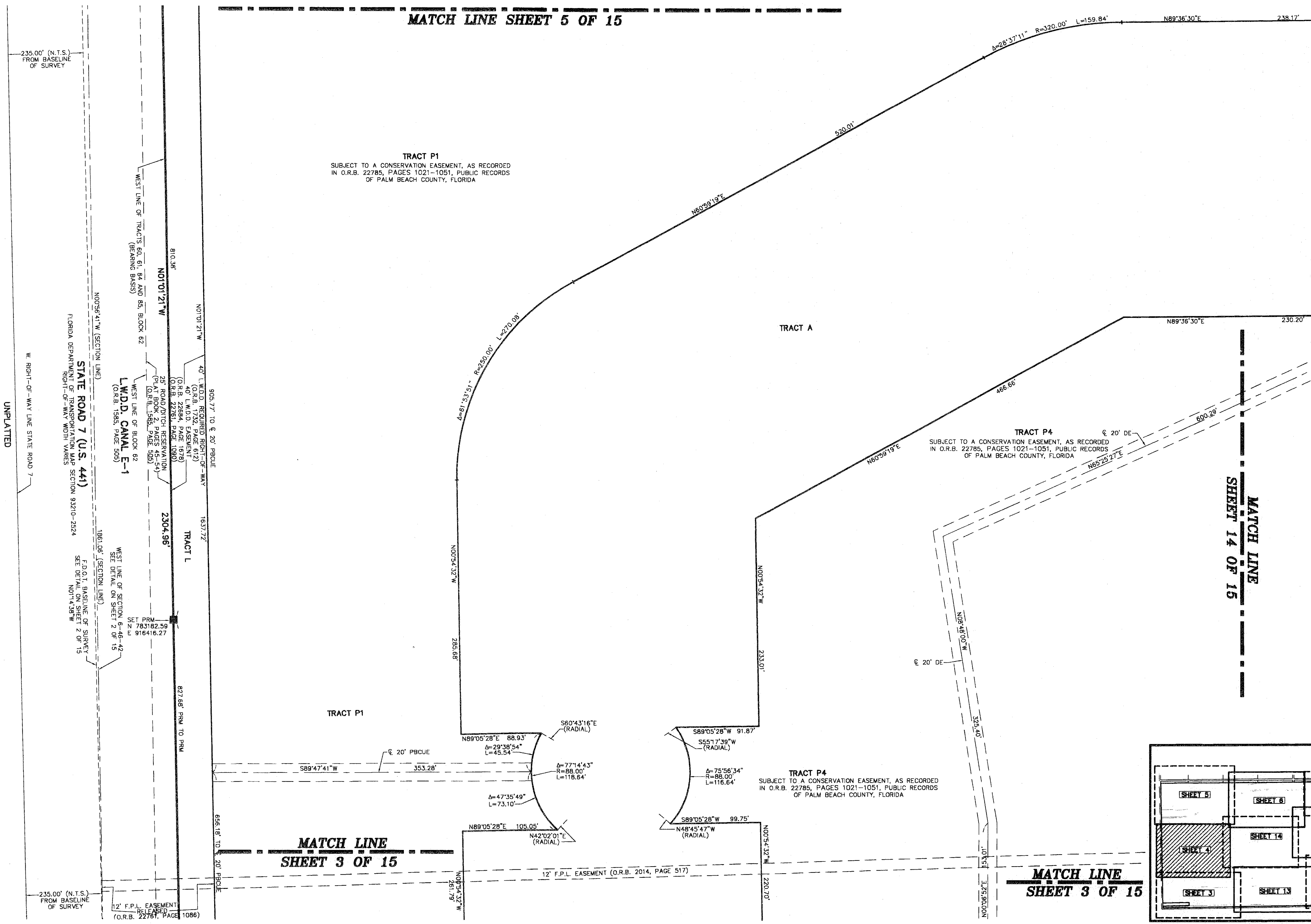
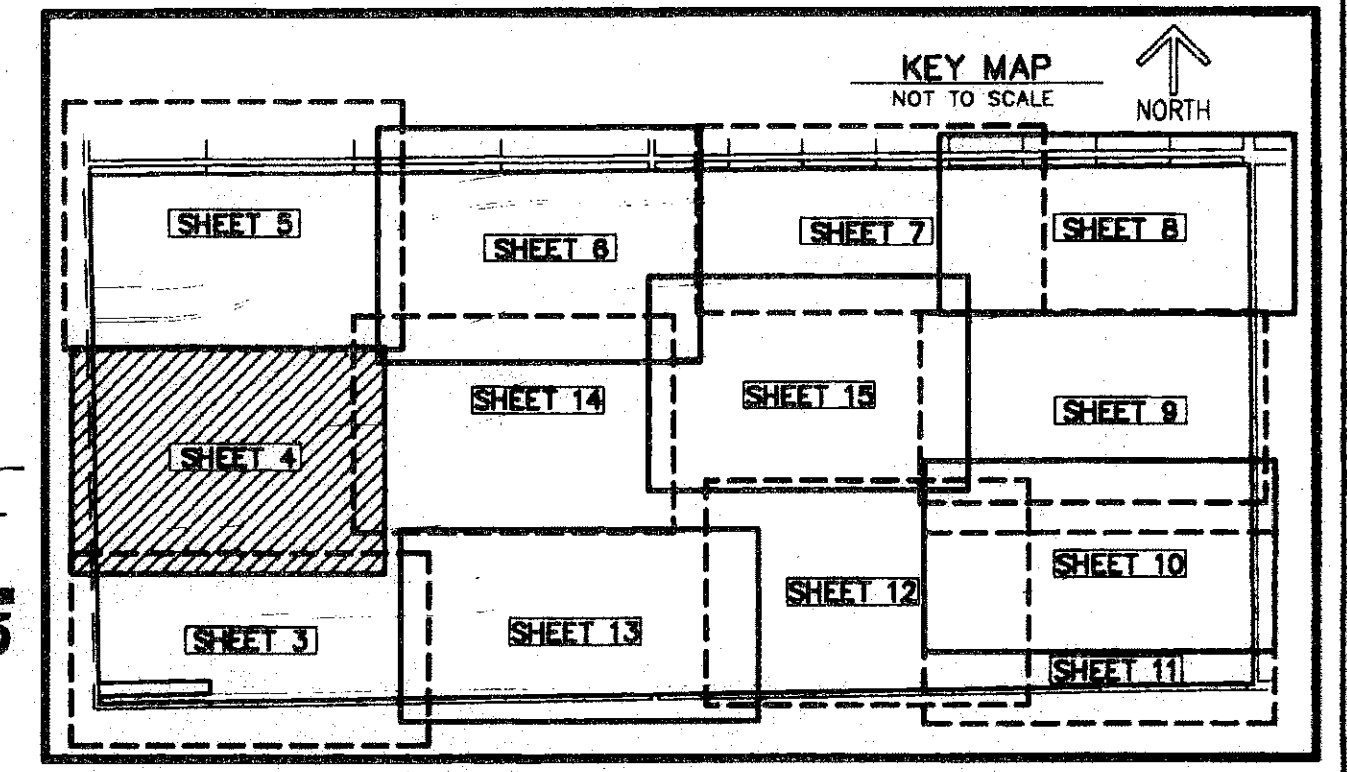
**TRACT P4**  
SUBJECT TO A CONSERVATION EASEMENT, AS RECORDED  
IN O.R.B. 22785, PAGES 1021-1051, PUBLIC RECORDS  
OF PALM BEACH COUNTY, FLORIDA

**TRACT P4**  
SUBJECT TO A CONSERVATION EASEMENT, AS RECORDED  
IN O.R.B. 22785, PAGES 1021-1051, PUBLIC RECORDS  
OF PALM BEACH COUNTY, FLORIDA

**MATCH LINE  
SHEET 3 OF 15**

**MATCH LINE  
SHEET 3 OF 15**

**MATCH LINE  
SHEET 14 OF 15**



235.00' (N.T.S.)  
FROM BASELINE  
OF SURVEY

WEST LINE OF TRACTS 60, 61, 64 AND 65, BLOCK 62  
(BEARING BASIS)  
N01°01'21\"W

FLORIDA DEPARTMENT OF TRANSPORTATION MAP SECTION 93210-2524  
RIGHT-OF-WAY WIDTH VARIES

WEST LINE OF BLOCK 62  
L.W.D. CANAL E-1  
(O.R.B. 1565, PAGE 505)

F.D.O.T. BASELINE OF SURVEY  
SEE DETAIL ON SHEET 2 OF 15  
N01°14'38\"W

SET PRM  
783182.59  
916416.27

WEST LINE OF SECTION 6-46-42  
SEE DETAIL ON SHEET 2 OF 15

235.00' (N.T.S.)  
FROM BASELINE  
OF SURVEY

12' F.P.L. EASEMENT  
(O.R.B. 22781, PAGE 1086)

12' F.P.L. EASEMENT (O.R.B. 2014, PAGE 517)

UNPLATTED

STATE ROAD 7 (U.S. 441)  
RIGHT-OF-WAY WIDTH VARIES

WEST LINE OF BLOCK 62  
L.W.D. CANAL E-1  
(O.R.B. 1565, PAGE 505)

F.D.O.T. BASELINE OF SURVEY  
SEE DETAIL ON SHEET 2 OF 15  
N01°14'38\"W

WEST LINE OF SECTION 6-46-42  
SEE DETAIL ON SHEET 2 OF 15

235.00' (N.T.S.)  
FROM BASELINE  
OF SURVEY

12' F.P.L. EASEMENT  
(O.R.B. 22781, PAGE 1086)

12' F.P.L. EASEMENT (O.R.B. 2014, PAGE 517)

UNPLATTED