

# MIDLAND COMMONS

A MULTIPLE USE PLANNED DEVELOPMENT (MUPD)  
 BEING A REPLAT OF A PORTION OF TRACTS 9 AND 10  
 SECTION 36, TOWNSHIP 44 SOUTH, RANGE 42 EAST,  
 RECORDED IN PLAT BOOK 3, PAGE 10,  
 PUBLIC RECORDS OF PALM BEACH COUNTY, FLORIDA  
 situate in Section 36, Township 44 South, Range 42 East  
 Palm Beach County, Florida.

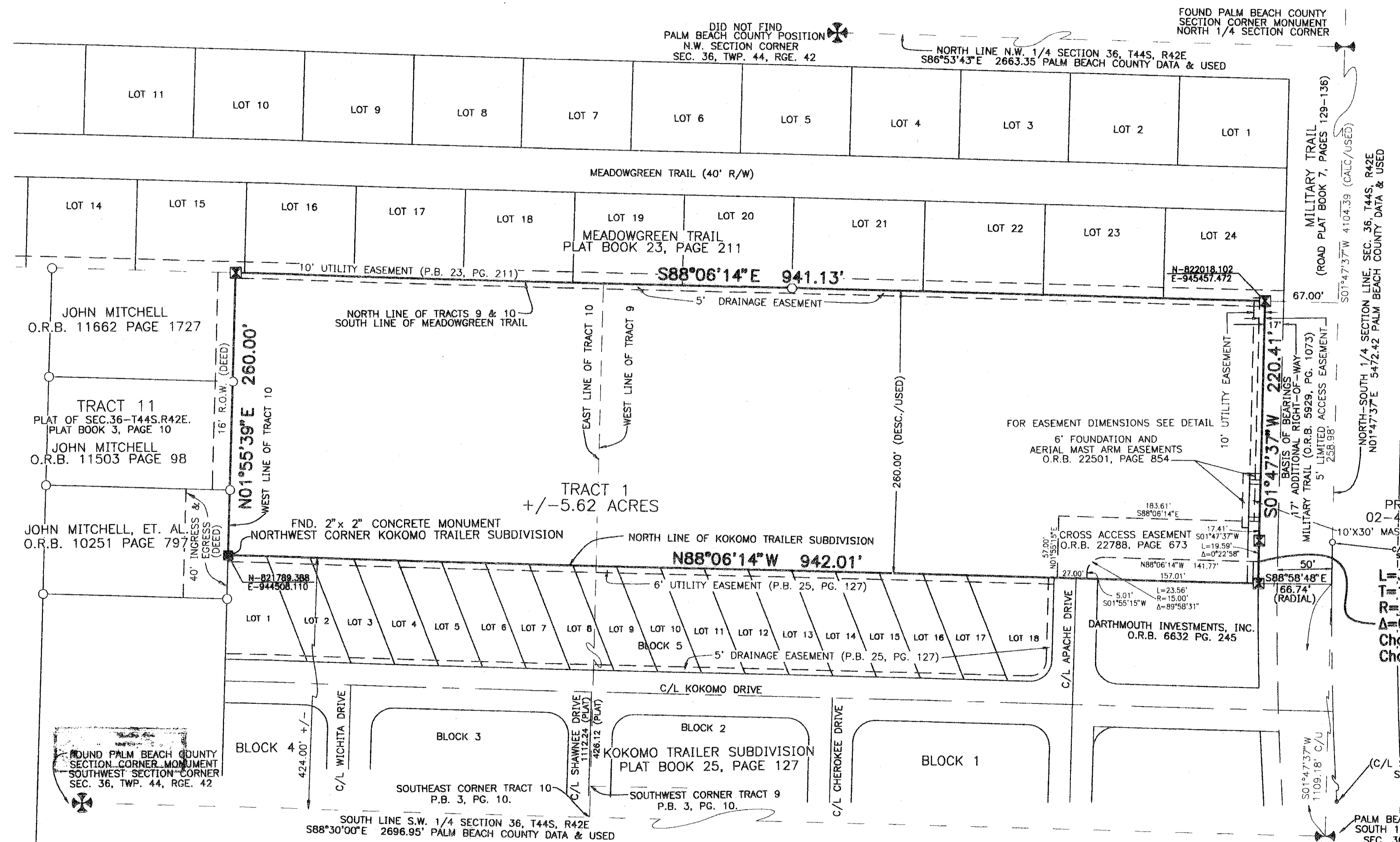
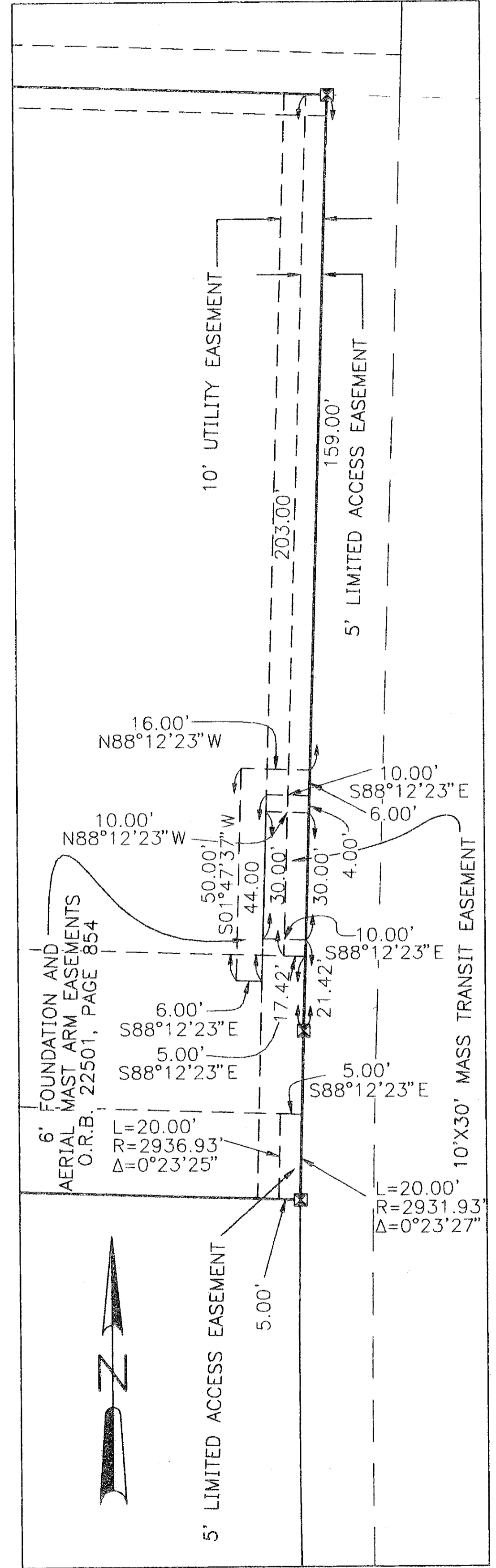
Sheet 2 of 2

STATE OF FLORIDA  
 COUNTY OF PALM BEACH

This plat was filed for record at \_\_\_\_\_, this \_\_\_\_\_ day of \_\_\_\_\_, 2008, and duly recorded in Plat Book No. \_\_\_\_\_ on Pages \_\_\_\_\_ through \_\_\_\_\_.

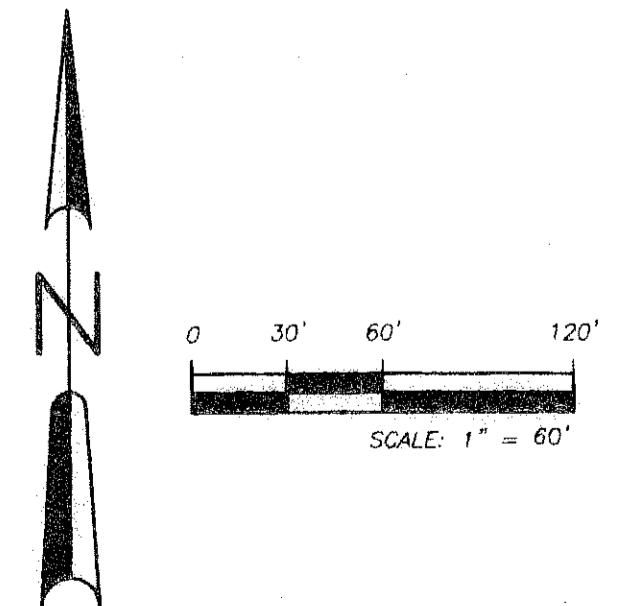
SHARON R. BOCK  
 Clerk and Comptroller

By: \_\_\_\_\_



- LEGEND**
- PARCEL BOUNDARY
  - Δ CENTRAL ANGLE OF CURVE
  - R RADIUS OF CURVE
  - L ARC LENGTH OF CURVE
  - T TANGENT LENGTH
  - O.R.B. OFFICIAL RECORD BOOK
  - P.B. PLAT BOOK
  - R.O.W. RIGHT-OF-WAY
  - N-700000.000 E-250000.000 DENOTES STATE PLANE COORDINATES
  - T./TWP. DENOTES TOWNSHIP
  - R./RGE. DENOTES RANGE
  - ☒ DENOTES SET 4" X 4" CONCRETE MONUMENT AS LABELED
  - ☑ DENOTES 2" X 2" CONCRETE MONUMENT
  - DENOTES FOUND 5/8" IRON REBAR

Coordinates shown are grid and meet or exceed the local accuracy requirements of a 2cm Geodetic Control Survey as determined by a GPS survey of the Platted monuments. Datum = NAD83, 1990 adjustment as readjusted by Palm Beach County Survey Department (1998) Zone = Florida East Linear Foot = U.S. Foot Coordinate System = 1983 State Plane Mercator Projection Scale Factor = 1.0000371 Ground Distance x Scale Factor = Grid Distance



**PETSCHÉ & ASSOCIATES, INC.**  
 Professional Engineers - Land Surveyors - Development Consultants - Testing Services  
 2581 Metrocentre Boulevard, Suite 6, West Palm Beach, Florida 33407 (561) 640-3800  
 2600 Eldorado Parkway, Suite 240, McKinney, Texas 75070 (972) 562-9806

**MIDLAND COMMONS**  
 A REPLAT OF PORTIONS OF TRACTS 9 & 10  
 SECTION 36, TOWNSHIP 44 S., RANGE 42 E.  
 PALM BEACH COUNTY, FLORIDA

Drawn by: P.M.V.	Date: 8-15-2008	SCALE: 1" = 60'	JOB NUMBER: 04-007	SHEET 2	OF 2
Designed by: P.M.V.	Checked by: C.A.Z.				