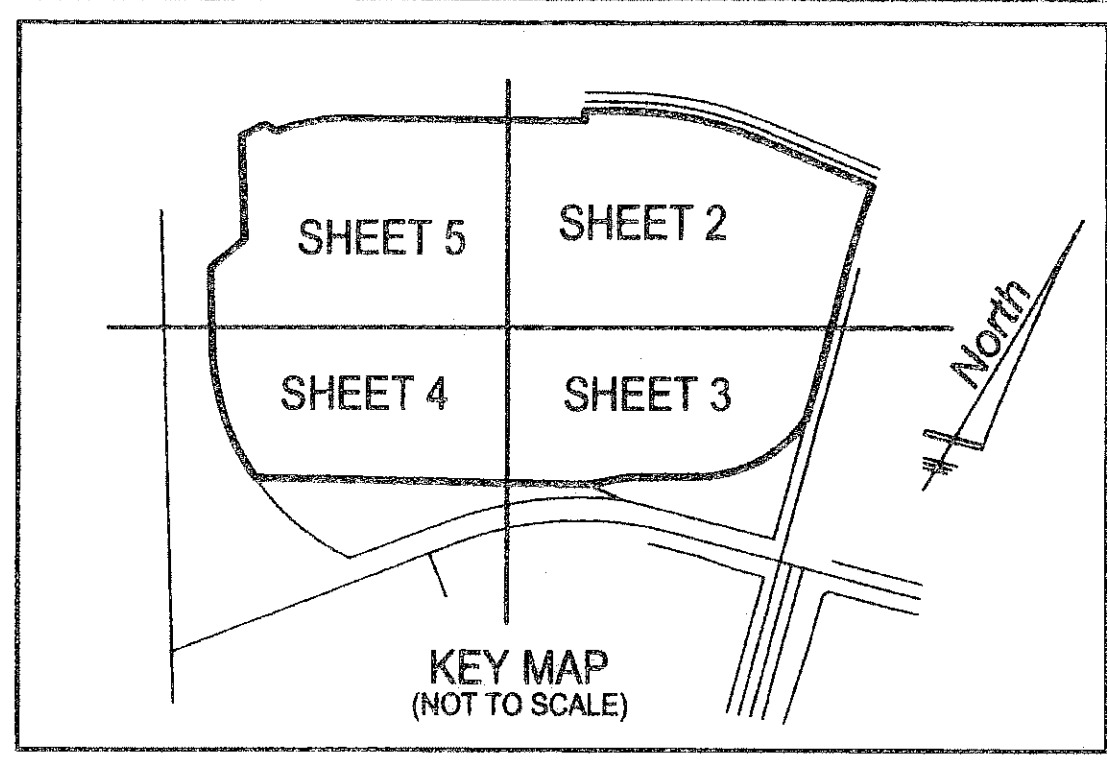
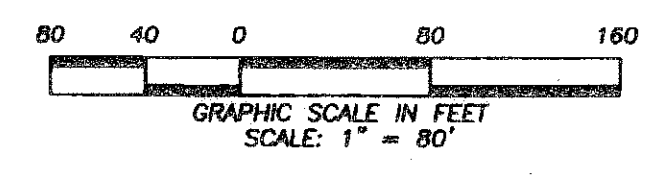
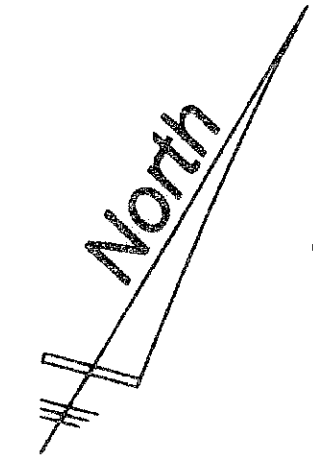
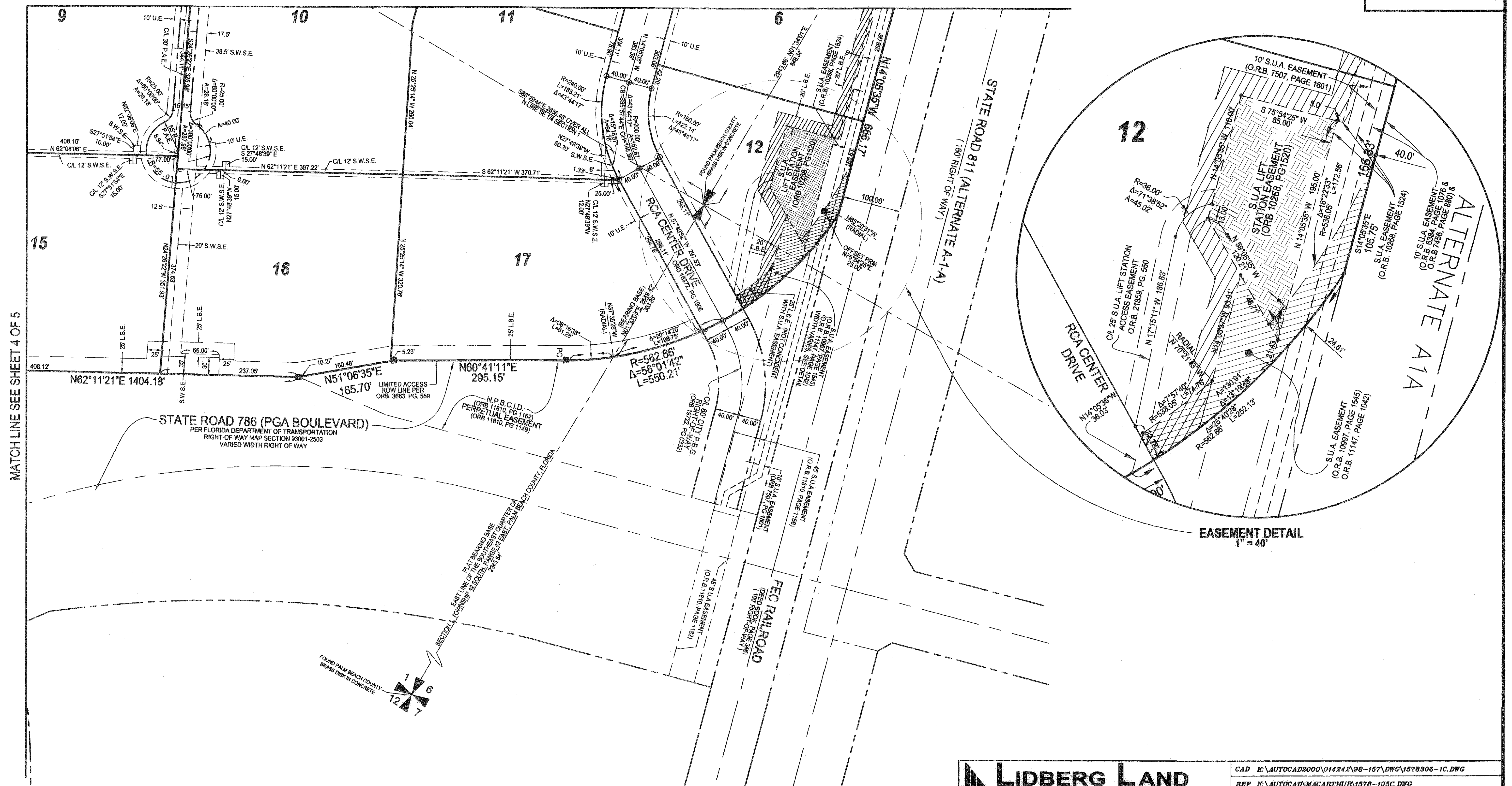


MACARTHUR PARCEL 5A

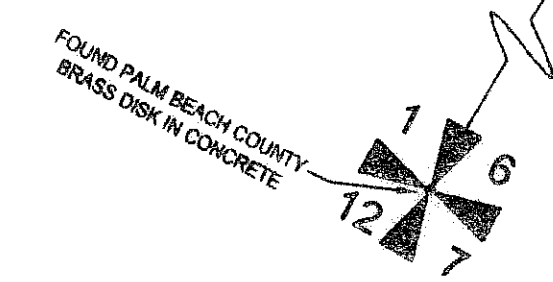
SITUATE IN SECTION 1, TOWNSHIP 42 SOUTH, RANGE 42 EAST AND SECTION 6, TOWNSHIP 42 SOUTH, RANGE 43 EAST, CITY OF PALM BEACH GARDENS, PALM BEACH COUNTY, FLORIDA
MARCH, 2008
SHEET 3 OF 5



MATCH LINE SEE SHEET 2 OF 5



MATCH LINE SEE SHEET 4 OF 5



LIDBERG LAND SURVEYING, INC.
 675 West Indianwood Road, Suite 200,
 Jupiter, Florida 33458 TEL: 561-746-8454

CAD K:\AUTOCAD2000\014242\88-157\DWG\1578306-1C.DWG			
REF K:\AUTOCAD\MACARTHUR\1578-105C.DWG			
PLD	AM.	FB.	JOB
OFF	S.F.B.	288	98-157-306
CKD	D.C.L.	12, 14-15	DATE
		17-18	08/04/02
		SHEET 3 OF 5	DWG
			D98-157P