

WELLINGTON GREEN, A MUPD/PUD, RE-PLAT NO. 1

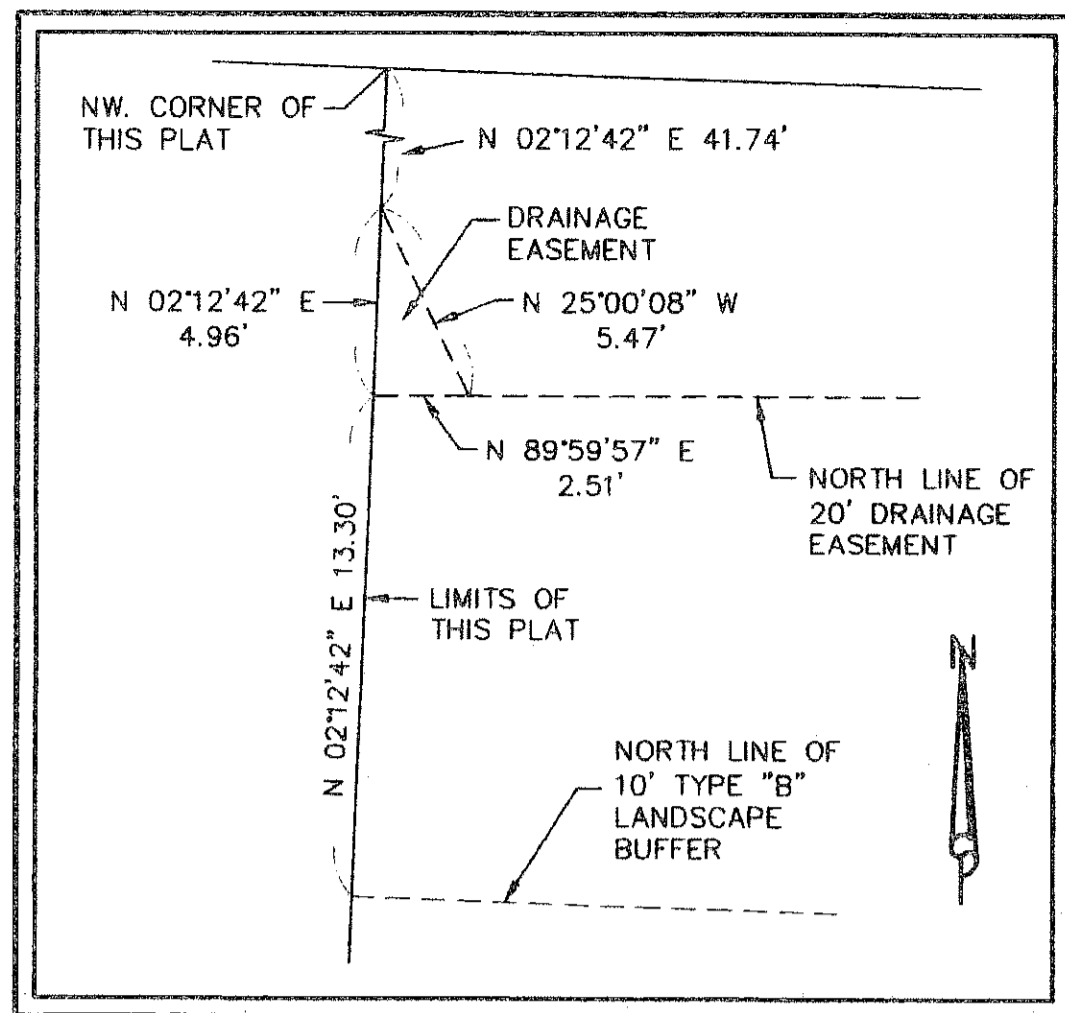
BEING A RE-PLAT OF TRACT F, TRACT W-7 AND WATER MANAGEMENT TRACT D OF THE PLAT OF WELLINGTON GREEN, A MUPD/PUD AS RECORDED IN PLAT BOOK 87, PAGES 81 THROUGH 90 OF THE PUBLIC RECORDS OF PALM BEACH COUNTY, FLORIDA
SECTION 13, TOWNSHIP 44 SOUTH, RANGE 41 EAST, VILLAGE OF WELLINGTON, PALM BEACH COUNTY, FLORIDA
JUNE 2008

STATE OF FLORIDA }
COUNTY OF PALM BEACH } S.S.

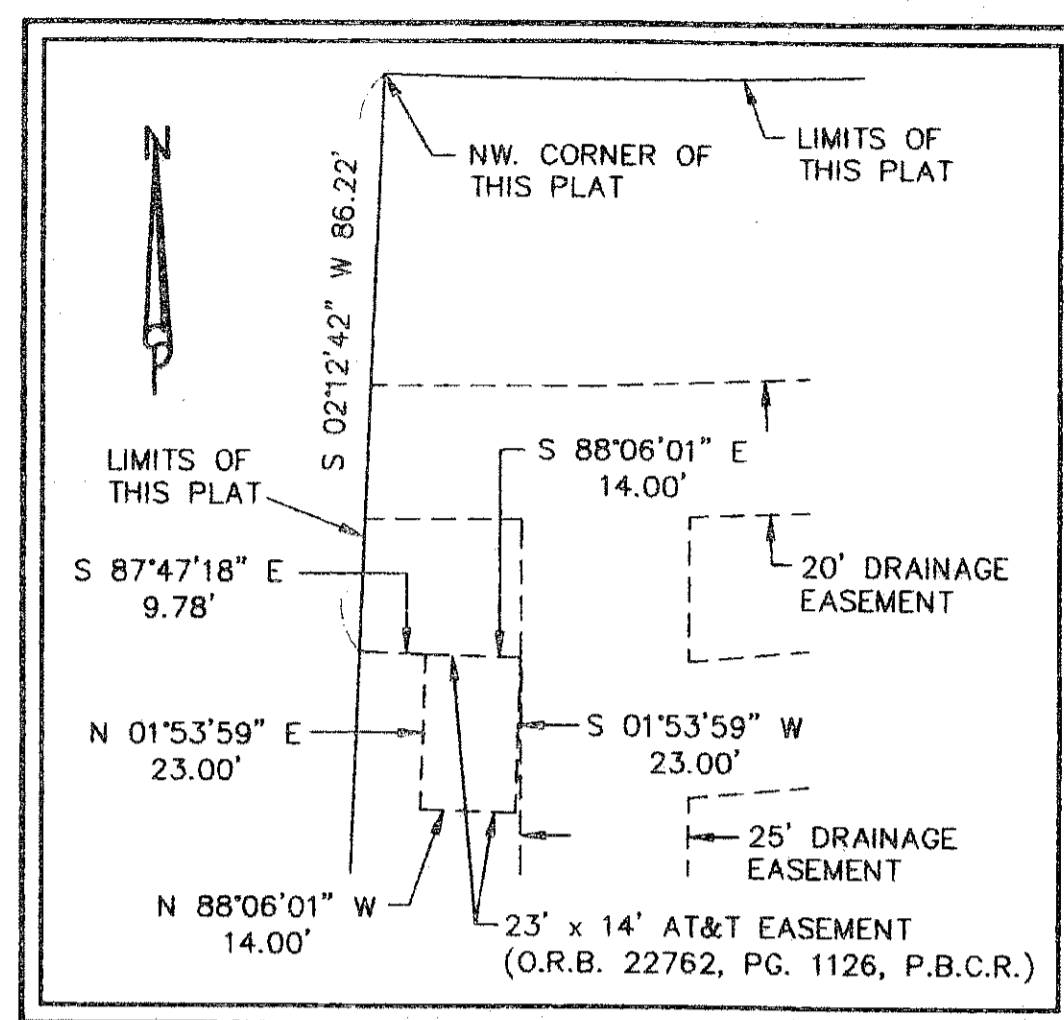
182

THIS INSTRUMENT WAS FILED FOR RECORD AT _____ M.
THIS _____
DAY OF _____, 20____
AND DULY RECORDED IN:
PLAT BOOK _____
ON PAGE _____
SHARON BOCK
CLERK CIRCUIT COURT
BY: _____
DEPUTY CLERK

SHEET 7 OF 11



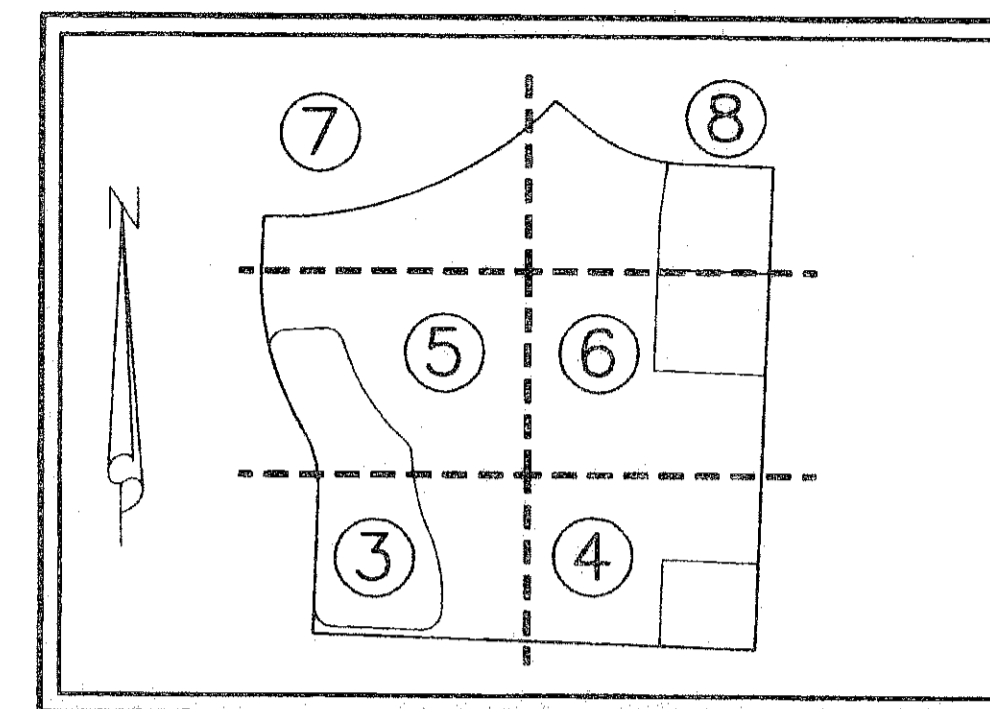
DRAINAGE EASEMENT DETAIL
NOT TO SCALE



A.T.&T. EASEMENT DETAIL
NOT TO SCALE

LEGEND

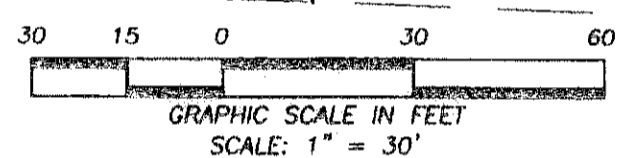
- C = CENTERLINE
- DE = DRAINAGE EASEMENT
- F.P.L. = FLORIDA POWER & LIGHT
- LAE = LIMITED ACCESS EASEMENT
- L.M.E. = LAKE MAINTENANCE EASEMENT
- LMAE = LAKE MAINTENANCE ACCESS EASEMENT
- L.S.E. = LANDSCAPE EASEMENT
- LB# = LICENSED BUSINESS NUMBER
- O.R.B. = OFFICIAL RECORD BOOK
- (P) = PER THE PLAT OF WELLINGTON GREEN, MUPD/PUD, (PLAT BOOK 87, PAGE 81, P.B.C.R.)
- P.B.C.R. = PALM BEACH COUNTY RECORDS
- P.R.M. = PERMANENT REFERENCE MONUMENT
- P.B. = PLAT BOOK
- PG. = PAGE(S)
- P.R.M. = PERMANENT REFERENCE MONUMENT
- R/W = RIGHT OF WAY
- SSDE = SAFE SIGHT DISTANCE EASEMENT
- sq. ft. = SQUARE FEET
- (T) = TOTAL
- U.E. = UTILITY EASEMENT
- WE = WATER EASEMENT
- WSE = WATER & SEWER EASEMENT
- ⊕ = 4"x4" PERMANENT REFERENCE MONUMENT
- ⊙ = SET 5/8" IRON ROD & CAP LB No. 6599



KEY MAP
NOT TO SCALE

LINE TABLE		
LINE	DIRECTION	LENGTH
③	N 35°57'24" W	70.34'
④	N 54°02'36" E	12.00'
⑤	N 35°57'24" W	67.69'
⑬	S 37°16'05" E	60.00'
⑭	S 37°16'05" E	60.00'
⑮	S 39°27'01" E	42.69'

CURVE TABLE			
CURVE	RADIUS	CENTRAL ANGLE	ARC LENGTH
C2	1000.00'	Δ=1°51'02"	L=32.30'



N. LINE OF THE S. 1/2 OF SECTION 13-44S.-41E.

WELLINGTON GREEN,
A MUPD/PUD
(P.B. 87, PG. 81)
TRACT G (P)

WELLINGTON GREEN,
A MUPD/PUD
(P.B. 87, PG. 81)
TRACT G (P)

WELLINGTON GREEN,
A MUPD/PUD
(P.B. 87, PG. 81)
PARCEL 1

23' x 14' AT&T EASEMENT
(O.R.B. 22762, PG. 1126, P.B.C.R.)
SEE DETAIL THIS SHEET

TRACT H
1,132,630 sq.ft.
26.002 acres

TRACT H
1,132,630 sq.ft.
26.002 acres

MATCHLINE SHEET 5 OF 11

MATCHLINE SHEET 8 OF 11

SEE SHEET 9 OF 11 FOR DETAIL OF FLORIDA POWER & LIGHT COMPANY EASEMENT (O.R.B. 22762, PG. 1100, P.B.C.R.)

SEE SHEET 10 OF 11 FOR DETAIL OF FLORIDA PUBLIC UTILITIES COMPANY EASEMENT (O.R.B. 22762, PG. 1116, P.B.C.R.)

SEE SHEET 11 OF 11 FOR DETAIL OF WATER AND SEWER EASEMENT PER THIS PLAT

THIS INSTRUMENT WAS PREPARED BY:
DAVID A. BOWER, P.S.M. #5888 IN THE OFFICES OF DENNIS J. LEAVY AND ASSOCIATES, INC., LB #6599
460 BUSINESS PARK WAY, SUITE D
ROYAL PALM BEACH, FLORIDA 33411
(561) 753-0650

DENNIS J. LEAVY & ASSOCIATES, INC.
LAND SURVEYORS AND MAPPERS

460 BUSINESS PARK WAY • SUITE D • ROYAL PALM BEACH, FL • 33411
PHONE: (561) 753-0650 FAX: (561) 753-0290

SCALE: 1"=30' CHECKED BY: D.B. DATE: 2/20/2007
DRAWN BY: E.B. JOB NO.: 06-023