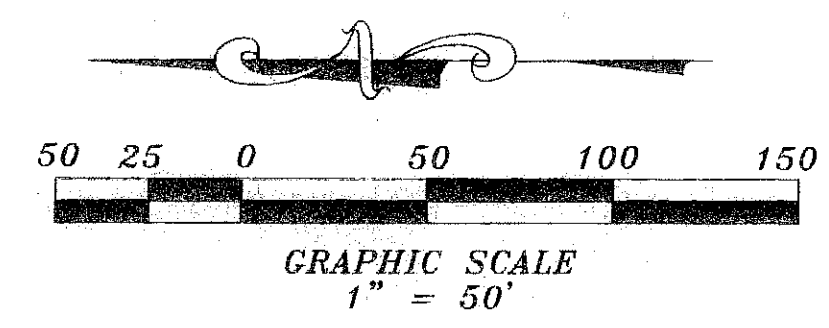


Palm Beach Park of Commerce, P.I.P.D. - Plat 13

Being a replat of Lots 2G, 3G, 5L, and 6L, Palm Beach Park of Commerce, a P.I.P.D., Plat No. 1,
Plat Book 56, Page 172-176, lying within Section 18, Township 41 South, Range 41 East,
Palm Beach County, Florida

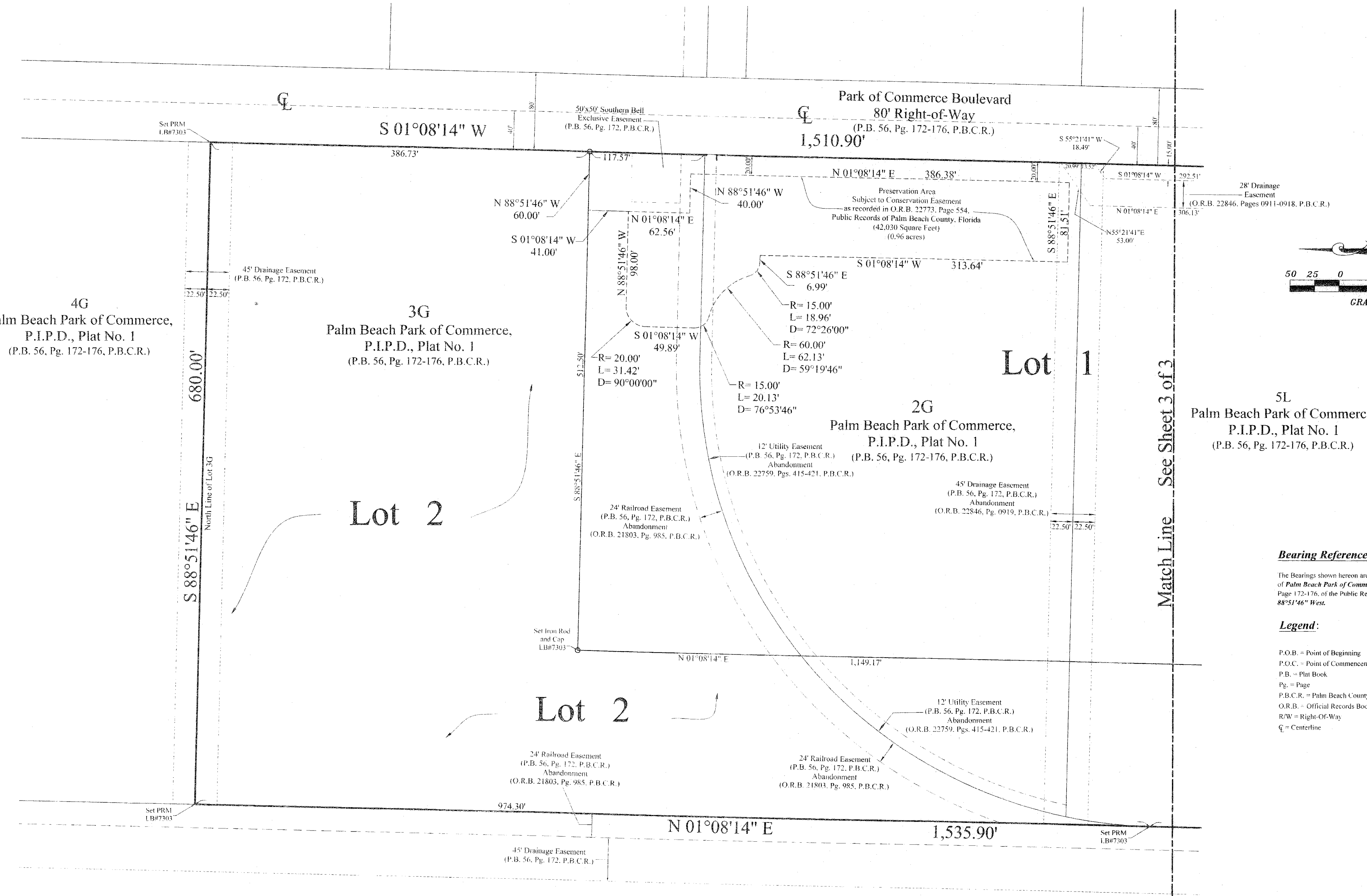
196
State of Florida
County of Palm Beach
This plat was filed for
record at _____ M.
This _____ day of _____
A.D. 2008 and duly recorded
in Plat Book _____ on
Pages _____ and _____
Sharon R. Bock
Clerk & Comptroller
Palm Beach County
By: _____
Deputy Clerk

Sheet 2 of 3




Bearing Reference:
The Bearings shown hereon are referenced to the South Line of Lot 6L, as shown on the plat of Palm Beach Park of Commerce, A.P.I.P.D., Plat No. 1, as recorded in Plat Book 56, Page 172-176, of the Public Records of Palm Beach County, Florida. Said Line bears North 88°51'46" West.

Legend:
P.O.B. = Point of Beginning
P.O.C. = Point of Commencement
P.B. = Plat Book
Pg. = Page
P.B.C.R. = Palm Beach County Records
O.R.B. = Official Records Book
R/W = Right-Of-Way
CL = Centerline



Parcel 4
Palm Beach Park of Commerce, P.I.P.D., Plat No. 1
(P.B. 56, Pg. 172-176, P.B.C.R.)

 **Patriot Surveying and Mapping, Inc.**
3748 NW 124th Avenue
Coral Springs, Florida 33065
Phone: (954) 509-0083 Fax: (866) 495-0203
LB # 7303