

# SAINT ANDREW'S SCHOOL PLAT NO. 3

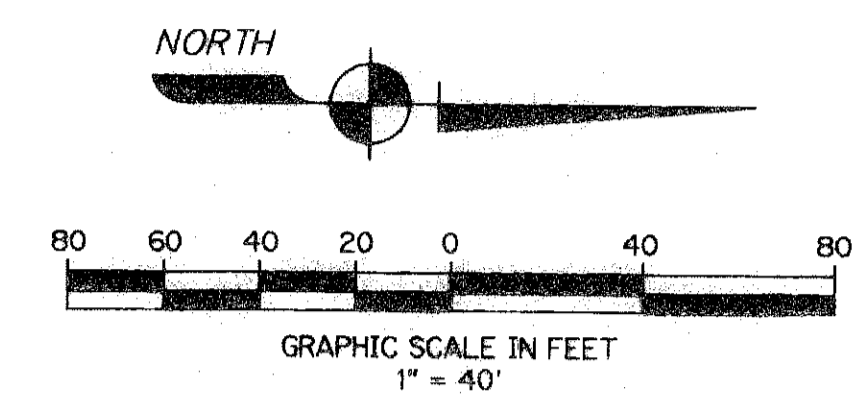
A PORTION OF THE SOUTH HALF OF THE SOUTHWEST ONE-QUARTER (S.W. 1/4) OF SECTION 10, TOWNSHIP 47 SOUTH, RANGE 42 EAST - CITY OF BOCA RATON, PALM BEACH COUNTY, FLORIDA.

2

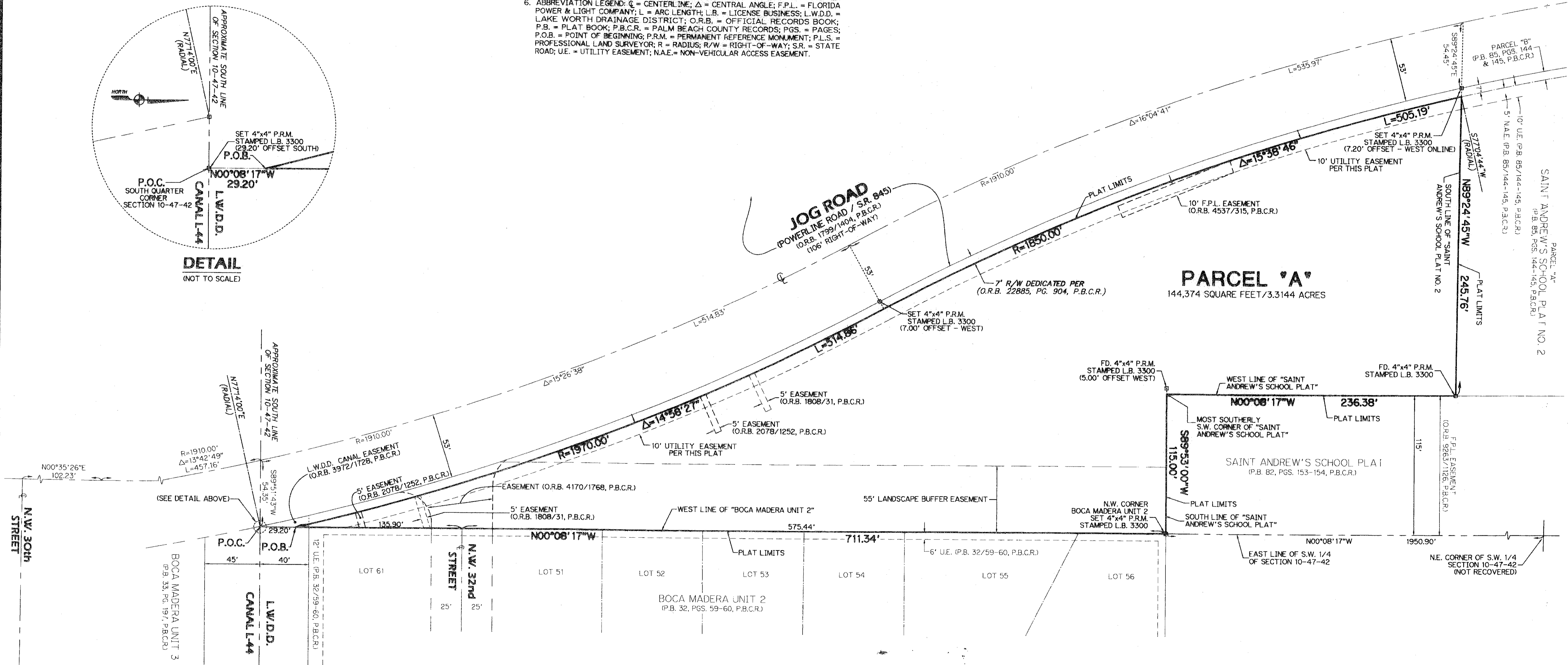
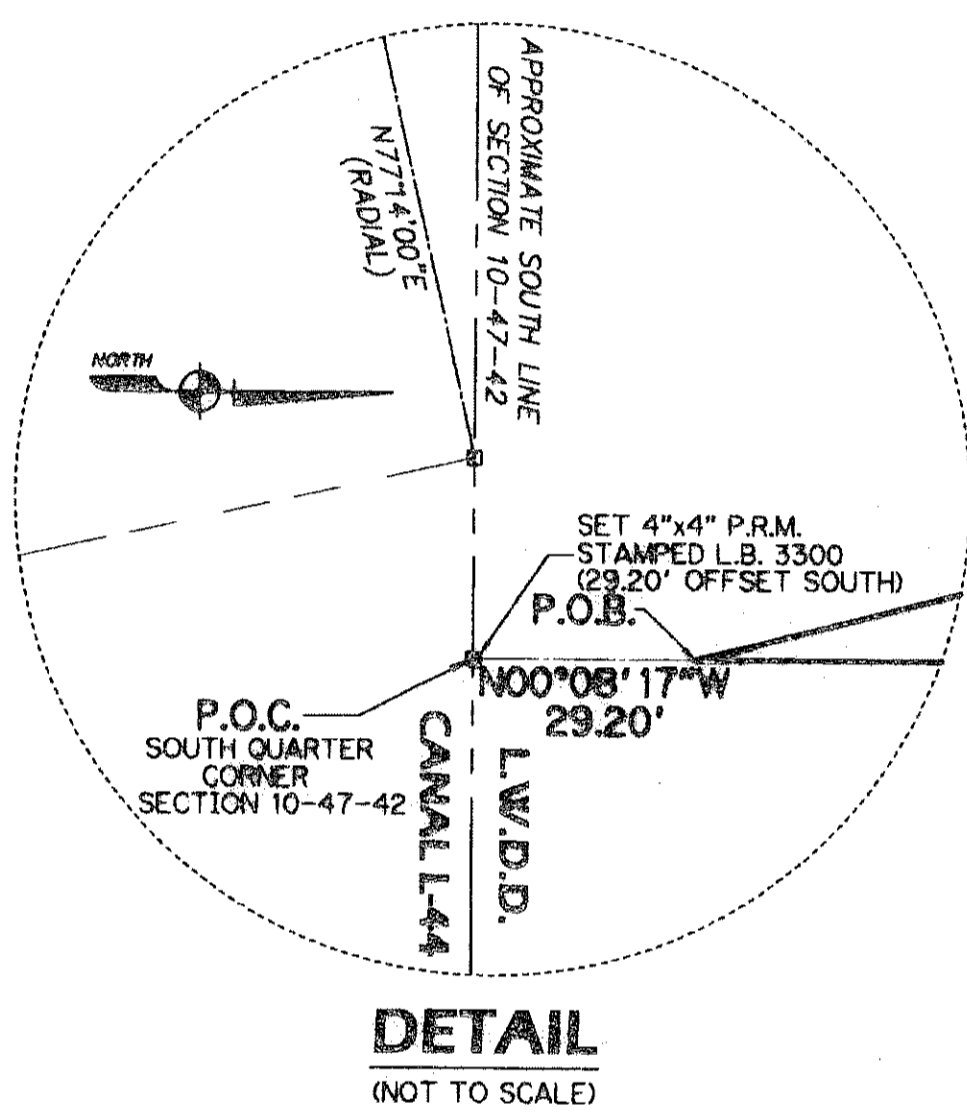
STATE OF FLORIDA  
 COUNTY OF PALM BEACH  
 This plat was filed for record at  
 this \_\_\_\_\_ day of \_\_\_\_\_, 2008,  
 and duly recorded in Plat Book \_\_\_\_\_, Pages \_\_\_\_\_, through \_\_\_\_\_  
 SHARON R. BOCK  
 Clerk & Comptroller  
 By: \_\_\_\_\_

THIS INSTRUMENT WAS PREPARED BY:  
 JOHN T. DOOGAN, P.L.S.  
**AVIROM & ASSOCIATES, INC.**  
 SURVEYING & MAPPING  
 50 S.W. 2nd AVENUE, SUITE 102  
 BOCA RATON, FLORIDA 33432  
 (561) 392-2594  
 OCTOBER, 2008

- NOTES:**
- THERE SHALL BE NO BUILDINGS OR ANY KIND OF CONSTRUCTION, PLACED ON UTILITY OR DRAINAGE EASEMENTS, EXCEPT DRIVEWAYS AND/OR SIDEWALKS.
  - THERE SHALL BE NO TREES OR SHRUBS, PLACED ON UTILITY EASEMENTS. LANDSCAPING ON OTHER UTILITY EASEMENTS SHALL BE ALLOWED ONLY AFTER CONSENT OF ALL UTILITY COMPANIES HAVING THE RIGHT TO OCCUPY THE SAME.
  - BEARINGS SHOWN HEREON ARE RELATIVE TO "SAINT ANDREW'S SCHOOL PLAT NO. 2" AS RECORDED IN PLAT BOOK 85, PAGES 144 AND 145 OF THE PUBLIC RECORDS OF PALM BEACH COUNTY WITH THE SOUTH LINE OF SAID PLAT HAVING A BEARING OF S89°24'45"E.
  - DIMENSIONS SHOWN HEREON ARE IN FEET AND DECIMAL PARTS THEREOF AND ARE BASED ON THE DEFINITION OF FOOT AS ADOPTED BY THE UNITED STATES BUREAU OF STANDARDS AND REFER TO THE HORIZONTAL PLANE.
  - "B" INDICATES 4"x4" PERMANENT REFERENCE MONUMENT (P.R.M.) FOUND OR SET AS NOTED.
  - ABBREVIATION LEGEND: C = CENTERLINE; Δ = CENTRAL ANGLE; F.P.L. = FLORIDA POWER & LIGHT COMPANY; L = ARC LENGTH; L.B. = LICENSE BUSINESS; L.W.D.D. = LAKE WORTH DRAINAGE DISTRICT; O.R.B. = OFFICIAL RECORDS BOOK; P.B. = PLAT BOOK; P.B.C.R. = PALM BEACH COUNTY RECORDS; PGS. = PAGES; P.O.B. = POINT OF BEGINNING; P.R.M. = PERMANENT REFERENCE MONUMENT; P.L.S. = PROFESSIONAL LAND SURVEYOR; R = RADIUS; R/W = RIGHT-OF-WAY; S.R. = STATE ROAD; U.E. = UTILITY EASEMENT; N.A.E. = NON-VEHICULAR ACCESS EASEMENT.



SHEET 2 OF 2



**NOTICE:**  
 THIS PLAT, AS RECORDED IN ITS GRAPHIC FORM, IS THE OFFICIAL DEPICTION OF THE SUBDIVIDED LANDS DESCRIBED HEREIN AND WILL, IN NO CIRCUMSTANCES BE SUPPLANTED IN AUTHORITY BY ANY OTHER GRAPHIC OR DIGITAL FORM OF THE PLAT. THERE MAY BE ADDITIONAL RESTRICTIONS THAT ARE NOT RECORDED ON THIS PLAT THAT MAY BE FOUND IN THE PUBLIC RECORDS OF PALM BEACH COUNTY.