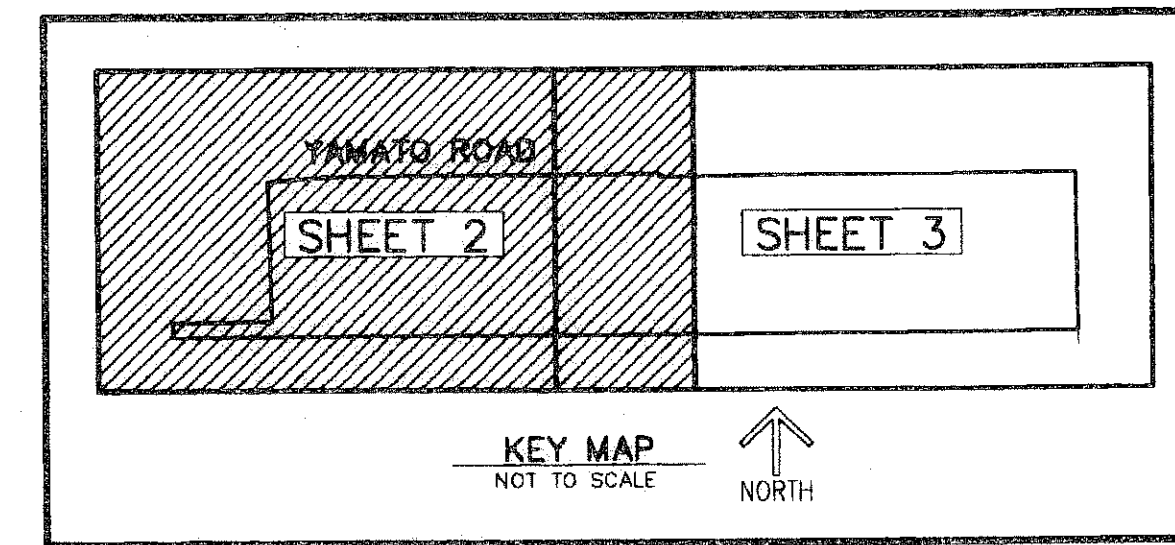


# ST. JOHN THE EVANGELIST CATHOLIC CHURCH PLAT 2

BEING A REPLAT OF PARCEL B, ST. JOHN THE EVANGELIST CATHOLIC CHURCH, AS RECORDED IN PLAT BOOK 87, PAGES 172 AND 173, TOGETHER WITH A PORTION OF TRACT 56, FLORIDA FRUIT LANDS CO. SUBDIVISION NO. 2, AS RECORDED IN PLAT BOOK 1, PAGE 102, TOGETHER WITH THE 15 FOOT WIDE RIGHT-OF-WAY LYING ADJACENT TO SAID TRACT 56 HAVING BEEN ABANDONED BY OFFICIAL RECORD BOOK 11471, PAGE 1551, TOGETHER WITH A PORTION OF THE NORTH 40.00 FEET OF SECTION 12, TOWNSHIP 47 SOUTH, RANGE 41 EAST, HAVING BEEN QUIT CLAIMED BY THE LAKE WORTH DRAINAGE DISTRICT IN OFFICIAL RECORD BOOK 9469, PAGE 286, ALL OF THE PUBLIC RECORDS OF PALM BEACH COUNTY, FLORIDA, LYING IN SECTIONS 1 AND 12, TOWNSHIP 47 SOUTH, RANGE 41 EAST, PALM BEACH COUNTY, FLORIDA.

THIS INSTRUMENT PREPARED BY  
 DAVID P. LINDLEY  
 OF  
**CAULFIELD and WHEELER, INC.**  
 SURVEYORS - ENGINEERS - PLANNERS  
 7301-A WEST PALMETTO PARK ROAD, SUITE 100A  
 BOCA RATON, FLORIDA 33433 - (561)392-1991  
 FEBRUARY - 2008



STATE OF FLORIDA  
 COUNTY OF PALM BEACH  
 THIS PLAT WAS FILED FOR  
 RECORD AT \_\_\_\_\_ M.  
 THIS \_\_\_\_\_ DAY OF \_\_\_\_\_  
 A.D. 2008 AND DULY RECORDED  
 IN PLAT BOOK \_\_\_\_\_ ON  
 PAGES \_\_\_\_\_ AND \_\_\_\_\_  
 SHARON R. BOCK  
 CLERK AND COMPTROLLER  
 BY: \_\_\_\_\_  
 DEPUTY CLERK

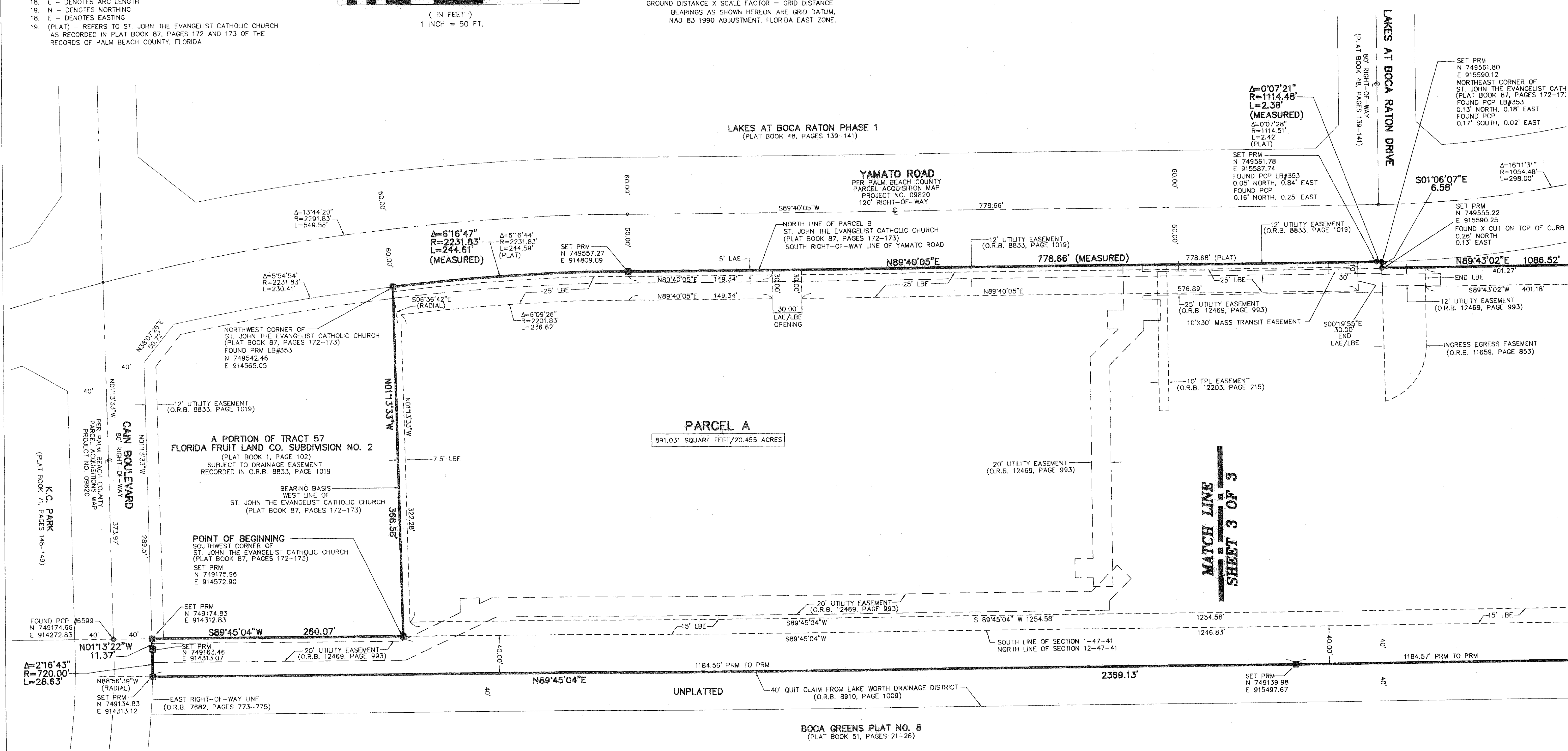
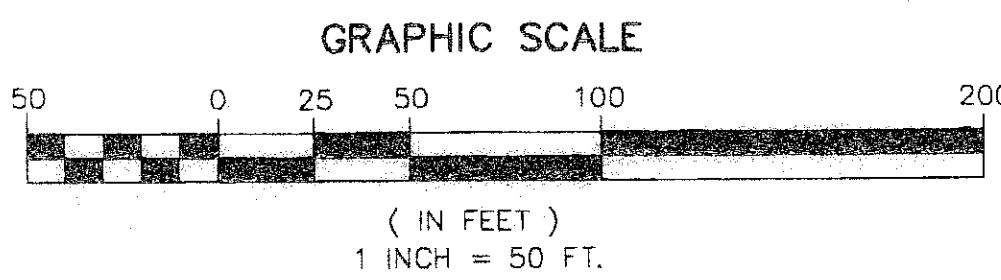
**SHEET 2 OF 3**

### SURVEY NOTES:

- IN THOSE CASES WHERE EASEMENTS OF DIFFERENT TYPES CROSS OR OTHERWISE COINCIDE, DRAINAGE EASEMENTS SHALL HAVE FIRST PRIORITY, UTILITY EASEMENTS SHALL HAVE SECOND PRIORITY, ACCESS EASEMENTS SHALL HAVE THIRD PRIORITY, AND ALL OTHER EASEMENTS SHALL BE SUBORDINATE TO THESE WITH THEIR PRIORITIES BEING DETERMINED BY USE RIGHTS GRANTED.
- BUILDING SETBACK LINES SHALL BE AS REQUIRED BY CURRENT PALM BEACH COUNTY ZONING REGULATIONS.
- NO BUILDINGS OR ANY KIND OF CONSTRUCTION OR TREES OR SHRUBS SHALL BE PLACED ON AN EASEMENT WITHOUT PRIOR WRITTEN CONSENT OF ALL EASEMENT BENEFICIARIES AND ALL APPLICABLE COUNTY APPROVALS OR PERMITS AS REQUIRED FOR SUCH ENCROACHMENTS.
- APPROVAL OF LANDSCAPING ON UTILITY EASEMENT, (EXCLUDING WATER AND SEWER) SHALL ONLY BE WITH APPROVAL OF ALL UTILITIES OCCUPYING SAID EASEMENT.
- BEARINGS RELATIVE TO A BEARING OF N.01°13'33"W. ALONG THE WEST LINE OF PARCEL B, ST. JOHN THE EVANGELIST CATHOLIC CHURCH, AS RECORDED IN PLAT BOOK 87, PAGES 172 AND 173.
- PRM - INDICATES SET 4" X 4" X 24" PERMANENT REFERENCE MONUMENT MARKED LB 3591.
- PRM - INDICATES SET NAIL AND DISK MARKED PRM LB 3591
- PCP - INDICATES PERMANENT CONTROL POINT
- UE - INDICATES UTILITY EASEMENT
- N.T.S. - DENOTES NOT TO SCALE
- LBE - DENOTES LANDSCAPE BUFFER EASEMENT
- TLBE - DENOTES TEMPORARY LANDSCAPE BUFFER EASEMENT
- CL - DENOTES CENTERLINE
- LAE - DENOTES LIMITED ACCESS EASEMENT
- O.R.B. - DENOTES OFFICIAL RECORDS BOOK
- A - DENOTES CENTRAL ANGLE
- R - DENOTES RADIUS
- L - DENOTES ARC LENGTH
- N - DENOTES NORTHING
- E - DENOTES EASTING
- (PLAT) - REFERS TO ST. JOHN THE EVANGELIST CATHOLIC CHURCH AS RECORDED IN PLAT BOOK 87, PAGES 172 AND 173 OF THE RECORDS OF PALM BEACH COUNTY, FLORIDA

### NOTES COORDINATES, BEARINGS AND DISTANCES

COORDINATES SHOWN ARE GRID  
 DATUM = NAD 83 1990 ADJUSTMENT  
 ZONE = FLORIDA EAST  
 LINEAR UNIT = US SURVEY FEET  
 COORDINATE SYSTEM 1983 STATE PLANE  
 TRANSVERSE MERCATOR PROJECTION  
 ALL DISTANCES ARE GROUND  
 SCALE FACTOR = 1.0000183  
 GROUND DISTANCE X SCALE FACTOR = GRID DISTANCE  
 BEARINGS AS SHOWN HEREON ARE GRID DATUM,  
 NAD 83 1990 ADJUSTMENT, FLORIDA EAST ZONE.



MATCH LINE  
SHEET 3 OF 3

BOCA GREENS PLAT NO. 8  
(PLAT BOOK 51, PAGES 21-26)