

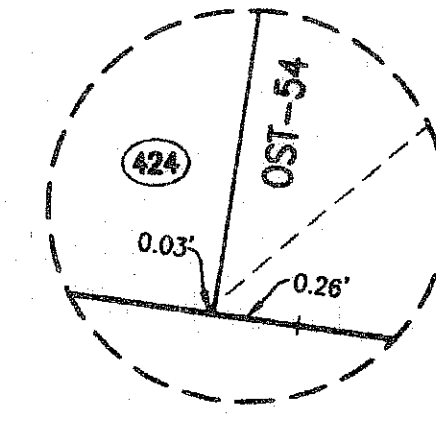
MALLORY CREEK AT ABACOA - PLAT TWO

BEING A REPLAT OF DEV-1 TRACT AND DEV-2 TRACT ACCORDING TO MALLORY CREEK AT ABACOA - PLAT ONE AS RECORDED IN PLAT BOOK 109, PAGES 97 THROUGH 113, OF THE PUBLIC RECORDS OF PALM BEACH COUNTY, FLORIDA, LYING IN SECTION 14, TOWNSHIP 41 SOUTH, RANGE 42 EAST, TOWN OF JUPITER, PALM BEACH COUNTY, FLORIDA

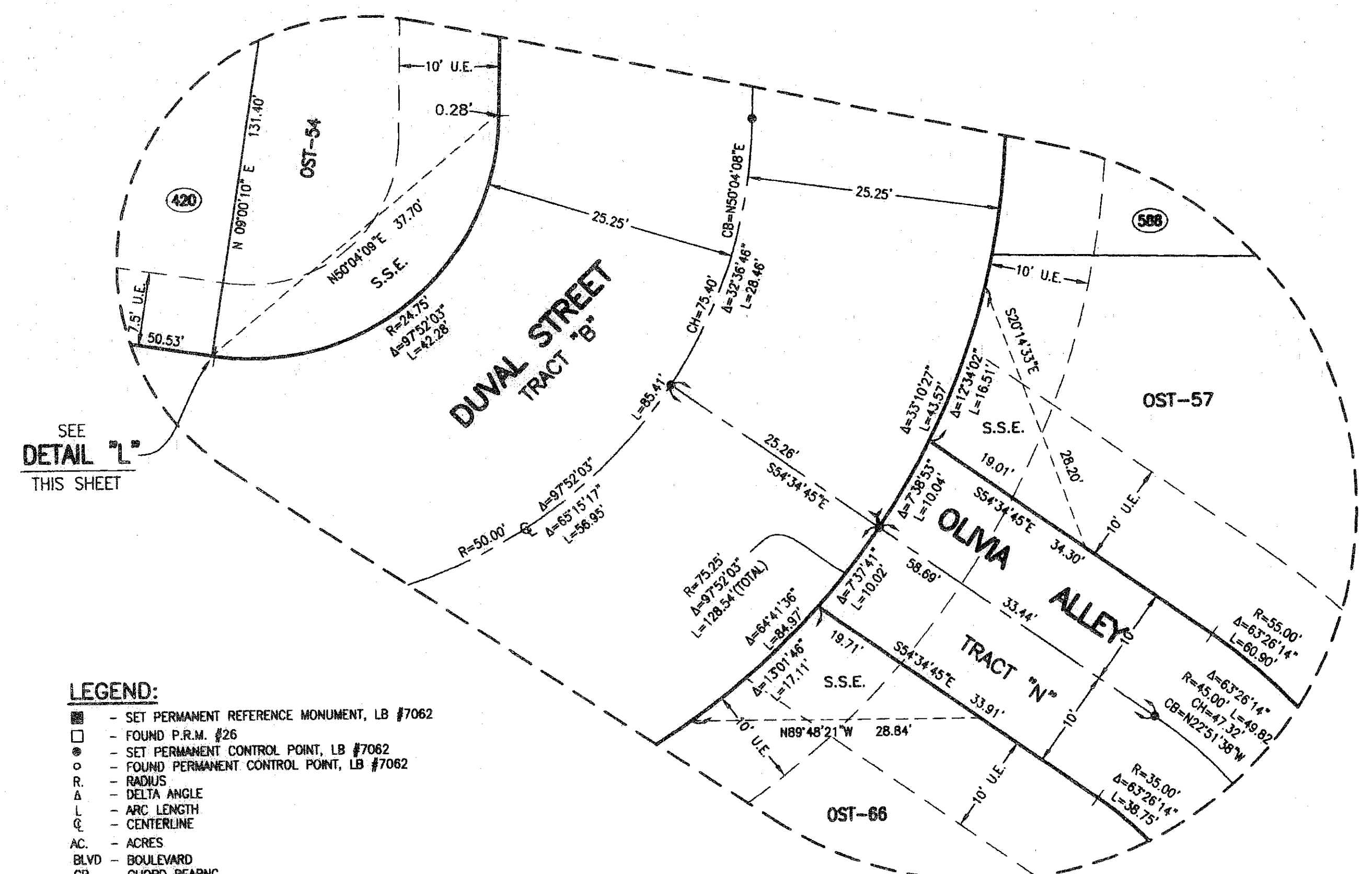
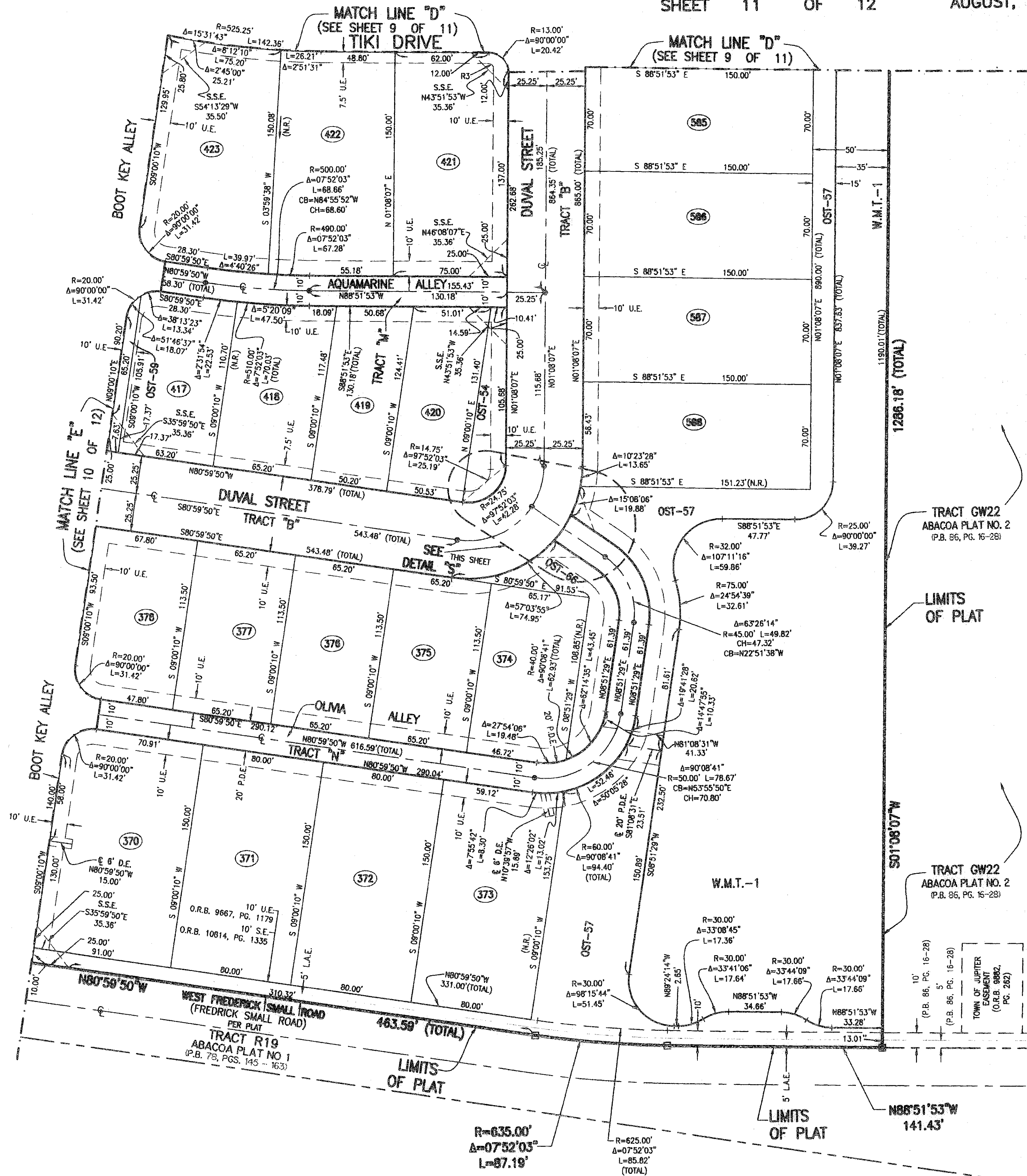
SHEET 11 OF 12 AUGUST, 2008



SCALE: 1" = 40'



DETAIL "L" NOT TO SCALE



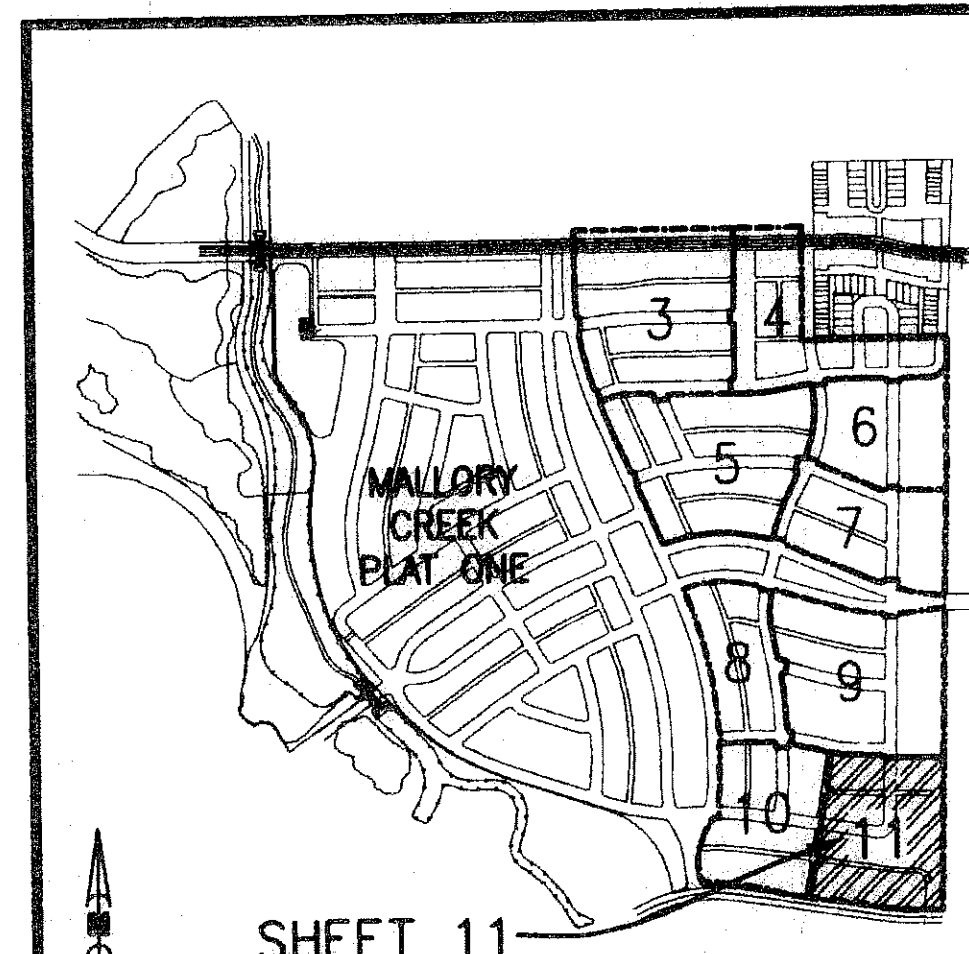
DETAIL "S" SCALE: 1" = 10'

- LEGEND:**
- SET PERMANENT REFERENCE MONUMENT, LB #7062
 - FOUND P.R.M. #26
 - SET PERMANENT CONTROL POINT, LB #7062
 - FOUND PERMANENT CONTROL POINT, LB #7062
 - R RADIUS
 - Δ DELTA ANGLE
 - L ARC LENGTH
 - C CENTERLINE
 - AC ACRES
 - BLVD BOULEVARD
 - CB CHORD BEARING
 - CH CHORD DISTANCE
 - D.B. DEED BOOK
 - D.E. DRAINAGE EASEMENT
 - I.E.E. INGRESS AND EGRESS EASEMENT
 - L.A.E. LIMITED ACCESS EASEMENT
 - L.D.E. LANDSCAPE EASEMENT
 - LB LICENSED BUSINESS
 - (N.R.) NON-RADIAL
 - N.T.S. NOT TO SCALE
 - O.R.B. OFFICIAL RECORD BOOK
 - OST OPEN SPACE TRACT
 - P.B. PLAT BOOK
 - P.D.E. PRIVATE DRAINAGE EASEMENT
 - PGS. PAGES
 - P.I. POINT OF INTERSECTION
 - P.L.S. PROFESSIONAL LAND SURVEYOR
 - P.O.B. POINT OF BEGINNING
 - P.O.C. POINT OF COMMENCEMENT
 - P.R.C. POINT OF REVERSE CURVATURE
 - P.R.M. PERMANENT REFERENCE MONUMENT
 - P.U.E. PRIVATE UTILITY EASEMENT
 - R3 3.00' UTILITY EASEMENT RADIUS
 - (RAD) RADIAL
 - (R.F.) RADIAL TO FRONT LOT LINE
 - (R.R.) RADIAL TO REAR LOT LINE
 - R/W RIGHT-OF-WAY
 - S.E. SIDEWALK EASEMENT
 - S.S.E. SAFE SIGHT EASEMENT
 - T.S.E. TEMPORARY SIDEWALK EASEMENT
 - U.E. UTILITY EASEMENT
 - F.M.E. FORCE MAIN EASEMENT
 - TO NON-RADIAL CURVE

TRACT GW22 ABACOA PLAT NO. 2 (P.B. 85, PG. 16-28)

TRACT GW22 ABACOA PLAT NO. 2 (P.B. 85, PG. 16-28)

TOWN OF JUPITER EASEMENT (O.R.B. 9882, PG. 282)



SHEET 11 KEY MAP

THIS INSTRUMENT PREPARED BY PERRY C. WHITE, P.S.M. 4213, STATE OF FLORIDA ENGINEERS PLANNERS SURVEYORS 2081 VISTA PARKWAY WEST PALM BEACH, FLORIDA 33411 LB7062